

2006 School Realities

Published October 2006
Enquiries: (012) 312-5958

EMIS

<http://www.education.gov.za>

In 2006, there were 12 302 236 learners in ordinary public and independent schools in South Africa, who attended 26 292 schools and were served by 386 595 educators (see Table 3). These data are from the survey conducted on the 10th school day. Approximately 94% of functional ordinary public and independent schools submitted the survey forms.

Table 2 reflects the indicative pre- and post-demarcation shifts (old and new provincial boundaries) of learners, educators and schools in all nine provinces as on 11 August 2006. Four provinces (Gauteng, KwaZulu-Natal, Mpumalanga and Northern Cape) showed a net increase, three (Eastern Cape, Limpopo and North West) showed a net decrease, and two (Free State and Western Cape) were not affected. The report will focus only on the pre-demarcation status of ordinary public and independent schools.

Table 3 shows a national average LER of 31.8 (in four provinces the ratio was higher than the national average), and an LER for independent schools (17.5) that was almost half the LER for public schools (32.6). The national average LSR was 468, with four provinces higher than the national average.

Table 3 further indicates that the percentage of educators at independent schools (5.0%) was much higher than the percentage of learners (2.8%), and considerably higher than the percentage of schools (4.2%) in the same category. Most provinces reflected the same pattern.

Table 1: List of abbreviations

ABET	Adult Basic Education and Training	GPI	Gender Parity Index
ECD	Early Childhood Development	LER	Learner-to-Educator Ratio
FET	Further Education and Training	LSR	Learner-to-School Ratio
GER	Gross Enrolment Ratio	SGB	School Governing Body
GET	General Education and Training	SNE	Special Needs Education

Table 2: Number of learners, educators and schools in ordinary public and independent schools, by province and indicative pre- and post-demarcation shifts (old and new provincial boundaries), in 2006

Province	Learners		Educators		Schools	
	Pre	Post	Pre	Post	Pre	Post
Eastern Cape	2 165 994	2 101 768	64 926	63 157	6 035	5 886
Free State	686 346	686 346	23 486	23 486	1 821	1 821
Gauteng	1 770 110	1 850 072	57 620	60 233	2 246	2 369
KwaZulu-Natal	2 709 408	2 773 634	83 960	85 729	5 827	5 976
Limpopo	1 931 207	1 763 081	58 295	53 401	4 340	4 076
Mpumalanga	944 108	1 102 637	27 721	32 364	1 848	2 101
North West	905 256	784 136	31 065	26 677	2 158	1 860
Northern Cape	210 981	261 736	6 680	8 706	436	622
Western Cape	978 826	978 826	32 842	32 842	1 581	1 581
National	12 302 236	12 302 236	386 595	386 595	26 292	26 292

Table 3: Number of learners, educators and schools, and LER and LSR in ordinary public and independent schools, by province and school sector, in 2006

Province	School Sector	Learners			Educators			Schools			LER	LSR
		Number	As % of Provincial Total	As % of National Total	Number	As % of Provincial Total	As % of National Total	Number	As % of Provincial Total	As % of National Total		
Eastern Cape	Independent	29 805	1.4	8.8	758	1.2	3.9	106	1.8	9.7	39.3	281
	Public	2 136 189	98.6	17.9	64 168	98.8	17.5	5 929	98.2	23.5	33.3	360
	Total	2 165 994		17.6	64 926		16.8	6 035		23.0	33.4	359
Free State	Independent	16 263	2.4	4.8	765	3.3	3.9	69	3.8	6.3	21.3	236
	Public	670 083	97.6	5.6	22 721	96.7	6.2	1 752	96.2	7.0	29.5	382
	Total	686 346		5.6	23 486		6.1	1 821		6.9	29.2	377
Gauteng	Independent	152 986	8.6	45.0	9 630	16.7	49.6	366	16.3	33.3	15.9	418
	Public	1 617 124	91.4	13.5	47 990	83.3	13.1	1 880	83.7	7.5	33.7	860
	Total	1 770 110		14.4	57 620		14.9	2 246		8.5	30.7	788
KwaZulu-Natal	Independent	47 206	1.7	13.9	2 789	3.3	14.4	176	3.0	16.0	16.9	268
	Public	2 662 202	98.3	22.3	81 171	96.7	22.1	5 651	97.0	22.4	32.8	471
	Total	2 709 408		22.0	83 960		21.7	5 827		22.2	32.3	465
Limpopo	Independent	28 928	1.5	8.5	1 333	2.3	6.9	97	2.2	8.8	21.7	298
	Public	1 902 279	98.5	15.9	56 962	97.7	15.5	4 243	97.8	16.8	33.4	448
	Total	1 931 207		15.7	58 295		15.1	4 340		16.5	33.1	445
Mpumalanga	Independent	21 285	2.3	6.3	975	3.5	5.0	99	5.4	9.0	21.8	215
	Public	922 823	97.7	7.7	26 746	96.5	7.3	1 749	94.6	6.9	34.5	528
	Total	944 108		7.7	27 721		7.2	1 848		7.0	34.1	511
North West	Independent	11 007	1.2	3.2	677	2.2	3.5	43	2.0	3.9	16.3	256
	Public	894 249	98.8	7.5	30 388	97.8	8.3	2 115	98.0	8.4	29.4	423
	Total	905 256		7.4	31 065		8.0	2 158		8.2	29.1	419
Northern Cape	Independent	2 846	1.3	0.8	137	2.1	0.7	15	3.4	1.4	20.8	190
	Public	208 135	98.7	1.7	6 543	97.9	1.8	421	96.6	1.7	31.8	494
	Total	210 981		1.7	6 680		1.7	436		1.7	31.6	484
Western Cape	Independent	29 734	3.0	8.7	2 343	7.1	12.1	127	8.0	11.6	12.7	234
	Public	949 092	97.0	7.9	30 499	92.9	8.3	1 454	92.0	5.8	31.1	653
	Total	978 826		8.0	32 842		8.5	1 581		6.0	29.8	619
National	Independent	340 060	2.8		19 407	5.0		1 098	4.2		17.5	310
	Public	11 962 176	97.2		367 188	95.0		25 194	95.8		32.6	475
	Total	12 302 236			386 595			26 292			31.8	468



education

Department:
Education
REPUBLIC OF SOUTH AFRICA

E M I S

Province	School Sector	Gender	FET Band				Other			Total Primary (Gr. 1-7)	Total Secondary (Gr. 8-12)	Total (Gr. 1-12)	Grand Total
			Gr. 10	Gr. 11	Gr. 12	Total	SNE	Post-Matric	Total				
Eastern Cape	Independent	Female	1 350	1 375	1 793	4 518	5	111	116	7 485	6 600	14 085	15 415
		Total	2 582	2 521	3 024	8 127	24	206	230	14 884	12 199	27 083	29 805
	Public	Female	84 004	67 418	41 859	193 281	717	227	944	674 587	353 288	1 027 875	1 079 603
		Total	153 614	118 801	74 309	346 724	1 920	426	2 346	1 382 172	651 416	2 033 588	2 136 189
	Both	Female	85 354	68 793	43 652	197 799	722	338	1 060	682 072	359 888	1 041 960	1 095 018
		Male	70 842	52 529	33 681	157 052	1 222	294	1 516	714 984	303 727	1 018 711	1 070 976
Total		156 196	121 322	77 333	354 851	1 944	632	2 576	1 397 056	663 615	2 060 671	2 165 994	
Free State	Independent	Female	567	569	462	1 598	0	0	0	4 120	3 405	7 525	7 964
		Total	1 159	1 196	846	3 201	0	0	0	8 421	6 985	15 406	16 263
	Public	Female	34 425	25 914	16 172	76 511	2 354	0	2 354	186 078	134 344	320 422	333 108
		Total	67 520	48 623	30 433	146 576	5 747	0	5 747	380 314	263 279	643 593	670 083
	Both	Female	34 992	26 483	16 634	78 109	2 354	0	2 354	190 198	137 749	327 947	341 072
		Male	33 687	23 336	14 645	71 668	3 393	0	3 393	198 537	132 515	331 052	345 274
Total		68 679	49 819	31 279	149 777	5 747	0	5 747	388 735	270 264	658 999	686 346	
Gauteng	Independent	Female	7 120	6 907	6 629	20 656	130	20	150	38 445	34 868	73 313	78 892
		Total	14 001	13 088	12 083	39 172	234	51	285	75 369	66 857	142 226	152 986
	Public	Female	77 610	64 235	38 172	180 017	756	103	859	467 834	317 009	784 843	807 434
		Total	154 194	120 310	70 175	344 679	2 177	287	2 464	949 251	621 349	1 570 600	1 617 124
	Both	Female	84 730	71 142	44 801	200 673	886	123	1 009	506 279	351 877	858 156	886 326
		Male	83 465	62 256	37 457	183 178	1 525	215	1 740	518 341	336 329	854 670	883 784
Total		168 195	133 398	82 258	383 851	2 411	338	2 749	1 024 620	688 206	1 712 826	1 770 110	
KwaZulu-Natal	Independent	Female	2 151	1 956	2 381	6 488	19	8	27	11 860	11 078	22 938	25 125
		Total	3 844	3 392	4 132	11 368	53	19	72	23 247	19 664	42 911	47 206
	Public	Female	112 921	111 607	68 611	293 139	1 937	144	2 081	759 628	502 497	1 262 125	1 310 819
		Total	223 440	212 272	129 709	565 421	5 608	273	5 881	1 574 469	987 549	2 562 018	2 662 202
	Both	Female	115 072	113 563	70 992	299 627	1 956	152	2 108	771 488	513 575	1 285 063	1 335 944
		Male	112 212	102 101	62 849	277 162	3 705	140	3 845	826 228	493 638	1 319 866	1 373 464
Total		227 284	215 664	133 841	576 789	5 661	292	5 953	1 597 716	1 007 213	2 604 929	2 709 408	
Limpopo	Independent	Female	1 156	1 118	1 934	4 208	1	0	1	7 416	6 284	13 700	14 828
		Total	2 049	2 132	3 425	7 606	2	0	2	14 952	11 564	26 516	28 928
	Public	Female	100 293	82 768	58 798	241 859	130	0	130	496 905	398 992	895 897	947 054
		Total	194 983	151 303	107 347	453 633	297	4	301	1 031 259	768 166	1 799 425	1 902 279
	Both	Female	101 449	83 886	60 732	246 067	131	0	131	504 321	405 276	909 597	961 882
		Male	95 583	69 549	50 040	215 172	168	4	172	541 890	374 454	916 344	969 325
Total		197 032	153 435	110 772	461 239	299	4	303	1 046 211	779 730	1 825 941	1 931 207	
Mpumalanga	Independent	Female	985	929	1 184	3 098	1	1	2	5 645	4 524	10 169	10 852
		Total	1 894	1 752	2 168	5 814	5	1	6	11 340	8 542	19 882	21 285
	Public	Female	42 968	38 440	22 271	103 679	342	269	611	266 991	177 227	444 218	458 686
		Total	83 253	72 214	40 873	196 340	819	508	1 327	550 174	343 847	894 021	922 823
	Both	Female	43 953	39 369	23 455	106 777	343	270	613	272 636	181 751	454 387	469 538
		Male	41 194	34 597	19 586	95 377	481	239	720	288 878	170 638	459 516	474 570
Total		85 147	73 966	43 041	202 154	824	509	1 333	561 514	352 389	913 903	944 108	
North West	Independent	Female	375	295	291	961	0	9	9	3 270	1 793	5 063	5 599
		Total	710	572	526	1 808	0	23	23	6 525	3 406	9 931	11 007
	Public	Female	42 605	36 327	21 425	100 357	259	0	259	258 492	176 121	434 613	442 281
		Total	83 501	69 519	39 507	192 527	659	207	866	531 280	346 933	878 213	894 249
	Both	Female	42 980	36 622	21 716	101 318	259	9	268	261 762	177 914	439 676	447 880
		Male	41 231	33 469	18 317	93 017	400	221	621	276 043	172 425	448 468	457 376
Total		84 211	70 091	40 033	194 335	659	230	889	537 805	350 339	888 144	905 256	
Northern Cape	Independent	Female	192	187	138	517	0	3	3	630	890	1 520	1 649
		Total	320	276	209	805	0	3	3	1 173	1 387	2 560	2 846
	Public	Female	9 333	6 714	3 958	20 005	91	0	91	62 227	36 764	98 991	102 963
		Total	18 570	12 885	7 614	39 069	234	2	236	127 311	72 755	200 066	208 135
	Both	Female	9 525	6 901	4 096	20 522	91	3	94	62 857	37 654	100 511	104 612
		Male	9 365	6 260	3 727	19 352	143	2	145	65 627	36 488	102 115	106 369
Total		18 890	13 161	7 823	39 874	234	5	239	128 484	74 142	202 626	210 981	
Western Cape	Independent	Female	1 057	864	977	2 898	10	17	27	8 037	4 832	12 869	14 784
		Total	2 090	1 743	1 985	5 818	26	47	73	16 381	9 669	26 050	29 734
	Public	Female	46 359	33 117	23 089	102 565	180	0	180	277 715	187 307	465 022	482 279
		Total	86 026	58 303	40 565	184 894	448	0	448	563 403	350 885	914 288	949 092
	Both	Female	47 416	33 981	24 066	105 463	190	17	207	285 752	192 139	477 891	497 063
		Male	40 700	26 065	18 484	85 249	284	30	314	294 032	168 415	462 447	481 763
Total		88 116	60 046	42 550	190 712	474	47	521	579 784	360 554	940 338	978 826	
National	Independent	Female	14 953	14 200	15 789	44 942	166	169	335	86 908	74 274	161 182	175 108
		Male	13 696	12 472	12 609	38 777	178	181	359	85 384	65 999	151 383	164 952
	Public	Total	28 649	26 672	28 398	83 719	344	350	694	172 292	140 273	312 565	340 060
		Female	550 518	466 540	294 355	1 311 413	6 766	743	7 509	3 450 457	2 283 549	5 734 006	5 964 227
	Both	Male	514 583	397 690	246 177	1 158 450	11 143	964	12 107	3 639 176	2 122 630	5 761 806	5 997 949
		Total	1 065 101	864 230	540 532	2 469 863	17 909	1 707	19 616	7 089 633	4 406 179	11 495 812	11 962 176
Both	Female	565 471	480 740	310 144	1 356 355	6 932	912	7 844	3 537 365	2 357 823	5 895 188	6 139 335	
	Male	528 279	410 162	258 786	1 197 227	11 321	1 145	12 466	3 724 560	2 188 629	5 913 189	6 162 901	
Total		1 093 750	890 902	568 930	2 553 522	18 253	2 057	20 310	7 261 925	4 546 452	11 808 377	12 302 236	

Note 1: Data exclude learners at stand-alone ECD sites, special schools, ABET centres and FET institutions.

Note 2: Owing to a shortage of space in the table, the male enrolment figures for public and independent schools are intentionally omitted in the provincial data, but are included in the national data.

Figure 1: Percentage distribution of female learners in ordinary public and independent schools, by grade, in 2006

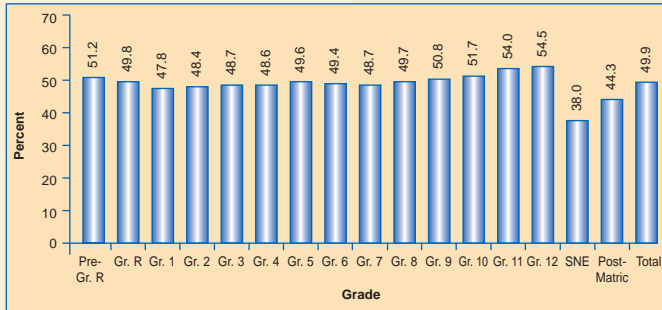


Figure 2: Percentage distribution of learners in ordinary public and independent schools, by grade, in 2006

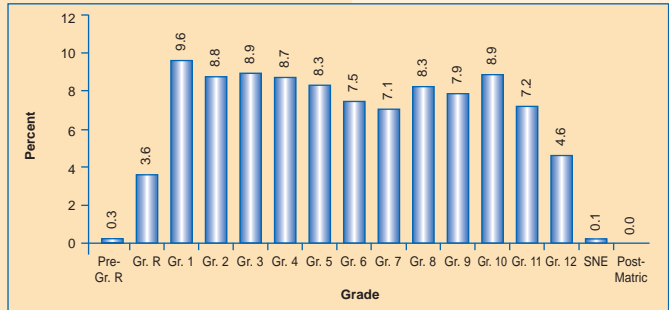


Table 5: Comparative data of learners in ordinary public and independent schools, by province, from 2000 to 2006

Province	Learners						
	2000	2001	2002	2003	2004	2005	2006
Eastern Cape	2 138 861	2 033 832	2 072 054	2 116 426	2 150 308	2 206 575	2 165 994
Free State	764 755	716 021	705 368	696 155	690 490	668 924	686 346
Gauteng	1 554 495	1 561 359	1 617 017	1 661 817	1 697 908	1 745 378	1 770 110
KwaZulu-Natal	2 663 360	2 698 453	2 729 834	2 783 051	2 718 176	2 719 996	2 709 408
Limpopo	1 845 265	1 816 189	1 839 079	1 816 852	1 893 626	1 906 482	1 931 207
Mpumalanga	911 779	903 997	914 353	914 739	934 786	914 212	944 108
North West	909 906	893 144	897 342	891 036	903 379	845 942	905 256
Northern Cape	198 650	197 101	196 731	202 010	209 000	210 152	210 981
Western Cape	916 384	918 030	945 239	956 836	978 718	980 065	978 826
National	11 903 455	11 738 126	11 917 017	12 038 922	12 176 391	12 197 726	12 302 236

Figure 1 shows that there were fewer female than male learners in Grades 1 to 8, while the opposite was true for Grades 9 to 12.

As Figure 2 shows, 9.6% of the learners were enrolled in Grade 1 and 4.6% were enrolled in Grade 12. This means that for every Grade 12 learner there were 2.1 Grade 1 learners.

Nationally, a downward trend in learner numbers is reflected for the period 2000 to 2001, while the opposite is true for the period 2001 to 2006 (see Table 5 and Figure 3).

Figure 3: Trend line of learners in ordinary public and independent schools from 2000 to 2006

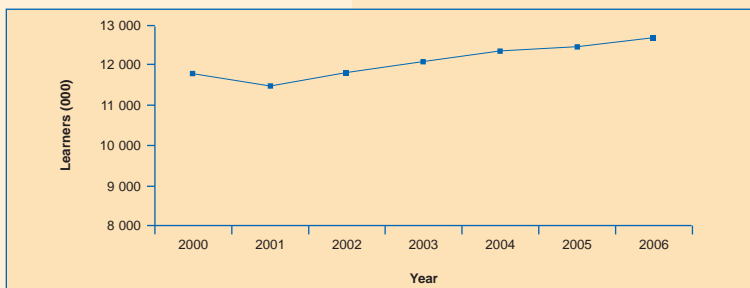


Table 6 reflects some indicators: (a) 2.8% of learners were in independent schools, with the highest percentage (8.6%) in Gauteng; (b) when counting all educators, the LER for public schools was 32.6, while, when counting only state-paid educators in these schools, the LER increased by 7.1% (to 34.9); (c) the GER for Grades 1 to 12 was 98%, with two provinces (Limpopo and Mpumalanga) higher than 100%; and (d) the GPI was 1.01, with three provinces (Eastern Cape, Gauteng and Western Cape) higher than 1.00, which indicates that, in proportion to the appropriate school-age population, there were more females than males in the school system in three provinces.

Table 6: Indicators for ordinary public and independent schools, by province, in 2006

Province	Learners in Independent Schools (%)	LER		Gr. 1-12	
		Public Schools, including SGB-Paid Educators	Public Schools, excluding SGB-Paid Educators	GER (%)	GPI
Eastern Cape	1.4	33.3	34.5	99	1.04
Free State	2.4	29.5	30.9	90	1.00
Gauteng	8.6	33.7	39.2	99	1.01
KwaZulu-Natal	1.7	32.8	35.1	97	0.99
Limpopo	1.5	33.4	34.0	103	0.99
Mpumalanga	2.3	34.5	36.4	102	0.99
North West	1.2	29.4	30.6	93	0.98
Northern Cape	1.3	31.8	34.1	91	0.99
Western Cape	3.0	31.1	37.0	91	1.05
National	2.8	32.6	34.9	98	1.01