



education

Department:
Education
REPUBLIC OF SOUTH AFRICA

**NATIONAL
SENIOR CERTIFICATE**

IBANGA 12

ISIXHOSA ULWIMI LWESIBINI OLONGEZELELWEYO (SAL)

IPHEPHA LESIBINI (P2)

NOVEMBA 2008

AMANQAKU: 80

IXESHA: 2 iiyure

Olu viwo lunamaphepha ali-10.

IMIYALELO

1. Abafundi kulindeleke ukuba baphendule umbuzo OMNYE kwiCandelo ngalinye.
2. ICandelo ngalinye malibhalwe kwiphepha elitsha, uze ukrwele umgca wakugqiba iCandelo elo.
3. Bhala cacileyo nacocekileyo, uwubhale kakuhle umsebenzi wakho.
4. Pela kakuhle amagama ubhale izivakalisi ezakheke kakuhle.

5. UBUDE BEEMPENDULO

ICANDELO A: Izincoko – Bhala isincoko esinamagama aphakathi kwe-150 ne-180.

ICANDELO B: Imihlathana emide – Bhala amagama aphakathi kwama-60 nama-80 umxholo kuphela.

ICANDELO C: Imihlathana emifutshane – Bhala amagama aphakathi kwama-40 nama-60 umxholo kuphela.

ICANDELO A: ZINCOKO

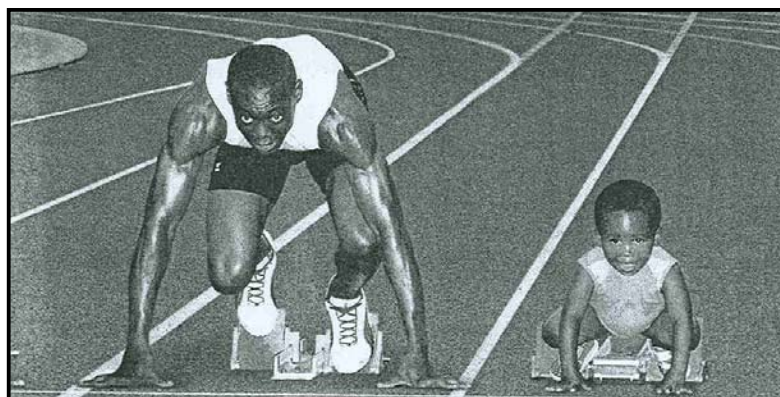
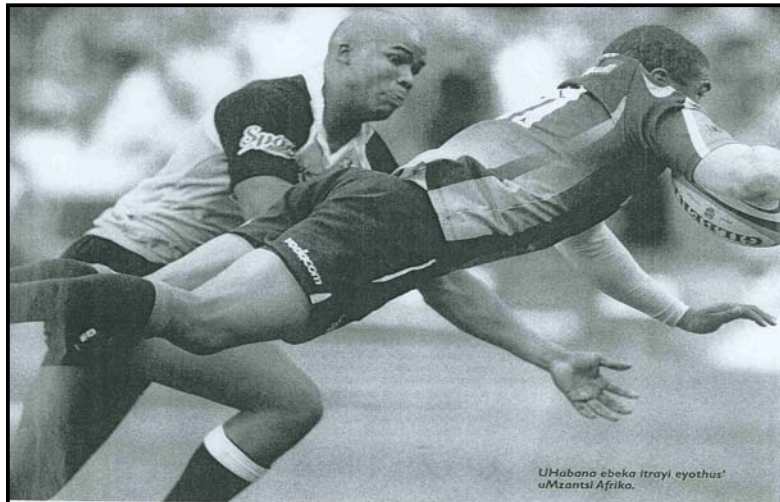
Khetha isincoko sibe SINYE kwezi zilandelayo. Bhala amagama angama-150 ukuya kuma-180.

UMBUZO 1

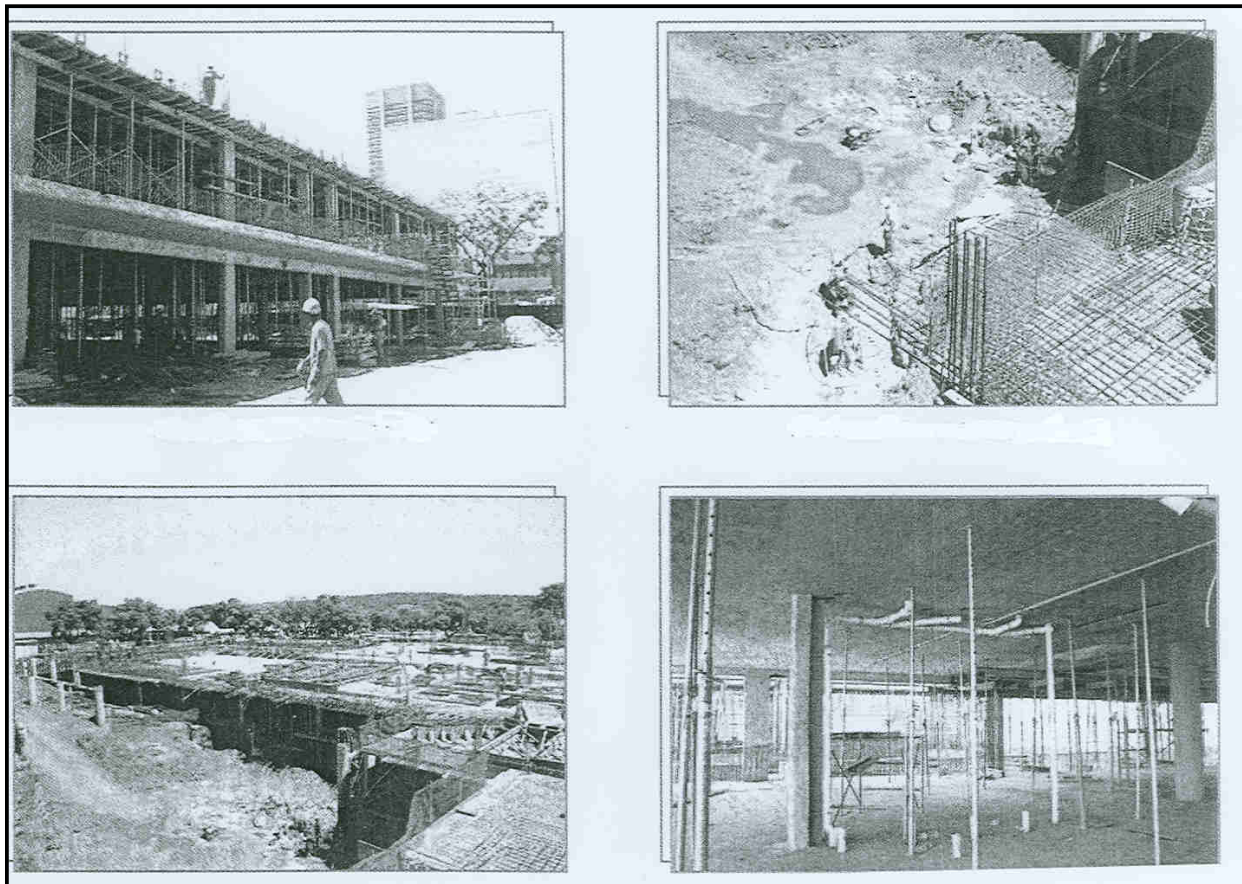
- 1.1 Emva kokubhala iimviwo zakho zebanga 12 uqinisekile ukuba uza kuziphumelela kuba uwenzile ngokwaneleyo amalungiselelo. **Balisa** ngezinto ezibe luncedo nezo ezithe zakuphazamisa.

[40]**OKANYE**

- 1.2 ISebe lezemiDlalo noLonwabo kulo Rhulumente wedemokhrasi linegalelo elikhulu ekuphuhliseni izakhono zolutsha ngakumbi olusakhulayo kwiindidi ngeendidi zemidlalo. Le mifanekiso yemidlalo ingezantsi ingakunceda ukucinga ngomdlalo owuthandayo. Bhala isincoko **usichazela** ngowona mdlalo uwuthandayo unike nezizathu zokuba uwuthande nezinto onokufuna ziphuculwe kuwo.

**[40]****OKANYE**

1.3 **Chaza** indlela uRhulumente asebenza ngayo ukuphuhlisa uluntu jikelelele engajonganga *bala nasini*. Ingaba uyahambisana nolu luvo.



[40]

OKANYE

1.4 'Ukuba kungafiki amapolisa kuloo ndawo ngaloo mini ngendandifile.'

Bhala isincoko esinala mazwi angasentla.

[40]

OKANYE

1.5 Indlela uMphathiswa Trevor Manuel enze ngayo intetho yakhe yohlahlo-lwabiwo mali ePalamente ikwenze wanqwenela ukuba sezinyaweni zakhe ngenye imini njengoMphathiswa wezemali. **Chaza** kucaze ukuba wathini.

[40]

AMANQAKU ECANDELO A: 40

ICANDELO B: IMIHLATHANA EMIDE

Khetha umhlathana ube mNye omde kule ilandelayo. **Bhala** ama-60 ukuya kuma-80 amagama.

Bhala kwiphepha elitsha.

UMBUZO 1

- 1.1 Beniphumile nilusapho naya kutya komnye wemizi yokutyela. **Bhala** isincomo-sigxeko (izinto ozithandayo nongazithandiyo) unyathele kwezi zinto zilandelayo: Indawo, ucoceko, ukhuseleko, abasebenzi, ukutya njalo njalo.



[20]

OKANYE

- 1.2 Emva kokujonga le mifanekiso ilandelayo ube nomdla wolonwabo oluthile. **Bhalela** umhlobo wakho ileta umcele ukuba nikhe niphume niye kuzonwabisa kwenye yezi ndawo emva kokuba nigqibile ukubhala iimviwo zokuphela konyaka.



[20]

OKANYE

- 1.3 ISebe lezeMfundo leSizwe limema bonke abafundi bebanga le-12 ukuba bafake izicelo zenkxaso-mali yokuqhubela phambili nezifundo kunyaka ka-2009. Le nkxaso-mali iza kuhlawulela zonke iindleko zesikolo.

Bhalela isicelo sakho kule dilesi ilandelayo ngaphambi komhla wama-20 Novemba 2008. Director General, National Department of Education, Private Bag X113, Pretoria 2001.

[20]

OKANYE

- 1.4 Ubuphanda ufuna ulwazi oluphangaleleyo ngendlela engamkelekanga abafundi abaziphethe ngayo enefuthe elibi kwiziphumo zokuphela konyaka.

Nika le ngxelo yeziphumo zophando kumbutho wabameli babafundi [Representatives Council of Learners].



[20]

AMANQAKU ECANDELO B: 20

ICANDELO C: IMIHLATHANA EMIFUTSHANE

Khetha umhlathana ube mNye kule ilandelayo. Bhala ama-40 ukuya kuma-60 amagama.

Bhala kwiphepha elitsha.

UMBUZO 1

- 1.1 Uzakhele eyakho iselula ocinga ukuba iya kubaphatha kakuhle abayisebenzisayo.

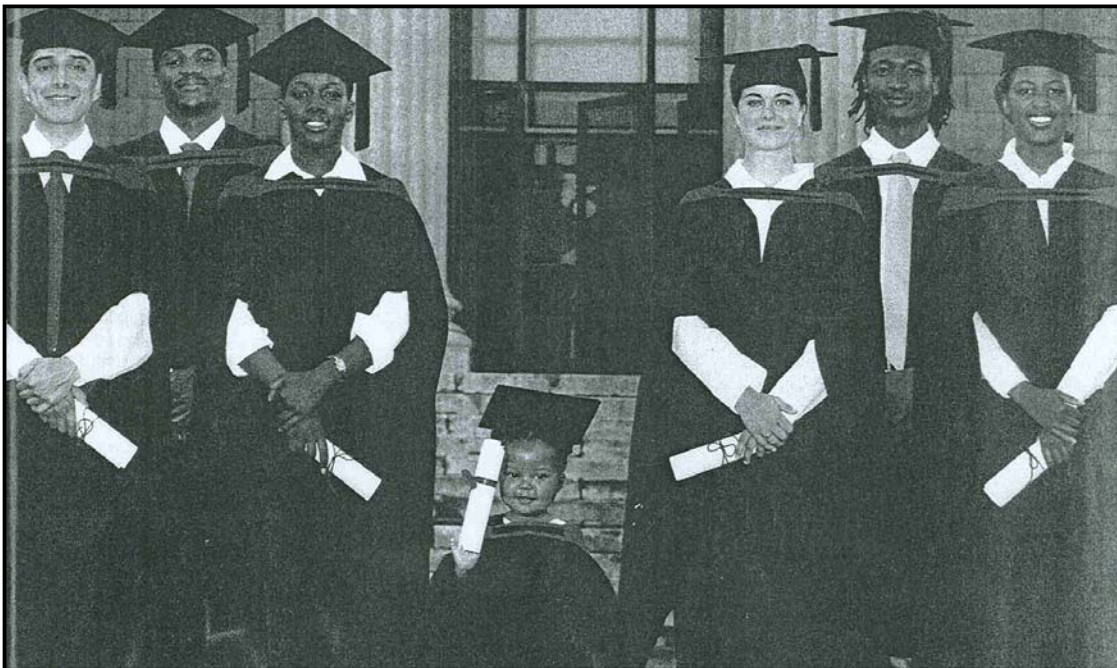
Bhala isibhengezo – ntengiso sale selula ngendlela eya kuthi itsale umdla kubathengi.

[20]

OKANYE

- 1.2 Udade/umnakwenu uphumelele izifundo zemfundo enomsila kwenye yeeYunivesithi zeli loMzantsi Afrika. Nilusapho nifuna ukumenzela itheko lokuvuyisana naye.

Bhala icwecwe lesimemo oza kulithumela kumhlobo wakho ummemela kweli theko.



[20]

OKANYE

- 1.3 Ulilungu lombutho wolutsha ekuhlaleni kwiCandelo lezeMidlalo noLonwabo, kuza kufika umntu owaziwayo kwezomculo.

Yila i**Powusta** usazisa abahlali malunga nolu tyelelo. Qaphela oku kulandelayo kwipowusta:

- Indawo
- Ixesha
- Umhla
- Amangeno

[20]

AMANQAKU ECANDELO C: 20

AMANQAKU EWONKE: 80