



basic education

Department:
Basic Education
REPUBLIC OF SOUTH AFRICA

**NATIONAL
SENIOR CERTIFICATE**

GRADE 12

ENGINEERING GRAPHICS AND DESIGN P1

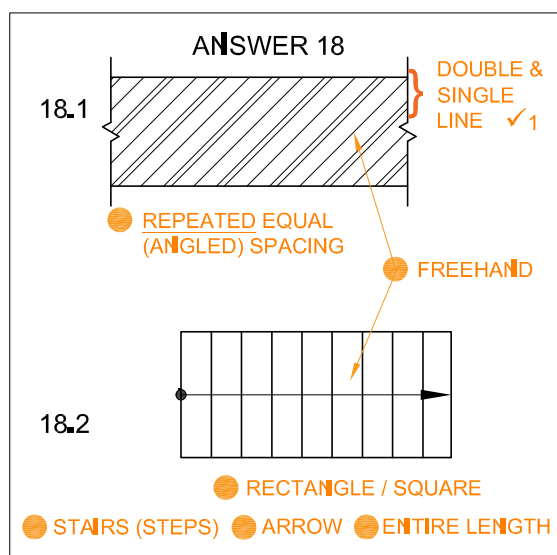
NOVEMBER 2022

MARKING GUIDELINES

MARKS: 100

These marking guidelines consist of 8 pages.

ANSWERS		
1	PROJECT NUMBER	1
2	MR N KEENAN	1
3	SITE PLAN	1
4	PRINTING	1
5	LISA B	1
6	15000	1
7	ARCHITECT and CLIENT / MR N KEENAN	2
8	2	1
9	RAINWATER DOWN-PIPE	1
10	E / SOUTH / TOP LEFT	1
11	4,57	1
12	NEW ✓ IRON / STEEL ✓	2
13	NORTH POINT	1
14	SWING / OPENING OF THE GATES	1
15	WATT METER / ELECTRICAL METER	1
16	FALL / GRADIENT / SLOPE / DROP	1
17	SOUTH WEST / SW	2
18		4
19	See below	3
20		3
	TOTAL	30



ANSWER 19
Show ALL calculations.
APPLYING CORRECT FORMULA ✓

$$P = AB + BC + CD + DE$$

$$= AB + BC + CD + DE (- \text{GATE})$$

$$= (24,23 + 8,37 + 18,38 + 31,2) - 3,6$$

$$= 78,58 \quad \checkmark \quad \text{ANSWER IN METRES} \quad \checkmark$$

ANSWER 20
Show ALL calculations.
APPLYING CORRECT FORMULA ✓

$$A = L \times B$$

$$= (10,8 \times 6) + (13,2 \times 6) + (6,7 \times 6,7)$$

$$= 64,8 + 79,2 + 44,89$$

$$= 188,89 \quad \checkmark \quad \text{m}^2$$

ANSWER IN SQUARE METRES AND m² SHOWN ✓

CONSTRUCTION SQUARE @ 45° ✓ 1

CONSTRUCTION SIZE 37 mm ✓ 2
SHAPE 72° ✓ 2

ASSESSMENT CRITERIA	
1	FRONT VIEW
2	SECTIONAL TOP VIEW
3	SECTIONAL RIGHT VIEW
SUBTOTAL	

ASSESSMENT CRITERIA

1 FRONT VIEW 7

2 SECTIONAL TOP VIEW 12 1/2

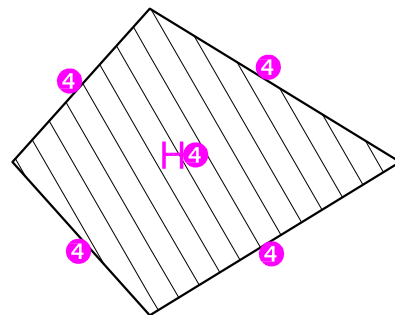
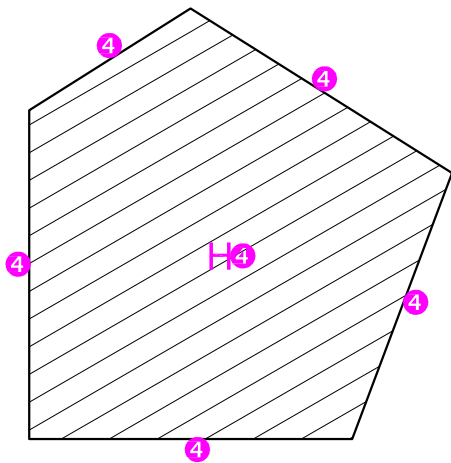
3 SECTIONAL RIGHT VIEW 10

SUBTOTAL 29 1/2

PAPER 1 QUESTION 2
GRADE 12
NOVEMBER 2022
MARKING GUIDELINES

Turn over for true shape

TRUE SHAPE
 ANY RECOGNISED METHOD ✓4



5. NOTE ON CORRECT HATCHING
 DIFFERENT DIRECTIONS ✓5

ASSESSMENT CRITERIA		
4	TRUE SHAPE	6 1/2
5	CORRECT HATCHING	1
SUBTOTAL		7 1/2

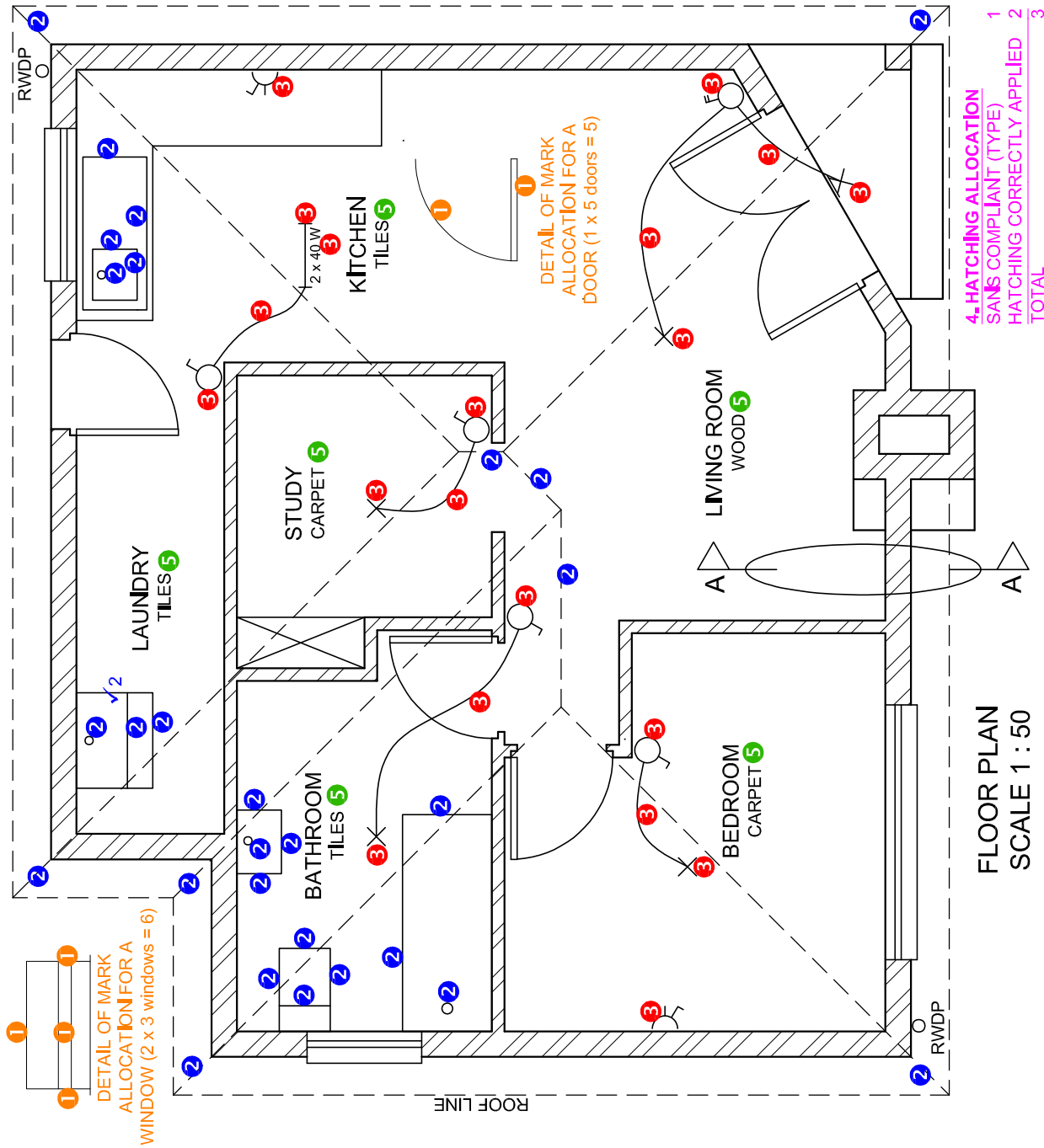
PAPER 1 QUESTION 2
 GRADE 12
 NOVEMBER 2022
 MARKING GUIDELINES

The drawing illustrates the construction of a house in perspective. The top section shows the construction process with vanishing points (RVP, LVP), horizon line (HL), and picture plane (PP). The middle section shows the completed house with colored numbers (1-5) indicating marking points for different features. The bottom section shows the final perspective drawing of the house. A table of assessment criteria is provided on the right.

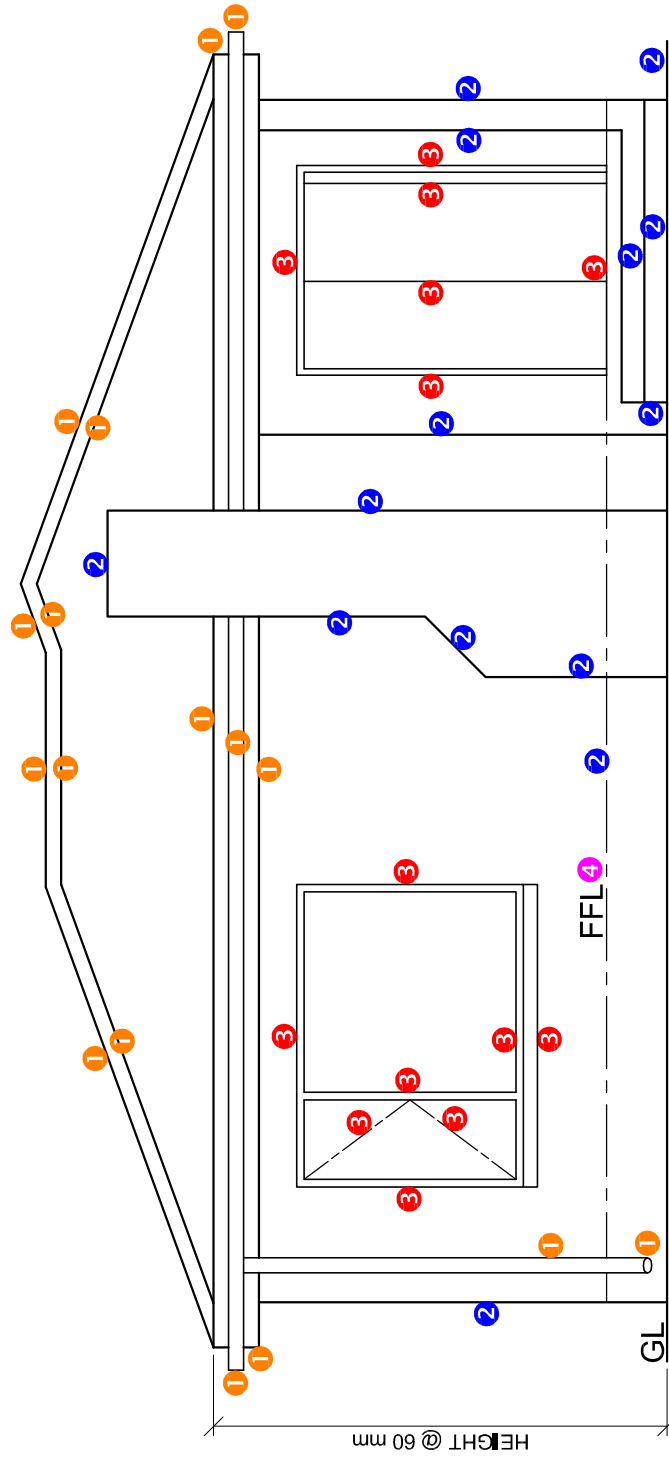
ASSESSMENT CRITERIA		
1	CONSTRUCTION	6
2	WALL + BASE	10 1/2
3	WINDOWS + OPENING	10
4	ROOF	7 1/2
5	ARC	7
TOTAL		41

PAPER 1 QUESTION 3
 GRADE 12
 NOVEMBER 2022
 MARKING GUIDELINES

ASSESSMENT CRITERIA		POSSIBLE
FLOOR PLAN		
1	DOORS + WINDOWS	11
2	FIXTURES + ROOF LINES	15
3	ELECTRICAL	10
4	HATCHING	3
5	LABELS	3
SUBTOTAL		42



PAPER 1 QUESTION 4
 GRADE 12
 NOVEMBER 2022
 MARKING GUIDELINE

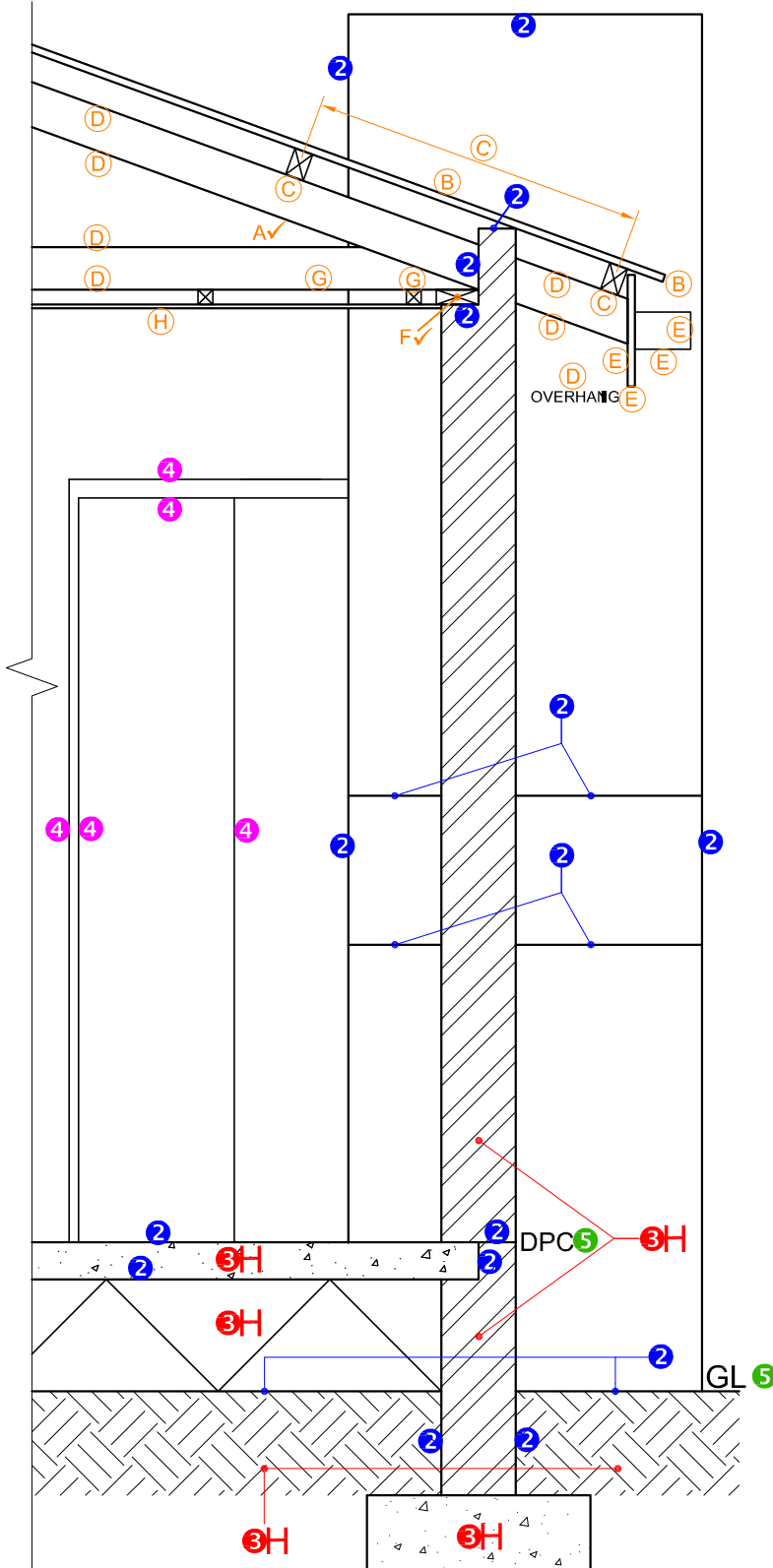


ASSESSMENT CRITERIA		SCORE
SOUTH ELEVATION		
1	ROOF + RWDP	8 $\frac{1}{2}$
2	WALLS + STEP + CHIMNEY + FFL	7
3	DOOR + WINDOW	7
4	LABELS	1
SUBTOTAL		23 $\frac{1}{2}$

1. MARK ALLOCATION FOR ROOF

A: ROOF ANGLE	1
B: ROOF SHEET	1
C: PURLIN + SPACING	1,5
D: TRUSS + OVERHANG	3,5
E: FASCIA BOARD + GUTTER	2
F: WALL PLATE	1
G: BRANDING + SPACING	1
H: CEILING BOARD	0,5
TOTAL	11,5

3. HATCHING FOR ROUGH TIMBER	
SANS COMPLIANT (TYPE)	0,5
HATCHING CORRECTLY APPLIED	0,5
TOTAL	1



SECTION A-A
SCALE 1 : 20

ASSESSMENT CRITERIA		
DETAILED SECTION		
1	ROOF DETAIL	11 1/2
2	SLAB + WALL + CHIMNEY	8
3	HATCHING	3 1/2
4	DOOR	2 1/2
5	LABELS	1
SUBTOTAL		26 1/2

PAPER 1 QUESTION 4
GRADE 12
NOVEMBER 2022
MARKING GUIDELINE