



basic education

Department:
Basic Education
REPUBLIC OF SOUTH AFRICA

EMAMAKI

LUHLOLO LWAVELONKHE LWEMNYAKA 2013 LIBANGA 2 SISWATI LULWIMI LWASEKHAYA SIVIVINYO

EMAMAKI: 30

SIKHATSI: 1 LI - AWA

IPHROVINSI _____

IDISTRIKTHI _____

SIYINGI _____

LIGAMA LESIKOLO _____

INOMBOLO YE- EMISI (emadijithi layi- 9)

--	--	--	--	--	--	--	--	--

LIBANGA (sib. 2A) _____

SIBONGO _____

LIGAMA _____

BULILI (✓)

UMFANA

INTFOMBATANE

LUSUKU LWEKUTALWA

C	C	Y	Y	M	M	D	D
---	---	---	---	---	---	---	---

Sivivinyo sinemakhasi la-13, ngaphandle kwelikhasi langaphandle.

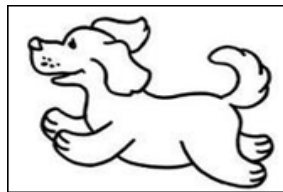
Ticondziso tathishela:

1. Fundzela bafundzi umbuto ngamunye ngalokuvakalako ungasheshisi.
2. Fundza umbuto kabili, ngalesikhatsi bafundzi balandzela emaphepheni abo.
3. Banike sikhatsi sekutibhalela timphendvulo ngekwabo etikhaleni letiniketive.
4. Uma seabacedzile, chubeka ufundze umbuto lolandzelako.
5. Landzela leyo ndlela ute ufike embutweni wekugcina.
6. Sivivinyo sinemamaki lange- 30.
7. Sikhatsi sekubhala sivivinyo ngemaminithi lange- 60.
8. Yenta imisebenti yekutilolonga nebafundzi.

Imisebenti yekutilolonga.

1. Biyela luhlavu loluseceleni nemphendvulo lefanele.

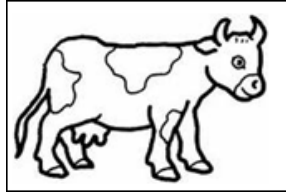
Loku ...



- A likati
- B inkhomo
- C inkhukhu
- D inj a

2. Faka luphawu (✘) ebhokisini lelifanele.

Loku ...



lika ti	
ligundvwane	
inj a	
inkhomo	✘

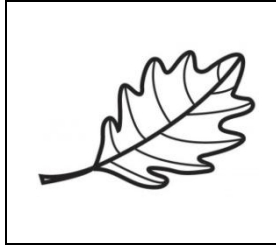
Kulesivivinyo sakho utawuphendvula leminy e imibuto lefana nalena lenicedza kuyiphendvula.

Sivivinyo sicala ekhasini lelilandzelako.

1. Phendvula imibuto lelandzelako.

1.1 Biyela luhlavu loluseceleni nemphendvulo lefanele

Loku ...

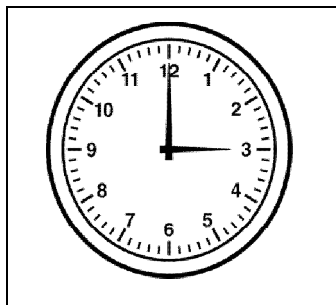


- A tjani
- B sihlahla
- C ibhola
- D licembe

1.2 Khetsa imphendvulo lefanele emabhokisini langentasi.

Bhala ligama emgceni longentasi kwesit fombe.

liwashi	lihembe	lishumi	ligabha
---------	---------	---------	---------



1.3 Biyela luhlavu loluseceleni nemphendvulo lefanele.

Ngi ... make ekuseni nangiya esikolweni.

- A vutsa
- B vuka
- C valelisa
- D vakasha

Fundza indzaba bese uphendvula imibuto 2 - 8 lengentasi.

Ngalelinye lilanga emini ngemuva kwemadina bekunemoya lomkhulu, Mandla bekaya etitolo. Asahamba njalo ehla ngemgwaco, wabona intfutfu isuka esikolweni. Wema, wehla ebhayisikilini lakhe, wagij ima ehla enyuka eceleni kwadalada. Wamemeta acela lusito kepha umoya wachubeka ubhebhethseka kungenalusito lalutfolako.

Mandla wacala kwetfuka ngalesikhatsi emalangabi aya ngekukhula asondzela etakhiweni tesikolo. Masinyane wacabanga lisu lelitsite. Wagibela libhayisikili lakhe waphutfuma waya ekhaya lathishela wakhe. Wamtjela ngalomlilo, thishela washayela sicishamlilo lucingo.

Bacishimlilo bawucisha umlilo ngembikwekutsi ufike etakhiweni tesikolo. Mandla bamgibelisa kulencola yemlilo, bamtjela kutsi ulichawe. Loku kwenta kutsi Mandla ative aj abule kakhulu.

2. Faka luphawu (✘) ebhokisini leliseceleni nemphendvulo lefanele. Khetsa sihloko lesiyifanela kahle indzaba.

Mandla utsandza thishela wakhe.	
Mandla uya esikolweni.	
Mandla unelibhayisikili.	
Mandla ulichawe.	

3. Faka luphawu (✕) ebhokisini leliseceleni nemphendvulo lefanele.

Ngubani locishe umlilo?

Ngumake waMandla.	
Nguthishela waMandla.	
Bacishimlilo.	
Bantfwana.	

4. Cedzela umusho.

Bekunemlilo e

5. Khombisa kulandzelana kwetigameko kulenzaba.

Faka tinombolo (1 – 4) emabhokisini kulemisho.

Wabona intfutfu esikolweni sakhe.	
Thishela wakhe washayela sicishamlilo.	
Mandla bekaya etitolo.	
Wahamba wayotjela thishela wakhe.	

6. Faka luphawu (✘) ebhokisini leliseceleni nemphendvulo lefanele.

Umlilo wabhebhetsaka ngekushesha ngobe ...

Mandla akamange ente lutfo.	
emasango bekakhiyiwe.	
Mandla wacala kwetfuka.	
bekulilanga lelinemoya lomkhulu.	

7. Faka luphawu (✘) ebhokisini leliseceleni nemphendvulo lefanele.

Kungani bacishimlilo bagibelise Mandla encoleni yabo?

Bacishimlilo bagibelisa Mandla encoleni ngobe ...

bekalichawe.	
bekumele aye etitolo.	
wacela kutsi bamgibelise.	
bekangafuni kuhamba ngetinyawo.	

8. Phendvula imibuto lelandzelako.

8.1 Niketa **sin**ye sizatfu lesenta kutsi uyitsandze nobe ungayitsandzi lendzaba?

.....
.....

8.2 Ngabe kwentekeni kube bacishimlilo abakawucishi umlilo?

.....
.....

9. Biyela luhlavu loluseceleni nemphendvulo lefanele.
Nguliphi ligama lelisho lokufanako naleli "kwetfuka"?

A kuchubeka

B kwesaba

C kwehla

D kugibela

10. Bhala imphendvulo lefanele emgceeni.

Ligama leliphekisa leli "emini"

11. Biyela luhlavu loluseceleni nemphendvulo lefanele.

11.1 Make u ... eka kudla kwasemini.

A bh

B ph

C kh

D ch

11.2 Mandla we ... ula eceleni kwesikolo.

A ngw

B nhl

C ndl

D nkh

12. Buka ikhalenda lengtasi bese uphendvula imibuto.

Mabasa						
Lisontfo	Umsombuluko	Lesibili	Lesitsatfu	Lesine	Lesihlanu	Umgcibelo
	1	2	3	4	5	6
7	8	9	10	11	12	13
14	15	16	17	18	19	20
21	22	23	24	25	26	27
28	29	30				

Khetsa ligama lelifanele emabhokisini langentasi.

Lesine	Umsombuluko	Lesihlanu	Lesitsatfu
--------	-------------	-----------	------------

12.1 Inyanga yaMabasa icala nge.....

12.2 Lusuku loluta ngemuva kwe-16 kuMabasa
ngu.....

12.3 wekugcina wenyanga
yaMabasa ungamhla ti-25

13. Biyela luhlavu loluseceleni nemphendvulo lefanele.

Bafana ... emabhayisikili abo.

A bagibela

B ugibela

C sigibela

D ligibela

14. Phindza ubhale imisho lelandzelako ibe ...

14.1 esikhatsini lesengcile.

Mandla ubutsa tibi endlini yakhe.

I tolo

14.2 esikhatsini lesitako.

Bacishimlilo bacisha umlilo.

Kusasa

15. Phindza ubhale lemisho.

15.1 Faka **timbili** timphawu tekubhala letifanele emshweni longentasi.

mandla utsandza sikolo sakhe

.....

15.2 Faka **lunye** lumphawu lekubhala lolufanele emshweni longentasi.

“Likuphi libhantji lami ” kubuta indvodza.

.....

16. Gcwalisa sabito lesifanele emgceni longentasi

Umfana wenta umsebenti wasekhaya.

..... wenta umsebenti wasekhaya.

17. Bhala imisho le- 5 - 8 lephatselene nesit fombe lesingentasi.



A large rectangular box containing ten horizontal dotted lines for writing.

Samba : 30