

# School Realities 2024

In 2024, there were 13 527 283 learners in ordinary public and independent schools (hereinafter collectively referred to as ordinary schools) in South Africa, who attended 24 850 schools and were served by 459 993 educators (see Tables 2 and 3). These data are from databases uploaded on the Learner Unit

Record Information and Tracking System (LURITS) and Provincial Data Warehouses as at July 2024. Approximately 99.9% of functional ordinary schools were uploaded. No imputation was done on the data. The figures in this publication are preliminary, and the final. <sup>1</sup>

**Table 1: List of abbreviations**

<b>ECD</b>	Early Childhood Development	<b>LER</b>	Learner-Educator Ratio
<b>ESR</b>	Educator-School Ratio	<b>LSR</b>	Learner-School Ratio
<b>FET</b>	Further Education and Training	<b>SGB</b>	School Governing Body
<b>GET</b>	General Education and Training	<b>SNE</b>	Special Need Education

**Table 2: Number of learners, educators and schools in ordinary school sector, by province, in 2024**

Province	PUBLIC			INDEPENDENT			PUBLIC AND INDEPENDENT					
	Learners	Educators	Schools	Learners	Educators	Schools	Learners	As % of National Total	Educators	As % of National Total	Schools	As % of National Total
Eastern Cape	1 713 162	57 217	4 990	79 269	4 456	305	1 792 431	13.3	61 673	13.6	5 295	21.3
Free State	696 717	23 684	915	21 365	1 267	83	718 082	5.3	24 951	5.4	998	4.0
Gauteng	2 329 986	76 442	2 068	340 287	21 696	937	2 670 273	19.7	98 138	20.7	3 005	12.1
KwaZulu-Natal	2 827 819	90 977	5 753	65 196	5 042	277	2 893 015	21.4	96 019	21.2	6 030	24.3
Limpopo	1 730 686	51 001	3 590	88 432	4 335	233	1 819 118	13.4	55 336	12.1	3 823	15.4
Mpumalanga	1 123 838	34 758	1 617	37 351	2 393	137	1 161 189	8.6	37 151	8.3	1 754	7.1
Northern Cape	301 911	10 301	543	7 661	592	46	309 572	2.3	10 893	2.4	589	2.4
North West	853 028	27 640	1 436	29 872	1 785	120	882 900	6.5	29 425	6.4	1 556	6.3
Western Cape	1 208 674	40 618	1 469	72 029	5 789	331	1 280 703	9.5	46 407	9.8	1 800	5.9
South Africa	12 785 821	412 638	22 381	741 462	47 355	2 469	13 527 283	100.0	459 993	100.0	24 850	100.0

Table 2 shows the number of ordinary public and independent schools, learners and educators there were in 2024. It further shows that the highest and lowest percentages of learners, educators and schools in the ordinary school sector occurred in KwaZulu-Natal and the Northern Cape, respectively. Majority of independent schools were situated in Gauteng with (937) followed by the Western Cape with 331 schools

**Table 3: Number of learners in ordinary public and independent schools by sector and province, from 2022 to 2024**

Province	LEARNERS			EDUCATORS			SCHOOLS		
	2022	2023	2024	2022	2023	2024	2022	2023	2024
Eastern Cape	1 826 150	1 806 119	1 792 431	61 404	61 303	61 673	5 311	5 285	5 295
Free State	728 844	723 621	718 082	24 343	24 575	24 951	1 029	1 021	998
Gauteng	2 611 641	2 628 047	2 670 273	93 453	94 860	98 138	2 991	2 979	3 005
KwaZulu-Natal	2 883 354	2 875 858	2 893 015	95 650	96 407	96 019	6 021	6 020	6,030
Limpopo	1 798 646	1 799 294	1 819 118	54 592	55 322	55 336	3 847	3 839	3 823
Mpumalanga	1 145 287	1 150 356	1 161 189	37 579	37 143	37,151	1 784	1 771	1 754
Northern Cape	306 056	306 653	309 572	10 667	10 869	10 893	586	586	589
North West	875 095	880 080	882 900	28 923	28 707	29 425	1 548	1 549	1 556
Western Cape	1 244 898	1 269 655	1 280 703	44 382	45 563	46 407	1 754	1 786	1 800
South Africa	13 419 971	13 439 683	13 527 283	450 993	454 749	459 993	24 871	24 836	24 850

Sources:

2022/23: As published in School Realities 2022 and 2023

From the figures reflected in Table 3 it can be deduced that, from 2022 to 2024, the number of learners increased by 0.8% nationally, and the number of educators increased by 2%, while the number of schools decreased by 0.08%.

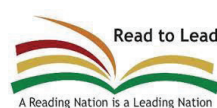
EMIS

www.education.gov.za  
Click EMIS on the left menu, then STATISTICAL PUBLICATIONS



basic education

Department:  
Basic Education  
REPUBLIC OF SOUTH AFRICA



# E M I S

**Table 4: Number of learners in ordinary schools, by province, sector, gender and grade, in 2024**

Province	Sector	Gender	Pre-Grade R Phase	GET Band													
				Foundation Phase					Intermediate Phase				Senior Phase				GET Band
				Pre-Gr. R	Gr. R	Gr. 1	Gr. 2	Gr. 3	Total	Gr. 4	Gr. 5	Gr. 6	Total	Gr. 7	Gr. 8	Gr. 9	
EC	Independent	Female	319	3 035	4 110	4 000	3 971	15 116	3 725	3 377	3 177	10 279	3 173	2 583	2 468	8 224	33 619
		Total	626	6 041	8 249	7 874	7 848	30 012	7 420	6 715	6 438	20 573	6 245	5 040	4 763	16 048	66 633
	Public	Female	921	53 386	61 471	58 816	62 087	236 681	66 264	64 606	64 266	195 136	67 082	68 684	65 742	201 508	633 325
		Total	1 720	109 299	128 504	122 860	130 030	492 413	140 022	135 792	135 586	411 400	139 178	149 720	135 987	424 885	1 328 698
	Both	Female	1 240	56 421	65 581	62 816	66 058	252 116	69 989	67 983	67 443	205 415	70 255	71 267	68 210	209 732	667 263
		Total	2 346	115 340	136 753	130 734	137 878	523 051	147 442	142 507	142 024	431 973	145 423	154 760	140 750	440 933	1 395 957
FS	Independent	Female	442	556	772	776	852	2 956	875	787	776	2 438	778	987	804	2 569	7 963
		Total	858	1 118	1 604	1 622	1 789	6 133	1 795	1 600	1 536	4 931	1 575	2 043	1 648	5 266	16 330
	Public	Female	634	19 471	24 626	24 768	25 658	94 523	27 883	27 213	26 754	81 850	27 342	32 705	27 034	87 081	263 454
		Total	1 358	38 935	50 993	50 750	53 113	193 791	58 958	56 295	54 139	169 392	56 293	69 199	53 824	179 316	542 499
	Both	Female	1 076	20 027	25 398	25 544	26 510	97 479	28 758	28 000	27 530	84 288	28 120	33 692	27 838	89 650	271 417
		Total	2 216	40 053	52 597	52 372	54 902	199 924	60 753	57 895	55 675	174 323	57 868	71 242	55 472	184 582	558 829
GP	Independent	Female	3 335	7 724	14 358	14 187	14 293	50 562	14 035	13 179	12 970	40 184	12 606	14 716	13 917	41 239	131 985
		Total	6 653	15 445	29 176	28 635	28 880	102 136	28 319	26 341	26 180	80 840	25 499	29 310	27 188	81 997	264 973
	Public	Female	2 002	59 404	94 286	93 141	93 906	340 737	96 191	94 095	93 954	284 240	93 379	94 435	90 640	278 454	903 431
		Total	4 001	118 522	193 771	190 295	191 196	693 784	196 296	190 660	188 617	575 573	187 877	199 445	180 746	568 068	1 837 425
	Both	Female	5 337	67 128	108 644	107 328	108 199	391 299	110 226	107 274	106 924	324 424	105 985	109 151	104 557	319 693	1 035 416
		Total	10 654	133 967	222 947	218 930	220 076	795 920	224 615	217 001	214 797	656 413	213 376	228 755	207 934	650 065	2 102 398
KZN	Independent	Female	872	2 240	2 928	2 768	2 937	10 873	2 762	2 557	2 496	7 815	2 474	2 901	2 603	7 978	26 666
		Total	1 774	4 315	5 674	5 528	5 663	21 180	5 333	4 942	4 842	15 117	4 780	5 362	4 679	14 821	51 118
	Public	Female	1 039	91 224	100 084	95 763	99 678	386 749	107 413	104 318	103 384	315 115	105 580	112 024	109 763	327 367	1 029 231
		Total	2 072	183 699	207 742	197 828	206 417	795 686	223 548	214 362	212 104	650 014	215 890	244 457	228 743	689 900	2 134 790
	Both	Female	1 911	93 464	103 012	98 531	102 615	397 622	110 175	106 875	105 880	322 930	108 054	114 925	112 366	335 345	1 055 897
		Total	3 846	188 014	213 416	203 356	212 080	816 866	228 881	219 304	216 946	665 131	220 670	249 819	233 422	703 911	2 185 908
LP	Independent	Female	410	3 764	4 436	4 283	4 191	16 674	3 841	3 741	3 712	11 294	3 426	3 085	2 825	9 336	37 304
		Total	797	7 456	8 735	8 564	8 334	33 089	7 792	7 493	7 275	22 560	6 748	5 990	5 413	18 151	73 800
	Public	Female	259	60 303	62 134	60 331	60 829	243 597	65 885	65 523	64 553	195 961	64 323	69 976	63 927	198 226	637 784
		Total	515	121 200	127 595	123 771	125 699	498 265	138 348	135 967	134 352	408 667	134 806	156 880	133 706	425 392	1 332 324
	Both	Female	669	64 067	66 570	64 614	65 020	260 271	69 726	69 264	68 265	207 255	67 749	73 061	66 752	207 562	675 088
		Total	1 312	128 656	136 330	132 335	134 033	531 354	146 140	143 460	141 627	431 227	141 554	162 870	139 119	443 543	1 406 124
MP	Independent	Female	317	1 078	1 705	1 650	1 720	6 153	1 688	1 498	1 416	4 602	1 406	1 123	1 033	3 562	14 317
		Total	614	2 210	3 381	3 339	3 341	12 271	3 367	2 994	2 831	9 192	2 762	2 359	2 109	7 230	28 693
	Public	Female	235	34 593	41 851	39 991	41 555	157 990	43 130	42 428	42 422	127 980	43 160	44 202	43 212	130 574	416 544
		Total	484	69 148	85 854	82 305	85 145	322 452	89 642	87 427	86 699	263 768	87 194	96 251	89 825	273 270	859 490
	Both	Female	552	35 671	43 556	41 641	43 275	164 143	44 818	43 926	43 838	132 582	44 566	45 325	44 245	134 136	430 861
		Total	1 098	71 358	89 235	85 644	88 486	334 723	93 009	90 421	89 530	272 960	89 956	98 610	91 934	280 500	888 183
NC	Independent	Female	225	329	352	347	339	1 367	321	285	242	848	245	282	264	791	3 006
		Total	443	649	698	697	685	2 729	632	579	555	1 766	512	520	476	1 508	6 003
	Public	Female	210	10 075	12 124	11 945	12 781	46 925	13 492	12 110	12 060	37 662	11 940	12 103	10 984	35 027	119 614
		Total	439	20 267	25 489	24 873	26 427	97 056	28 362	24 560	24 404	77 326	24 325	24 865	21 695	70 885	245 267
	Both	Female	435	10 404	12 476	12 292	13 120	48 292	13 813	12 395	12 302	38 510	12 185	12 385	11 248	35 818	122 620
		Total	882	20 916	26 187	25 570	27 112	99 785	28 994	25 139	24 959	79 092	24 837	25 385	22 171	72 393	251 270
NW	Independent	Female	71	1 074	1 675	1 472	1 421	5 642	1 366	1 310	1 219	3 895	1 205	978	872	3 055	12 592
		Total	153	2 132	3 292	2 981	2 902	11 307	2 842	2 604	2 457	7 903	2 393	2 024	1 732	6 149	25 359
	Public	Female	192	27 336	32 500	31 727	31 902	123 465	34 364	33 381	33 254	100 999	33 752	37 425	33 138	104 315	328 779
		Total	375	55 120	67 096	65 020	65 906	253 142	72 220	68 528	68 013	208 761	69 254	81 076	66 186	216 516	678 419
	Both	Female	263	28 410	34 175	33 199	33 323	129 107	35 730	34 691	34 473	104 894	34 957	38 403	34 010	107 370	341 371
		Total	528	57 252	70 388	68 001	68 808	264 449	75 062	71 132	70 470	216 664	71 647	83 100	67 918	222 665	703 778
WC	Independent	Female	820	1 824	3 173	3 051	3 030	11 078	2 875	2 752	2 788	8 415	2 701	2 979	2 918	8 598	28 091
		Total	1 493	3 588	6 216	6 120	6 068	21 992	5 826	5 516	5 462	16 804	5 294	5 854	5 668	16 816	55 612
	Public	Female	807	35 637	48 915	48 359	51 619	184 530	52 718	49 358	49 549	151 625	48 605	51 482	48 452	148 539	484 694
		Total	1 646	71 060	100 721	98 799	104 598	375 178	109 393	100 549	98 126	308 068	96 540	101 409	91 945	289 894	973 140
	Both	Female	1 627	37 461	52 088	51 410	54 649	195 608	55 593	52 110	52 337	160 040	51 306	54 461	51 370	157 137	512 785
		Total	3 139	74 648	106 937	104 919	110 666	397 170	115 219	106 065	103 588	324 872	101 834	107 263	97 613	306 710	1 028 752
National	Independent	Female	6 811	21 624	33 509	32 534	32 754	120 421	31 488	29 486	28 796	89 770	28 014	29 634	27 704	82 904	293 095
		Male	6 600	21 330	33 516	32 826	32 756	120 428	31 838	29 298	28 780	89 916	27 794	28 868	25 972	82 634	292 978
	Public	Total	13 411	42 954	67 025	65 360	65 510	240 849	63 326	58 784	57 576	179 686	55 808	58 502	53 676	165 538	586 073
		Female	6 299	391 429	477 991	464 841	480 015	1 814 276	507 340	493 032	490 196	1 490 568	495 163	523 036	492 892	1 511 091	4 815 935
	Both	Male	6 311	395 821	509 774	491 660	508 516	1 905 771	549 449	521 108	511 844	1 582 401	516 194	600 266	509 765	1 626 225	5 114 397
		Total	12 610	787 250	987 765	956 501	988 531	3 720 047	1 056 789	1 014 140	1 002 040	3 072 969	1 011 357	1 123 302	1 002 657	3 137 316	9 930 332
Both	Female	13 110	413 053	511 500	497 375	512 769	1 934 697	538 828	522 518	518 992	1 580 338	523 177	552 670	520 596	1 593 995	5 109 030	
	Total	26 021	830 204	1 054 790	1 021 861	1 054 041	3 960 896	1 120 115	1 072 924	1 059 616	3 252 655	1 067 165	1 181 804	1 056 333	3 302 854	10 516 405	

Note 1: Data exclude learners at stand-alone ECD sites and special schools.  
 Note 2: Owing to a shortage of space in the table, the male enrolment figures for ordinary public and independent schools are intentionally omitted in the provincial data, but are included in the national data.  
 Note 3: Data will be provided on request.

# E M I S

**Table 4: Number of learners in ordinary schools, by province, sector, gender and grade, in 2024 (concluded)**

Province	Sector	Gender	FET Band				Other	Total Primary (Gr. 1-7)	Total Secondary (Gr.8-12)	Total (Gr. 1-12)	Grand Total
			Gr. 10	Gr. 11	Gr. 12	Total					
EC	Independent	Female	2 126	2 010	2 352	6 488	5	25 533	11 539	37 072	40 431
		Total	4 074	3 694	4 223	11 991	19	50 789	21 794	72 583	79 269
	Public	Female	75 327	70 152	56 155	201 634	4	444 592	336 060	780 652	834 963
		Total	154 277	130 756	99 420	384 453	11	931 972	670 160	1 602 132	1 713 162
	Both	Female	77 453	72 162	58 507	208 122	9	470 125	347 599	817 724	875 394
		Total	80 898	62 288	45 136	188 322	21	512 636	344 355	856 991	917 037
		Total	158 351	134 450	103 643	396 444	30	982 761	691 954	1 674 715	1 792 431
FS	Independent	Female	831	739	615	2 185	0	5 616	3 976	9 592	10 590
		Total	1 650	1 400	1 127	4 177	0	11 521	7 868	19 389	21 365
	Public	Female	33 913	25 488	20 221	79 622	0	184 244	139 361	323 605	343 710
		Total	68 856	47 160	36 844	152 860	0	380 541	275 883	656 424	696 717
	Both	Female	34 744	26 227	20 836	81 807	0	189 860	143 337	333 197	354 300
		Total	35 762	22 333	17 135	75 230	0	202 202	140 414	342 616	363 782
		Total	70 506	48 560	37 971	157 037	0	392 062	283 751	675 813	718 082
GP	Independent	Female	13 207	12 183	10 601	35 991	11	95 628	64 624	160 252	171 322
		Total	25 848	23 139	19 645	68 632	29	193 030	125 130	318 160	340 287
	Public	Female	105 261	84 124	66 914	256 299	54	658 952	441 374	1 100 326	1 161 786
		Total	211 643	156 946	119 816	488 405	155	1 338 712	868 596	2 207 308	2 329 986
	Both	Female	118 468	96 307	77 515	292 290	65	754 580	505 998	1 260 578	1 333 108
		Total	119 023	83 778	61 946	264 747	119	777 162	487 728	1 264 890	1 337 165
		Total	237 491	180 085	139 461	557 037	184	1 531 742	993 726	2 525 468	2 670 273
KZN	Independent	Female	2 418	2 307	2 329	7 054	38	18 922	12 558	31 480	34 630
		Total	4 268	4 000	3 961	12 229	75	36 762	22 270	59 032	65 196
	Public	Female	130 915	130 926	96 970	358 811	0	716 220	580 598	1 296 818	1 389 081
		Total	274 391	246 558	170 008	690 957	0	1 477 891	1 164 157	2 642 048	2 827 819
	Both	Female	133 333	133 233	99 299	365 865	38	735 142	593 156	1 328 298	1 423 711
		Total	145 326	117 325	74 670	337 321	37	779 511	593 271	1 372 782	1 469 304
		Total	278 659	250 558	173 969	703 186	75	1 514 653	1 186 427	2 701 080	2 893 015
LP	Independent	Female	2 636	2 431	2 559	7 626	0	27 630	13 536	41 166	45 340
		Total	5 023	4 333	4 479	13 835	0	54 941	25 238	80 179	88 432
	Public	Female	81 941	69 438	50 823	202 202	0	443 578	336 105	779 683	840 245
		Total	173 771	132 798	91 278	397 847	0	920 538	688 433	1 608 971	1 730 686
	Both	Female	84 577	71 869	53 382	209 828	0	471 208	349 641	820 849	885 585
		Total	94 217	65 262	42 375	201 854	0	504 271	364 030	868 301	933 533
		Total	178 794	137 131	95 757	411 682	0	975 479	713 671	1 689 150	1 819 118
MP	Independent	Female	1 084	1 146	1 804	4 034	0	11 083	6 190	17 273	18 668
		Total	2 249	2 305	3 379	7 933	0	22 015	12 401	34 416	37 240
	Public	Female	51 545	47 538	36 511	135 594	9	294 537	223 008	517 545	552 382
		Total	107 917	91 097	64 938	263 952	23	604 266	450 028	1 054 294	1 123 949
	Both	Female	52 629	48 684	38 315	139 628	9	305 620	229 198	534 818	571 050
		Total	57 537	44 718	30 002	132 257	14	320 661	233 231	553 892	590 139
		Total	110 166	93 402	68 317	271 885	23	626 281	462 429	1 088 710	1 161 189
NC	Independent	Female	247	214	200	661	0	2 131	1 207	3 338	3 892
		Total	439	385	391	1 215	0	4 358	2 211	6 569	7 661
	Public	Female	12 951	9 352	7 127	29 430	0	86 452	52 517	138 969	149 254
		Total	26 026	17 207	12 972	56 205	0	178 440	102 765	281 205	301 911
	Both	Female	13 198	9 566	7 327	30 091	0	88 583	53 724	142 307	153 146
		Total	13 267	8 026	6 036	27 329	0	94 215	51 252	145 467	156 426
		Total	26 465	17 592	13 363	57 420	0	182 798	104 976	287 774	309 572
NW	Independent	Female	840	720	638	2 198	41	9 668	4 048	13 716	14 902
		Total	1 699	1 414	1 161	4 274	86	19 471	8 030	27 501	29 872
	Public	Female	41 048	28 314	22 516	91 878	0	230 880	162 441	393 321	420 849
		Total	80 746	52 811	40 677	174 234	0	476 037	321 496	797 533	853 028
	Both	Female	41 888	29 034	23 154	94 076	41	240 548	166 489	407 037	435 751
		Total	40 557	25 191	18 684	84 432	45	254 960	163 037	417 997	447 149
		Total	82 445	54 225	41 838	178 508	86	495 508	329 526	825 034	882 900
WC	Independent	Female	2 786	2 661	2 398	7 845	10	20 370	13 742	34 112	36 766
		Total	5 342	5 090	4 463	14 895	29	40 502	26 417	66 919	72 029
	Public	Female	50 446	42 206	35 045	127 697	378	349 123	227 631	576 754	613 576
		Total	94 739	76 033	62 094	232 866	1 022	708 726	426 220	1 134 946	1 208 674
	Both	Female	53 232	44 867	37 443	135 542	388	369 493	241 373	610 866	650 342
		Total	46 849	36 256	29 114	112 219	663	379 735	211 264	590 999	630 361
		Total	100 081	81 123	66 557	247 761	1 051	749 228	452 637	1 201 865	1 280 703
National	Independent	Female	26 175	24 411	23 496	71 984	105	216 581	131 420	348 001	376 541
		Male	24 417	21 349	19 333	65 099	133	216 808	119 939	336 747	364 810
	Public	Total	50 592	45 760	42 829	137 083	238	433 389	251 359	684 748	741 351
		Female	583 347	507 538	392 282	1 483 167	445	3 408 578	2 499 095	5 907 673	6 305 846
	Both	Male	609 019	443 828	305 765	1 358 612	766	3 608 545	2 468 643	6 077 188	6 480 086
		Total	1 192 366	951 366	698 047	2 841 779	1 211	7 017 123	4 967 738	11 984 861	12 785 932
		Female	609 522	531 949	415 778	1 555 151	550	3 625 159	2 630 515	6 255 674	6 682 387
		Male	633 436	465 177	325 098	1 423 711	899	3 825 353	2 588 582	6 413 935	6 844 896
		Total	1 242 958	997 126	740 876	2 978 862	1 449	7 450 512	5 219 097	12 669 609	13 527 283

Note 1: Data exclude learners at stand-alone ECD sites and special schools.

Note 2: Owing to a shortage of space in the table, the male enrolment figures for ordinary public and independent schools are intentionally omitted in the provincial data, but are included in the national data.

1) Learners not grouped in any of the grades provided

**Figure 1: Percentage distribution of learners in ordinary schools, by phase, in 2024**

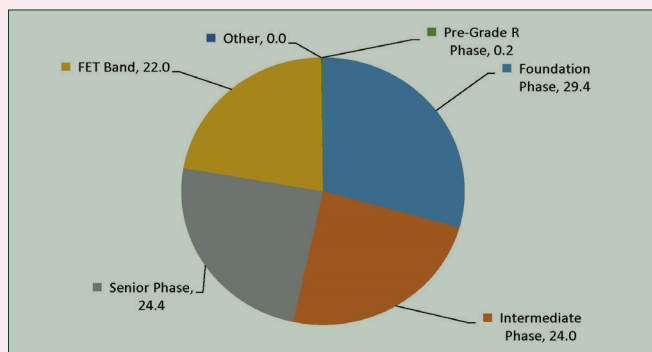


Figure 1 reveals that the highest proportion of learners in ordinary schools nationally was in the foundation phase (29.4%) followed by the senior phase and the intermediate phase with 24.4% and 24.0% respectively.

**Figure 2: Percentage distribution of female learners in ordinary schools, by grade, in 2024**

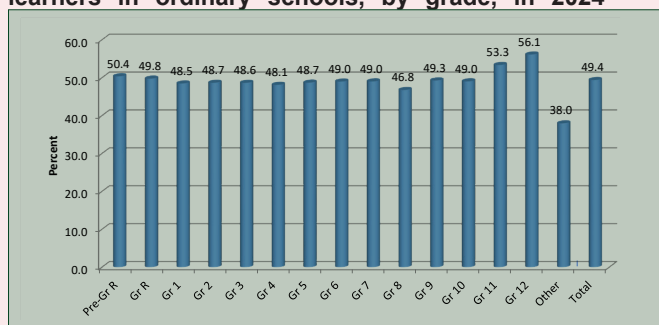


Figure 2 shows that, in the schooling system, there were more male than female (49.4%) learners. The lowest percentage of female learners in ordinary schools nationally was in Grades 8 (46.8%) and the highest percentage was in Grades 11 and 12 (53.3 and 56.1% respectively).

**Figure 3: Percentage distribution of learners in ordinary schools, by grade, in 2024**

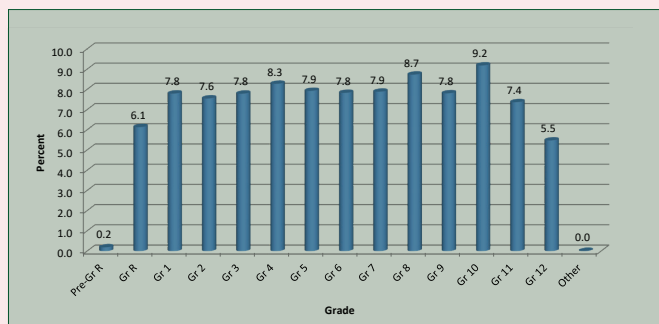


Figure 3 indicates that enrolment is generally very high in Grades 10 (9.2%) and declines as learners move to higher grades within the schooling system with 5.5% in Grade 12.

Table 5 reflects the following indicators:

(a) When counting all educators, the LER for ordinary public schools nationally was 31.3, while, when counting only state-paid educators in these schools, the LER increased to 34.7.

(b) The LSR for ordinary public schools nationally was 598, with five provinces (Free State, Gauteng, Limpopo, Mpumalanga and the Western Cape) higher than the national average

**Table 5: Indicators for ordinary PUBLIC schools, by province, in 2024**

Province	LER		LSR	ESR
	State-paid and SGB-paid Educators	State-Paid Educators <sup>1)</sup>		
Eastern Cape	30,4	34,6	343	11,3
Free State	28,9	32,0	761	26,4
Gauteng	30,6	35,4	1127	36,8
KwaZulu-Natal	31,5	34,2	492	15,6
Limpopo	34,2	35,5	668	19,5
Mpumalanga	32,6	36,0	695	21,3
Northern Cape	29,5	32,3	556	18,8
North West	31,1	33,7	594	19,1
Western Cape	30,2	35,7	823	27,2
South Africa	31,3	34,7	598	19,1

1) Underlying data not shown in the publication.

(c) The ESR for ordinary public schools nationally was 19.1, with four provinces (Free State, Gauteng, Limpopo, Mpumalanga and the Western Cape) higher than the national average.

**Figure 4: Frequency distribution of learners in ordinary PUBLIC schools in 2024**

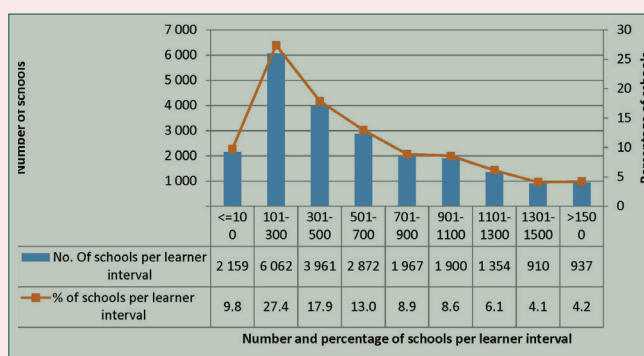


Figure 4, a histogram, shows that the highest number of ordinary public schools nationally (6 062, or 27.4%) was in the 101 to 300 learner interval. Furthermore, there were 3 961 schools (17.9%) in the 301 to 500 learner interval and 937 schools (4.2%) in the above 1 500 learner interval.

**Figure 5: Frequency distribution of LER in ordinary PUBLIC schools in 2024**

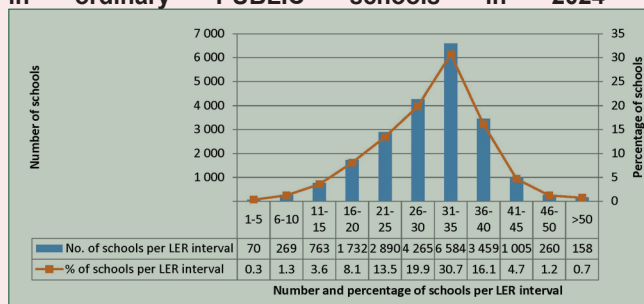


Figure 5, a histogram, reflects that the highest number of ordinary public schools nationally (6 584, or 30.7%) was in the 31 to 35 LER interval. Furthermore, there were 70 schools (0.3%) and 158 schools (0.7%) in the 1 to 5 LER interval and the above 50 LER interval respectively.