



# basic education

Department:  
Basic Education  
**REPUBLIC OF SOUTH AFRICA**

## **NATIONAL SENIOR CERTIFICATE**

**IBANGA LE-12**

**ISIZULU ULIMI LOKUQALA LOKWENGEZA (FAL)**

**IPHEPHA LOKUQALA (P1)**

**NOVEMBA 2015**

**AMAMAKI: 80**

**ISIKHATHI: Amahora ama-2**

**Leli phepha linamakhasi ayi-15.**

**IMIYALELO KWABAHLOLWAYO**

1. Leli phepha lehlukaniwe IZIQEPHU EZINTATHU:  

|             |                                |      |
|-------------|--------------------------------|------|
| ISIQEPHU A: | Isivivinyo sokuqondisisa       | (30) |
| ISIQEPHU B: | Ukufingqa                      | (10) |
| ISIQEPHU C: | Uhlelo nokusetshenziswa kolimi | (40) |
2. Fundisisa YONKE imiyalelo ngaphambi kokuba uphendule imibuzo.
3. Phendula YONKE imibuzo ekuleli phepha.
4. Qala isiqephu NGASINYE ekhasini ELISHA bese udweba umugqa emva kwaleso siqephu.
5. Bhala izinombolo zezimpendulo njengoba zibhalwe emibuzweni.
6. Shiya umugqa emva kombuzo ngamunye.
7. Qaphela upelomagama kanye nokwakheka kwemisho.
8. Ungahlukanisa isikhathi obhala ngaso ngokwalezi ziqephu:  

|             |                   |
|-------------|-------------------|
| ISIQEPHU A: | Imizuzu engama-50 |
| ISIQEPHU B: | Imizuzu engama-30 |
| ISIQEPHU C: | Imizuzu engama-40 |
9. Bhala ngobunono nangesandla esifundekayo.

**ISIQEPHU A: ISIVIVINYO SOKUQONDISISA****UMBUZO 1**

1.1 Fundisisa UMBHALO A bese uphendula imibuzo ezolandela.

**UMBHALO A (Ofundwayo)****IMPILO KANOLLIN**

UNollin wazalelwa eMelika, e-New York ngonyaka we-1983. Umama wakhe wayengudokotela kuyo le ndawo. Wabe enolwazi olubanzi ngezifo ezingalapheki. Ubaba wakhe wabashiya uNollin enonyaka owodwa vo, waphindela eMexico ngoba wayengowokuzalwa khona. Umama kaNollin wenza konke okusemandleni ukuze ikusasa lendodakazi yakhe libe lihle.

Le ntombazane yayithanda kakhulu umdanso we-*Ballet*. Ngonyaka we-1999 uNolly njengoba ayebizwa kanjalo uma bemdlalisa, wangenela umncintiswano (competition) omkhulu womdanso. Ngenxa yomsebenzi, umama wakhe wayengeke aphumelele ukuyombukela edansa emncintiswaneni ngoba kwakufanele ayohlinza isiguli esasinekhensa esibhedlela. Akazange aphaheke kahle uNollin ngoba umama wakhe wayengeke ambone edansa. Waphatheka kabi kakhulu waze wafisa nokungayi emncintiswaneni. Yayingekho into ayengayenza ngoba kwakufanele enze umsebenzi wakhe kanti nempilo yesiguli yayibalulekile. Umndeni walesi siguli wabe ubeke ithemba lawo kuye.

Wafika uNollin ehholo, waqala umncintiswano. Washo umculo. Wangena esiteji uNollin waqalaza umama wakhe, akazange ambone. Phela wayenethemba lokuthi mhlawumbe kube noshintsho uma efika emsebenzini wakwazi ukuzombukela. Ngebhadi/Ngeshwa umama wakhe wayengabonwa. **Kwaduma ihlombe** abantu bejabulela ukungena kukaNolly esiteji. Waqala ukudansa, wazisonta, waya phezulu waya phansi. Udansa nje inhliziyi yakhe yayingekho emdansweni ngoba wayecabanga ngomama wakhe. Kwathi abantu besathathekile ngomdanso wakhe wawa bhu phansi. Abantu basukuma kwaba nomsindo omkhulu bemangele, imenenja yakhe yaphuthuma kuye. Yambuza ukuthi kwenzenjani. Akazange aphenndule wavele wakhala izinyembezi. Bonke abantu badumala bebona lokhu.

Kuthe kusenjalo wathola umyalezo owawuthi akaphuthume esibhedlela ngoba umama wakhe wayeselimele engozini yemoto. Wangena nezicabha esibhedlela kodwa kwakungasazi lutho ngoba akabange esamfica, **wayesethule**. Watshelwa ukuthi umama wakhe ulimale ephuthuma ukuyombuka edansa. Wabona ukuthi wayefuna ukumjabulisa ngokuza emdansweni. Wazibona engumuntu omubi ozicabangela yena kuphela. Kusukela ngalelo langa uNollin wathatha isinqumo sokuthi angeke aphinde adanse empilweni yakhe.

Akabange esathanda ukuhlala e-New York. Wahamba wayohlala nobaba wakhe eMexico. Kwaba nzima ngoba wayengenabo abangani kulelo zwe. Babehlala ngokuxabana njalo nobaba wakhe ngoba wayemsola ngokuthi ukudansa kwakhe yikho okwenza ukuthi umama wakhe abe sengozini yemoto. Wayecasulwa ukuthi sekufanele ahlale naye kanti yena wayeziphilela impilo yakhe. Kwakuthi njalo uma ubaba wakhe esephuzile amshaye amxoshe athi akaphindele e-New York. UNolly wagcina esesebenza wazitholela indawo yakhe yokuhlala.

Emva kwesikhashana uNolly wathola umngani, uDilo. Babehamba ndawonye ezindaweni zokuzijabulisa. UDilo wamfundisa imidanso namasiko angakubo eMexico. Ubungani babo bakhula bafika kwelinye izinga. UNolly wayemethemba umngani wakhe waze wamxoxela nangaye kanye nomndeni wakhe. Wamxoxela nesizathu sokushona kukamama wakhe. UDilo wameluleka ngokuthi angazibeki icala ngokushona kwakhe, akaqhubeke nempilo. Wamkhuthaza ukuthi akaphindele emdansweni. Emva kwesikhathi wabuyela. Waqala ukuzilolonga njalo uma ebuya emsebenzini.

Wangenela umncintiswano womdanso wonyaka eMexico. Wadansa ngendlela emangalisayo. Bonke abantu babethathekile, bemangele, babengakaze babone umdanso oseqophelweni/osezingeni eliphezulu kangaka. Wayekhipha olunye unyawo ngokuhlenganisa i-*Ballet* kanye nomdanso waseMexico.

UNollin waduma umhlaba wonke. Wawina iNdebe yoMhlaba emncintiswaneni wokudansa owawungonyaka wezi-2002. Kwathi ngonyaka wezi-2005 washada noDilo. UDilo waba ngumqeqeshi omusha nemenenja yakhe. Bathola abantwana ababili nabo babengompetha emdansweni njengomama wabo. Impela **ukhamba lufuze imbiza**.

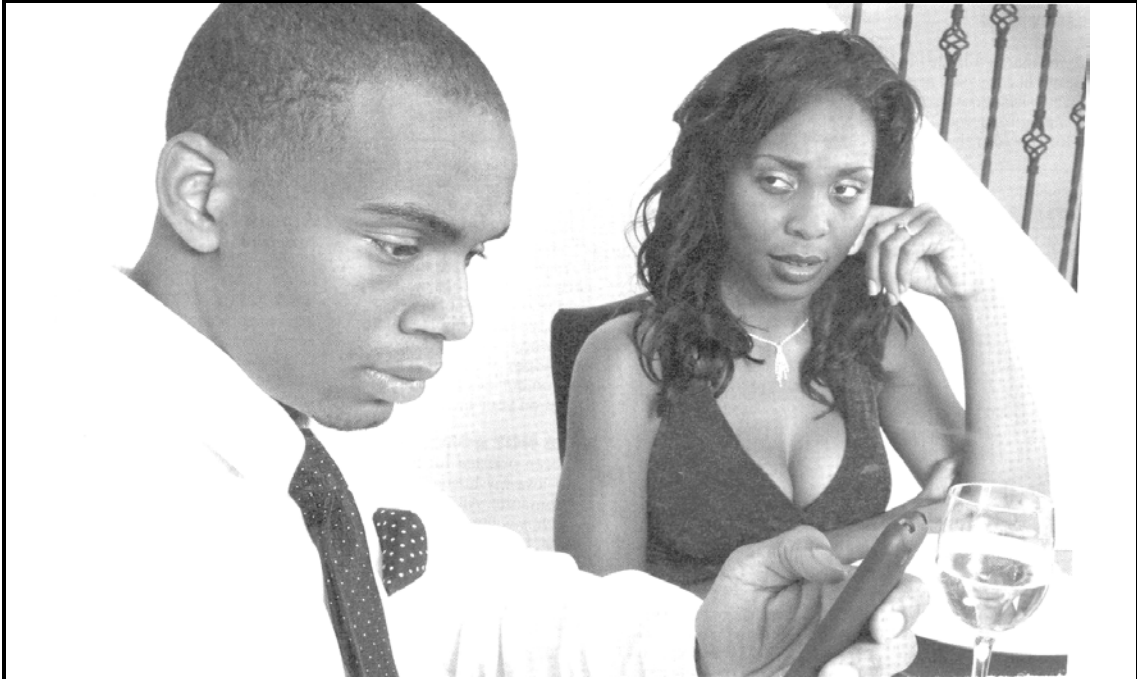
[Icashunwe emdlalweni i-*The Last Dance* yabe isihlelwa kabusha]

- 1.1.1 Wazalwa nini uNollin? (1)
- 1.1.2 Yini ayedume ngokuyenza uNollin? (1)
- 1.1.3 Umama kaNollin wayengeke aphumelele ukuyombuka edansa emncintiswaneni. Bhala isizathu esasenza ukuthi angaphumeleli. (2)
- 1.1.4 Gcwalisa isikhala ngempendulo efanele emshweni olandelayo:  
UDilo noNollin babenezingane ezi ... (1)
- 1.1.5 Yisiphi isigameko esenzeka ngesikhathi kuqhubeka umncintiswano? (2)
- 1.1.6 Tomula umusho endabeni ositshela ukuthi abazali bakaNollin behlukana. (2)

- 1.1.7 Yini eyayenza umdanso kaNollin wehluke ngesikhathi edansa eMexico? (2)
- 1.1.8 Igama elibhalwe ngokugqamile emshweni olandelayo liqukethe hlobo luni lwesifengqo?  
Akabange esamfica, **wayesethule.** (1)
- 1.1.9 Bhala incazelo yezimo zokukhuluma ezilandelayo:  
(a) Kwaduma ihlombe. (2)  
(b) Ukhamba lufuze imbiza. (2)
- 1.1.10 Yibuphi ubunzima uNollin ahlangabezana nabo empilweni yakhe? Bhala amaphuzu AMABILI. (2)
- 1.1.11 Ukuhlangana kukaNollin noDilo kwaba namuphi umthelela ethalenti likaNollin lokudansa? Bhala amaphuzu AMABILI. (4)
- 1.1.12 UDilo wayekwazi ukudansa. Sekela lesi sitatimende. (2)

1.2 Bukisisa lesi sithombe bese uphendula imibuzo ezolandela.

**UMBHALO B (Obukwayo)**



Namuhla usuku lukaSdumo lokuzalwa. UBusi umkhiphile bayodla idina/isdlo sakusihlwa erestorenti eyaziwa kakhulu ngokuhanjelwa ngabantu abadla izambane likapondo wamthengela nesipho. USdumo selokhu befikile erestorenti uya-SMSa akamnakile.

[Isithombe sicashunwe ku-*Bona* 2014]

- 1.2.1 Ukwenzenjani uku-SMSa? (2)
- 1.2.2 Yini ekhombisa ukuthi uBusi akayithandi le nto eyenziwa uSdumo? (1)
- 1.2.3 Khetha impendulo efanele kwezilandelayo:  
Ukudla izambane likapondo: Lesi simo sokukhuluma sisho:
- A Ukuthandana  
B Ukuba nemali eningi  
C Ukuba isifundiswa  
D Ukuba nomakhalekhukhwini (1)
- 1.2.4 Ukuba wawunguBusi wawuzokwenzenjani kulesi simo? Sekela impendulo yakho. (2)

**AMAMAKI ESIQEPHU A: 30**

**ISIQEPHU B: UKUFINGQA****UMBUZO 2**

Fundisisa lesi siqeshana esingezansi esikhuluma ngokubaluleka kwezinja bese usifingqa ngamaphuzu ayi-7.

**IMIYALELO**

1. Bhala amaphuzu ayi-7 ngemisho ephelele. Amagama akho angeqi/angadluli kwangama-60.
2. Imisho yakho mayibe nezinombolo kusukela kweyoku-1 kuya kweye-7.
3. Bhala iphuzu elilodwa emshweni ngamunye.
4. Bhala ngamagama akho.
5. Ekugcineni kwamaphuzu wonke owabhalile bhala inani lamagama owasebenzisile.

**UMBHALO C****UKUBALULEKA KWEZINJA**

Inja yisilwane esibalulekile emphakathini. Iyakwazi ukuqeqeshwa/ukufundiswa ukuze isize ezimweni ezechukene. Abanye abantu abazithandi izinja ngoba ziyangcolisa, ziyizindleko futhi zibanga umsindo.

Inja ingumngani weqiniso kumnikazi wayo, iyamazi ngisho ephakathi kwabantu abaningi. Umnikazi wayo uma evelelwa yingozi iyakhonkotha ukuze babone abanye abantu ukuthi kukhona inkinga ekhona banikeze usizo. Inja inothando lweqiniso ngisho umnikazi engayithengeli ukudla kodwa uma efika iyamjabulela.

Amaphoyisa ayazisebenzisa izinja ukufuna umuntu olahlekile. Ziyaye zinukiswe impahla yalowo muntu olahlekile khona zizolazi iphunga lakhe. Ziyasetshenziswa futhi nokuhogela/ukunuka izidakamizwa kubantu nasezimpahleni. Izinga ezifundiswe kahle zikwazi ukuhogela izidakamizwa kanye namabhomu.

Imizi eminingi ifuye izinja ukuze zigade amakhaya angagqezekwa kalula. Kukhona izinja eziluma ngempela, isigebengu singacabangi ngisho ukungena kulowo muzi. Kukhona izinja ezifuyelwa ukuzingela, eziluhlobo olungakhuluphali olubizwa ngama-Greyhound. Lezi zinja zinde zinejubane elishiya isithunzi. Ziyakwazi ukujaha izinyamazane nonogwaja.

Izinga ziwusizo olukhulu emphakathini kubantu abangaboni emehlweni, abayizimpumpethe. Lezi zinja ziyafundiswa ukuze zikwazi ukusiza loyo ongaboni. Umuntu ongaboni emehlweni akehlukani nenja yakhe, baba ngamathe nolimi. Iyamsiza uma esengozini.

Kukhona ezifundiswa ukuthunywa njengabantu. Uma kufika incwadi yeposi noma iphephandaba ziyalilanda zililethe endlini. Ezinye ziqoqa izinto zizibeke ezindaweni zazo.

Kukhona izinja ezaziwa ngokuhlakanipha ezibizwa ngokuthi ama-German Shepherd. Abanye bahlanganisa olunye uhlobo nalezi ezihlakaniphile ukuze zizalane zande. Lokhu kuyasiza ngoba aluluningi lolu hlobo lwezinja ezihlakaniphile.

Kubalulekile ukuthi izinja zinakekelwe kahle, uma zigula ziyiswe kodokotela bazo ukuze ziphile isikhathi eside. Izinja zifana nelungu lomndeni yingakho zinikwa amagama.

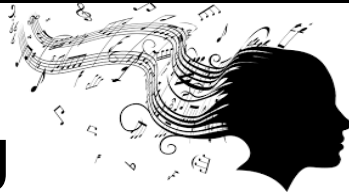
[Umbhalo wokuziqambela]

**AMAMAKI ESIQEPHU B: 10**



**ISIQEPHU C: UHLELO NOKUSETSHENZISWA KOLIMI****UMBUZO 3**

3.1 Bukisisa lesi sikhangisi bese uphendula imibuzo ezolandela.

**UMBHALO D (Ofundwayo nobukwayo)****INDUMEZULU****YEKHONSATHI****LOMCULO**

**Thenga ithikithi lakho manje, uthole ukudla kwendlebe!**

**Woza nomndeni, abangani nozakwenu nizothamela umculo onhlobonhlobo.**

*UMASIKANDI - I-JAZZ - IHIP-HOP - OWOKHOLO - ISICATHAMIYA*

**INDAWO:**

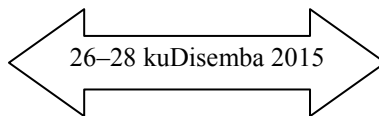
Ingwe Dam, eJozini

**ISIKHATHI:**

Iqala ngehora le-9 ekuseni

Iphele ngehora le-11 ebusuku

**Kuboshelwe Izinkakha Zomculo.**



**PHUTHUMA E-COMPUTICKET UNGASALI!**

**LELI KHONSATHI LIHLELWE YINKAMPANI YASEJOZINI YEZOKUNGCEBELEKA**

**ABAXHASI BEKHONSATHI :**

ISIDINGO CASH AND CARRY  
BUYA BUILDING CONSTRUCTIONS  
AMANDLA TAVERN  
UBISI LIVESTOCK

Imithetho Nemibandela

Abuvumelekile utshwala.  
Amathikithi awatholakali esangweni.

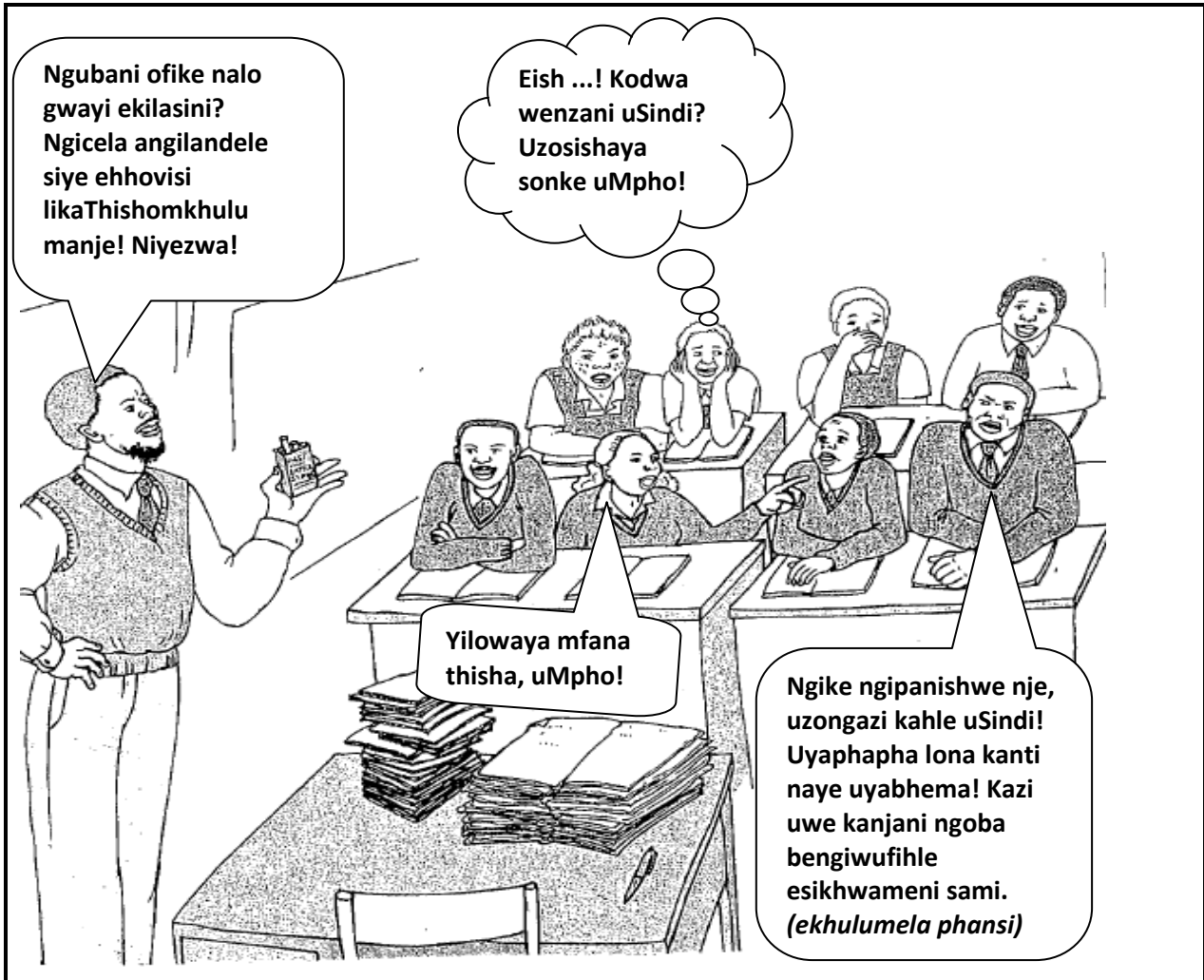
[Umbhalo wokuziqambela]

- 3.1 Bhala uhlobo OLULODWA lomculo oluzoculwa ekhonsathini ekhangiswayo. (1)
- 3.2 Leli khonsathi lizothatha izinsuku ezingaki? (1)
- 3.3 Khetha impendulo efanele kwezilandelayo:  
Isimo sokukhuluma esibhalwe ngokugqamile emshweni olandelayo sisho:  
Thenga ithikithi lakho manje, uthole **ukudla kwendlebe!**
- A Inkulumo  
B Umculo  
C Umdanso  
D Umthandazo (1)
- 3.4 Yini okufanele uyenze uma ufuna ukuya kule khonsathi? (1)
- 3.5 Obani abasize inkampani yezokungcebeleka ukuthi iphumelele ukwenza le khonsathi? Bhala ABABILI. (2)
- 3.6 Ukusetshenziswa kwezithombe kulesi sikhangisi kunamthelela muni? (2)
- 3.7 Ngokucabanga kwakho yini eyenza ukuthi kube nombandela othi abantu bangangeni notshwala? Sekela ngamaphuzu AMABILI. (2)
- [10]**

**UMBUZO 4**

Bukisisa le khathuni bese uphendula imibuzo ezolandela.

**UMBHALO E (Ofundwayo nobukwayo)**



[Sicashunwe ku-[www.cartoons.com](http://www.cartoons.com)]

- 4.1 Ngubani ofike nogwayi ekilasini? (1)
- 4.2 Uwuthole kanjani uthisha ugwayi? (1)
- 4.3 Gcwalisa leli thebula lesabizwana sokukhomba elilandelayo:
 

| Eduze     | Buqumama  | Kude   |
|-----------|-----------|--------|
| 4.3.1 ... | 4.3.2 ... | lowaya |

 (2)
- 4.4 Ukusetshenziswa kophawu lwezibabazo enkulumweni kathisha kunamthelela muni kubafundi? (2)
- 4.5 Ngokucabanga kwakho ukubhema ugwayi kuletha ziphi izinkinga empilweni yomuntu? Bhala amaphuzu AMABILI. (2)
- 4.6 USindi akamesabi uMpho. Sekela lesi sitatimende. (2)

**[10]**

**UMBUZO 5**

5.1 Fundisisa lesi siqeshana bese uphendula imibuzo ezolandela.

**UMBHALO F (Ofundwayo)**

Utshwala bulibulele izwe. Kungani abantu bephuza utshwala kangaka? Abantu baphuza kakhulu kusukela ekuseni. Abanye baphuza kusukela **isonto** liqala lize liyophela. Kukhona izingane eziphuza njalo ngomgqibelo kusukela ngehora lesi7 ebusuku kuze kuse. Izikole kufanele zifundise abafundi ngengozi yokuphuza utshwala. Bangingi abantu abalahlekelwa imisebenzi ngenxa yokuphuza. Kukhona abantu asebehlala ezitaladini ngenxa yotshwala. Utshwala bubulala ikusasa lakho. Umuntu ophuze utshwala wenza izinto ezimbi. Abanye bagcina bengene etilongweni kuphele ngekusasa labo.

Odokotela bakhuthaza ukuthi abantu baphuze amanzi ngoba anempilo. Kufanele badle ama-olintshi, ama-aphula, obhanana namapentshisi. Izifo eziningi zingaphela nya ngokuphuza amanzi. Yonga imali uphuze amanzi.

[Umbhalo wokuziqambela]

5.1.1 Bhala lo musho olandelayo ukhombe inkathi yamanje eqhubekayo.

Abantu baphuza kakhulu. (1)

5.1.2 Bhala isifinyezo/isifinyezi segama elibhalwe ngokugqamile emshweni olandelayo:

**Odokotela** bakhuthaza ukuthi abantu baphuze amanzi ngoba anempilo. (1)

5.1.3 Bhala uhlobo lwesifengqo oluqukethwe yilo musho olandelayo:

Utshwala bulibulele izwe. (2)

5.1.4 Guqula/Shintsha igama elikubakaki libe ongumnini/ubumnini.

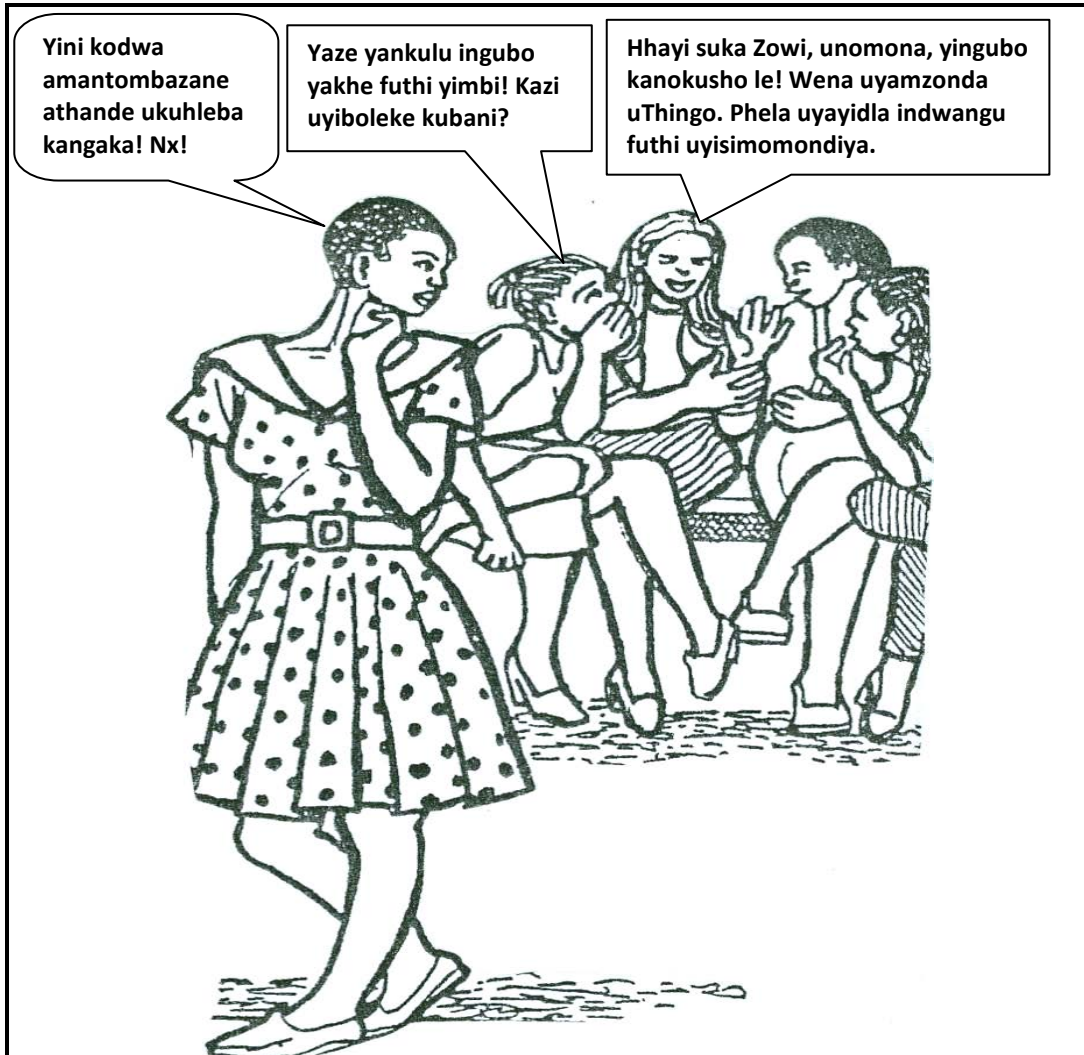
Abantu bahlala ezitaladini (idolobha) ngenxa yotshwala. (1)

5.1.5 Tomula isenzukuthi esiqeshini esingenhla bese usisebenzisa emshweni ozakhele wona. (2)

- 5.1.6 Khetha impendulo efanele kwezilandelayo:  
Isenzo esibhalwe ngokugqamile emshweni olandelayo sikuyiphi indlela?  
**Yonga** imali, uphuze amanzi.  
A Indlela yamandla  
B Indlela ephoqayo  
C Indlela esabizo  
D Indlela eyamile/encikile (1)
- 5.1.7 Bhala ibizoqoqa esikhundleni sala magama abhalwe ngokugqamile emshweni olandelayo:  
Kufanele badle **ama-olintshi, ama-aphula, obhanana namapentshisi.** (1)
- 5.1.8 Lungisa amaphutha emshweni olandelayo:  
Kukhona izingane eziphuza njalo ngomgqibelo kusukela ngehora lesi7 ebusuku kuze kuse. (2)
- 5.1.9 Sebenzisa igama **isonto** emshweni ozakhele wona ukuze kuvele umqondo ohlukile kunalo osesiqeshini. (2)
- 5.1.10 Bhala igama elisho okufanayo naleli elibhalwe ngokugqamile emshweni olandelayo:  
Abanye bagcina bengene **etilongweni** kuphele ngekusasa labo. (1)

5.2 Bukisisa le khathuni bese uphendula imibuzo ezolandela:

**UMBHALO G (Ofundwayo nobukwayo)**



[Sicashunwe ku-[www.pictures.com](http://www.pictures.com)]

5.2.1 Igama elithi: Nx! Livusa muphi umuzwa? (1)

5.2.2 Hlobo luni lwenkolelo oluqukethwe yilo musho olandelayo:  
Amantombazane ayathanda ukhleba. (2)

5.2.3 Khetha impendulo efanele kulezi ezilandelayo:

Isimo sokukhuluma esibhalwe ngokugqamile emshweni olandelayo sisho ukuthi:

Hhayi suka Zowi, **yingubo kanokusho** le!

A Yingubo ebolekiwe

B Yingubo eshile

C Yingubo enkulu kakhulu

D Yingubo enhle kakhulu

(1)

5.2.4 Tomula umusho onamazwi akhombisa ukuncoma kule nkulumo yamantombazane.

(2)

[20]

**AMAMAKI ESIQEPHU C: 40**

**AMAMAKI ESEWONKE: 80**