

2010 School Realities

Published August 2010
ISBN: 978-1-4315-0191-5
Enquiries: 012 357 3677

In 2010, there were 12 260 099 learners in ordinary public and independent schools (hereinafter collectively referred to as ordinary schools) in South Africa, who attended 25 850 schools and were served by 418 109 educators (see Tables 2 and 3). These data are from the survey conducted on the 10th school day. Approximately 99.8% of functional ordinary schools submitted the survey forms, and imputation was done to establish a data set of 100%. The figures in this publication are preliminary, and the final figures will be published in the more comprehensive *Education Statistics in South Africa 2010*.

Table 1: List of abbreviations

ABET Adult Basic Education and Training	LER Learner-Educator Ratio
ECD Early Childhood Development	LSR Learner-School Ratio
ESR Educator-School Ratio	SGB School Governing Body
FET Further Education and Training	SNE Special Needs Education

Table 2: Number of learners, educators and schools in the ordinary school sector, by province, in 2010

Province	Public			Independent			Public and Independent					
	Learners	Educators	Schools	Learners	Educators	Schools	Learners	As % of National Total	Educators	As % of National Total	Schools	As % of National Total
Eastern Cape	2 003 129	66 626	5 588	49 257	2 392	154	2 052 386	16.7	69 018	16.5	5 742	22.2
Free State	638 756	23 016	1 422	15 948	834	66	654 704	5.3	23 850	5.7	1 488	5.8
Gauteng	1 776 925	57 423	2 013	197 141	12 917	472	1 974 066	16.1	70 340	16.8	2 485	9.6
KwaZulu-Natal	2 743 979	87 466	5 927	63 009	4 460	220	2 806 988	22.9	91 926	22.0	6 147	23.8
Limpopo	1 660 700	55 992	3 965	45 701	2 202	141	1 706 401	13.9	58 194	13.9	4 106	15.9
Mpumalanga	1 013 760	33 245	1 838	22 672	1 330	101	1 036 432	8.5	34 575	8.3	1 939	7.5
Northern Cape	266 296	8 617	597	3 096	229	20	269 392	2.2	8 846	2.1	617	2.4
North West	746 096	25 074	1 646	13 018	932	55	759 114	6.2	26 006	6.2	1 701	6.6
Western Cape	959 714	31 870	1 455	40 902	3 484	170	1 000 616	8.2	35 354	8.5	1 625	6.3
South Africa	11 809 355	389 329	24 451	450 744	28 780	1 399	12 260 099	100.0	418 109	100.0	25 850	100.0

Table 2 shows how many ordinary public and independent schools there were in 2010, and how many learners and educators there were in each. It further shows that the highest and lowest percentages of learners, educators and schools in the ordinary school sector occurred in KwaZulu-Natal and the Northern Cape, respectively.

Table 3: Number of learners, educators and schools in the ordinary school sector, by province, from 2008 to 2010

Province	Learners			Educators			Schools		
	2008	2009	2010	2008	2009	2010	2008	2009	2010
Eastern Cape	2 079 994	2 076 400	2 052 386	66 536	69 620	69 018	5 825	5 808	5 742
Free State	670 588	656 754	654 704	23 383	24 364	23 850	1 675	1 611	1 488
Gauteng	1 894 027	1 903 838	1 974 066	64 307	66 351	70 340	2 405	2 390	2 485
KwaZulu-Natal	2 771 420	2 816 974	2 806 988	86 983	88 996	91 926	5 938	6 066	6 147
Limpopo	1 764 669	1 707 280	1 706 401	57 083	58 563	58 194	4 122	4 105	4 106
Mpumalanga	1 051 531	1 035 469	1 036 432	33 644	35 213	34 575	1 959	1 933	1 939
Northern Cape	265 866	267 709	269 392	9 019	9 115	8 846	617	617	617
North West	779 260	777 285	759 114	26 620	26 697	26 006	1 784	1 768	1 701
Western Cape	962 008	973 136	1 000 616	33 378	32 245	35 354	1 550	1 569	1 625
South Africa	12 239 363	12 214 845	12 260 099	400 953	411 164	418 109	25 875	25 867	25 850

Sources:

2008: As published in *Education Statistics in South Africa 2008*.

2009: As published in *School Realities 2009*.

Table 3 reflects an increase in both learner and educator numbers from 2008 to 2010, but a decrease in school numbers for the same period. Furthermore, from 2009 to 2010, the learners and educators increased by 0.4% and 1.7%, respectively, while the number of schools decreased by 0.1%.



Table 4: Number of learners in ordinary schools, by province, sector, gender and grade, in 2010

Province	Sector	Gender	Pre-Grade R Phase	GET Band													
				Foundation Phase					Intermediate Phase				Senior Phase				Total (GET Band)
				Pre-Gr. R	Gr. R	Gr. 1	Gr. 2	Gr. 3	Total	Gr. 4	Gr. 5	Gr. 6	Total	Gr. 7	Gr. 8	Gr. 9	
Eastern Cape	Independent	Female	1 047	1 689	2 319	1 976	1 797	7 781	1 798	1 776	1 752	5 326	1 730	1 717	1 615	5 062	18 169
		Total	2 078	3 289	4 634	3 945	3 780	15 648	3 794	3 540	3 432	10 766	3 376	3 365	3 130	9 871	36 285
	Public	Female	6 444	80 435	96 461	82 986	80 512	340 394	81 612	80 883	80 526	243 021	80 043	76 284	70 412	226 739	810 154
		Total	12 663	161 514	201 745	173 010	168 007	704 276	172 544	167 717	163 427	503 888	159 954	151 453	136 931	448 338	1 656 302
	Both	Female	7 491	82 124	98 780	84 962	82 309	348 175	83 410	82 659	82 278	248 347	81 773	78 001	72 027	231 801	828 323
		Male	7 250	82 679	107 599	91 993	89 478	371 749	92 928	88 598	84 581	266 107	81 557	76 817	68 034	226 408	864 264
Total	14 741	164 803	206 379	176 955	171 787	719 924	176 338	171 257	166 859	514 454	163 330	154 818	140 061	458 209	1 692 587		
Free State	Independent	Female	182	376	672	619	601	2 268	607	608	601	1 816	716	687	682	2 085	6 169
		Total	394	711	1 368	1 309	1 251	4 639	1 221	1 196	1 239	3 656	1 345	1 425	1 284	4 054	12 349
	Public	Female	277	13 097	27 299	25 526	25 081	91 003	25 437	24 767	24 837	75 041	25 613	25 849	27 914	79 376	245 420
		Total	562	26 498	57 395	53 138	51 198	188 229	52 463	51 046	50 500	154 009	51 050	51 985	58 786	161 821	504 059
	Both	Female	459	13 473	27 971	26 145	25 682	93 271	26 044	25 375	25 438	76 857	26 329	26 536	28 596	81 461	251 589
		Male	497	13 736	30 792	28 302	26 767	99 597	27 640	26 867	26 301	80 808	26 066	26 874	31 474	84 414	264 819
Total	956	27 209	58 763	54 447	52 449	192 868	53 684	52 242	51 739	157 665	52 395	53 410	60 070	165 875	516 408		
Gauteng	Independent	Female	3 147	5 006	8 920	8 028	7 619	29 573	7 338	7 165	6 694	21 197	6 739	8 430	8 125	23 294	74 064
		Total	6 280	10 082	17 830	16 262	15 362	59 536	14 620	13 859	13 171	41 650	13 261	16 226	15 501	44 988	146 174
	Public	Female	2 501	33 031	79 860	74 884	72 587	260 362	71 130	70 148	71 701	212 979	73 388	75 237	75 182	224 257	697 598
		Total	5 059	66 378	166 030	152 170	147 447	532 025	144 722	142 011	143 283	430 016	146 266	149 780	149 673	445 719	1 407 760
	Both	Female	5 648	38 037	88 780	82 912	80 206	289 935	78 468	77 313	78 395	234 176	80 577	83 667	83 307	247 551	771 662
		Male	5 691	38 423	95 080	85 520	82 603	301 626	80 874	78 517	78 059	237 490	78 950	82 339	81 867	243 156	782 272
Total	11 339	76 460	183 860	168 432	162 809	591 561	159 342	155 870	156 454	471 666	159 527	166 006	165 174	490 707	1 553 934		
KwaZulu-Natal	Independent	Female	1 565	2 146	2 471	2 278	2 199	9 094	2 033	1 869	1 796	5 698	1 957	2 948	3 068	7 973	22 765
		Total	3 102	4 263	4 932	4 459	4 225	17 879	3 877	3 655	3 589	11 121	3 650	5 637	5 724	15 011	44 011
	Public	Female	3 871	84 893	118 333	102 622	101 216	407 064	104 246	103 436	105 179	312 861	106 311	119 686	117 465	343 462	1 063 387
		Total	7 506	171 278	249 554	214 133	211 460	846 425	217 435	212 723	214 730	644 888	216 174	242 410	229 808	688 392	2 179 705
	Both	Female	5 436	87 039	120 804	104 900	103 415	416 158	106 279	105 305	106 975	318 559	108 268	122 634	120 533	351 435	1 086 152
		Male	5 172	88 502	133 682	113 992	112 270	448 146	115 033	111 073	111 344	337 450	111 556	125 413	114 999	351 968	1 137 564
Total	10 608	175 541	254 486	218 592	215 685	864 304	221 312	216 378	218 319	656 009	219 824	248 047	235 532	703 402	2 223 716		
Limpopo	Independent	Female	826	1 609	1 723	1 755	1 594	6 681	1 596	1 582	1 556	4 734	1 638	1 996	1 867	5 501	16 916
		Total	1 621	3 235	3 514	3 382	3 182	13 313	3 206	3 221	3 145	9 572	3 310	3 663	3 540	10 513	33 398
	Public	Female	631	54 617	57 452	55 842	55 492	223 403	58 909	61 023	63 374	183 306	65 667	63 908	70 803	200 378	607 087
		Total	1 234	110 197	120 013	115 983	116 864	463 057	124 412	127 364	131 448	383 224	131 449	131 512	148 601	411 562	1 257 843
	Both	Female	1 457	56 226	59 175	57 597	57 086	230 084	60 505	62 605	64 930	188 040	67 305	65 904	72 670	205 879	624 003
		Male	1 398	57 206	64 352	61 768	62 960	246 286	67 113	67 980	69 663	204 756	67 454	69 271	79 471	216 196	667 238
Total	2 855	113 432	123 527	119 365	120 046	476 370	127 618	130 585	134 993	392 796	134 759	135 175	152 141	422 075	1 291 241		
Mpumalanga	Independent	Female	353	736	1 032	849	884	3 501	860	800	732	2 392	709	669	617	1 995	7 888
		Total	755	1 467	2 055	1 736	1 759	7 017	1 682	1 512	1 478	4 672	1 315	1 275	1 286	3 876	15 565
	Public	Female	1 176	24 964	41 554	37 770	37 727	142 015	39 987	39 737	40 570	120 294	41 781	41 412	40 837	124 030	386 339
		Total	2 330	50 291	87 994	78 692	78 831	295 808	83 371	82 262	82 588	248 221	83 475	84 286	81 937	249 698	793 727
	Both	Female	1 529	25 700	42 586	38 619	38 611	145 516	40 847	40 537	41 302	122 686	42 490	42 081	41 454	126 025	394 227
		Male	1 556	26 058	47 463	41 809	41 979	157 309	44 206	43 237	42 764	130 207	42 300	43 480	41 769	127 549	415 065
Total	3 085	51 758	90 049	80 428	80 590	302 825	85 053	83 774	84 066	252 893	84 790	85 561	83 223	253 574	809 292		
Northern Cape	Independent	Female	96	84	126	108	106	424	57	69	64	190	82	209	197	488	1 102
		Total	170	191	259	215	214	879	128	129	125	382	154	340	324	818	2 079
	Public	Female	396	6 036	12 272	11 347	11 119	40 774	12 067	11 193	10 856	34 116	11 337	10 432	10 222	31 991	106 881
		Total	750	12 196	25 894	23 306	22 656	84 052	25 297	23 140	21 955	70 392	22 522	21 275	20 792	64 589	219 033
	Both	Female	492	6 120	12 398	11 455	11 225	41 198	12 124	11 262	10 920	34 306	11 419	10 641	10 419	32 479	107 983
		Male	428	6 267	13 755	12 066	11 645	43 733	13 301	12 007	11 160	36 468	11 257	10 974	10 697	32 928	113 129
Total	920	12 387	26 153	23 521	22 870	84 931	25 425	23 269	22 080	70 774	22 676	21 615	21 116	65 407	221 112		
North West	Independent	Female	224	395	682	590	594	2 261	557	535	436	1 528	476	499	489	1 464	5 253
		Total	451	827	1 379	1 178	1 165	4 549	1 055	1 042	909	3 006	917	986	974	2 877	10 432
	Public	Female	522	20 427	34 299	31 326	30 759	116 811	31 621	30 173	29 194	90 988	28 340	28 931	31 656	88 927	296 726
		Total	1 101	41 183	71 941	65 420	63 231	241 775	65 855	61 456	58 982	186 293	57 003	58 025	62 291	177 319	605 387
	Both	Female	746	20 822	34 981	31 916	31 353	119 072	32 178	30 708	29 630	92 516	28 816	29 430	32 145	90 391	301 979
		Male	806	21 188	38 339	34 682	33 043	127 252	34 732	31 790	30 261	96 783	29 104	29 581	31 120	89 805	313 840
Total	1 552	42 010	73 320	66 598	64 396	246 324	66 910	62 498	59 891	189 299	57 920	59 011	63 265	180 196	615 819		
Western Cape	Independent	Female	1 266	1 387	1 752	1 496	1 461	6 096	1 420	1 466	1 360	4 246	1 452	1 522	1 581	4 555	14 897
		Total	2 404	2 773	3 426	3 020	2 963	12 182	2 846	2 869	2 715	8 430	2 794	2 980	3 172	8 946	29 558
	Public	Female	548	20 423	46 464	40 902	39 023	146 812	40 792	39 617	40 377	120 786	42 674	38 371	43 568	124 613	392 211
		Total	1 159	40 830	96 936	83 052	79 073	299 891	84 117	80 241	81 300	245 658	82 732	74 557	85 573	242 862	788 411
	Both	Female	1 814	21 810	48 216	42 398	40 484	152 908	42 212	41 083	41 737	125 032	44 126	39 893	45 149		

E M I S

Province	Sector	Gender	FET Band				Other 1)	Total Primary (Gr. 1-7)	Total Secondary (Gr. 8-12)	Total (Gr. 1-12)	Grand Total
			Gr. 10	Gr. 11	Gr. 12	Total					
Eastern Cape	Independent	Female	1 673	1 794	2 500	5 967	26	13 148	9 299	22 447	25 209
		Total	3 252	3 319	4 256	10 827	67	26 501	17 322	43 823	49 257
	Public	Female	79 009	65 939	37 487	182 435	410	583 023	329 131	912 154	999 443
		Total	148 313	117 784	66 988	333 085	1 079	1 206 404	621 469	1 827 873	2 003 129
	Both	Female	80 682	67 733	39 987	188 402	436	596 171	338 430	934 601	1 024 652
		Male	70 883	53 370	31 257	155 510	710	636 734	300 361	937 095	1 027 734
Total		151 565	121 103	71 244	343 912	1 146	1 232 905	638 791	1 871 696	2 052 386	
Free State	Independent	Female	592	594	454	1 640	0	4 424	3 009	7 433	7 991
		Total	1 207	1 149	849	3 205	0	8 929	5 914	14 843	15 948
	Public	Female	30 855	23 746	14 623	69 224	19	178 560	122 987	301 547	314 940
		Total	60 864	45 280	27 949	134 093	42	366 790	244 864	611 654	638 756
	Both	Female	31 447	24 340	15 077	70 864	19	182 984	125 996	308 980	322 931
		Male	30 624	22 089	13 721	66 434	23	192 735	124 782	317 517	331 773
Total		62 071	46 429	28 798	137 298	42	375 719	250 778	626 497	654 704	
Gauteng	Independent	Female	7 917	7 697	7 495	23 109	242	52 503	39 664	92 167	100 562
		Total	15 425	14 697	14 135	44 257	430	104 365	75 984	180 349	197 141
	Public	Female	79 454	62 042	47 077	188 573	10	514 148	338 992	853 140	888 682
		Total	160 449	118 266	85 371	364 086	20	1 041 929	663 539	1 705 468	1 776 925
	Both	Female	87 371	69 739	54 572	211 682	252	566 651	378 656	945 307	989 244
		Male	88 503	63 224	44 934	196 661	198	579 643	360 867	940 510	984 822
Total		175 874	132 963	99 506	408 343	450	1 146 294	739 523	1 885 817	1 974 066	
KwaZulu-Natal	Independent	Female	2 415	2 668	3 346	8 429	97	14 603	14 445	29 048	32 856
		Total	4 551	5 038	6 122	15 711	185	28 387	27 072	55 459	63 009
	Public	Female	112 830	103 777	70 012	286 619	1 012	741 343	523 770	1 265 113	1 354 889
		Total	225 034	200 165	128 713	553 912	2 856	1 536 209	1 026 130	2 562 339	2 743 979
	Both	Female	115 245	106 445	73 358	295 048	1 109	755 946	538 215	1 294 161	1 387 745
		Male	114 340	98 758	61 477	274 575	1 932	808 650	514 987	1 323 637	1 419 243
Total		229 585	205 203	134 835	569 623	3 041	1 564 596	1 053 202	2 617 798	2 806 988	
Limpopo	Independent	Female	1 791	1 728	2 219	5 738	18	11 444	9 601	21 045	23 498
		Total	3 481	3 296	3 836	10 613	69	22 960	17 816	40 776	45 701
	Public	Female	84 564	73 177	52 369	210 110	23	417 759	344 821	762 580	817 851
		Total	168 764	136 720	96 072	401 556	67	867 533	681 669	1 549 202	1 660 700
	Both	Female	86 355	74 905	54 588	215 848	41	429 203	354 422	783 625	841 349
		Male	85 890	65 111	45 320	196 321	95	461 290	345 063	806 353	865 052
Total		172 245	140 016	99 908	412 169	136	890 493	699 485	1 589 978	1 706 401	
Mpumalanga	Independent	Female	701	849	1 603	3 153	234	5 866	4 439	10 305	11 628
		Total	1 463	1 668	2 852	5 983	369	11 537	8 544	20 081	22 672
	Public	Female	45 051	39 899	28 951	113 901	197	279 126	196 150	475 276	501 613
		Total	88 534	74 990	53 469	216 993	710	577 213	383 216	960 429	1 013 760
	Both	Female	45 752	40 748	30 554	117 054	431	284 992	200 589	485 581	513 241
		Male	44 245	35 910	25 767	105 922	648	303 758	191 171	494 929	523 191
Total		89 997	76 658	56 321	222 976	1 079	588 750	391 760	980 510	1 036 432	
Northern Cape	Independent	Female	179	167	146	492	28	612	898	1 510	1 718
		Total	285	272	240	797	50	1 224	1 461	2 685	3 096
	Public	Female	10 490	8 300	5 681	24 471	0	80 191	45 125	125 316	131 748
		Total	20 544	15 575	10 394	46 513	0	164 770	88 580	253 350	266 296
	Both	Female	10 669	8 467	5 827	24 963	28	80 803	46 023	126 826	133 466
		Male	10 160	7 380	4 807	22 347	22	85 191	44 018	129 209	135 926
Total		20 829	15 847	10 634	47 310	50	165 994	90 041	256 035	269 392	
North West	Independent	Female	400	372	374	1 146	4	3 870	2 134	6 004	6 627
		Total	799	684	641	2 124	11	7 645	4 084	11 729	13 018
	Public	Female	31 486	23 925	16 018	71 429	186	215 712	132 016	347 728	368 863
		Total	63 449	45 961	29 689	139 099	509	443 888	259 415	703 303	746 096
	Both	Female	31 886	24 297	16 392	72 575	190	219 582	134 150	353 732	375 490
		Male	32 362	22 348	13 938	68 648	330	231 951	129 349	361 300	383 624
Total		64 248	46 645	30 330	141 223	520	451 533	263 499	715 032	759 114	
Western Cape	Independent	Female	1 454	1 442	1 583	4 479	94	10 407	7 582	17 989	20 736
		Total	2 918	2 795	3 039	8 752	188	20 633	14 904	35 537	40 902
	Public	Female	38 238	30 095	25 637	93 970	299	289 849	175 909	465 758	487 028
		Total	70 430	54 156	44 769	169 355	789	587 451	329 485	916 936	959 714
	Both	Female	39 692	31 537	27 220	98 449	393	300 256	183 491	483 747	507 764
		Male	33 656	25 414	20 588	79 658	584	307 828	160 898	468 726	492 852
Total		73 348	56 951	47 808	178 107	977	608 084	344 389	952 473	1 000 616	
South Africa	Independent	Female	17 122	17 311	19 720	54 153	743	116 877	91 071	207 948	230 825
		Male	16 259	15 607	16 250	48 116	626	115 304	82 030	197 334	219 919
	Total	33 381	32 918	35 970	102 269	1 369	232 181	173 101	405 282	450 744	
	Public	Female	511 977	430 900	297 855	1 240 732	2 156	3 299 711	2 208 901	5 508 612	5 865 057
		Male	494 404	377 997	245 559	1 117 960	3 916	3 492 476	2 089 466	5 581 942	5 944 298
	Total		1 006 381	808 897	543 414	2 358 692	6 072	6 792 187	4 298 367	11 090 554	11 809 355
Both	Female	529 099	448 211	317 575	1 294 885	2 899	3 416 588	2 299 972	5 716 560	6 095 882	
	Male	510 663	393 604	261 809	1 166 076	4 542	3 607 780	2 171 496	5 779 276	6 164 217	
Total		1 039 762	841 815	579 384	2 460 961	7 441	7 024 368	4 471 468	11 495 836	12 260 099	

Note 1: Data exclude learners at stand-alone ECD sites, special schools, ABET centres and FET colleges.

Note 2: Owing to a shortage of space in the table, the male enrolment figures for ordinary public and independent schools are intentionally omitted in the provincial data, but are included in the national data.

1) Learners not grouped in any of the grades provided – for example, SNE learners in separate classes (not those in mainstream classes) and post-matric learners.

Figure 1: Percentage distribution of learners in ordinary schools, by phase, in 2010

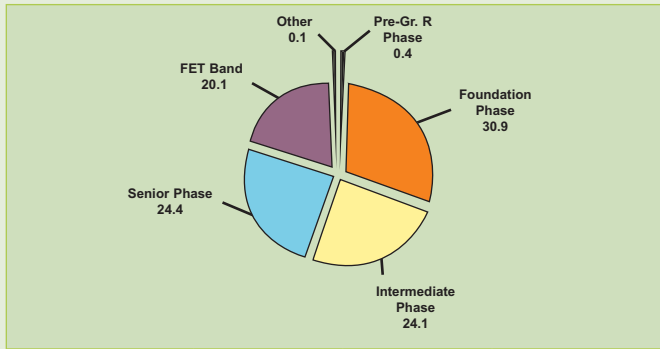


Figure 1 reveals that the highest proportion of learners in ordinary schools was located in the foundation phase (30.9%). As one moves up to higher levels within the schooling system, the proportion of learners decreases.

Figure 2: Percentage distribution of female learners in ordinary schools, by grade, in 2010

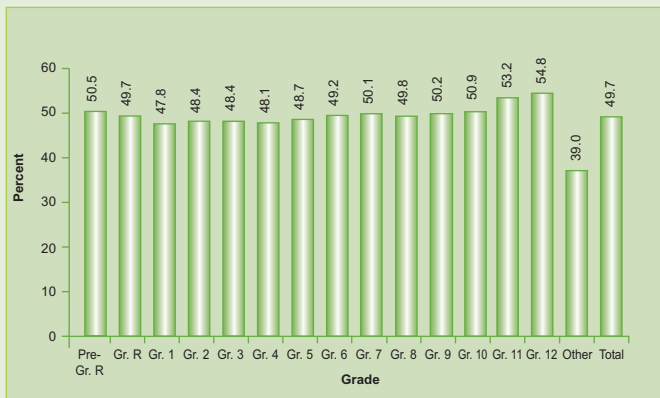
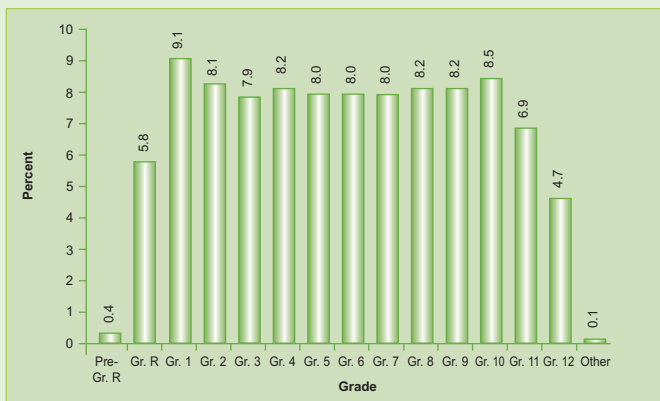


Figure 2 shows that the lowest percentage of female learners was in Grade 1 (47.8%) and the highest percentage was in Grade 12 (54.8%).

Figure 3: Percentage distribution of learners in ordinary schools, by grade, in 2010



As Figure 3 indicates, 9.1% of the learners were enrolled in Grade 1 and 4.7% were enrolled in Grade 12. This means that there were approximately two Grade 1 learners for every Grade 12 learner.

Table 5 reflects the following indicators:

(a) When counting all educators, the LER for ordinary public schools nationally was 30.3, while, when counting only state-paid educators in these schools, the LER increased to 32.2.

Table 5: Indicators for ordinary public schools, by province, in 2010

Province	LER		LSR	ESR
	State-Paid and SGB-Paid Educators	State-Paid Educators		
Eastern Cape	30.1	31.2	358	11.9
Free State	27.8	29.5	449	16.2
Gauteng	30.9	34.3	883	28.5
KwaZulu-Natal	31.4	32.9	463	14.8
Limpopo	29.7	30.1	419	14.1
Mpumalanga	30.5	31.7	552	18.1
Northern Cape	30.9	32.7	446	14.4
North West	29.8	31.4	453	15.2
Western Cape	30.1	35.7	660	21.9
South Africa	30.3	32.2	483	15.9

(b) The LSR for ordinary public schools nationally was 483, with three provinces (Gauteng, Mpumalanga and the Western Cape) higher than the national average.

(c) The ESR for ordinary public schools nationally was 15.9, with four provinces (the Free State, Gauteng, Mpumalanga and the Western Cape) higher than the national average.

Figure 4: Frequency distribution of learners in ordinary public schools in 2010

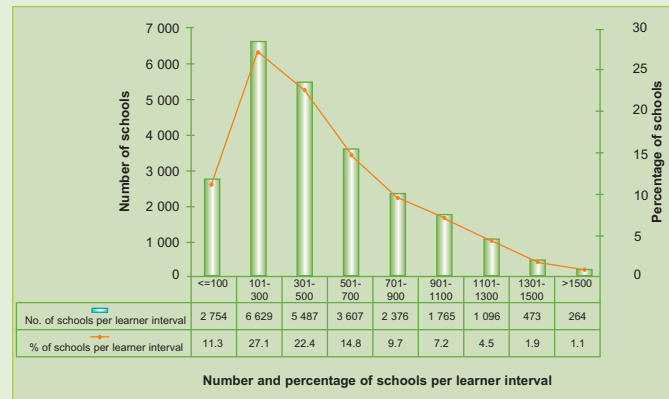


Figure 4, a histogram, shows that the highest number of ordinary public schools (6 629, or 27.1%) was in the 101 to 300 learner interval. Furthermore, there were 2 754 schools (11.3%) and 264 schools (1.1%) in, respectively, the 100 and below learner interval and the above 1 500 learner interval.

Figure 5: Frequency distribution of LER in ordinary public schools in 2010

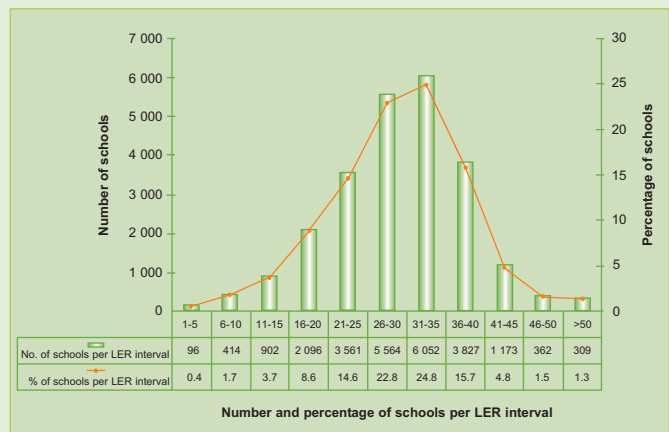


Figure 5, a histogram, reflects that the highest number of ordinary public schools (6 052, or 24.8%) was in the 31 to 35 LER interval. Furthermore, there were 96 schools (0.4%) and 309 schools (1.3%) in, respectively, the one to five LER interval and the above 50 LER interval.