



basic education

Department:
Basic Education
REPUBLIC OF SOUTH AFRICA

NASIONALE SENIOR SERTIFIKAAT

GRAAD 12

INGENIEURSGRAFIKA EN -ONTWERP V1

FEBRUARIE/MAART 2012

MEMORANDUM

PUNTE: 100

Hierdie memorandum bestaan uit 7 bladsye.

ANTWOORDE			
1	FONDASIE	6	10
	VOGWEERLAAG	9	
	GRONDVLAK	7	
	BINNEMUUR	1	
	BETONBLAD	3	
	GEKOMPakteerde HARDEPUIN	4	
	ONGESTEURDE AARDE	5	
	VLAKLAAG	2	
	PLEISTER	10	
	VOLTOOIDE VLOERVLAK	8	
2	Q1P1-SUP-2012	1	
3	ZAPPY DRUKKERS	1	
4	5 m of 5000 mm	1	
5	STRELITZIARYLAAN	1	
6	HOOGTE	1	
7	INHEEMSE BOME	1	
8	RYLAAN	1	
9	SEPTIESE TENK	1	
10	PARKERING	1	
11	6	1	
12	KEISTEEN	1	
13	469 m [berekening 1, antwoord 1, meter 1]	3	
14		3	
15	106 m ² [berekening 1, antwoord 1, meter ² 1]	3	

TOTAAL: 30

14

VRYHAND ✓

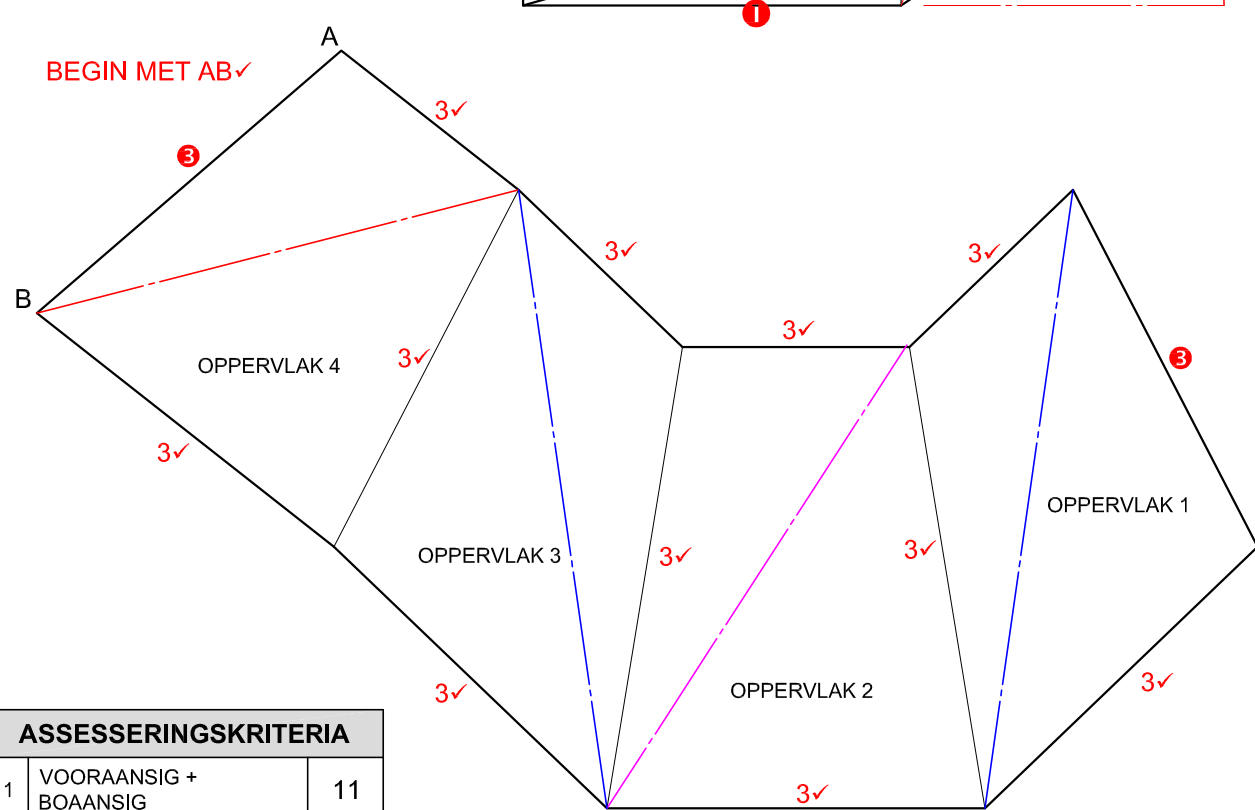
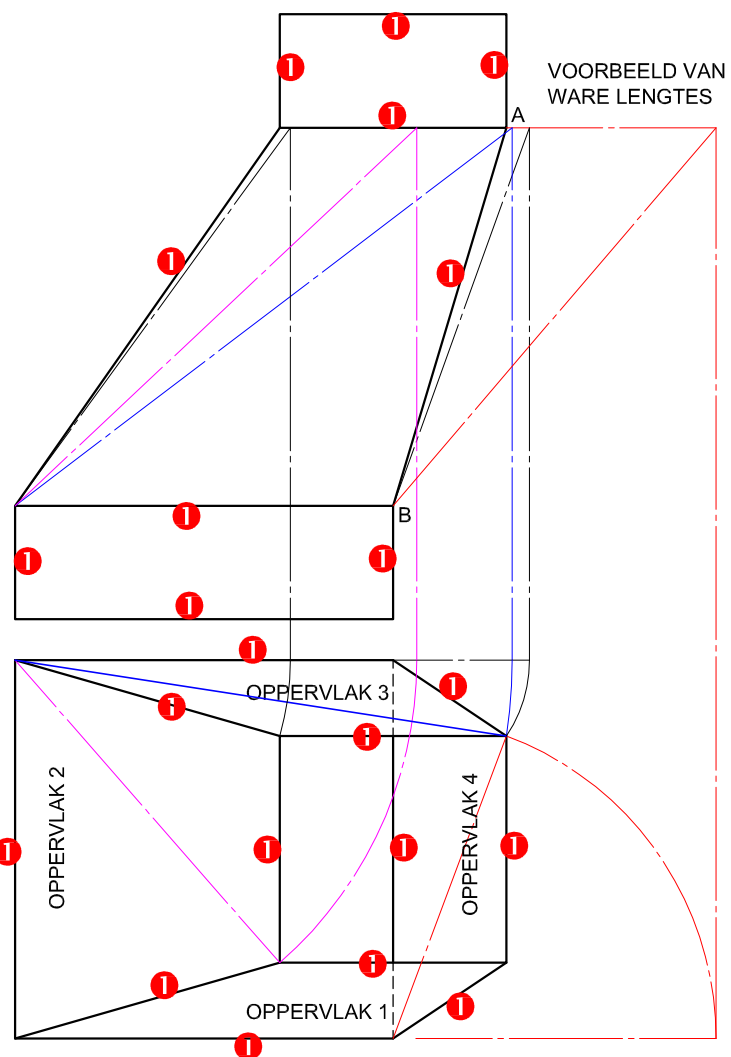
✓

✓

VRAESTEL 1 VRAAG 1
 GRAAD 12
 Feb.-Mrt. 2012
 MEMORANDUM

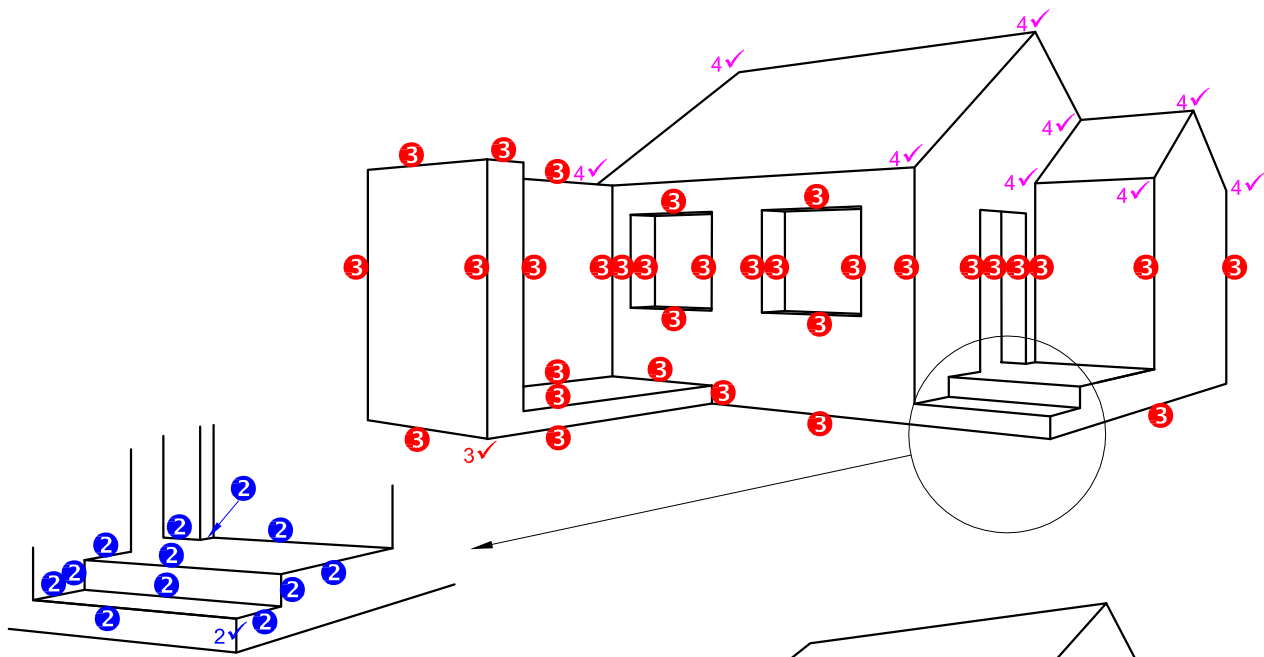
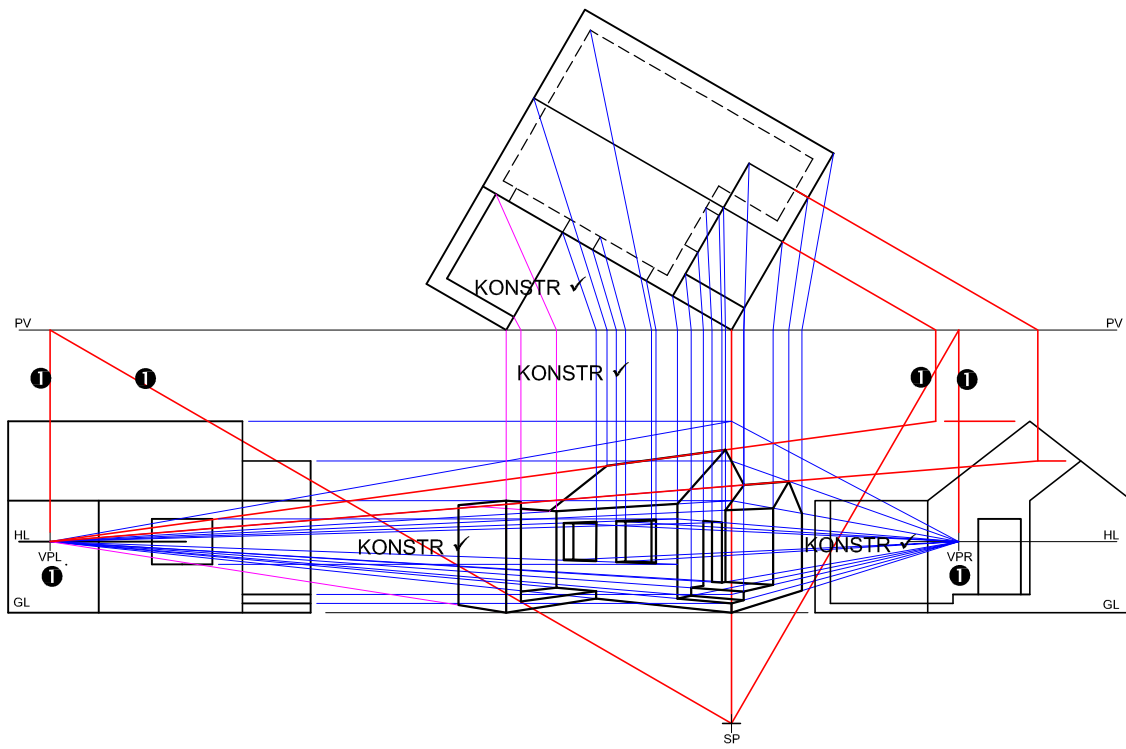
NOTA:
 ALLE ERKENDE METODEDES OM DIE WARE LENGTE TE BEPAAL WORD AANVAAR.

WARELENGTE-ASSESSERING
 5 x LYNE = 5
 5 x METODE = 5
 10

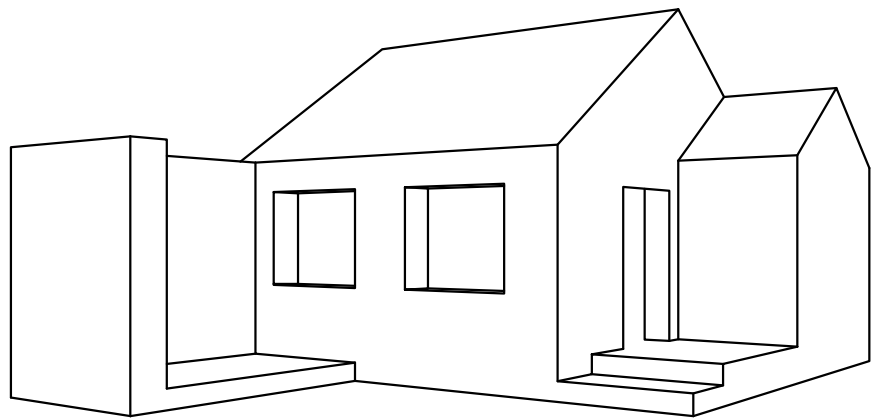


ASSESSERINGSKRITERIA		
1	VOORAANSIG + BOAANSIG	11
2	WARELENGTE-METODE	10
3	ONTWIKKELING	13
	TOTAAL	34

VRAESTEL 1 VRAAG 2
 GRAAD 12
 Feb.-Mrt. 2012
 MEMORANDUM

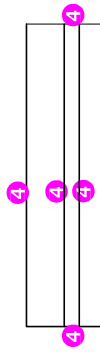
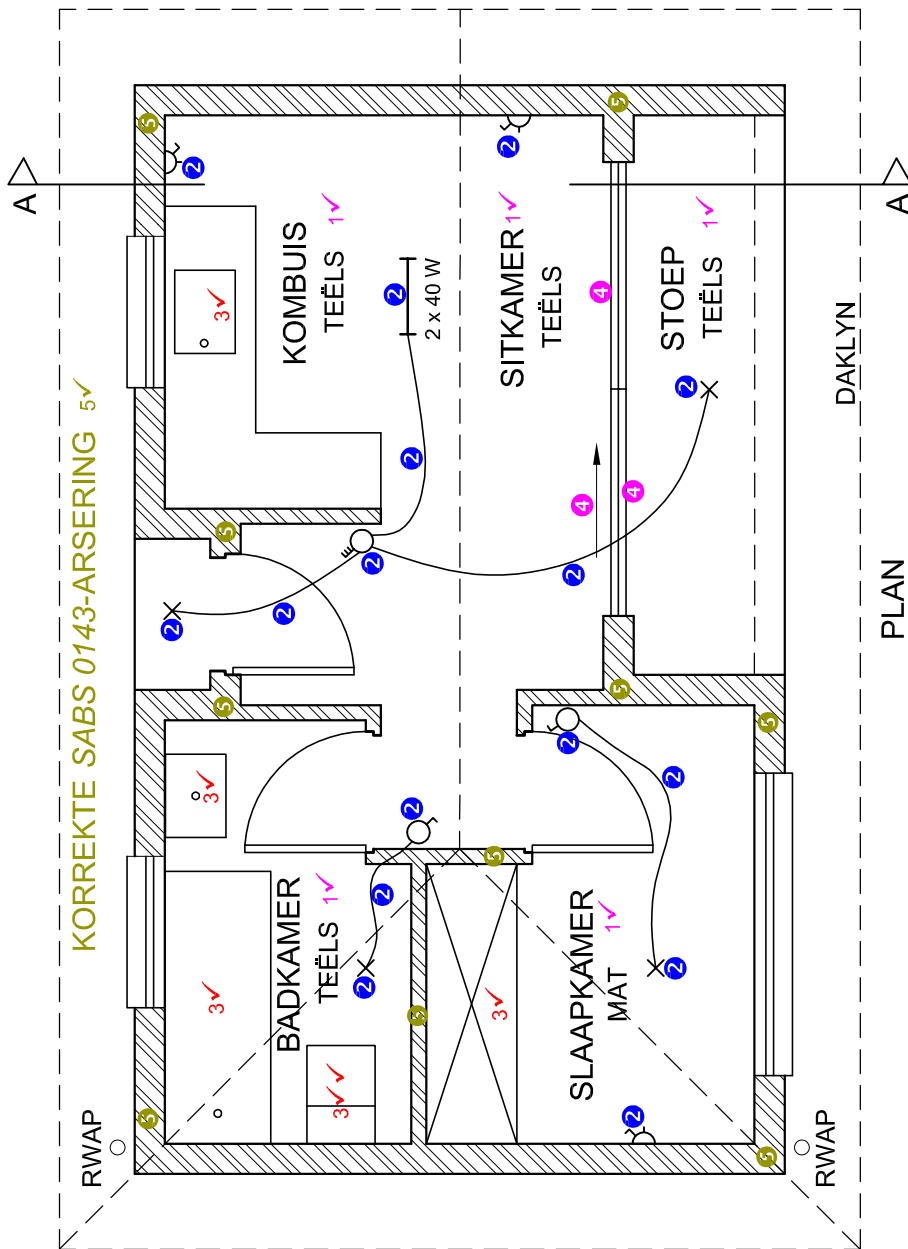


DETAIL VAN PUNTTOEKENNING VIR DIE TRAPPE

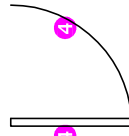


ASSESSERINGSKRITERIA	
KONSTRUKSIES + VP'e	7
TRAPPE	7
MURE + DEUR + VENSTERS	17
DAK	9
TOTAAL	40

VRAESTEL 1 VRAAG 3
 GRAAD 12
 Feb.-Mrt. 2012
 MEMORANDUM

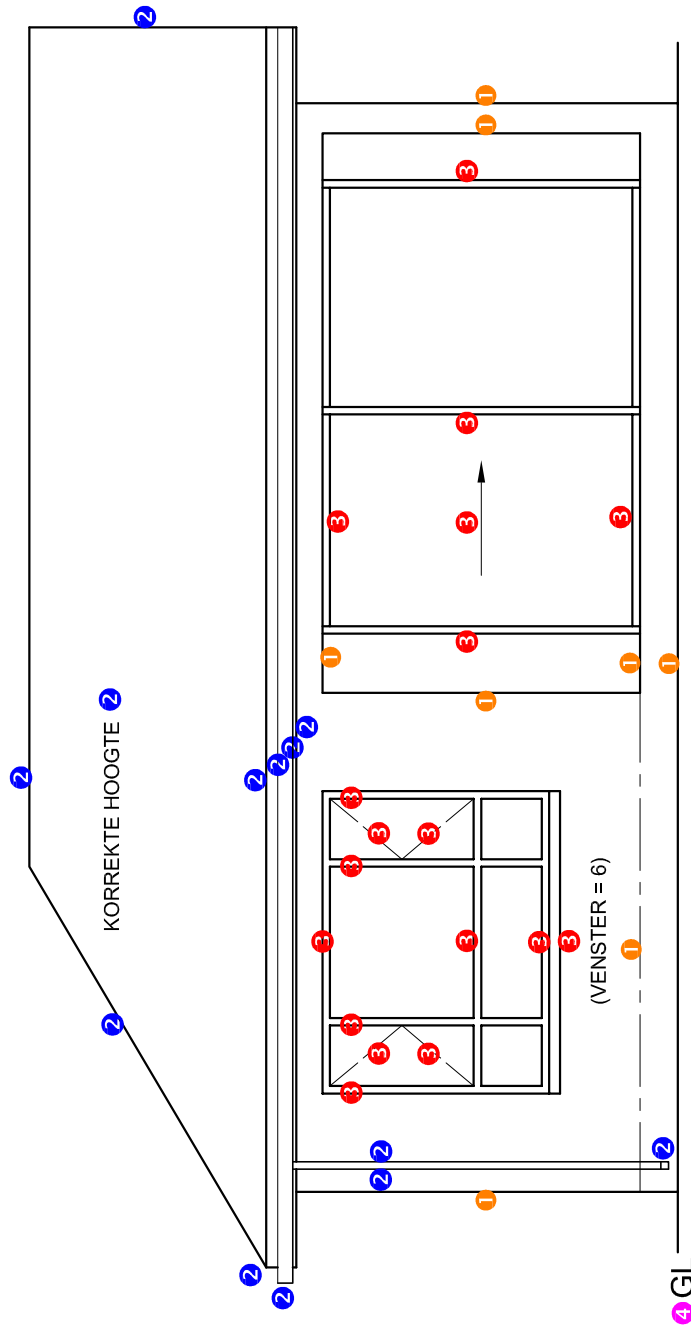


DETAIL VAN PUNTTOEKENING VIR 'N VENSTER (2½ x 3 vensters = 7½)



DETAIL VAN PUNTTOEKENING VIR 'N DEUR (1 x 3 deure = 3)

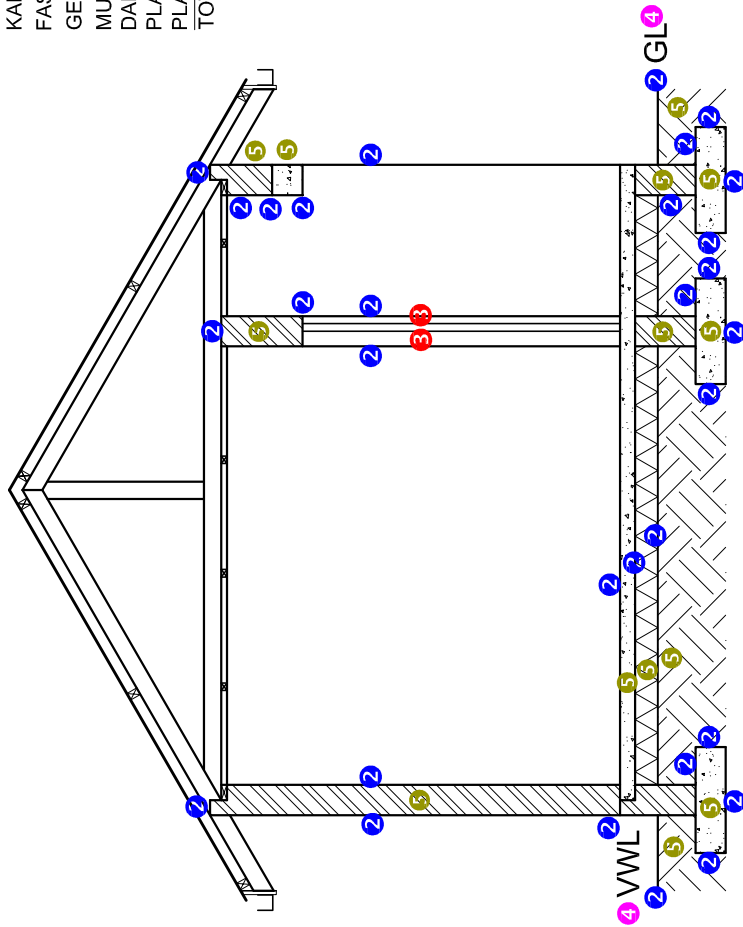
ASSESSERINGSKRITERIA		
VLOERPLAN		
1	BYSKRIFTE	5
2	ELEKTRIES	8
3	TOEBEHORE	6
4	DEURE + VENSTERS	12
5	ARSRERING	6
SUBTOTAAL		37



NOORD-OOS-AANSIG 4✓

ASSESSERINGSKRITERIA	
NOORD-OOS-AANSIG	
1	MURE + VVV 4
2	DAK + GEUT + RWAP 6½
3	VENSTERS + SKUIFDEUR 9
4	BYSKRIFTE 1½
SUBTOTAAL 21	

- PUNTTOEKENNING**
- KORREKTE HELLING 1
 - DAKPLAAT 1
 - KAPLATTE 2
 - FASSIEBORD (2 x ½) 1
 - GEUT (2 x ½) 1
 - MUURPLAAT (2 x ½) 1
 - DAKKAP 4
 - PLAFONLATTE 1
 - PLAFON 1
 - TOTAAL 13**



SNIT A-A 4

ASSESSERINGSKRITERIA	
DEURSNEEEAANSIG	
1	DAK 13
2	MURE + VLOER + FONDASIES 15½
3	SKUIFDEUR 1
4	BYSKRIFTE 1½
5	ARSERING 7
SUBTOTAAL 38	



basic education

Department:
Basic Education
REPUBLIC OF SOUTH AFRICA

**NATIONAL
SENIOR CERTIFICATE**

GRADE 12

ENGINEERING GRAPHICS AND DESIGN P1

FEBRUARY/MARCH 2012

MEMORANDUM

MARKS: 100

This memorandum consists of 7 pages.

ANSWERS			
1	FOUNDATION	6	10
	DAMP-PROOF COURSE	9	
	GROUND LEVEL	7	
	INTERNAL WALL	1	
	CONCRETE SLAB	3	
	COMPACTED HARDCORE	4	
	UNDISTURBED EARTH	5	
	SCREED	2	
	PLASTER	10	
	FINISHED FLOOR LEVEL	8	
2	Q1P1-SUP-2012		1
3	ZAPPY PRINTERS		1
4	5 m or 5000 mm		1
5	STRELITZIA ROAD		1
6	HEIGHT		1
7	INDIGENOUS TREES		1
8	ROAD/DRIVEWAY		1
9	SEPTIC TANK		1
10	PARKING		1
11	6		1
12	COBBLE STONES		1
13	469 m [calculation 1, answer 1, metres 1]		3
14			3
15	106 m ² [calculation 1, answer 1, metres ² 1]		3

TOTAL: 30

14

FREEHAND ✓

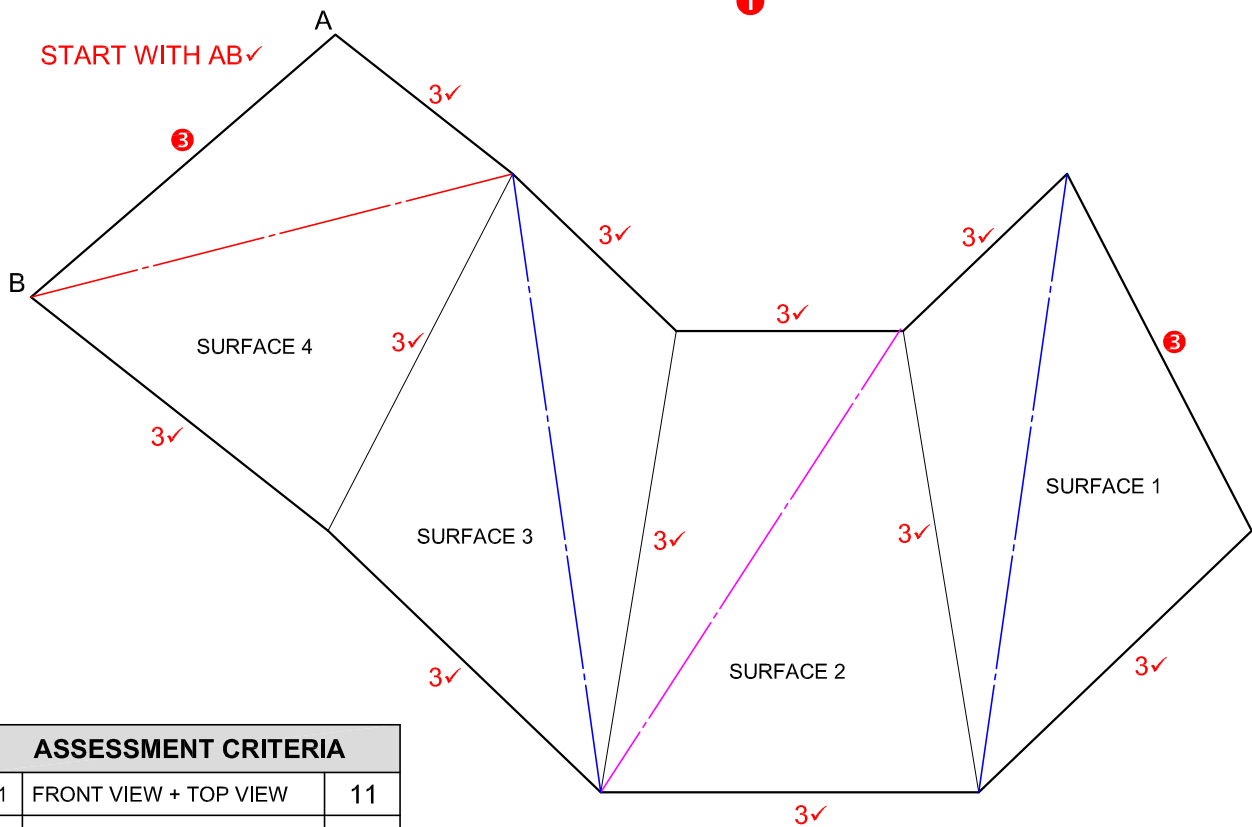
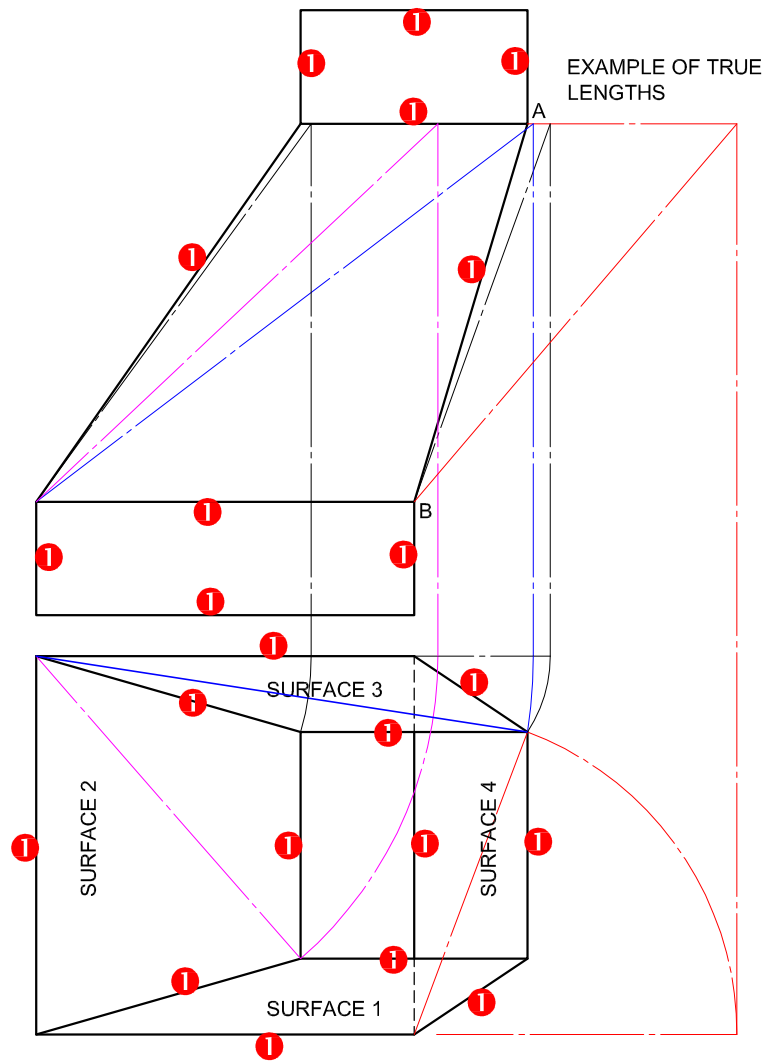
✓

○

✓

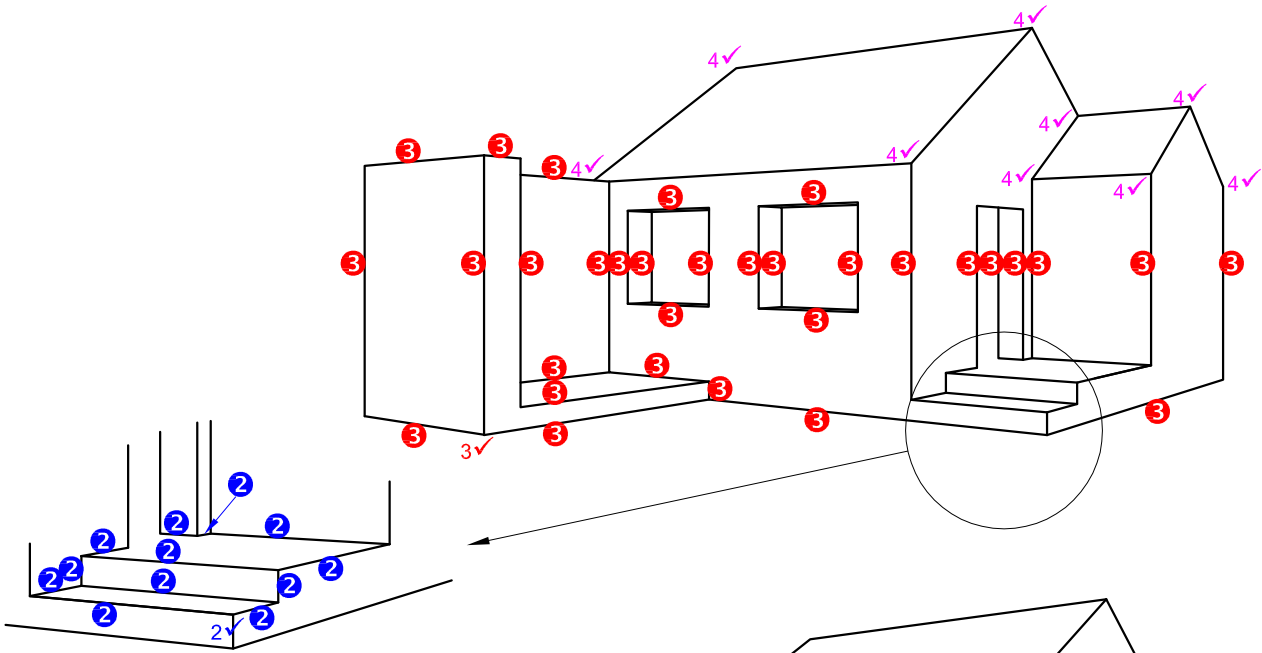
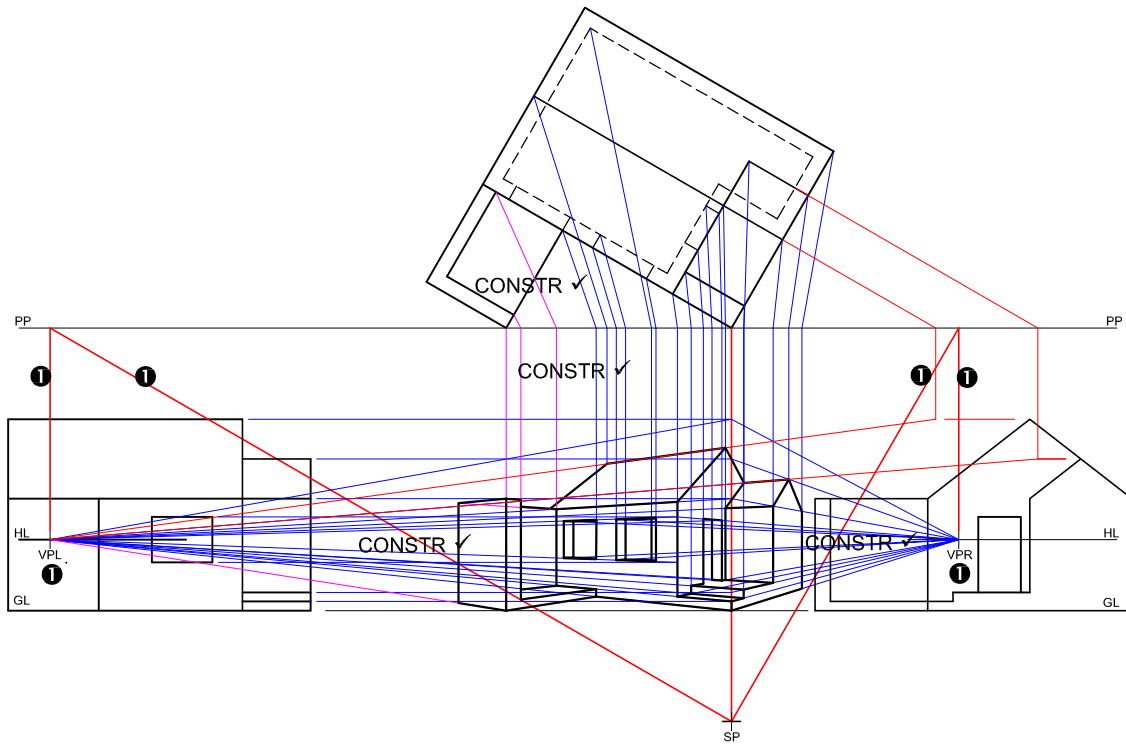
NOTE:
ALL RECOGNISED METHODS OF DETERMINING THE TRUE LENGTH ARE ACCEPTABLE.

TRUE LENGTH ASSESSMENT
5 x LINES = 5
5 x METHOD = 5
10

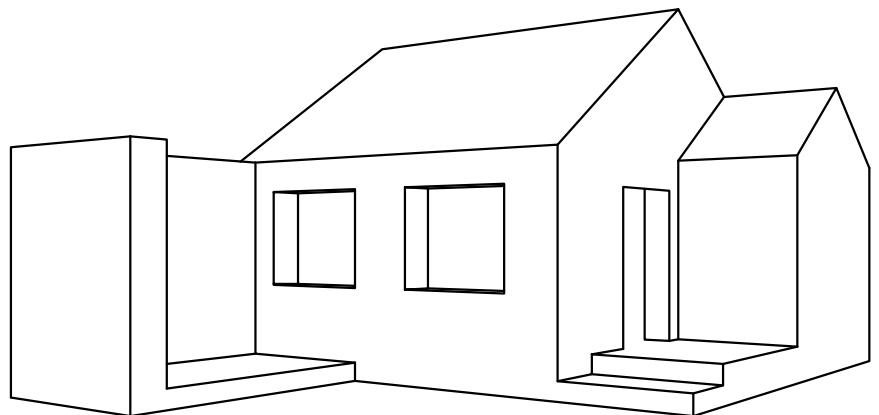


ASSESSMENT CRITERIA		
1	FRONT VIEW + TOP VIEW	11
2	TRUE LENGTH METHOD	10
3	DEVELOPMENT	13
	TOTAL	34

PAPER 1 QUESTION 2
GRADE 12
Feb.-Mar, 2012
MEMORANDUM

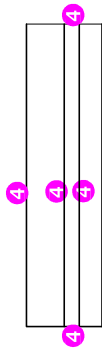
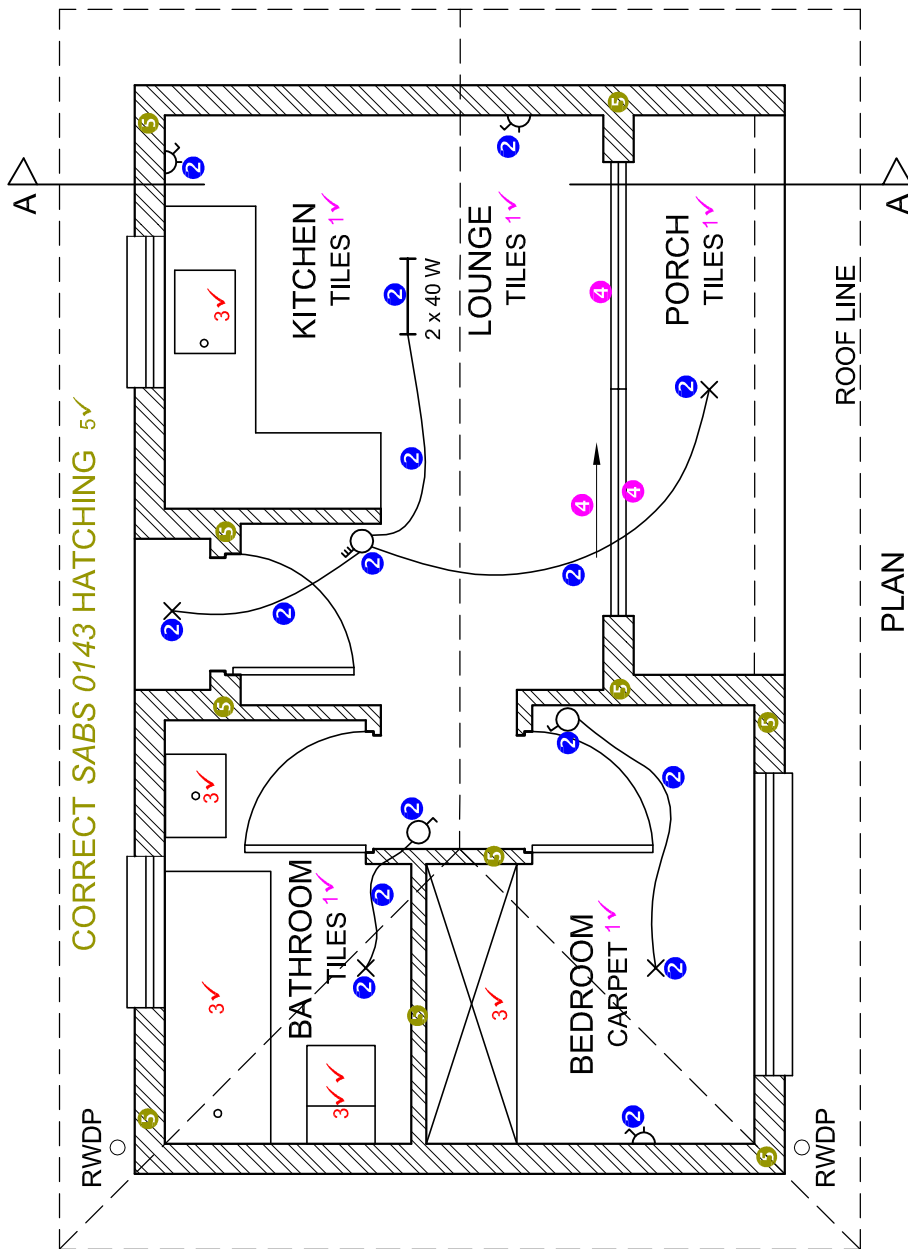


DETAIL OF MARK ALLOCATION FOR STAIRS

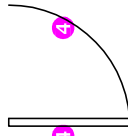


ASSESSMENT CRITERIA		
1	CONSTRUCTION + VPs	7
2	STAIRS	7
3	WALLS + DOOR + WINDOW	17
4	ROOF	9
	TOTAL	40

PAPER 1 QUESTION 3
 GRADE 12
 Feb.-Mar. 2012
 MEMORANDUM

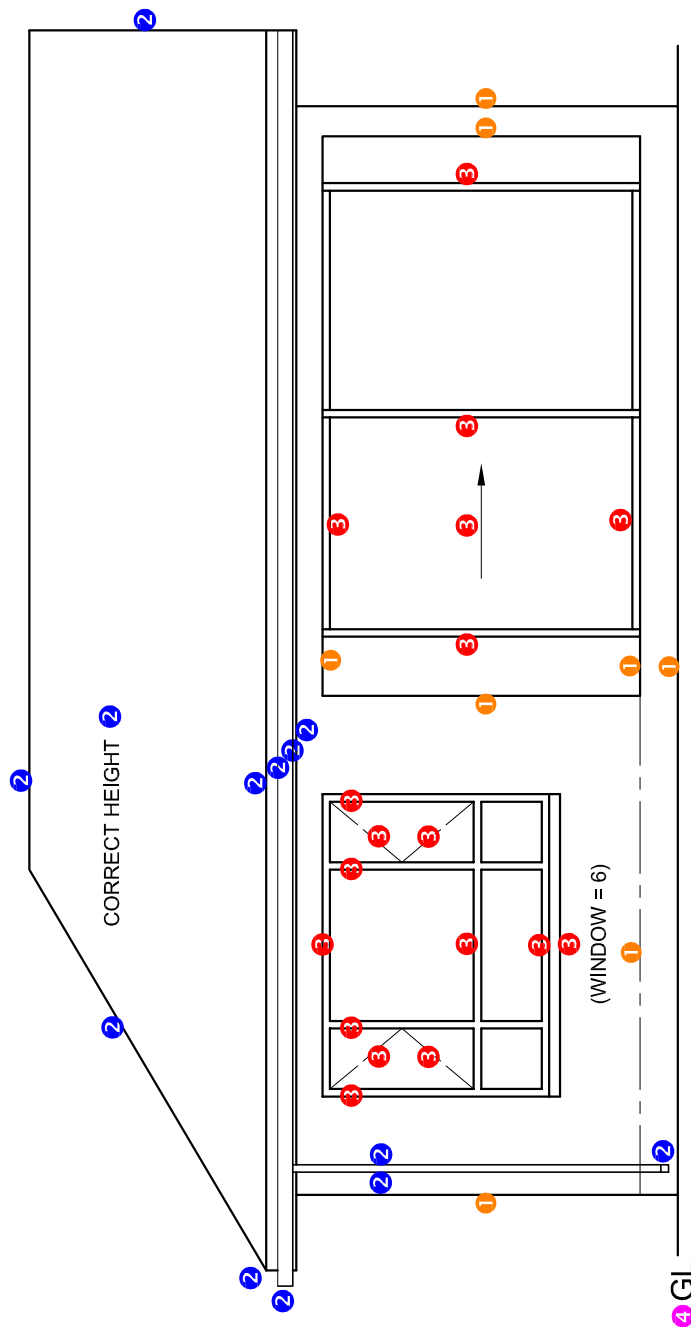


DETAIL OF MARK ALLOCATION FOR A WINDOW ($2\frac{1}{2} \times 3$ windows = 7½)



DETAIL OF MARK ALLOCATION FOR A DOOR (1 x 3 doors = 3)

ASSESSMENT CRITERIA		
FLOOR PLAN		
1	LABELS	5
2	ELECTRICAL	8
3	FITTINGS	6
4	DOORS + WINDOWS	12
5	HATCHING	6
SUBTOTAL		37

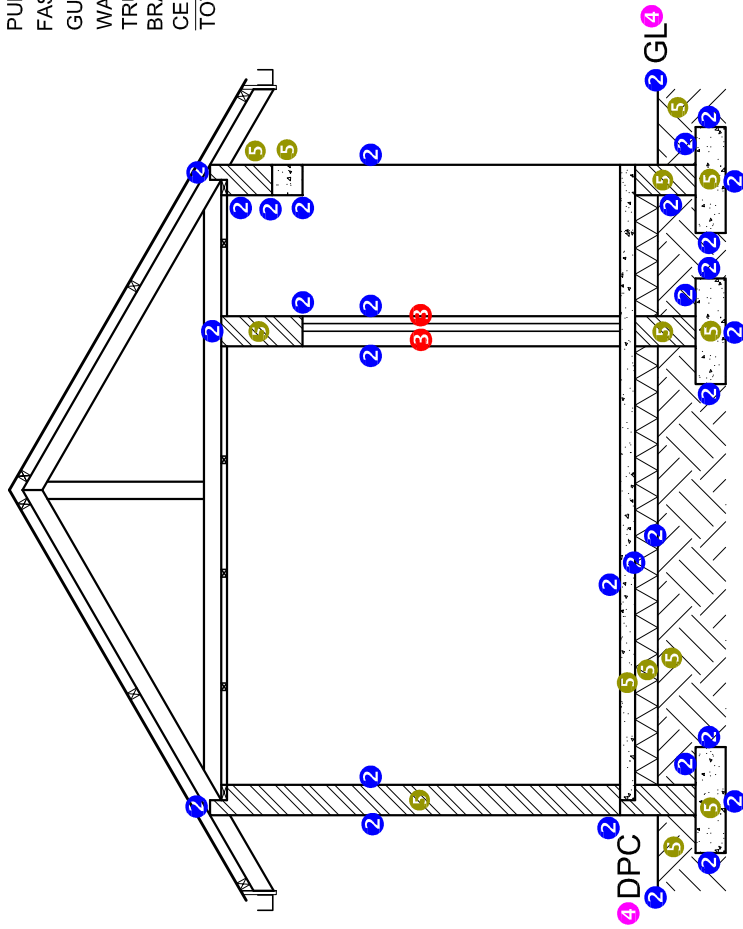


NORTH-EAST ELEVATION 4 ✓

ASSESSMENT CRITERIA		
NORTH-EAST ELEVATION		
1	WALLS + FFL	4
2	ROOF + GUTTER + RWDP	6½
3	WINDOWS + SLIDING DOOR	9
4	LABELS	1½
SUBTOTAL		21

MARK ALLOCATION

CORRECT ANGLE	1
ROOF SHEET	1
PURLINS	2
FASCIA BOARD (2 x ½)	1
GUTTER (2 x ½)	1
WALL PLATE (2 x ½)	1
TRUSS	4
BRANDERING	1
CEILING	1
TOTAL	13



SECTIONAL A-A 4

ASSESSMENT CRITERIA		
SECTIONAL ELEVATION		
1	ROOF	13
2	WALLS + FLOOR + FOUNDATIONS	15½
3	SLIDING DOOR	1
4	LABELS	1½
5	HATCHING	7
SUBTOTAL		38