



basic education

Department:
Basic Education
REPUBLIC OF SOUTH AFRICA

CONSUMER STUDIES (PRODUCTION OF CLOTHING ARTICLES)

GUIDELINES FOR PRACTICAL ASSESSMENT TASKS

GRADE 12

2025

These guidelines consist of 21 pages.

TABLE OF CONTENTS

	Page
1. INTRODUCTION	3
2. MARK ALLOCATION	3
3. REQUIREMENTS FOR THE PRACTICAL EXAMINATION	4
4. REQUIRED TIME FRAME	4
5. SETTING THE PRACTICAL EXAMINATION	4
6. PREPARING FOR THE PRACTICAL EXAMINATION	5
7. PERFORMING THE PRACTICAL EXAMINATION	5
7.1 The layout and cutting session	5
7.2 Practical examination in Term 3	6
8. EVALUATION	6
9. MODERATION OF THE PRACTICAL EXAMINATION	6
9.1 BEFORE the practical examination	6
9.2 ON THE DAY of the practical examination	7
10. SKILLS-CODE WEIGHTING OF TECHNIQUES USED IN CLOTHING PRODUCTION	8
11. TEMPLATES: TEACHER PLANNING	10
12. ASSESSMENT TOOL	14
13. EXAMPLE OF CLOTHING ARTICLES FOR THE PRACTICAL ASSESSMENT TASK	16
14. CONCLUSION	21

THE PRACTICAL ASSESSMENT TASK FOR CONSUMER STUDIES PRODUCTION OF CLOTHING ARTICLES

1. INTRODUCTION

The 18 Curriculum and Assessment Policy Statement subjects which consist of practical components all include a practical assessment task (PAT). These subjects are:

- **AGRICULTURE:** Agricultural Management Practices, Agricultural Technology
- **ARTS:** Dance Studies, Design, Dramatic Arts, Music, Visual Arts
- **SCIENCES:** Computer Applications Technology, Information Technology; Technical Sciences; Technical Mathematics
- **SERVICES:** Consumer Studies, Hospitality Studies, Tourism
- **TECHNOLOGY:** Civil Technology, Electrical Technology, Mechanical Technology and Engineering Graphics and Design

A practical assessment task (PAT) mark is a compulsory component of the final promotion mark for all candidates offering subjects that have a practical component and counts 25% (100 marks) of the end-of-the-year examination mark. The PAT is conducted up to the end of September. The PAT allows for learners to be assessed on the skills they have acquired during the weekly practical lessons and the practical examinations in Grades 10 to 12. It also allows for the assessment of skills that cannot be assessed in a written format, e.g. tests or examinations. It is therefore important that schools ensure that all learners complete the practical assessment task within the stipulated period to ensure that learners are resulted at the end of the school year. The planning and execution of the PAT differs from subject to subject.

- During the practical assessment task, the learner must demonstrate his/her knowledge and practical ability/skills to produce quality articles focusing on workmanship and suitability for selling.
- The practical assessment task for Consumer Studies Grade 12, with the Clothing practical option, consists of a layout and cutting session and a practical examination of FOUR hours.
- Breakdown of FOUR hours:
 - Layout and cutting session: ONE-HOUR session (prior to the practical examination)
 - THREE hours to produce the product
- Learners will perform the practical examination for the PAT individually.
- The practical examination for the PAT takes place in Term 3.

2. MARK ALLOCATION

- The total mark allocation of the PAT is 100 marks.
- The marks for the PAT form part of the end-of-the-year assessment in Term 4.
- The province will provide two separate computerised mark sheets: one for SBA and one for the PAT.
- The mark allocation is indicated as follows:

Layout and cut-out session	6
Practical examination	94
Final mark for PAT	100

3. REQUIREMENTS FOR THE PRACTICAL EXAMINATION

Consumer Studies is an elective subject with five practical options. If the school chooses to offer Consumer Studies as a subject and selects the Clothing practical option, the equipment and funds necessary to conduct the PAT, as well as the specified number of weekly practical lessons are the responsibility of the school **as specified in the CAPS document on page 10**.

The school has the responsibility to ensure the availability of the following for the PAT examination:

- A suitable classroom with the necessary equipment: large tables for cutting out; a minimum of 12 sewing machines; two overlockers; two or more ironing boards and irons; cutting-out scissors (one for each learner); electricity and equipment for sewing and making garments.
- A minimum of R80 to a maximum of R150 per learner is required for the practical examination to make the prescribed article, besides the funding required for the SBA weekly practical lessons.
- The number of learners per session must correlate and align to the number of sewing machines that are available.
- Divide the learners into groups of a maximum of 12 learners. Twenty-four learners (two groups of 12 learners each) can perform the examination on the same day, e.g. from 08:00 to 11:00 and from 12:30 to 15:30.
- The teacher needs time between the two sessions to prepare the classroom for the following group.
- Schools with large numbers of learners will need more than one day to complete this practical examination.

4. REQUIRED TIME FRAME

- Layout and cutting are done beforehand in a ONE-HOUR session under examination conditions, prior to the practical examination.
- A time frame of THREE hours in total is required for conducting the practical examination.

5. SETTING THE PRACTICAL EXAMINATION

- The examination will take place on a date agreed upon with the moderator.
- The production process, workmanship and saleability of the articles are important aspects of the practical examination.
- The teacher must buy a commercial pattern for a product that can be completed in THREE hours.
- Learners should be able to demonstrate the advanced techniques identified for Grade 12.
- The selected article should have a skills-code weighting of 50 points.
- Learners must complete the ONE-hour layout and cutting session under examination conditions prior to the practical examination.
- The learners will be assessed on the production process, workmanship and saleability of the product.
- At the end of the THREE hours, learners should hand in their articles and packaging for final assessment.
- After the assessment has been completed, the articles must be returned to learners for correction and finishing off, if necessary.
- The products will NOT be remarked after the corrections have been made.

NOTE: Learners must prepare a label and packaging suitable for their final product. These must be completed before they perform the practical examination and must be available for assessment on the day of the practical examination.

6. PREPARING FOR THE PRACTICAL EXAMINATION

The teacher is responsible for the following:

- Set the dates for the practical examination. Communicate these dates to the SMT of the school to ensure that these dates do not clash with other school activities.
- All the equipment must be in working order and the sewing machines must be serviced and repaired before the start of the practical examination.
- Copy the pattern, illustration(s) and instruction sheet for each learner or buy a commercial pattern for each learner. It is **COMPULSORY** for each learner to work from an instruction sheet.
- Divide learners into groups according to the number of sewing machines that are available.
- Prepare the assessment tool provided with the learners' names.
- Prepare name tags for the last group of learners to assist the moderator with the identification of candidates.
- Learners must receive the instructions **ONE WEEK (7 days)** prior to the layout and cutting session so that they can prepare.
- Purchase the fabric and haberdashery; cut the fabric to the required size for each learner.
- Make up a 'kit' for each learner to include the following:
 - Fabric in the required size
 - The pattern and instruction sheet
 - The necessary haberdashery, such as a zip, buttons and pins
- Thread all the sewing machines with the appropriate colour thread and test the tension beforehand.
- Prepare the classroom and ensure the availability of the following:
 - Electrical power points and extension cords for all irons and sewing machines
 - Irons and ironing boards
 - Large tables for the layout and cutting out of pattern pieces
 - Enough small equipment, such as scissors, needles, quick-unpicks, pins, thread, bobbins, extra sewing machine needles and sharp scissors

7. PERFORMING THE PRACTICAL EXAMINATION

7.1 The layout and cutting session: **ONE hour prior to the practical examination**

- Ensure that learners wash their hands and sign the attendance register.
- Hand out each learner's 'kit' with the fabric, pattern, instruction sheet and haberdashery, such as the zip.
- The teacher is **NOT** allowed to assist the learners in any way during the layout and cutting session.
- During the layout and cutting session the teacher must allocate marks.
- Learners may improve/correct the cut-out pattern pieces or cut out new pieces **AFTER** the cutting session is over and marks have been allocated, but this will **NOT** be remarked.
- The teacher then keeps all the learners' pattern pieces in a safe place until the day of the practical examination.

7.2 Practical examination in Term 3: THREE hours

- When learners enter the classroom, they sign the attendance register and the teacher hands out the Clothing 'kits' to each learner as well as extra scraps of fabric (to test the sewing machine, should they wish to).
- Enough scissors, pins and needles should be available. **Avoid the sharing of equipment.**
- The sewing machines must be ready at the tables.
- Learners perform the practical examination individually under the supervision of the teacher.
- Only the teacher, the moderator and the learners may be in the room during the practical examination.
- The teacher must invigilate and assess the learners while they are performing the practical examination; NO other work may be done during this time.
- NO learner may be assisted in any way.
- The product should be ready for assessment after THREE hours.
- Learners will lose **2 marks for every 5 minutes late** up to a maximum of 20 marks.
- The teacher must mark the product that was made during the practical examination and record the marks.
- After the product has been marked, the learners may correct mistakes, make improvements and complete the product.
- The products will NOT be remarked after the corrections have been made.
- After the corrections have been made, the articles, labels and packaging are handed in and kept in a safe place until the day of moderation.
- The teacher must complete the assessment tool.

8. EVALUATION

- The teacher and the external moderator have 45 minutes, or more, if necessary, to evaluate the final articles, inspect the learners' workstations and complete the assessment tool.
- While their products are being evaluated, the learners should tidy and clean their workstations and equipment.
- At the end of the practical examination, the teacher/moderator must inspect the workstations for the final allocation of marks.

9. MODERATION OF THE PRACTICAL EXAMINATION

9.1 BEFORE the practical examination:

The teacher must submit the following to the subject advisor for approval by the **end of March or earlier** to ensure that the practical examination is of an appropriate standard:

- The proposed date for external on-site moderation of preferably the last group of learners
- The techniques and skills-code weighting for the selected product
- A photocopy of the pattern envelope
- An instruction sheet
- An illustration of the product
- The list of fabrics, haberdashery, etc. to be purchased
- The completed checklist, checked and signed by the principal

The PAT cannot be done unless it has been approved by the subject advisor.

9.2 ON THE DAY of the practical examination:

- The teacher must have the following available for the moderator on the day of moderation:
 - All the products that learners made during the weekly practical lessons for SBA (if not moderated during SBA moderation)
 - A copy of the completed mark sheet for weekly practical lessons
 - The completed products (marked) of all the learners who have already completed the practical examination
 - The marks of all learners who have already completed the practical examination
 - A separate set of assessment tools for the moderator to use, with the names of the learners already written on the assessment tool
- On completion of the assessment and consolidation of marks, the moderator will compare his/her assessment with the assessment of the teacher. If the moderator finds that the marks of the teacher differ more than 10% from his/her marks, a block adjustment upwards or downwards should be made based on the difference.

The table below illustrates how to determine the difference between the moderator's marks and teacher's marks to establish whether adjustment is needed and also the margin of adjustment required.

Learners' Names		PAT	
		100	
		*T	*M
Learner A		84	69
Learner B		83	70
Learner C		68	53
Learner D		59	44
Learner E		49	40
Learner F		45	40
TOTAL		388	316
AVERAGE MARK = TOTAL ÷ 6 (number of learners)		66	53
DIFFERENCE = 66 (*T) – 53 (*M)		13	
ADJUSTMENT	DOWNWARDS	✓	UPWARDS
		– 3	

***T = Teacher; *M = Moderator**

- A block adjustment can also be made based on the professional judgement of the moderator, if the practical examination of the school is not of the expected standard.
- The moderator will discuss the outcome and any adjustments with the teacher.
- The final moderated marks should be entered on the computerised mark sheet.
- The marks of all learners will be affected if an adjustment is made.

10. SKILLS-CODE WEIGHTING OF TECHNIQUES USED IN CLOTHING PRODUCTION

- Use the following skills-code weighting to choose a pattern for the PAT as well as for the weekly practical lessons.
- The skill code indicates the weighting for the techniques and NOT the mark allocation.
- The weighting for a specific technique should only be allocated ONCE.
- The teacher could add a technique not listed below, after discussing it with the subject advisor. The teacher and subject advisor should then decide on the weighting for the new technique.
- A weighting is allocated according to the degree of difficulty of the technique.
- The total weighting of the techniques in the pattern chosen for the practical examination in Grade 12 should add up to a minimum of 50 points.

Layout and cut from commercial pattern <ul style="list-style-type: none"> • Fabric folded correctly • Pattern placed on straight grain of fabric • All relevant pattern pieces placed on fold • Pattern pieces placed economically • Pattern pieces pinned correctly onto fabric • Straight cutting on cutting lines • Notches cut accurately • Pattern markings • Follow pattern instructions 	15	Zip <ul style="list-style-type: none"> • Seam allowance correct and even width • Seam finish • Insert zip: stitching straight • Corners at bottom of zip neat and square • Corners at top of zip neat and square 	15
Layout and cutting from measurements, no pattern <ul style="list-style-type: none"> • Fabric folded correctly • Measurements marked on fabric accurately • Straight grain of fabric used correctly • Straight cutting • Correct number of pieces 	15	Make and attach collar <ul style="list-style-type: none"> • Preparing the collar before stitching (stay-stitch and baste parts together) • Collar edge smoothly stitched, thus smooth curve and/or sharp corners • Both sides alike • Seam allowance inside collar graded and notched correctly • Edge of collar under-stitched, basted and ironed • Attach collar to garment: fits properly • Seam smoothly stitched, graded, seam finish 	20
Darts <ul style="list-style-type: none"> • Stitch from wide to narrow • Straight stitching • Press downwards or towards the middle • Knot threads at narrow point and insert thread into the dart 	10	Shaped facing (for openings such as armhole or neckline) <ul style="list-style-type: none"> • Prepare facing and baste to opening • Attach facing • Facing lies flat and fits neatly into opening • Seam allowance graded inside, under-stitching • Facing even width • Finishing off of facing edges • Facing attached to shoulder/side seams 	20
Tacks/Top stitching <ul style="list-style-type: none"> • Marking transferred correctly • Evenly spaced • Straight sewing • Suited to item/material 	10		
Open or closed straight seams with a finish <ul style="list-style-type: none"> • Straight stitching/smooth curve/square corner • Seam allowance correct and even width • Seam finish 	10	Front opening and neck band <ul style="list-style-type: none"> • Reinforced • Bands even width • Neck band fits properly • Firmly stitched 	10
Fasteners: loop and hook/buttons/press studs <ul style="list-style-type: none"> • Spacing • Suitable for garment • Correctly and firmly stitched 	5	Stitched-on pocket <ul style="list-style-type: none"> • Pocket shape, size, hem width • Correct position on garment • Stitching to attach pocket to item 	10

NSC (Production of Clothing Articles)

Buttonholes <ul style="list-style-type: none"> • Buttonholes: even size (hand/machine) • Spacing • Appearance • Correctly stitched and opened 	10 3 2 2 3	Pleats <ul style="list-style-type: none"> • Pattern marking transferred correctly • Evenly spaced • Even width • Suitable for fabric/pattern • Pleats folded on grain of fabric 	15 3 3 3 3 3
Make and attach sleeves <ul style="list-style-type: none"> • Easing or gathers (3 rows) around top edge • Sleeves fit neatly into armhole • All seams and seam finishing neat • Sleeve hem 	15 3 5 4 3	Hems <ul style="list-style-type: none"> • Even and correct width all around • Lies flat, no pleats/gathers on the right side • Neat, straight stitching/neatly sewn by hand • Correct stitch length/correct hand stitch 	10 3 2 3 2
Attaching raglan sleeves <ul style="list-style-type: none"> • Stitching straight • Seam allowance correct and even width • All seams and seam finishing neat • Sleeve hem 	10 2 3 2 3	Narrow single hems <ul style="list-style-type: none"> • Even and correct width • Neatly over-locked • Folded over evenly • Neatly stitched 	8 2 2 2 2
Crossway binding <ul style="list-style-type: none"> • Cutting bias strips • Join bias strips • Attach binding for edge finishing • Correct and even width • Lies flat and even • Machine/Hand-stitched 	20 5 5 3 3 2 2		

11. TEMPLATES: TEACHER PLANNING

TEACHER PLANNING: GRADE 12 PRACTICAL EXAMINATION

*(To be submitted to the subject advisor for moderation at the **end of March or earlier.**)*

Name of school:
Name of teacher:
Date(s) and time(s) of practical examination sessions:

TEST FOR PAT GRADE 12

(Attach copies of patterns and instruction sheets)

LAYOUT AND CUTTING	
TECHNIQUES	WEIGHTING
TOTAL	

PRACTICAL EXAMINATION	
TECHNIQUES	WEIGHTING
TOTAL	

EXEMPLAR OF TEACHER PLANNING FOR PURCHASES*(To be submitted to the subject advisor for moderation at the **end of March or earlier.**)*

Total number of learners	Groups	Number of learners per group	Dates	Time
25	1	13	10/09/2025	08:00–11:00
	2	12	10/09/2025	12:30–15:30

Requirements	Quantity required per learner	Number of learners	Total
Poly cotton	1 m	25	25 metres
Sewing thread	1 reel		25 reels
Pattern	1		25 patterns
Vilene	0,5 m		12,5 metres
Thread for basting	1		25 reels
Zip	1		25 zips

TEACHER'S SHOPPING LIST

Requirements	Amount
Poly cotton	25 metres
Sewing thread	25 reels
Pattern	25 patterns
Vilene (interfacing)	12,5 metres
Thread for basting	25 reels
Zip	25 zips

**CONSUMER STUDIES
PRACTICAL ASSESSMENT TASK
CLOTHING PRODUCTION
CHECKLIST FOR PLANNING (TO BE HANDED IN FOR MODERATION)**

SCHOOL		
TEACHER		
PRINCIPAL		
DATE SUBMITTED		
Dates of all PAT sessions	Proposed moderation date	Approved moderation date

CRITERIA	YES/NO	COMMENTS BY MODERATOR
An illustration of the product/ photocopy of the pattern envelope		
Copy of the pattern instruction sheet to be provided to learners		
Completed list of techniques and skills-code weighting of the product		
Planning for purchases		

APPROVED/NOT APPROVED

RESUBMISSION DATE: _____

Signatures:

TEACHER: _____ **DATE:** _____

PRINCIPAL: _____ **DATE:** _____

MODERATOR: _____ **DATE:** _____

12. ASSESSMENT TOOL

ASSESSMENT TOOL FOR CLOTHING PRACTICAL ASSESSMENT TASK

NAME OF SCHOOL _____ DATE _____ TEACHER _____ MODERATOR _____			NAMES AND SURNAMES OF LEARNERS:							
1.	PRACTICAL SKILLS AND TECHNIQUES									
1.1	Interpretation of the pattern	4								
	Follow pattern instructions accurately	2								
	Understand terminology and symbols for implementation	2								
1.2	Accurate implementation of techniques	20								
	Correct technique for laying and cutting out	6								
	Correct techniques applied to produce the article: (From the list below, assess the techniques that apply to the product) Darts/Tacks/Top stitching/Seams/Fasteners/ Buttonholes/Sleeves/Crossway binding/Zip/Collar/ Shaped facing/Front opening and neck band/ Stitched-on pocket/Pleats/Hems	14								
1.3	Correct handling of equipment	8								
	Correct handling of small equipment, e.g. tape measure, scissors, needles	3								
	Correct handling of large equipment, e.g. sewing machine, overlocker	2								
	Safe use of equipment, e.g. thread cutter/scissors/pins/iron/sewing needle	3								
1.4	Efficient production of the article	8								
	Regular quality control checkpoints done (during laying and cutting out and production)	2								
	Economic use of supplies, no wastage of fabric and haberdashery	2								
	Works independently, silently, not distracting others, without asking any questions	2								
	Efficient use and management of time	2								
2.	HYGIENE AND NEATNESS									
2.1	Workstation & equipment during practical examination	8								
	Workstation neat and well organised	3								
	Small equipment not laying around	2								
	Works hygienically	3								
2.2	Personal appearance	2								
	Appropriately dressed (school uniform)	1								
	Nails clean and short	1								
2.3	Neatness of workstation after practical examination	4								
	Workstation clean	1								
	Equipment cleaned & packed away in correct storage space	2								
	Waste removed, bins clean	1								

ASSESSMENT TOOL FOR CLOTHING PRACTICAL ASSESSMENT TASK (continued)

			NAMES AND SURNAMES OF LEARNERS:							
3.	SUITABILITY FOR SELLING									
3.1	Packaging	4								
	Protecting the product	1								
	Suitable for the product	1								
	Cost-effective	1								
	Consumer appeal	1								
3.2	Label	6								
	Fibre content/type of fabric used	1								
	Shows creativity	2								
	Manufacturer's name/physical address/contact details	1								
	Size/Price	1								
	Care instructions	1								
3.3	Products created adhere to specifications	36								
	Suitable choice of colours for article	2								
	Correct size of article according to pattern	2								
	Clean product	2								
	Ends/Threads neatly trimmed	2								
	Neatly ironed/pressed	2								
	Seams neatly and correctly joined	2								
	Seams are neatly sewn and finished off	3								
	Secure stitching	2								
	No flaws (e.g. no holes) in the construction of the product	2								
	Correct application of techniques used in the construction of the article	5								
	Correct and even tension throughout	2								
	Suitability for selling (Use the scale below)	10								
	TOTAL	100								
	Late penalties: Subtract 2 marks for every 5 minutes late up to a maximum of 20 marks.									
	TOTAL	100								

SUITABILITY FOR SELLING:

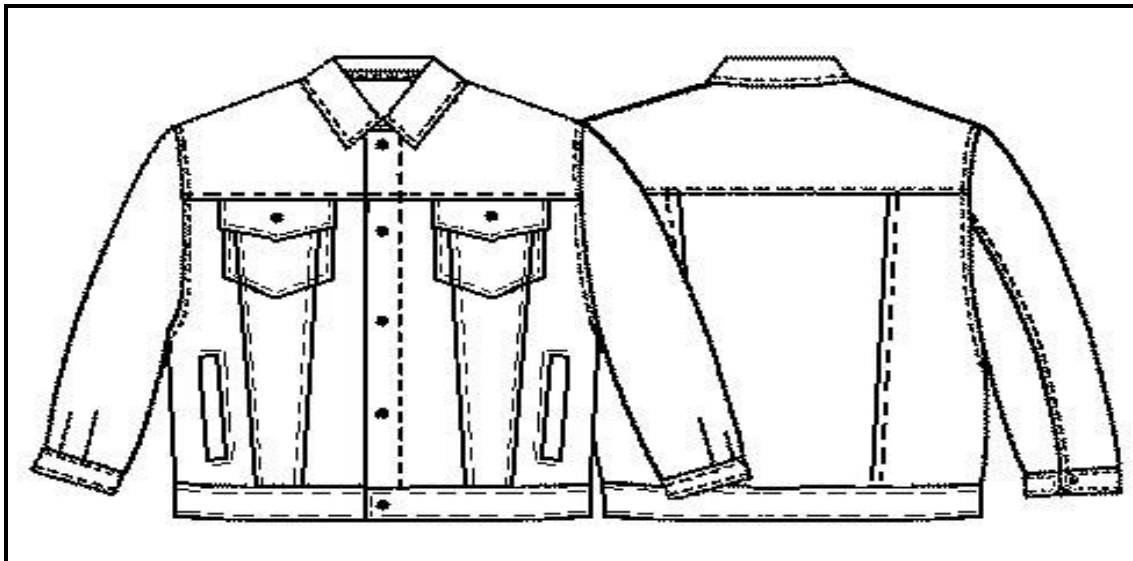
- 0-2 Unacceptable, does not meet the requirements, cannot sell
- 3-4 Poor, meets some requirements, will not sell
- 5-6 Average, meets most requirements, should sell
- 7-8 Good, meets all requirements, should sell well
- 9-10 Excellent, exceeds all requirements, will sell very well

13. **EXAMPLE OF CLOTHING ARTICLE FOR THE PRACTICAL ASSESSMENT TASK**

UNISEX DENIM JACKET



TECHNICAL DRAWING:



WEIGHTING: Select techniques to a weighting value of 50 skills-code points.

LAYOUT AND CUTTING	
TECHNIQUES	WEIGHTING
Layout and cutting out	15
SUBTOTAL	15

TECHNIQUE	WEIGHTING
Make and attach collar	20
Buttons	5
Buttonholes	10
Make and attach sleeves	10
SUBTOTAL	45
TOTAL	65

REQUIREMENTS:

- Recommendations for fabric: bottom weight cotton fabric, denim
- Sewing and tacking threads
- NINE buttons
- Needle
- Pins
- Tailor's chalk/Marking pencil
- Measuring tape
- Quick-unpick
- Paper scissors
- Fabric scissors
- Buttonhole scissors
- Sewing machine
- Overlocker

All seam allowances are 1,5 cm.

Note on seam allowances:

If the pattern has double contour, the seam allowances are included. They are 1 cm, unless specified otherwise.

If the pattern has single contour, the seam allowances are NOT included and need to be added when laying out the pattern.

Note on length of fabric:

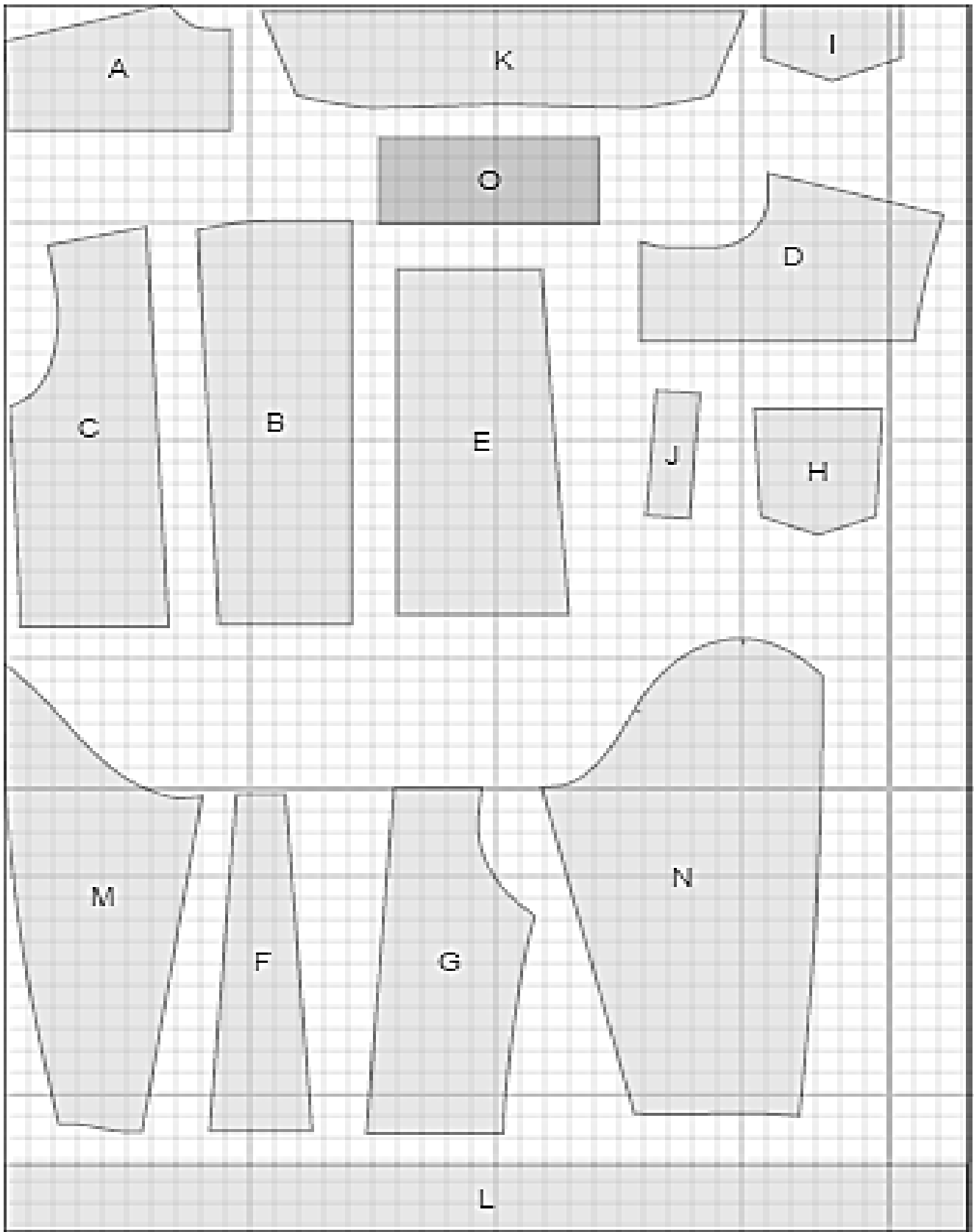
Note that the amount of fabric needed for your pattern is NOT included. It will depend on the selected pattern size, the width and design of the fabric you plan to use. First, print all the paper patterns and lay them out at the width of fabric you plan to use (usually from 90 to 150 cm). Measure how much fabric you will need. Don't forget to account for pieces that need to be cut multiple times and pieces that are cut on the fold.

LAYOUT AND CUTTING

1. Lay the pattern pieces on the fabric, pin and cut out.
2. Transfer pattern markings, where applicable. Fold all pattern pieces and extra fabric and submit to teacher for marking.
3. Learners may correct the cutting out AFTER the teacher has marked their work. NO marks will be awarded for redoing the cutting out.
4. All pattern pieces must be handed back to the teacher for safekeeping until the day of the practical examination.

CUTTING:**Main fabric:**

1. Back yoke – cut 1 on fold (A)
2. Centre back – cut 1 on fold (B)
3. Side back – cut 2 (C)
4. Front yoke – cut 2 (D)
5. Centre front – cut 2 (E)
6. Middle front – cut 2 (F)
7. Side front – cut 2 (G)
8. Pocket – cut 2 (H)
9. Pocket flap – cut 4 (I)
10. Off-set welt – cut 2 (J)
11. Collar – cut 2 (K)
12. Waistband – cut 1 (L)
13. Back sleeve – cut 2 (M)
14. Front sleeve – cut 2 (N)
15. Cuff – cut 4 (O)



INSTRUCTIONS:

1. Sew side backs to centre back. Serge and press seams towards side seams. Topstitch double decorative stitch along seams.
2. Sew back yoke to back. Serge and press seam upwards. Topstitch double decorative stitch along seam.
3. Make false welt pockets. Sew outer edges, trim and turn right side out. Sew raw edge of welt to jacket at marks, press welt toward side. Topstitch welt outer edge to jacket.
4. Sew side fronts to middle fronts. Serge and press seams towards side seams. Topstitch double decorative stitch along seams. Sew middle fronts to centre fronts. Serge and press seams towards side seams. Sew double decorative stitch along seams.
5. Turn edges of patch pockets under and press. Place pockets on fronts according to marking and sew. Topstitch double decorative stitch along the edges. Make buttonhole on flap. Place pocket flaps pairwise right sides together and sew on side and slanting sides. Trim seam and turn flap right side out. Make double decorative stitch on side and slanting edges. Pin flaps over pockets.
6. Sew fronts to front yokes catching flaps. Serge and press seams towards yoke. Topstitch double decorative stitch along seams.
7. Sew shoulder seams. Serge and press seams towards back. Topstitch double decorative stitch along seams.
8. Place collars right sides together and sew on ends and outer edge. Clip into seam, turn collar out, straighten and press. Topstitch double decorative stitch along the outer edge. Sew outer collar into neckline.
9. Turn the centre front seam allowance of neck edge under. Press.
10. Fold centre front edges to wrong side, first at 1 cm then again at 5 cm, and topstitch on neck edge and along centre fold down to hem.
11. Turn the edge of inner collar under and topstitch into connecting seam. Topstitch double decorative stitch along outer edges of collar.
12. Sew back sleeve to front sleeve, leaving a slit at lower edge. Serge and press seam open pressing the slit. Topstitch double decorative stitch along the seam and slit edges.
13. Make a gathering stitch along sleeve cap to adjust ease. Sew sleeve into open armhole matching marks and adjusting ease on sleeve cap. Serge and press seam towards jacket. Topstitch double decorative stitch along armhole. Sew sleeve seam and side seam. Serge and press seam towards back.
14. Fold cuff along the centre, right sides together, sew short edges. Trim corners, turn right side out, and press. Sew outer cuff to sleeve lower edge. Fold inner cuff upper edge under and topstitch along joining seam. Topstitch decorative stitch along cuff outer edges.
15. Fold waistband along the centre, right sides together, sew short edges. Trim corners, turn right side out, and press. Sew outer waistband to lower edge of jacket. Fold inner waistband upper edge under, and topstitch along joining seam. Topstitch decorative stitch along waistband outer edges.
16. Make buttonholes on left/right front and cuffs. Sew buttons on left/right front, patch pockets and cuffs.

NOTE:

Learners must be given an opportunity to complete the article after it has been marked.

14. CONCLUSION

On completion of the practical assessment task, learners should be able to demonstrate their understanding of the industry, enhance their knowledge, skills, values and reasoning abilities as well as establish connections to life outside the classroom and address real-world challenges. The PAT furthermore develops learners' life skills and provides opportunities for learners to engage in their own learning.