



# **basic education**

---

Department:  
Basic Education  
**REPUBLIC OF SOUTH AFRICA**

## **SENIOR CERTIFICATE EXAMINATIONS/ NATIONAL SENIOR CERTIFICATE EXAMINATIONS**

**SOUTH AFRICAN SIGN LANGUAGE HOME LANGUAGE P1**

**2023**

**MARKS: 70**

**TIME: 2 hours**

**This English transcription of the question paper consists of 12 pages.  
This should be used by the invigilator ONLY  
in conjunction with the question paper.**

## INSTRUCTIONS AND INFORMATION

1. This transcription of the question paper consists of THREE sections:  

SECTION A: Comprehension	(30)
SECTION B: Summary	(10)
SECTION C: Language structure and conventions	(30)
2. View all the instructions carefully.
3. Answer ALL the questions.
4. Create a NEW folder for EACH section when recording yourself.
5. Sign the number of each question correctly according to the numbering system used in this question paper before you record your answer.
6. Pay special attention to fingerspelling and SASL structure.
7. Sign fluently and clearly.
8. **The Booklet for Rough Work is intended for rough work only and will NOT be assessed. Candidates must hand it in at the end of the examination.**

**SECTION A: COMPREHENSION**

**QUESTION 1: VISUAL READING FOR MEANING AND UNDERSTANDING**

View TEXT A and answer the questions that follow.

**TEXT A**

**IF BEES BECOME EXTINCT ...**

- |   |  |          |
|---|--|----------|
| 1 | Honey bees are becoming extinct because of the excessive use of pesticides in crops and certain blood-sucking parasites that only reproduce in bee colonies. It is true that the extinction of bees would mean the end of humanity. For many of us, honeybees are annoying. We think that their only purpose is to keep buzzing around and stinging random people. This annoyance will certainly change when we stop getting spoonful of sweet honey in our morning cereal.  | 5        |
| 2 | The truth is that honeybees are crucial elements of our environment, and almost never get the credit that they deserve. If bees didn't exist, humans wouldn't either. We get most of our food from crops and 70% of these crops are pollinated by bees. Bees are important for reproduction among plants, as they transfer pollen from flower to flower.   | 10       |
| 3 | Since 2006, the bee population has declined considerably. Pesticides, diseases, parasites and poor weather due to global warming have played a major role in this decline. Bees are becoming extinct mainly because of two reasons: pesticides and parasites.  | 15       |
| 4 | The intense use of pesticides affects the central nervous system of bees. This causes paralysis and death and has played a major role in the decline of the population of bees. When bees are exposed to pesticides, they go into shock and forget their way home. This is like an insect's version of Alzheimer's disease. Along with pesticides, certain parasites are also responsible for the death of bees. They are blood-sucking parasites that affect both adult and young bees. The disease inflicted by these parasites can result in bees losing their legs or wings, essentially killing them.                               | 20       |
| 5 | The extinction of bees will affect plants and landscapes, animals, the availability of oils, clothing and also human life. Some plants are pollinated by wind, but that happens very slowly. Beetles and butterflies also pollinate, but bees are the most efficient insects for this purpose. Without bees, we wouldn't be able to savour delicious apples, cherries and many other fruits and vegetables. Almond trees would also be affected.   | 25       |
| 6 | If bees became extinct, there would be a massive decline in the production of crops. Although crops like rice and wheat don't require insect pollination, people cannot survive by eating rice and bread only. Herbivores are animals that eat plants only. Herbivores that depend on certain plants will be most affected. They would become extinct if plants ceased to exist. For example, many cattle that provide milk and meat depend on the specific plants that in turn depend on insect pollination. If the cow's food supply declines, then meat and milk production will decrease. This will seriously affect the human diet. | 30<br>35 |

7 The tragic irony of this is that by killing bees, we are only hurting ourselves. Our survival depends on the health of the planet and all the many creatures on the planet. If there are no insects, plants and animals we will be heading towards the end of humanity. Unless we take serious measures to save the bees, the planet's survival will be in trouble! 40

[Adapted from <https://www.scienceabc.com/nature/bee-extinction-means-end-humanity.html>]

**QUESTIONS: TEXT A**

1.1 BEES PEOPLE ANNOY HOW

In what ways are bees annoying to people? (1)

1.2 BEES EXTINCTION MEAN WHAT

Choose a phrase below that best explains the extinction of bees:

A: BEES INJURE  
A: Bees will be injured.

B: BEES DIE DIE DIE  
B: Bees will all die.

C: BEES WILL SICK SICK  
C: Bees will become sick.

D: BEES WINGS CUT CUT  
D: Bees will lose their wings. (1)

1.3 TEXT THERE SENTENCE SPOONFUL HONEY  
HONEY THIS USE OTHER WHAT  
TWO GIVE

The text states that we get 'spoonsful of sweet honey in our morning cereal'. Name TWO other uses of honey. (2)

1.4 FOOD GROW-PRODUCTION BEES HELP HOW

How do bees support the production of food? (2)

1.5 BEES LESS-LESS-LESS-LESS WHY FIRST CAN-SPRAY-SPRAY SECOND  
INSECT BITE OTHER WHAT

In addition to pesticides and parasites, what other factors play a role in the decline of the population of bees? (2)

1.6 GLOBAL WARMING MEAN WHAT

What do you understand by *global warming*? (2)

- 1.7 CAN-SPRAY-SPRAY BEES SPRAY-AT DIE HOW EXPLAIN  
Explain how pesticides cause bees to die. (2)
- 1.8 TEXT CHUNK 4 THERE STATEMENT INSECT SAME PEOPLE MEMORY LOSS EXPLAIN DEEP  
Critically comment on the statement, 'This is like an insect's version of Alzheimer's disease.' (3)
- 1.9 BEES POLLINATION PROCESS OTHER HOW COMPARE  
Compare the pollination process by bees to other pollination processes. (2)
- 1.10 CHUNK 6 BEES EXTINCTION HUMAN DIET LINK HOW EXPLAIN  
The extinction of bees has an effect on the human diet (Chunk 6). Motivate this statement. (2)
- 1.11 TEXT THERE IRONY IMPORTANT EXPLAIN  
The use of irony in this text is meaningful. Discuss. (3)

View TEXT B and answer the questions that follow.

**TEXT B**



[Source: <http://teehunter.com/2013/08/celebrities-join-ejf-and-fashion-label-to-save-the-bees/>]

**QUESTIONS: TEXT B**

1.12 BEES LIFE STRUGGLE-STRUGGLE  
PICTURE THERE SHOW HOW

How does the picture indicate that bees fight for survival? (2)

1.13 PICTURE THERE TEXT CHUNK 4 COMPARE  
FARM-PERSON-PERSON BEES PROTECT HOW

Compare the picture in TEXT B to the information in TEXT A, Chunk 4 (comprehension). What should farmers do to protect bees?

(3)

1.14 TEXT A PICTURE THERE B COMPARE  
IMPACT-VIEW IMPACT-VIEW BEST WHICH

Compare TEXT A to the picture in TEXT B. Which text conveys the message with a greater impact?

(3)

**TOTAL SECTION A: 30**

## SECTION B: SUMMARY

### QUESTION 2: SUMMARISING IN YOUR OWN WORDS

TEXT C is an article on 'YouTube is replacing kid's hobbies'. Summarise the presentation.

- NOTE:**
1. Your summary should include SEVEN points.
  2. Your summary should be 2–4 minutes.

#### TEXT C

#### YOUTUBE IS REPLACING KID'S HOBBIES

Are we raising a generation of web addicts? A major new study seems to point in that direction, saying that children in the UK have become so addicted to screen time that they are abandoning their hobbies. It found that children under five years spend an hour and 16 minutes a day online and their screen time rises to four hours and 16 minutes when gaming and watching TV. Youngsters aged from 12 to 15 years average nearly three hours a day on the Web and two more hours watching TV.

The study said YouTube was 'a near permanent feature' of many young lives and seven in 10 older children took smartphones to bed. It concluded that 'Children were watching people on YouTube pursuing hobbies that they did not do themselves or had recently given up on'.

Creative parenting expert and author, Nikki Bush, believes the danger of technology is that it has become a management tool. Many times parents look to it as a virtual babysitter, to the detriment of a child's mental health.

'Your child's cognitive intelligence is all based on emotional bonding. They are growing up in a very hostile world and it's hostile for a number of reasons,' said the author of the bestselling book *Tech Savvy Parenting*. What they really need is that feeling of safety and security that comes from belonging and togetherness. It's very important for them – it's like a cushion for a hostile world. And that comes from human interaction, which is very important.'

But as parents spend more time away from their younger ones, many are flocking to YouTube to fill that void. Some youngsters are becoming so obsessed with YouTube celebrities that they idolise them as role models, an Office of Communications report said. 'YouTube was a near permanent feature of many children's lives, used throughout the day,' researchers in the study said.

Often they come across unsuitable content by accident, when they are searching for something else. Sometimes they simply seek out material they are too young to view. They are also led to it by YouTube's own algorithm which feeds them suggestions based on their tastes.

Children prefer YouTube to old-fashioned television or TV on demand services because they 'can easily access exactly what they want to watch and are being served an endless stream of recommendations tailored exactly to their taste,' the report said. Many of the parents involved in the research were shocked to learn what their children had been watching.

[Source: *The Mercury*, 30 January 2019]

**TOTAL SECTION B: 10**

**SECTION C: LANGUAGE STRUCTURES AND CONVENTIONS**

**QUESTION 3: ANALYSING ADVERTISING**

View TEXT D and answer the questions that follow.

**TEXT D**



[Source: [https://www.youtube.com/watch?v=5KMTv5Oz9Q4&fbclid=IwAR0G\\_Fw7Mcp5dDr9mjQRtMep\\_ntKrTCT4uYQAJ8](https://www.youtube.com/watch?v=5KMTv5Oz9Q4&fbclid=IwAR0G_Fw7Mcp5dDr9mjQRtMep_ntKrTCT4uYQAJ8)]

**QUESTIONS: TEXT D**

- 3.1 CLIP THERE  
GIRL PERSON CAMERA-ANGLE-MOVE  
DEAF  
FIND HOW

Discuss how the camera angle shows that the girl is deaf. (2)

- 3.2 ADVERT SOUTH AFRICA FILM NO  
EVIDENCE FIND-FIND  
GIVE

Find contextual evidence that the advertisement was NOT filmed in South Africa. (2)

- 3.3 CLIP THERE  
SINGING ZOOM  
DRUM ZOOM  
TRUMPET ZOOM  
WHY

Why does the advertisement zoom in on the caroller's mouth and musical instruments? (2)



- 3.4 CLIP THERE-THERE  
GIRL  
FEEL THERE  
FEEL THERE  
COMPARE

Compare the girl's response in EACH of the clips. (2)

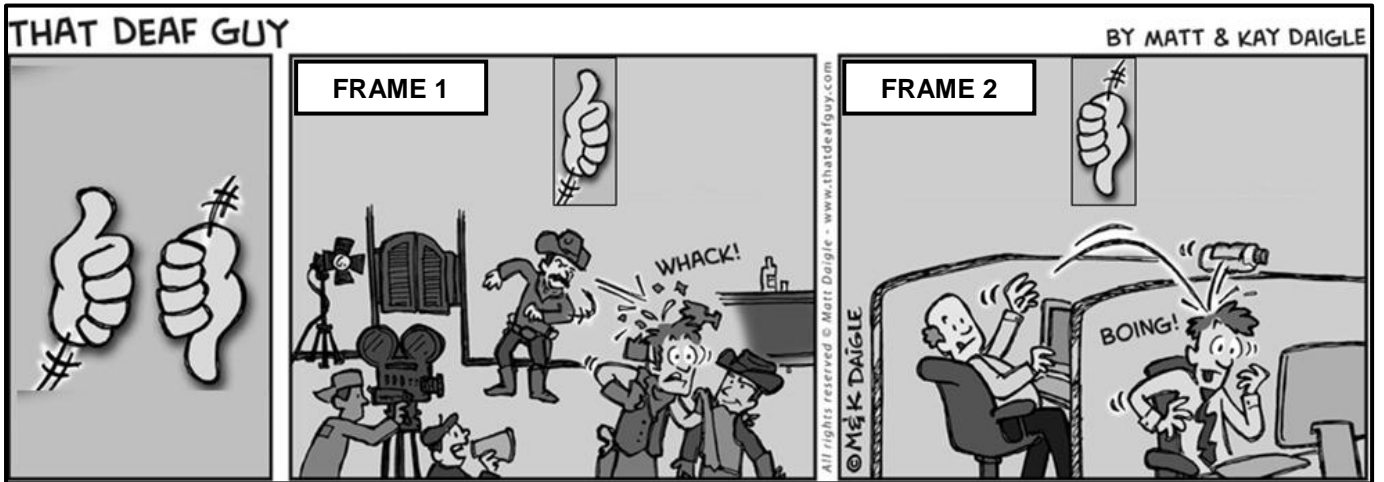
- 3.5 THERE  
LOGO L-O-G-O  
PERFECT/SUITABLE  
EXPLAIN

Comment on the appropriateness of the logo for Storysign. (2)  
**[10]**

**QUESTION 4: UNDERSTANDING OTHER ASPECTS OF THE MEDIA**

Study TEXT E and answer the questions that follow.

**TEXT E**



[Source: <https://goo.gl/images/jYBT5S>]

**QUESTIONS: TEXT E**

4.1 FRAME 1 FRAME 2 WORK THIS THIS DIFFERENT HOW

What are the differences in work situations between FRAME 1 and FRAME 2? (2)

4.2 FRAME 2 PERSON PERSON THERE  
FACIAL EXPRESSION EXPLAIN

Account for the expressions of the two people in FRAME 2. (2)

4.3 FRAME 1 MAN BOTH THIS-MAN LOUDSPEAKER-TALK THIS-MAN  
BOTTLE THROW  
BOTH DIALOGUE YOU CREATE

Create a dialogue between the director and the person throwing the bottle in FRAME 1. (3)

4.4 DEAF CULTURE FRAME 2 THIS THUMBS-DOWN WHY  
EXPLAIN DEEP

Critically discuss why FRAME 2 is given a 'thumbs down' with regard to Deaf culture. (3)

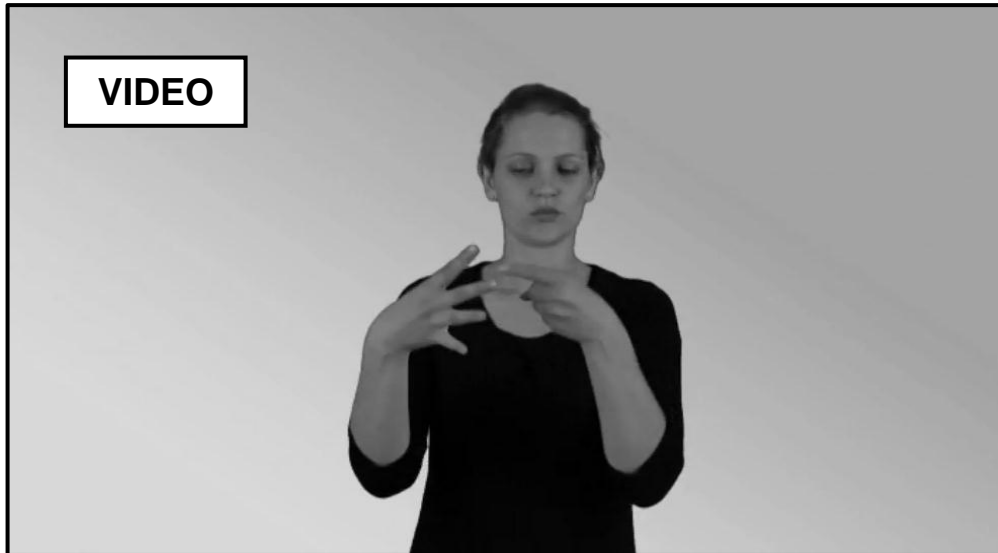
**[10]**

### QUESTION 5: USING LANGUAGE CORRECTLY

View TEXT F, which contains some errors, and answer the questions that follow.

#### TEXT F

#### SYMPTOMS OF SCREEN ADDICTION



[Source: US Handlab; Stellenbosch University]

#### QUESTIONS: TEXT F

- 5.1 CLIP THERE  
QUESTION THERE  
FIRST FIND  
SIGN-GIVE  
SECOND THIS THIS THIS  
WHICH

View the clip.

Identify the question in the clip. What type of question is this?

(2)

- 5.2 CLIP THERE  
VERB LOOK LOOK  
THIS THIS  
TIME-CHANGE  
TWO  
GIVE GIVE

View the verb 'LOOK' in the clip.

Give TWO other temporal aspect examples of this verb.

(2)

- 5.3 CLIP THERE  
NEOLOGISM CREATE  
THIS HOW  
EXPLAIN

Discuss how the neologism in this clip is created.

(2)

5.4 TEXT THERE  
SIGN REPEAT-REPEAT  
SIGN REPEAT-REPEAT  
SIGN REPEAT-REPEAT  
WHY  
EXPLAIN

What is the function of the repeated signs in the text? (2)

5.5 CLIP THERE  
STRUCTURE WRONG  
FIRST – FIND  
SIGN  
SECOND – FIX  
SIGN

Select the INCORRECT sentence from the clip provided. Edit the sentence using the correct SASL structure.

(2)

[10]

**TOTAL SECTION C: 30**  
**GRAND TOTAL: 70**