



education

Department:
Education
REPUBLIC OF SOUTH AFRICA

**NATIONAL
SENIOR CERTIFICATE**

IBANGA 12

ISIXHOSA ULWIMI LWESIBINI OLONGEZELELWEYO (SAL)

IPHEPHA LOKUQALA (P1)

NOVEMBA 2008

AMANQAKU: 120

IXESHA: 2 iiyure

Olu viwo lunamaphepha ali-19.



IMIYALELO

1. Eli phepha lemibuzo linamacandelo AMANE angala:
 - ICANDELO A: Uvavanyo lokuqonda (30 amanqaku)
 - ICANDELO B: Ushwankathelo (10 amanqaku)
 - ICANDELO C: Ukusetyenziswa kolwimi (60 amanqaku)
 - ICANDELO D: Uncwadi (20 amanqaku)
2. Phendula YONKE imibuzo.
3. Bhala icandelo ngalinye kwiphepha ELITSHA uze ukrwele umgca ekupheleni kwecandelo NGALINYE.
4. Shiya umgca emva kwempendulo NGANYE.
5. Bhala ngokucocekileyo nangokucacileyo.
6. Landela imiyalelo ngocoselelo.
7. Bhala iimpendulo zakho ngokuchanekileyo ngokwendlela yokunombola esetyenzisiweyo kwiphepha lemibuzo.
8. Qwalasela upelo nolwakhiwo lwezivakalisi.

ICANDELO A: UVAVANYO LOKUQONDA**UMBUZO 1****ISICATSHULWA A**

- 1.1 Funda esi sicutshulwa sihamba nomfanekiso waso ngononophelo uze uphendule imibuzo elandelayo.



Themba: Molo Lulama.

Lulama: Molo nawe Themba. Kutheni wandijonga ngolu hlobo?

Themba: Ndjijonge indlela omhle ngayo. linwele zakho zintle.

Lulama: Tyhini! Nam ndijonge lo mnqwazi wakho.

Themba: Ndingwenela ukuthetha nawe sisobabini. Ucinga ukuba singaya phi?

Lulama: Masiye kwindawo epholileyo ngasemlanjeni. Apha ehlotyeni kubetha umoya opholileyo. Kukho imithi nengca eluhlaza. lintaka zicula kamnandi.

Themba: Kulungile sithandwa. (*UThemba utsala uLulama kuba ufuna ukumphuza.*) Ndingcinga ukuba sikhe sityelele kwelinye iphondo, iKwaZulu Natal okanye iMpuma-Koloni ngezi holide zehlobo.

Lulama: Hayi, mna ndicinga ngenye indawo. Zininzi iindawo umntu anokuzicinga.

Themba: Unqwenela ukuya kweliphi iphondo sithandwa?



Lulama:	Kutheni ufuna ukuba kukhethe mna kuqala nje? Kulungile ke, masiye kwiphondo leNtshona-Koloni. Lihle eli phondo ehlotyeni. Kukho intaba yeTafile. Siza kuzonwabisa elwandle. Amabhoma eediliya anomtsalane. Abakhenkethi bayalithanda eli phondo.
Themba:	Ewe, masiye ukuze sidibane nabantu bezinye iindawo.
	<i>(Bahleli phantsi komthi beqhuba incoko yabo. UThemba ucela uthando kuLulama. UThemba umana ukusondela embamba. ULulama uyamsusa kuye. ULulama naye uyamthanda kodwa akafuni ukumxelela.)</i>
Lulama:	Musa ukungxama. Ndinike ithuba lokuyicinga le nto uyicelayo.
Themba:	Uncede sithandwa, undinike impendulo eza kundonwabisa. Uyathembisa Lulama?
	<i>(ULulama umjonge ngamehlo anothando noncumo. Weva ubushushu begazi ngenxa yothando. Wakuva oku kufudumala entliziyweni, entloko, esiswini, nasemzimbeni wonke. ULulama ucinge nzulu ngoThemba. Wayecinga ukuba ingaba uyamazi kakuhle na uThemba lo. Kwafika amantombazana aze kukha amanzi. La mantombazana abuza imibuzo emininzi yogezo kuLulama. Abuza okwenzekayo phakathi kwakhe noThemba.)</i>

IMIBUZO:

- 1.1.1 Ketha kwezi mpendulo zilandelayo eyona ichanekileyo uze uyixhase ngokujonga emfanekisweni. ULulama noThemba babonakala benjani? (2)
- A Bonwabile
B Banomsindo
C Baxhalabile
- 1.1.2 Aba bantu bakwindawo epholileyo. Nika izinto zibe MBINI ezibonisa oko. (2)
- 1.1.3 Yintoni eyayibangela ukuba uThemba atsale uLulama? (1)
- 1.1.4 Yitsho ukuba oku kungezantsi KUYINYANI na okanye BUBUXOKI. (1)
- (a) ULulama wavuma ukuphuzwa nguThemba. (1)
(b) ULulama noThemba babethandana. (1)
- 1.1.5 UThemba wayelindele impendulo yesicelo sakhe kuLulama. (1)
- (a) Wayecele ntoni? (1)
(b) Wayelindele impendulo enjani/ethini? (1)
(c) Ucinga ukuba uLulama uza kuphendula athini? (1)
- 1.1.6 Ngawaphi amalungu omzimba avakala efudumele kuLulama ngenxa yokuthanda kwakhe uThemba? Nika amalungu omzimba AMATHATHU. (3)



- 1.1.7 OoLulama bathetha ngawaphi amaphondo? Yitsho abe (3)
MATHATHU.
- 1.1.8 Ziintoni ezitsala abakhenkethi kwiphondo leNtshona-Koloni? (2)
- 1.1.9 Khetha phakathi kuka-(a) no-(b). Le ndawo bakuyo ooLulama ikufutshane:
(a) Nentaba
(b) Nomlambo (1)
- 1.1.10 Yintoni eyaphazamisa uThemba noLulama kwincoko yabo? (1)

ISICATSHULWA B: OKUBONWAYO

1.2 Jonga le khathuni, uze uphendule le mibuzo ilandelayo.



[Ithathwe kwi-Iso Lezwe, Disemba 2007]

IMIBUZO

- 1.2.1 Kutheni la madoda mabini ebekwe phezulu kunabanye abantu?.
Khetha kwezi mpendulo zingezantsi:
(a) Bafutshane
(b) Baziinkokheli (1)
- 1.2.2 Umntu A nomntu B abajongananga, omnye ujonge kwelinye icala nomnye kwelinye. Ucinga ukuba kutheni behleli ngolu hlobo? (2)

- 1.2.3 Indlela ahleli ngayo umntu A, imbonakalo yobuso bakhe, isandla ezantsi kwesilevu, zonke ezi zinto zibonakalisa ukuba:
- (a) Uyacinga
 - (b) Wonwabile
 - (c) Uyalila
- (1)
- 1.2.4 Kutheni umntu B elandelwa ngabantu abaninzi nje? (2)
- 1.2.5 Wenza ntoni umntu B? (1)
- 1.2.6 Umntu (D) othethayo apha emfanekisweni ucinga ntoni malunga nomntu A? (1)
- 1.2.7 Ucinga ukuba umntu D uza kulandela owuphi umntu? (1)
- 1.2.8 Jonga inkangeleko yobuso bomntu C. Lo mntu ucinga ntoni okanye uziva njani? (1)

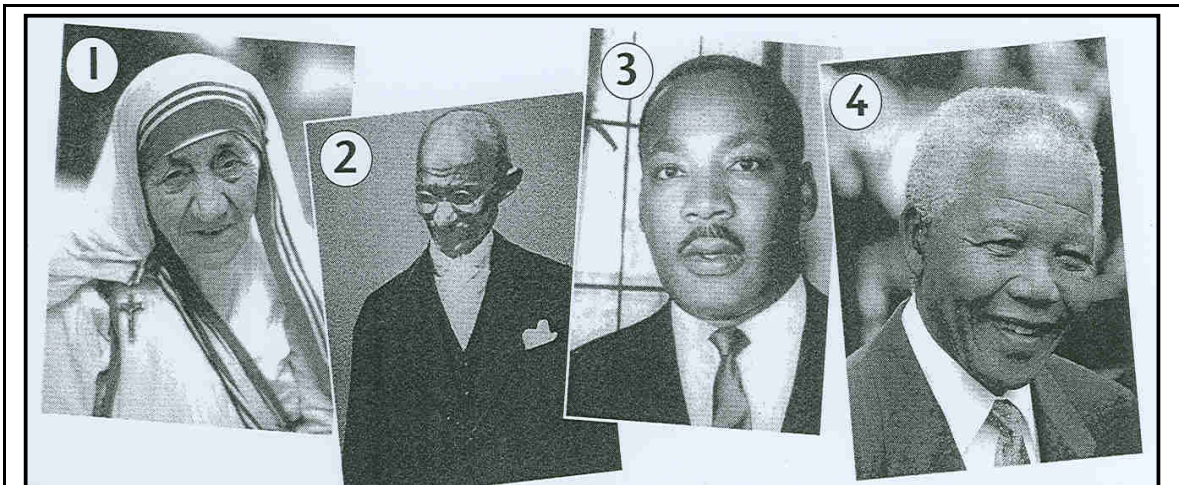
AMANQAKU ECANDELO A: 30



ICANDELO B: ISISHWANKATHELO**UMBUZO 2**

Funda esi sicutshulwa silandelayo sihamba nemifanekiso uze usishwankathele. Landela le miyalelo xa ushwankathela:

1. Funda ngemisebenzi yaba bantu abalandelayo: UMother Theresa, uGandhi, uMartin Luther King noTata uMandela.
2. Shwankathela esi sicutshulwa uthethe ngezi zinto:
 - (i) Thetha ngeenjongo zabo
 - (ii) Babesilwa njani?
 - (iii) Bafumana iingxaki ezinjani ebomini babo?
 - (iv) Zaba yintoni iziphumo zokulwa kwabo noRhulumente? (7)
3. Bhala ngezivakalisi ezipheleleyo. Sebenzisa ulwimi olufanelekileyo. (2)
4. Shwankathela ngamagama amalunga nama-40 ukuya kuma-50. Bhala inani lamagama owasebenzisileyo. (1)



UMother Theresa wayengatshatanga. Waqala ukusebenza e-Ireland eneminyaka eli-18 ubudala. Wasebenza nase-Indiya. Wayengumntu onothando. Wanceda abantu ababekwiimeko ezimbi. Ngo-1948 wavula isikolo kwindawo yabantu abahluphekileyo e-Calcutta. Wasebenza nabantu abagulayo, abangenabazali nezihlobo. Wasweleka ngo-1997.

UMohandas Gandhi wazalelwa e-Indiya. Wayeligqwetha. Walwela amalungelo ama-Indiya eMzantsi Afrika nase-Indiya. Wasebenzisa itoyitoyi ngaphandle kokulwa. Wanyanzela iBritani ukuba ibuyisele ilizwe lase-Indiya kubantu balo. Wasebenzela ukwakha ubuhlobo nokuhlalisana kakuhle phakathi kwamaHindu namaMoslem. Wasweleka ngo-1948.

UMartin Luther King wayengumfundisi waseMelika. Walwela amalungelo abantu abamnyama baseMelika. Abamnyama babephila kanzima. Wayefuna ukuba uRhulumente abaphathe kakuhle abantu. Wayefuna uxolo phakathi kwabamhlophe nabamnyama. Wathetha noRhulumente ngendlela yokuphatha abantu kakuhle. Abantu batoyitoya bengazikhweli iibhasi. Wabhubha ngo-1968 phambi kokubona onke amaphupha akhe ephumelele.

UNelson Rholihlahla Mandela wabanjwa ngo-1963 nguRhulumente wocalucalulo. Wayelwela amalungelo abantu abamnyama baseMzantsi Afrika. Wahlala iminyaka emininzi entolongweni eRobben Island. Wasebenza noMongameli uFW de Klerk, ukuphelisa ucalucalulo. Ukuphuma kwakhe entolongweni wenza uxolo phakathi kweentlanga. Wenza ukuba kubekho inkululeko. Wanyulwa waba nguMongameli wokuqala omnyama woMzantsi Afrika. Ube yinkokheli ethandwa kakhulu jikelele. Uvule ingxowa yokunceda abantwana 'iMandela Childrens' Fund'.

Umsebenzi wabo wawungekho lula kuba babesukelwa ngamapolisa bebanjwa bavalelwe ezintolongweni.

AMANQAKU ECANDELO B: 10



ICANDELO C: UKUSETYENZISWA KOLWIMI**UMBUZO 3**

- 3.1 Phinda ubhale esi sicutshulwa silandelayo uze ulungise iziphene nolwimi olungamkelekanga.
- lindwendwe yalungiselelwa idawo yokulala. ingaba siziphatha kakhuhle iindwendwe kweli (5)
- 3.2 Bhala ezi zivakalisi kwisininzi.
- Umzekelo: Isikolo siyavalwa.
Ipendulo: Izikolo ziyavalwa.
- 3.2.1 Umntwana uyabaleka. (2)
3.2.2 Inja iyakhonkotha. (2)
- 3.3 Fakela izimamva ezifanelekileyo. Khetha kwezi. Bhala igama kuphela.
- [- eka, -ela-isa]
- Umzekelo: Utitshala ufunda abafundi.
Ipendulo: Utitshala ufundisa abafundi.
- 3.3.1 Utata uhamba abafundi besikolo ngemoto. (1)
3.3.2 Lo mntu uyathanda kakhulu. (1)
- 3.4 Izakhi ezikrwele umgca ngaphantsi zibonisa ntoni kwezi zivakalisi zilandelayo? Khetha kwezi:
- (i) Isini
(ii) Ukuzalana
(iii) Ubuncinane
- 3.4.1 Sityale imithana emininzi esikolweni. (1)
3.4.2 Umfundisikazi onobubele uyathandeka. (1)
- 3.5 Bhala igama elifanelekileyo kuphela elikwizibiyeli (...).
- 3.5.1 Indoda (fika) namhlanje. (1)
3.5.2 Isikolo (phuma) ngentsimbi yesibini. (1)
3.5.3 Amanzi (shushu). (1)



3.6 Bhala ezi zivakalisi kwixesha elizayo.

Umzekelo: Umntwana (uyatya).

Impendulo: Umntwana uza kutya.

3.6.1 Abantu (bafika) bephethe impahla. (1)

3.6.2 Ixhego (litya) isonka. (1)

3.6.3 Inkwenkwe (idlala) ibhola. (1)

3.7 Khetha igama elifanelekileyo kula magama akwizibiyeli uvale izikhewu kwizivakalisi ezilandelayo. Bhala igama elifanelekileyo kuphela.

[bona; ezikamama; esona; oku; ezona; eliya]

3.7.1 ... bahamba becula. (1)

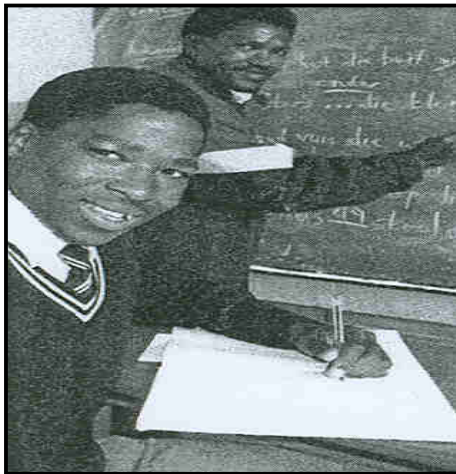
3.7.2 Ndithanda ... kutya kumnandi. (1)

3.7.3 Ufuna ... silula isifundo. (1)

3.8 Fakela izalathandawo ezifanelekileyo kwezi zivakalisi zilandelayo. Bhala igama kuphela.

Umzekelo: Umama ungena (indlu).

Impendulo: Umama ungena endlwini.



3.8.1 Utitshala ubhala (ibhodi). (1)

3.8.2 U-Ayanda ubhala (incwadi). (1)

3.8.3 U-Ayanda uyamamela kutitshala wakhe (isikolo). (1)

3.9 Khetha kumagama owanikiweyo uvale izikhewu. Bhala igama kuphela.

[yaka; ntsho-o; qhwa; tu]



- 3.9.1 Wathula ... uSipho kuba wayediniwe. (1)
 3.9.2 Ibhathi kaSipho yayiluhlaza (1)
 3.9.3 Ikhephu limhlophe ... entabeni. (1)

3.10 Bhala ezi zivakalisi kwimo elandulayo.

Umzekelo: Umntwana uyatya.

Impendulo: Umntwana akatyi.

- 3.10.1 UNomsa ufunda incwadi yamabali. (1)
 3.10.2 Umama uyakwazi ukucula. (1)
 3.10.3 Ndiyifundile incwadi. (1)
 3.10.4 Indoda yathenga imoto. (2)

3.11 Sebenzisa la magama mabini kwisivakalisi.

Umzekelo: Indoda – umfazi

Impendulo: Indoda nomfazi baya edolophini.

- 3.11.1 Intombazana nenkwenkwe (1)
 3.11.2 Inja nekati (1)

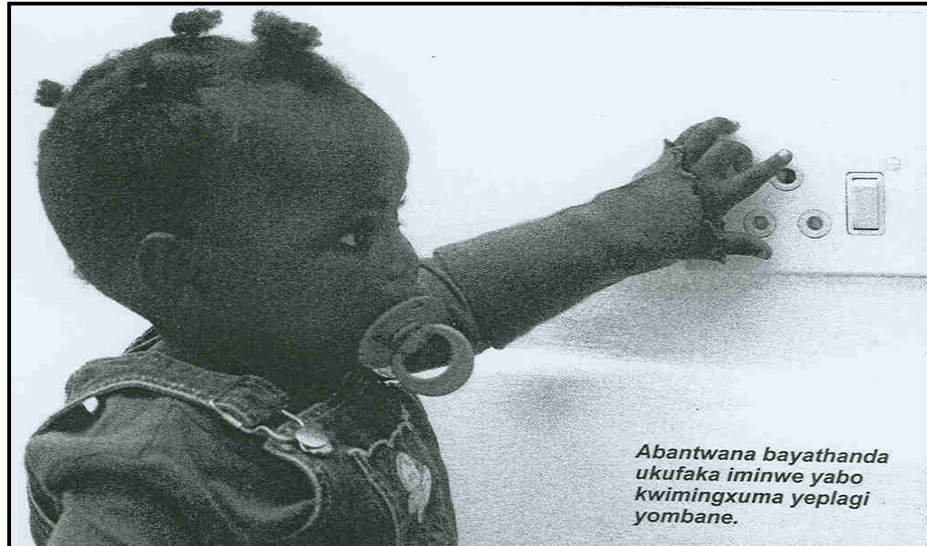
3.12 Phinda ubhale esi sivakalisi ngendlela elungileyo.

idami Umntwana uncanca (1)

3.13 Khetha isikhuzo esifanelekileyo kwizibiyeli (...). Bhala isikhuzo kuphela.

3.13.1 (Heke!, Yhoo!) umntwana uza kutsha ngumbane. (1)

3.13.2 (Owu!, lw-u-u!) aluseluhle ngako olu sana. (1)



3.14 Dibanisa ezi zivakalisi zibini ngokusebenzisa izihlanganisi ezifanelekileyo. Khetha kwezi:

[kuba; noko; ukuba; ukuze; nangona; kodwa]

3.14.1 Ndiyazi. Ulisela elidala. (1)

3.14.2 Ndiyaya esikolweni. Ndifuna ukufunda. (1)

3.14.3 Usazifihla. Ndikubone kakuhle. (1)

3.15 Funda izivakalisi ezilandelayo uze ubhale izifinyezi zamagama abhalwe ngqindilili.

Umzekelo: Kufike u**Gqirha** omtsha esibhedlela.

Impendulo: uGq.

3.15.1 **UMnumzana** Hlela ufundisa kwisikolo samabanga aphantsi. (1)

3.15.2 **Inkosikazi** yakhe yaphumelela ekubalekeni. (1)

[43]

UMBUZO 4

4.1 Jonga lo mzekelo uze uphendule umbuzo olandelayo.

Umzekelo: "Ndifunda incwadi", utshilo uThemba.

Impendulo: UThemba uthe ufunda incwadi.

(i) "Ndisadlala ibhola", utshilo uNomsa.

Sibhale kwakhona esi sivakalisi uqale ngolu hlobo:

UNomsa uthe ...

(2)

4.2 Funda esi sicutshulwa singasezantsi, ujonge nomfanekiso, uze uphendule imibuzo elandelayo.

I-OMO yisepha yokuhlamba enamandla. Icoxa iimpahla kakuhle kakhulu. Le sepha ayitshisi izandla. Kule sepha kususwe iikhemikhali. Isusa ukungcola empahleni. Ixabiso layo liphantsi. I-**OMO** yimveliso esemgangathweni ophezulu. Ukuba umntu unombuzo angafowunela kule nombolo: 086-0572-908.

4.2.1 Kutheni umntu engathanda ukuthenga i-**OMO**? Bhala izinto EZIMBINI.

(2)

4.2.2 Kutheni besebenzise umfanekiso womntu ongumama kule ntengiso?

(2)

4.2.3 Kutheni igama i-"**OMO**" libhalwe ngamagama amakhulu kulo mfanekiso ungentla?

(1)

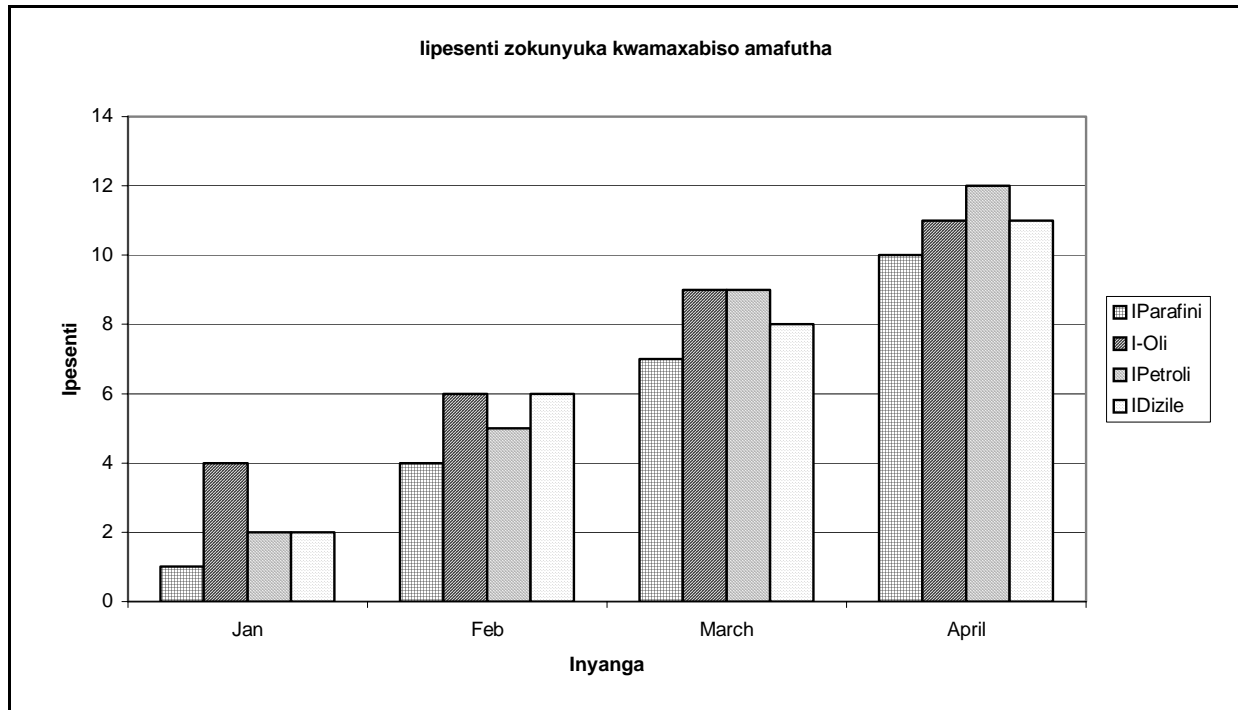
4.2.4 Uncedo singalufumana ngokufowunela kweyiphi inombolo?

(1)



4.2.5 Khetha igama elibolekiweyo kule ntengiso. (1)

4.3 Phendula imibuzo usebenzise le grafu ilandelayo.



4.3.1 Yeyiphi inyanga eneepesenti eziphezulu zokunyuka kwepetroli?

4.3.2 Inyuke ngeepesenti ezingaphi i-Petroli phakathi kukaJanuwari noAprili? Khetha kwezi mpendulo zilandelayo: (1)

(a) 2,5

(b) 10

(c) 6,5

(1)

4.3.3 Ngawaphi amafutha aneepesenti eziphezulu kwinyanga kaJanuwari? (1)

4.3.4 Uyavumelana nam xa ndisithi ubomi babathengi buza kuba lula kwixesha elizayo? Utsho ngoba kutheni? (2)

4.4 Khetha elona gama lifanelekileyo kulawo akwizibiyeli (...). Bhala igama kuphela.

4.4.1 Ewe! Madoda yakhani (amandlu; izindlu) esixekweni. (1)

4.4.2 (Xa; Nxa) ungafuni kusebenza kufuneka uhambe kulo mzi kabawo. (1)

4.4.3 linkuni (ziyanetha; ziyana) phandle zingenise endlwini. (1)

[17]

AMANQAKU ECANDELO C: 60



ICANDELO D: UNCWADI

KwiCandelo D makuphendulwe UMBUZO 5 okanye UMBUZO 6.

UMBUZO 5**IMBADU ngu GB SINXO**

Funda ezi zicatshulwa zilandelayo wandule uphendule imibuzo elandelayo.

5.1 IINZINGO ZOMONI

Phaya emaGqunukhwebeni, eXesi, kwilali ekuthiwa yiNjwaxa, kwakukho indoda elisela elikhulu. Lo mfo wayengowasemaTipheni, inguThafeni igama lakhe. Wayeneenkomo ezininzi, nebhokhwe neegusha, ekude kakhulu kwinto yokuba angabizwa ngokuthiwa lihlwempu. Kodwa, nangona wayesikelelwe kangako ngamazulu ngobutyebi, akazange ayeke ukunqwenela izinto zabantu abe lisela elincanyiweyo.

5.1.1 Sithini isiduko salo mfo? (1)

5.1.2 Ucinga ukuba kutheni esiba nje kodwa enezinto? (1)

5.1.3 Yingxowa yantoni le ibiwe ngulo mfo? (1)

5.1.4 Eli bali likufundisa ntoni? (1)

5.2 MHLA SANCAMA

"Mfazi, mfazi, ndilifumene ekugqibeleni icebo."

Kwa oko bakhanya obo buso buhle kunene bomfazi wam, akabuza nokuba licebo lantoni na, kuba ngokunje yayise inye kuphela into esinokufuna icebo layo, isikade eso singuNomacuntsu.

"Khawutsho, sithandwa, lithini icebo lakho?" Ehleka-hleka evelisa loo mazinyo akhe amhlophe mahle ngokweperile.

"Nali, sithandwa. Inye kuphela indlela esinokwahlukana ngayo nalo mtu, inye kuphela, nokuba na ithetha ukuba masikhuphe neyokugqibela ipeni yethu eseposini."

"Ithini loo ndlela 'sekaCholani?'"

"Mfazi, masithathe iiponti zibe lishumi, siye evenkileni, sithenge yonke into awakha wayicela kuthi uNomacuntsu, siyithenge ibe ninzi, into nganye ibe nokumgcina iinyanga ngeenyanga engakhange ayiswele, sikhe siphumle."



- 5.2.1 Ngoobani aba bathethayo kweli bali lingentla? (2)
- 5.2.2 Licebo lantoni eli lifunyenweyo? (1)
- 5.2.3 Nika into ibenye awayethanda ukuyicela uNomacuntsu kubamelwane. (1)

5.3 KUGULA OTHANDAYO

"Nazi iintshaba zakho ndizibona, mfondini!" Latsho igqirha. Sajongana, sayekana, onke amehlo ethu amila kuSoligoso. "Utshaba olo lukuthumela ngesilwanyana, mfondini!" "Ngesikhova! Ngesikhova!" Sakhwaza sisitsho sonke ngaxeshanye. Yabonakala incuma into enkulu, ivumelana nathi.

Kwa oko sinyuke nengalo, sambongoza ukuba amgonye kwalapho uSoligoso. Layenza bethu yonke loo nto igqirha. Semka apho sisemathembeni amakhulu ngempilo yomhlobo wethu.

- 5.3.1 Utshaba lukaSoligoso luthumele esiphi isilwanyana? (1)
- 5.3.2 Abantu benza ntoni lakuba igqirha lithe, 'Nazi iintshaba zakho ndizibona mfondini'? (2)
- 5.3.3 Igama elinomgca ngaphantsi, amgonye lithetha ukuthi: (1)
- A amnyange
B amqinise
C amthandazele

5.4 MHLA BOYISAKALA

Baqala ke abantu benza umfela-ndawonye wokuba umfundisi onje ukungalandeli bahlukane naye, wabe ke yena ngelakhe icala efungile ukuba ubomi bakhe bonke uya kubugqibela apho kuloo ndawo waphelisela kuyo onke amandla akhe. Loo ndawo wayeyithanda ngaphezu kwento yonke kulo mhlaba.

Akwazeki ke nokuba na le meko yada yaya kufika na ezindlebeni zikabhisophu, kodwa kwenzeka ukuba kuthi ngelo xesha kanye kufike ezona ndaba zalenza imincili engathethekiyo ibandla. UBhishophu wayemsusa umfundisi lowo apho, emsa eMaqandekeni, indawo ke leyo eyayikude lee apho kubo ngolona hlobo luxolisayo.

- 5.4.1 Abantu benza umfela-ndawonye kuba: (1)
- A bayamthanda umfundisi.
B bafuna ukwahlukana naye.
C bafuna abe yiBhishophu.



- 5.4.2 Ngubani umntu ongasentla komfundisi ngesikhundla? (1)
- 5.4.3 Nika igama le ndawo awayefuna ukumsa kuyo umfundisi lo mntu uku 5.4.2. (1)
- 5.4.4 Ngaba ibandla eli laliziva njani ngokuhamba koMpriste walo? (1)

5.5 UKUBA EBENGUMLUNGU

Wada wahlikihla ukucinga oku akufika kumLungu. Aba ke bona abantu kwathi kwasekuzalweni baba sebezizityebi. Bonke bephela babezalwa ngabazali abazizityebi.

Yonke imisebenzi yobom yayihleli ivulekile kubo. Awu! Akwaba ebenguMlungu! Inene, ube uya kubona izinto zamehlo! Akwaba! Akwaba wayezalwe wangumLungu.

- 5.5.1 Kutheni enqwenela ukuba abe ngumLungu? (1)
- 5.5.2 Yinyani ukuba umntu omnyama uyahlupheka? Xhasa impendulo yakho. (3)
- [20]**

OKANYE

UMBUZO 6

SASINONCWADI KWATANCI ngu SC SATYO

Funda imibuzo ngononophelo wandule ukuphendula.

6.1 UNCWADI

- 6.1.1 Kuncwadi lwesiXhosa kukho:
- A Uncwadi olubhaliweyo nolungasoze lubhalwe.
B Uncwadi lomlomo nolungasabhalwa.
C Uncwadi lomlomo nolubhaliweyo. (1)
- 6.1.2 Uncwadi lwemveli lunezi ndidi zilandelayo:
- A Imixhentso nemigajo
B lintsoni namaqhina
C A no B (1)



6.2 IINTSOMI

6.2.1 Khetha eyona mpendulo ilungileyo. Intsomi:

- A Libali elingeyonyani
- B Yintetho engeyonyani
- C Libali (1)

6.2.2 Xela imisebenzi yentsomi ibe MITHATHU. (3)

6.2.3 Zazibaliswa ngubani iintsomi kudala?

- A Ngutitshala
- B Ngutatomkhulu
- C Ngumakhulu (1)

6.3 AMAQHINA

6.3.1 Chonga indlela yokuvula iqhina.

- A Kwathi ke kaloku
- B Qashi-qashi
- C Ngaminazana ithile (1)

6.3.2 Adla ngokwenziwa ngoobani amaqhina? (1)

6.3.3 Chonga impendulo yeqhina ngalinye kwizibiyeli:

- (a) Ndinamadoda am mabini, awela nokuba umlambo sowuzele kangakanani. (Ziindlebe, ngamehlo) (1)
- (b) Ndinanto yam ithunga iindonga zidibane. (yinaliti, yifotsholo) (1)

6.4 AMAQHALO

Chonga igama elifanelekileyo kula akwizibiyeli:

6.4.1 Isiziba (sibonwa/siviwa) ngodondolo. (1)

6.4.2 (Idada/Iqaqa) aliziva kunuka. (1)

6.4.3 Inyathi ibuzwa (kwabaphambili/kwabayaziyo). (1)

6.4.4 Intaka (ekhala/evuka) mva ikholwa zizagweba. (1)



6.5 **IZACI**

Tshatisa u-A no B ngendlela eyiyo ku-A luludwe lwezaci, ku-B ziintsingiselo zezaci.

A – IZACI		B – INTSINGISELO	
6.5.1	Inyoka nesele	(a)	Isandla sasekhohlo
6.5.2	Isisele senyathi	(b)	Imvula ena kancinci kakhulu
6.5.3	Amathe empukane	(c)	Umntu othanda ukulinganisa iimpahla zabanye abantu
6.5.4	Ukuba yimbulu	(d)	Umntu olumkileyo
6.5.5	Isandla semfene	(e)	Izinto ezingavaniyo

(5)
[20]

AMANQAKU ECANDELO D: 20

AMANQAKU EWONKE: 120

