



education

Department:
Education
REPUBLIC OF SOUTH AFRICA

**NATIONAL
SENIOR CERTIFICATE**

IBANGA 12

ISIXHOSA ULWIMI LWESIBINI OLONGEZELELWEYO (SAL)

IPHEPHA LOKUQALA (P1)

NOVEMBA 2008

AMANQAKU: 120

IXESHA: 2 iiyure

Olu viwo lunamaphepha ali-17.



IMIYALELO

1. Eli phepha lemibuzo linamacandelo AMANE angala:
 - ICANDELO A: Uvavanyo lokuqonda (30 amanqaku)
 - ICANDELO B: Ushwankathelo (10 amanqaku)
 - ICANDELO C: Ukusetyenziswa kolwimi (60 amanqaku)
 - ICANDELO D: Uncwadi (20 amanqaku)
2. Phendula YONKE imibuzo.
3. Bhala icandelo ngalinye kwiphepha ELITSHA uze ukrwele umgca ekupheleni kwecandelo NGALINYE.
4. Shiya umgca emva kwempendulo NGANYE.
5. Bhala ngokucocekileyo nangokucacileyo.
6. Landela imiyalelo ngocoselelo.
7. Bhala iimpendulo zakho ngokuchanekileyo ngokwendlela yokunombola esetyenzisiweyo kwiphepha lemibuzo.
8. Qwalasela upelo nolwakhiwo lwezivakalisi.



ICANDELO A: UVAVANYO LOKUQONDA**UMBUZO 1****ISICATSHULWA A**

- 1.1 Funda esi sicutshulwa sihamba nomfanekiso waso ngononophelo uze uphendule imibuzo elandelayo.



Themba: Molo Lulama.

Lulama: Molo nawe Themba. Kutheni wandijonga ngolu hlobo?

Themba: Ndjonge indlela omhle ngayo. linwele zakho zintle.

Lulama: Tyhini! Nam ndijonge lo mnqwazi wakho.

Themba: Ndingwenela ukuthetha nawe sisobabini. Ucinga ukuba singaya phi?

Lulama: Masiye kwindawo epholileyo ngasemlanjeni. Apha ehlotyeni kubetha umoya opholileyo. Kukho imithi nengca eluhlaza. lintaka zicula kamnandi.

Themba: Kulungile sithandwa. (*UThemba utsala uLulama kuba ufuna ukumphuza.*) Ndinga ukuba sikhe sityelele kwelinye iphondo, iKwaZulu Natal okanye iMpuma-Koloni ngezi holide zehlobo.

Lulama: Hayi, mna ndicinga ngenye indawo. Zininzi iindawo umntu anokuzicinga.

Themba: Unqwenela ukuya kweliphi iphondo sithandwa?



Lulama: Kutheni ufuna ukuba kukhethe mna kuqala nje? Kulungile ke, masiye kwiphondo leNtshona-Koloni. Lihle eli phondo ehlotyeni. Kukho intaba yeTafile. Siza kuzonwabisa elwandle. Amabhoma eediliya anomtsalane. Abakhenkethi bayalithanda eli phondo.

Themba: Ewe, masiye ukuze sidibane nabantu bezinye iindawo.

(Bahleli phantsi komthi beqhuba incoko yabo. UThemba ucela uthando kuLulama. UThemba umana ukusondela embamba. ULulama uyamsusa kuye. ULulama naye uyamthanda kodwa akafuni ukumxelela.)

Lulama: Musa ukungxama. Ndinike ithuba lokuyicinga le nto uyicelayo.

Themba: Uncede sithandwa, undinike impendulo eza kundonwabisa. Uyathembisa Lulama?

(ULulama umjonge ngamehlo anothando noncumo. Weva ubushushu begazi ngenxa yothando. Wakuva oku kufudumala entliziyweni, entloko, esiswini, nasemzimbeni wonke. ULulama ucinge nzulu ngoThemba. Wayecinga ukuba ingaba uyamazi kakuhle na uThemba lo. Kwafika amantombazana aze kukha amanzi. La mantombazana abuza imibuzo emininzi yogezo kuLulama. Abuza okwenzekayo phakathi kwakhe noThemba.)

IMIBUZO:

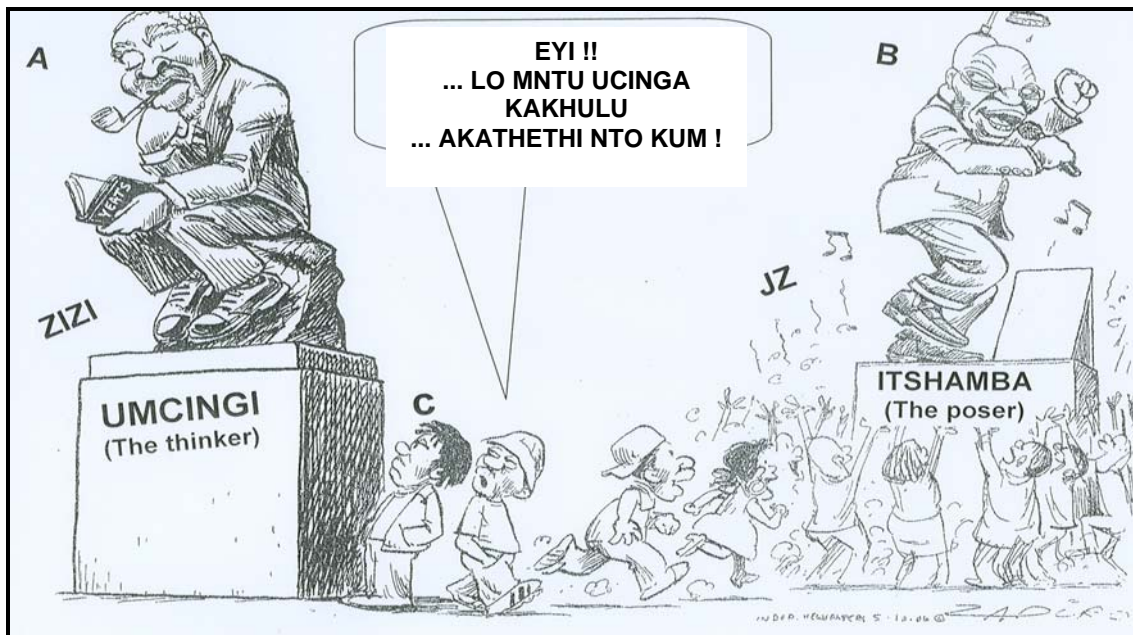
- 1.1.1 Ketha kwezi mpendulo zilandelayo eyona ichanekileyo uze uyixhase ngokujonga emfanekisweni. ULulama noThemba babonakala benjani? (2)
- A Bonwabile
B Banomsindo
C Baxhalabile
- 1.1.2 Aba bantu bakwindawo epholileyo. Nika izinto zibe MBINI ezibonisa oko. (2)
- 1.1.3 Yintoni eyayibangela ukuba uThemba atsale uLulama? (1)
- 1.1.4 Yitsho ukuba oku kungezantsi KUYINYANI na okanye BUBUXOKI. (1)
- (a) ULulama wavuma ukuphuzwa nguThemba. (1)
(b) ULulama noThemba babethandana. (1)
- 1.1.5 UThemba wayelindele impendulo yesicelo sakhe kuLulama. (1)
- (a) Wayecele ntoni? (1)
(b) Wayelindele impendulo enjani/ethini? (1)
(c) Ucinga ukuba uLulama uza kuphendula athini? (1)
- 1.1.6 Ngawaphi amalungu omzimba avakala efudumele kuLulama ngenxa yokuthanda kwakhe uThemba? Nika amalungu omzimba AMATHATHU. (3)



- 1.1.7 OoLulama bathetha ngawaphi amaphondo? Yitsho abe (3)
MATHATHU.
- 1.1.8 Ziintoni ezitsala abakhenkethi kwiphondo leNtshona-Koloni? (2)
- 1.1.9 Khetha phakathi kuka-(a) no-(b). Le ndawo bakuyo ooLulama ikufutshane:
(a) Nentaba
(b) Nomlambo (1)
- 1.1.10 Yintoni eyaphazamisa uThemba noLulama kwincoko yabo? (1)

ISICATSHULWA B: OKUBONWAYO

1.2 Jonga le khathuni, uze uphendule le mibuzo ilandelayo.



[Ithathwe kwi-Iso Lezwe, Disemba 2007]

IMIBUZO

- 1.2.1 Kutheni la madoda mabini ebekwe phezulu kunabanye abantu?.
Khetha kwezi mpendulo zingezantsi:
(a) Bafutshane
(b) Baziinkokheli (1)
- 1.2.2 Umntu A nomntu B abajongananga, omnye ujonge kwelinye icala nomnye kwelinye. Ucinga ukuba kutheni behleli ngolu hlobo? (2)



- 1.2.3 Indlela ahleli ngayo umntu A, imbonakalo yobuso bakhe, isandla ezantsi kwesilevu, zonke ezi zinto zibonakalisa ukuba:
- (a) Uyacinga
 - (b) Wonwabile
 - (c) Uyalila
- (1)
- 1.2.4 Kutheni umntu B elandelwa ngabantu abaninzi nje? (2)
- 1.2.5 Wenza ntoni umntu B? (1)
- 1.2.6 Umntu (D) othethayo apha emfanekisweni ucinga ntoni malunga nomntu A? (1)
- 1.2.7 Ucinga ukuba umntu D uza kulandela owuphi umntu? (1)
- 1.2.8 Jonga inkangeleko yobuso bomntu C. Lo mntu ucinga ntoni okanye uziva njani? (1)

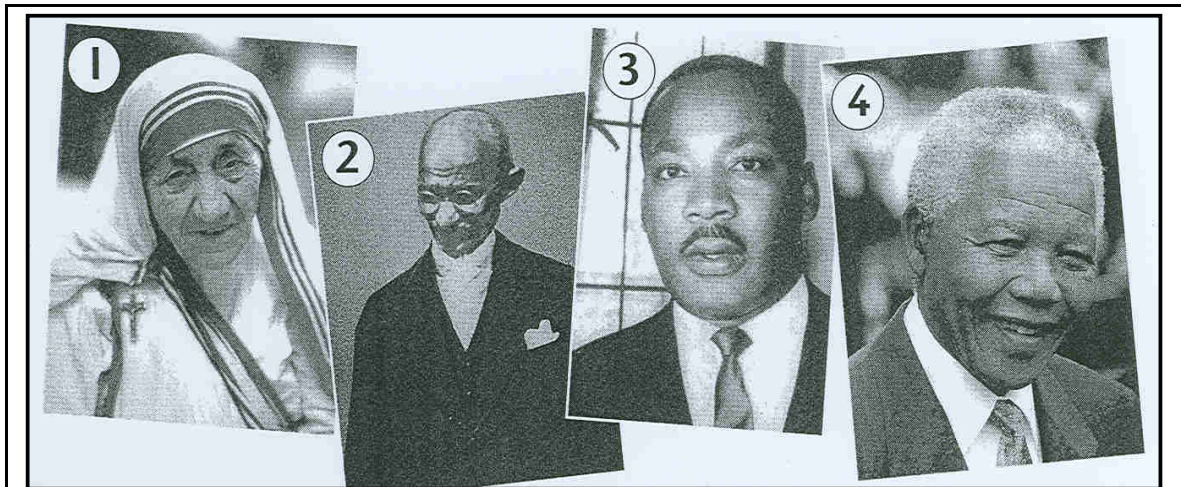
AMANQAKU ECANDELO A: 30



ICANDELO B: ISISHWANKATHELO**UMBUZO 2**

Funda esi sicutshulwa silandelayo sihamba nemifanekiso uze usishwankathele. Landela le miyalelo xa ushwankathela:

1. Funda ngemisebenzi yaba bantu abalandelayo: UMother Theresa, uGandhi, uMartin Luther King noTata uMandela.
2. Shwankathela esi sicutshulwa uthethe ngezi zinto:
 - (i) Thetha ngeenjongo zabo
 - (ii) Babesilwa njani?
 - (iii) Bafumana iingxaki ezinjani ebomini babo?
 - (iv) Zaba yintoni iziphumo zokulwa kwabo noRhulumente? (7)
3. Bhala ngezivakalisi ezipheleleyo. Sebenzisa ulwimi olufanelekileyo. (2)
4. Shwankathela ngamagama amalunga nama-40 ukuya kuma-50. Bhala inani lamagama owasebenzisileyo. (1)



UMother Theresa wayengatshatanga. Waqala ukusebenza e-Ireland eneminyaka eli-18 ubudala. Wasebenza nase-Indiya. Wayengumntu onothando. Wanceda abantu ababekwiimeko ezimbi. Ngo-1948 wavula isikolo kwindawo yabantu abahluphekileyo e-Calcutta. Wasebenza nabantu abagulayo, abangenabazali nezihlobo. Wasweleka ngo-1997.



UMohandas Gandhi wazalelwa e-Indiya. Wayeligqwetha. Walwela amalungelo ama-Indiya eMzantsi Afrika nase-Indiya. Wasebenzisa itoyitoyi ngaphandle kokulwa. Wanyanzela iBritani ukuba ibuyisele ilizwe lase-Indiya kubantu balo. Wasebenzela ukwakha ubuhlobo nokuhlalisana kakuhle phakathi kwamaHindu namaMoslem. Wasweleka ngo-1948.

UMartin Luther King wayengumfundisi waseMelika. Walwela amalungelo abantu abamnyama baseMelika. Abamnyama babephila kanzima. Wayefuna ukuba uRhulumente abaphathe kakuhle abantu. Wayefuna uxolo phakathi kwabamhlophe nabamnyama. Wathetha noRhulumente ngendlela yokuphatha abantu kakuhle. Abantu batoyitoya bengazikhweli iibhasi. Wabhubha ngo-1968 phambi kokubona onke amaphupha akhe ephumelele.

UNelson Rholihlahla Mandela wabanjwa ngo-1963 nguRhulumente wocalucalulo. Wayelwela amalungelo abantu abamnyama baseMzantsi Afrika. Wahlala iminyaka emininzi entolongweni eRobben Island. Wasebenza noMongameli uFW de Klerk, ukuphelisa ucalucalulo. Ukuphuma kwakhe entolongweni wenza uxolo phakathi kweentlanga. Wenza ukuba kubekho inkululeko. Wanyulwa waba nguMongameli wokuqala omnyama woMzantsi Afrika. Ube yinkokheli ethandwa kakhulu jikelele. Uvule ingxowa yokunceda abantwana 'iMandela Childrens' Fund'.

Umsebenzi wabo wawungekho lula kuba babesukelwa ngamapolisa bebanjwa bavalelwe ezintolongweni.

AMANQAKU ECANDELO B: 10



ICANDELO C: UKUSETYENZISWA KOLWIMI**UMBUZO 3**

- 3.1 Phinda ubhale esi sicutshulwa silandelayo uze ulungise iziphene nolwimi olungamkelekanga.
- lindwendwe yalungiselelwa idawo yokulala. ingaba siziphatha kakhuhle iindwendwe kweli (5)
- 3.2 Bhala ezi zivakalisi kwisininzi.
- Umzekelo: Isikolo siyavalwa.
Ipendulo: Izikolo ziyavalwa.
- 3.2.1 Umntwana uyabaleka. (2)
3.2.2 Inja iyakhonkotha. (2)
- 3.3 Fakela izimamva ezifanelekileyo. Khetha kwezi. Bhala igama kuphela.
- [- eka, -ela-isa]
- Umzekelo: Utitshala ufunda abafundi.
Ipendulo: Utitshala ufundisa abafundi.
- 3.3.1 Utata uhamba abafundi besikolo ngemoto. (1)
3.3.2 Lo mntu uyathanda kakhulu. (1)
- 3.4 Izakhi ezikrwelwe umgca ngaphantsi zibonisa ntoni kwezi zivakalisi zilandelayo? Khetha kwezi:
- (i) Isini
(ii) Ukuzalana
(iii) Ubuncinane
- 3.4.1 Sityale imithana emininzi esikolweni. (1)
3.4.2 Umfundisikazi onobubele uyathandeka. (1)
- 3.5 Bhala igama elifanelekileyo kuphela elikwizibiyeli (...).
- 3.5.1 Indoda (fika) namhlanje. (1)
3.5.2 Isikolo (phuma) ngentsimbi yesibini. (1)
3.5.3 Amanzi (shushu). (1)



3.6 Bhala ezi zivakalisi kwixesha elizayo.

Umzekelo: Umntwana (uyatya).

Impendulo: Umntwana uza kutya.

3.6.1 Abantu (bafika) bephethe impahla. (1)

3.6.2 Ixhego (litya) isonka. (1)

3.6.3 Inkwenkwe (idlala) ibhola. (1)

3.7 Khetha igama elifanelekileyo kula magama akwizibiyeli uvale izikhewu kwizivakalisi ezilandelayo. Bhala igama elifanelekileyo kuphela.

[bona; ezikamama; esona; oku; ezona; eliya]

3.7.1 ... bahamba becula. (1)

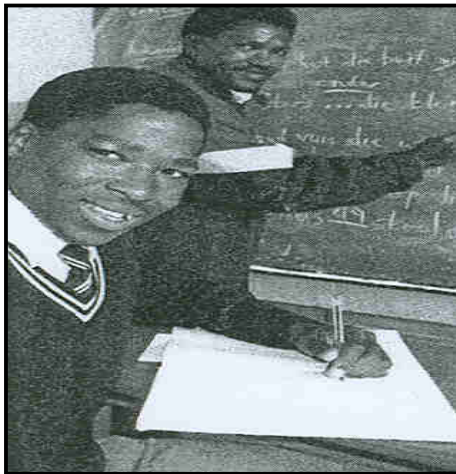
3.7.2 Ndithanda ... kutya kumnandi. (1)

3.7.3 Ufuna ... silula isifundo. (1)

3.8 Fakela izalathandawo ezifanelekileyo kwezi zivakalisi zilandelayo. Bhala igama kuphela.

Umzekelo: Umama ungena (indlu).

Impendulo: Umama ungena endlwini.



3.8.1 Utitshala ubhala (ibhodi). (1)

3.8.2 U-Ayanda ubhala (incwadi). (1)

3.8.3 U-Ayanda uyamamela kutitshala wakhe (isikolo). (1)



3.9 Khetha kumagama owanikiweyo uvale izikhewu. Bhala igama kuphela.

[yaka; ntsho-o; qhwa; tu]



- 3.9.1 Wathula ... uSipho kuba wayediniwe. (1)
 3.9.2 Ibhathi kaSipho yayiluhlaza (1)
 3.9.3 Ikhephu limhlophe ... entabeni. (1)

3.10 Bhala ezi zivakalisi kwimo elandulayo.

Umzekelo: Umntwana uyatya.

Impendulo: Umntwana akatyi.

- 3.10.1 UNomsa ufunda incwadi yamabali. (1)
 3.10.2 Umama uyakwazi ukucula. (1)
 3.10.3 Ndiyifundile incwadi. (1)
 3.10.4 Indoda yathenga imoto. (2)

3.11 Sebenzisa la magama mabini kwisivakalisi.

Umzekelo: Indoda – umfazi

Impendulo: Indoda nomfazi baya edolophini.

- 3.11.1 Intombazana nenkwenkwe (1)
 3.11.2 Inja nekati (1)

3.12 Phinda ubhale esi sivakalisi ngendlela elungileyo.

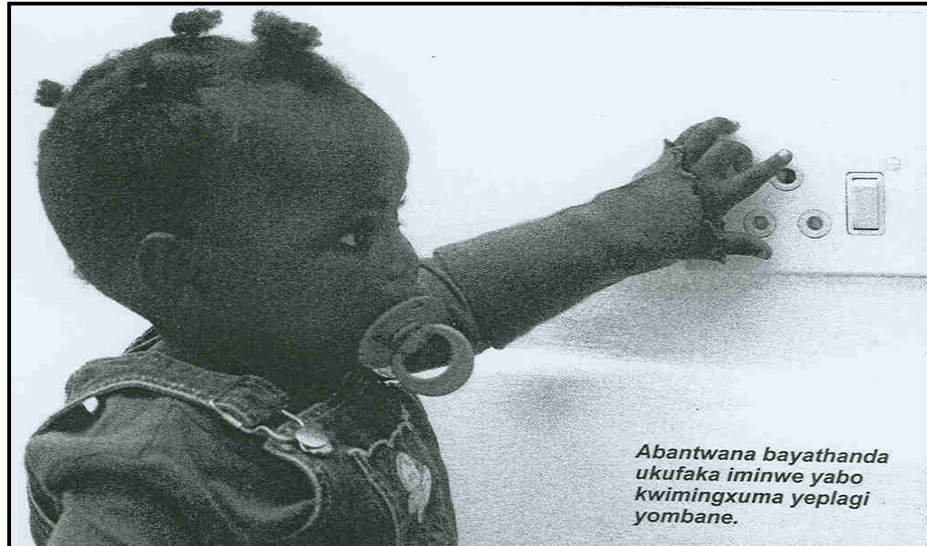
idami Umntwana uncanca (1)



3.13 Khetha isikhuzo esifanelekileyo kwizibiyeli (...). Bhala isikhuzo kuphela.

3.13.1 (Heke!, Yhoo!) umntwana uza kutsha ngumbane. (1)

3.13.2 (Owu!, lw-u-u!) aluseluhle ngako olu sana. (1)



3.14 Dibanisa ezi zivakalisi zibini ngokusebenzisa izihlanganisi ezifanelekileyo. Khetha kwezi:

[kuba; noko; ukuba; ukuze; nangona; kodwa]

3.14.1 Ndiyazi. Ulisela elidala. (1)

3.14.2 Ndiyaya esikolweni. Ndifuna ukufunda. (1)

3.14.3 Usazifihla. Ndikubone kakuhle. (1)

3.15 Funda izivakalisi ezilandelayo uze ubhale izifinyezi zamagama abhalwe ngqindilili.

Umzekelo: Kufike u**Gqirha** omtsha esibhedlela.

Impendulo: uGq.

3.15.1 **UMnumzana** Hlela ufundisa kwisikolo samabanga aphantsi. (1)

3.15.2 **Inkosikazi** yakhe yaphumelela ekubalekeni. (1)

[43]



UMBUZO 4

4.1 Jonga lo mzekelo uze uphendule umbuzo olandelayo.

Umzekelo: "Ndifunda incwadi", utshilo uThemba.

Impendulo: UThemba uthe ufunda incwadi.

(i) "Ndisadlala ibhola", utshilo uNomsa.

Sibhale kwakhona esi sivakalisi uqale ngolu hlobo:

UNomsa uthe ...

(2)

4.2 Funda esi sicutshulwa singasezantsi, ujonge nomfanekiso, uze uphendule imibuzo elandelayo.

I-OMO yisepha yokuhlamba enamandla. Icoxa iimpahla kakuhle kakhulu. Le sepha ayitshisi izandla. Kule sepha kususwe iikhemikhali. Isusa ukungcola empahleni. Ixabiso layo liphantsi. I-**OMO** yimveliso esemgangathweni ophezulu. Ukuba umntu unombuzo angafowunela kule nombolo: 086-0572-908.

4.2.1 Kutheni umntu engathanda ukuthenga i-**OMO**? Bhala izinto EZIMBINI.

(2)

4.2.2 Kutheni besebenzise umfanekiso womntu ongumama kule ntengiso?

(2)

4.2.3 Kutheni igama i-**"OMO"** libhalwe ngamagama amakhulu kulo mfanekiso ungentla?

(1)

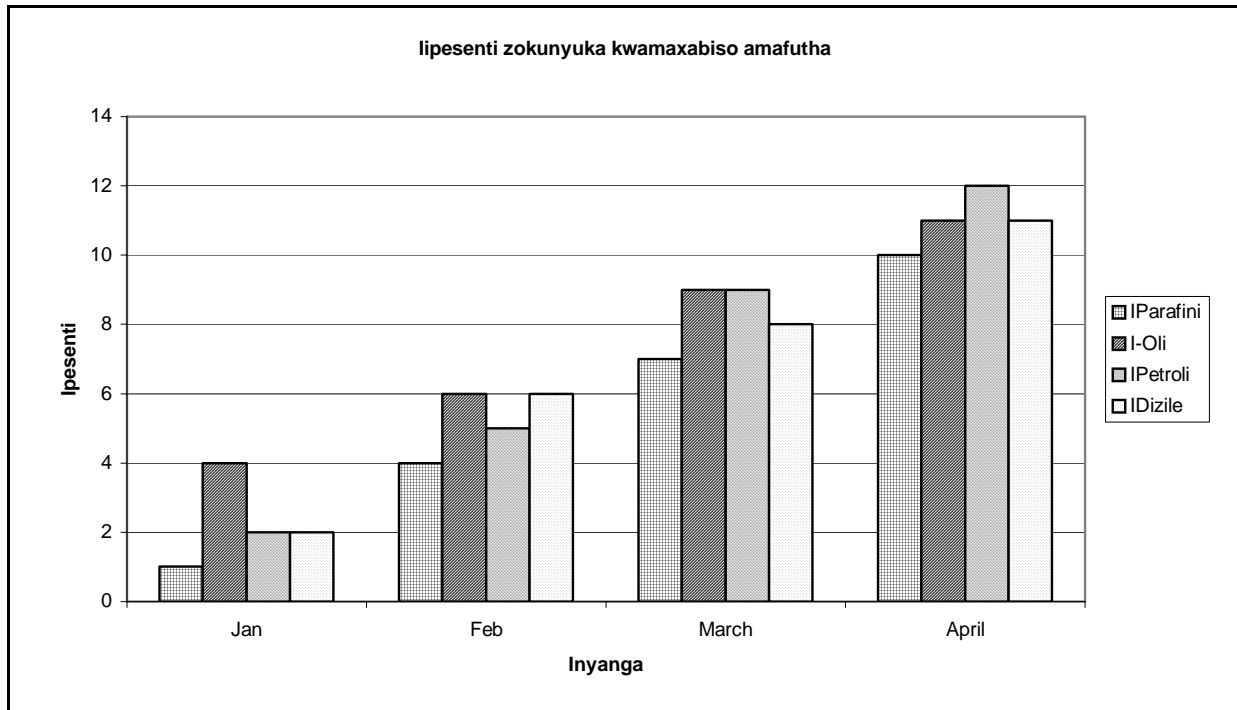
4.2.4 Uncedo singalufumana ngokufowunela kweyiphi inombolo?

(1)



4.2.5 Khetha igama elibolekiweyo kule ntengiso. (1)

4.3 Phendula imibuzo usebenzise le grafu ilandelayo.



4.3.1 Yeyiphi inyanga eneepesenti eziphezulu zokunyuka kwepetroli?

4.3.2 Inyuke ngeepesenti ezingaphi i-Petroli phakathi kukaJanuwari noAprili? Khetha kwezi mpendulo zilandelayo: (1)

(a) 2,5

(b) 10

(c) 6,5

(1)

4.3.3 Ngawaphi amafutha aneepesenti eziphezulu kwinyanga kaJanuwari? (1)

4.3.4 Uyavumelana nam xa ndisithi ubomi babathengi buza kuba lula kwixesha elizayo? Utsho ngoba kutheni? (2)

4.4 Khetha elona gama lifanelekileyo kulawo akwizibiyeli (...). Bhala igama kuphela.

4.4.1 Ewe! Madoda yakhani (amandlu; izindlu) esixekweni. (1)

4.4.2 (Xa; Nxa) ungafuni kusebenza kufuneka uhambe kulo mzi kabawo. (1)

4.4.3 linkuni (ziyanetha; ziyana) phandle zingenise endlwini. (1)

[17]

AMANQAKU ECANDELO C: 60



ICANDELO D: UNCWADI

KwiCandelo makuphendulwe UMBUZO 5 okanye UMBUZO 6.

UMBUZO 5**AMATHUNZI OBOMI ngu JJR Jolobe**

Funda ezi zicatshulwa zilandelayo ngenyameko uze uphendule imibuzo elandelayo ngesiXhosa. Bhala izivakalisi ezizeleyo.

- 5.1
- | | |
|-----------|--|
| UMADLOMO: | Ngxaki, mntwan'am, imeko yekhaya iya ibambi kakhulu. Siswele impahla, siswele nokutya. Ngoku siza kuswela nendawo yokuhlala. Ndisemva ngerente ... |
| UNGXAKI: | Mandiphume esikolweni, mama, ndifune umsebenzi ndincedise. |
| UMADLOMO: | Hayi, mntwan'am, khawunyamezele oku kwebanga lesithandathu kona ude ube nalo iphepha nokuba linye lokuqinisekisa ukuba unayo imfundwana. |
| UNGXAKI: | Ke, siya kuthini sakukhutshwa apha endlwini? |
| UMADLOMO: | Hayi, mntwan'am, uza kubuya ubone wena. Kuza kubuya kulunge wena ... |

- 5.1.1 UMaDlomo wagqiba ukwenza ntoni ukuze afumane imali yokubhatala iindleko zakhe? (2)
- 5.1.2 Yayinjani imeko apha kweli khaya ekuqaleni kweli bali? (1)
- 5.1.3 Lalisithini icebo likaNgxaki lokuncedisa unina? (2)
- 5.1.4 Bhala iingxaki zibe MBINI abadibene nazo uNgxaki nonina kweli khaya. (2)
- 5.1.5 Kutheni uMaDlomo emnqanda nje uNgxaki xa esiza necebo? (2)

- 5.2
- | | |
|-----------|--|
| UTHEMBA: | Mama, usuke wangathi ungumntu wasemzini. Andisakuboni kakuhle. |
| UMADLOMO: | Uthetha ntoni, Themba, ndilala apha ekhaya nje yonke le mihla? |
| UTHEMBA: | Imini yonke akukho. Wakufika ufika sewungxamile kufike nabantu kufuneke simke. Ikhubalo leli khaya akusasifundeli. Hayi, seyingathi asililo khaya lam eli. |
| UMADLOMO: | Kowu! Mntwan'am unyanisile ... |



- 5.2.1 UThemba uzalana njani noMaDlomo? (1)
- 5.2.2 UThemba akonwabanga. Bhala izinto ezimbini ezazimkhathaza. (2)
- 5.2.3 UThemba waqhuba njani esikolweni? (1)
- 5.2.4 UThemba wenza ntoni emva kokubanjwa kukaMaDlomo? (1)
- 5.3 **UMADLOMO:** Makabongwe uMdali onguyise weenkedama indoda yabahlolokazi. Sibulela nawe, titshala, ngokumthundeza kwakho kwisikolo semini neseCawa.
- 5.3.1 Ucinga ukuba zilungile okanye azilunganga izinto ezenziwa nguMaDlomo? Xhasa ngokufutshane iingcinga zakho. (3)
- 5.3.2 Uyahambisana noMaDlomo ukuba imfundo ibalulekile? Kutheni usitsho nje? (3)
- [20]**

OKANYE

UMBUZO 6

UMZALI WOLAHLEKO ngu GB Sinxo

Funda ezi zicatshulwa zilandelayo ngenyameko ze uphendule imibuzo elandelayo. Bhala izivakalisi ezizeleyo ngesiXhosa.

- 6.1 **KuseMonti.** Lixesha lokufika kukaloliwe ovela ngaseXesi. Esitishini kukho abafana ababini. Aba bafana bemi mganyana nale ndawo ima uloliwe kufutshane nevenkile enkulu yomLungu. Batshaya imidiza, kwaye banxibe ngohlobo olungaqhelekanga kumntu wasezilalini. Iminqwazi kubo bobabini ibhekiswe ecaleni, iibhatyi zimfutshane, ziphela ezimbanjeni, iibhulukwe zinkulu ngathi ziilokhwe. Aba bafana ngoonqal'intloko benene.
- 6.1.1 Ngoobani aba bafana? (2)
- 6.1.2 Yayiyintoni isizathu sokuba aba bafana beme esitishini? (1)
- 6.1.3 UWeziwe wehla kulo loliwe. Wayeze kwenza ntoni eMonti? (1)
- 6.1.4 UWeziwe wagqiba ukuhlala nabani eMonti? Wahlala njani naye phaya? Yayinjani imeko yabo? (3)
- 6.1.5 Wagoduka ekupheleni kwebali? Kwenzeka ntoni ngomfana oseMonti owayemthembise ngokumtshata encwadini? (2)



6.2

'Intle ilali yaseNjwaxa, iyazibetha zonke iilali zaseXesi ngobuhle. Umlambo iNjwaxa unqumla kule lali ... iNjwaxa enamanzi anjwaxa-njwaxa. Umlambo iTyhume wona uyijikelezile le lali ngathi ngumbhinqo wesilivere. Ezantsi kwale lali iTyhume lidibana nomlambo iXesi. IXesi eli ke ngumlambo asela kuwo onke amaGqunukhwebe kaKama. Iphucukile iNjwaxa; inemizi emihle kunene. Inamadoda aneempembelelo neemfundiso ezakhayo. Kambe ke naseNjwaxa, njengakwiindawo zonke, uSathana ukhona. Nabalandeli bakhe ke bakwakhona.'

- 6.2.1 Ilali egama liyiNjwaxa ikusiphi isithili? (1)
- 6.2.2 Nika isizathu esibangela ukuba umbhali afanise amanzi omlambo iTyhume nombhinqo wesilivere. (2)
- 6.2.3 Ngoobani abantu abasela kumlambo iXesi? (1)
- 6.2.4 Xela izinto zibe MBINI ephucuke ngazo ilali yaseNjwaxa. (2)
- 6.2.5 Ngokwalapha encwadini uyavumelana na nentetho ethi uSathana ukhona eNjwaxa? Nika isizathu sempendulo yakho. (3)
- 6.2.6 Ucinga ukuba yintoni eyenza ilali yaseNjwaxa ibe yeyona lali intle kuzo zonke iilali zaseXesi? (2)

[20]**AMANQAKU ECANDELO D: 20****AMANQAKU EWONKE: 120**