



basic education

Department:
Basic Education
REPUBLIC OF SOUTH AFRICA

UKUHLOLWA KWELIZWELOKE KOKUPHELA KOMNYAKA

IGREYIDI 1

ISINDEBELE ILIMI LEKHAYA

ISEDE 3: 2012 ISIBONELO

UMHLAHLANDLELA WOKUSETJENZISWA KWEEMBONISO ZE-ANA

1. Umbonomazombe ngokuvamileko.

Ukuhlolwa kwelizweloke komnyaka (ANA) kukuhlolwa okuphethako kwelwazi namakghono alindeleke bonyana abafundi bafanele ukube sele bawathuthukisile ekupheleni kelinye nelinye iGreyidi lo-1 ukuya kele-6 nele-9. Ukusekela ukuhlolwa kwabo kwesikolweni begodu nokuqinisekisa bonyana bazuza ukuzithemba okuthogekako ukuze bazibandakanye ngepumelelo ekuhlolweni kwangaphandle, isiqhema sabotitjhere nezazi kwezefundo benze iimboniso zemibuzo yokuhlola ezingasetjenziswa botitjhere eemfundweni zeLimi neemBalo. Imibuzo yeemboniso zokuhlola yenziwe yasuselwa emsebenzini wekharikhyulamu ohlanganisa amaThemu 1, 2 neye-3 womnyaka begodu nesihlahlubo esipheleleko esisitjengisa ngendlela ka-ANA senye nanye igreyidi sinikelwe. Iimboniso, ezifaka hlangana ukuhlahluba okutjengisako koku-ANA, kungezelela eenhlahlubeni okufanele zenziwe bafundi ngokuragako azijamiselele ukuhlola kwangamalanga.

2. Isakhiwo semibuzo yesiboniso

Iimboniso zitlanyelwe ukutjengisa amatheknikhi nofana iindlela ezihlukahlukene zokuhlola amakghono afanako namkha/nofana ilwazi. Njengokuthi, ilwazi elinqophileko lokumumethweko namkhaikghono lingahlolwa ngendlela yombuzo wokukhetha ipendulo eependulweni ezinengi (lapho abafundi bakhetha khona ipendulo enembako eependulweni ezinikelweko) nofana isitatimende (esifuna abafundi batlole ipendulo efitjhani nofana isigaba) nofana eminye imihlobo yemibuzo efuna bonyana abafundi bahlanganise amagama / isitatimende nemida, ukuqedelela imitjho nofana amaphetheni anikelweko, ukutjengisa iipendulo ngemigwalo nofana ngesiketjhi, njll). Ngalokho-ke abotitjhere bazokuthola imihlobo eminengi yemibuzo yeemboniso eyakhiwe ngeendlela ezihlukene nokho zibe zinqophe kokumumethweko begodu namakghono afanako. Ukuvezelwa emihlotjeni neendleleni zemibuzo ezihlukahlukene namkha iintayelakunikela abafundi ukuzithemba okudingekako ekuphenduleni ama-ayithemu wokuhlola ahlukahlukene.

3. Ukuhlanganisa nezinye iinsetjenziswa zokufunda nokufindisa.

Ngokuhlanganisa okudingekako, amanye amatheksti weemboniso neminye imibuzo kuhlanganiswe neencwadi zokusebenzela ezikhambelana negreyidi. Iimboniso zinqotjhiswe neemfuneko zesiTatimende seKharikhyulamu seLizweloke amaGreyidi R-12 (TKZ), Ukunikela kwesiTatimende somThetho-Kambiso weKharikhyulamu nokuHlola (TTKH), emagreyidini afaneleko ne National Protocol for Assessment. Imitlolo le, ukufaka hlangana nanyana ngiziphi ezinye ezinganikelwa sikolo, zinikela isisekelo seensetjenziswa esinohlelo esingarhelelwa abotitjhere ekuhloleni iimfundo nekwenzeni ukuhlola okuhleliweko.

4. Zingasetjenziswa bunjani iimboniso

Njengombana iimboniso zamagreyidi nezeemfundo sele zenziwe zaba yisede yinye ehlangeneko, utitjhere akukafaneli kobana anikele abafundi yoke isede bonyana bayiphendule ngesikhathi esisodwa. Utitjhere kufanele akhethe imibuzo ekhambelana nesifundo esihleliweko nanyana kukunini. Iimboniso zemibuzo ezikhethwe ngokuyelela ezikhamba ngamunye nofana imibuzo ekhamba ngeenqhema, ingasetjenziswa emazingeni ahlukahlukene wendlela yekambiso yokufundisa nokufunda elandelako:

- 4.1 Ekuthomeni kwesifundo njengokuhlolwa kweemboniso ukubona ubukghoni nokubhalelwa kwabafundi.

Ukuhlolwa kweemboniso (diagnosis) kufanele kuveze umbiko obuyako ebafundini nekuhlolweni kweemfundo ezifaneleko ezizokuveza ukungakghoni begodu kuqinise ubukghoni. Ukuhlolwa kweemboniso kunganikelwa njengomsebenzi owenziwa ekhaya ukubulunga isikhathi semilayelo ngetlasini.

- 4.2 Phakathi kwesifundo kungasetjenziswa ukuhlola okusisekelo (formative) ukuhlola bonyana abafundi bayathuthuka elwazini nemakghonweni anqotjhiweko njengombana isifundo siragela phambili bekuqinisekiswe bonyana akunamfundi osalelako.
- 4.3 Ekupheleni kwesifundo nofana kweemfundo eziimbalwa kwenziwe **ukuhlolwa ukuphethako** ukuhlola bonyana abafundi bathole ukuzwisisa okwaneleko begodu bayakghona ukusebenzisa ilwazi namakghono atholwe/afundwe eemfundweni esele ziqedliweko. Abafundi bafanele banikelwe **umbiko obuyako** njalo njalo, ngesikhathi utijhere athatha isiqu nto sokobana mhlawumbe kuneengcenywe zesifundo ezidinga ukubuyelelwa **ukuhlanganisa** ilwazi namakghono athileko.
- 4.4 Kiwo woke amazinga kufanele abafundi bavezelwe amathekniki ahlukahlukeneko wokuhlola nofana wokubuzwa, isib. ukuphendulwa kwemibuzo ema- multiple choice (MC), open ended (OE) nofana imibuzo ema-free-responses (FR), imibuzo eneependulo ezifitjhani, njll.

Lokha ukuhlola okuhlahlubako nokusisekelo kukufutjhani (formative test), ukuhlola okuphethako (summative) izokufaka imibuzo eminengi abafundi bebafike emibuzweni ezeleko (Full Test) kuzokuya ngomsebenzi owenziweko ngesikhathi esithileko. Into eqakathekileko kuqinisekisa bonyana abafundi babanesikhathi esaneleko sokuzijayeza ukuphendula imihlobo yokuhlola efana nendlela yokuhlolwa ko (ANA).

5. **Imemorandamu nofana umhlahlandlela wokutshwaya**

Isibonelo esifaneleko sependulo elindelekileko (imemorandamu) yomunye nomunye umbuzo weemboniso (exemplar) inikelwe begodu neyemibuzo ye-ANA. Abotijhere bafanele bayelele bonyana imemorandamu ingeze yaphelala. Imemorandamu inikela imithetho enabileko yeependulo ezilindelekileko begodu abotijhere bafanele baqalisise bebanikele ngokweendlela ezivumelekileko nangeendlela ezihlukeneko zeependulo ezilindelekileko ezinikelwa bafundi.

6. **Ukuqedwa kwekharikhyulamu**

Kuqakatheke khulu bonyana ikharikhyulamu yenziwe ngokuzeleko kelinye nelinye itlasi. Imboniso zelinnye nelinye igreyidi nesifundo azikajamiseleli yoke ikharikhyulamu. kukhethwe kwaphela ilwazi namakghono begodu nomsebenzi othatha amathemu 1,2 neye-3 yomnyaka lowo kwaphela. Ukuhleleka komsebenzi okufanele wenziwe ngokuya kwamathemu uvezwe incwadini yeTTKH.

7. **Isiphetho**

Umnqopho womNyango wezefundo kuthuthukisa amazinga nekhwalithi yokusebenza kwabafundi emakghonweni asisekelo welitheresi nenumeresi. IHKN ngenye yeendlela umNyango wezeFundo oyisebenzisako ukulandelela ukubona bonyana ukusebenza kwabafundi kuyathuthuka, bujame ndawonye nofana kutjingga phasi. Amadistrigi /iinyingi neenkolo kulindleleke bonyana zilekelele abotijhere bekunikelwe neesetjenziswa ezifaneleko ukuthuthukisa ukukghonakala kokufundisa nokufunda eenkolweni. Ngokusebenzisa iimboniso zika-ANA njengencenywe yeensetjenziswa zabo zokufundisa, abotijhere bazokulekelela abafundi bonyana bajayele iindlela namathekniki ahlukahlukeneko wokuhlola. Ngokusetjenziswa okufaneleko kweemboniso kufanele kulekelele abafundi bathole ilwazi nokuthuthukiswa kwamakghono afaneleko wokufunda ngokufaneleko bebasebenze ncono ekuhlolweni okulandelako kweenhlalubo zika-ANA.

1. **Funda indatjana bese uphendula imibuzo elandelako.**

UNina bekathabe khulu. Ugogo wakhe bekeza azokuvakatjha. Bekathanda bonyana ugogo wakhe eze azokuvakatjha. Ugogo wakhe bekadlala naye imidlalo. Namhlanje ugogo wakhe bekeza nomzala kaNina uBongi, naye azokuvakatjha. UNina bekazi bonyana kuzobamnandi.

1.1 **Khetha ipendulo ekungiyi.**

UNina beka ...

- A kwatile
- B thabile
- C lele
- D thakasile

1.2 **Zalisa ngegama elitj hodako emutj hweni ongenzasi.**

.....uyeza uzokuvakatjha.

1.3 **Zungelezela ipendulo ekungiyi.**

Ugogo kaNina/Ukghari kaNina bekeza zokuvakatjha.

1.4 **Tlola u-Iye nofana u-awa emudeni.**

UNina uthanda bonyana ugogo wakhe azokuvakatj ha.

.....

1.5 **Ngiyiphi imihlobo yemidlalo ebegade izokudlalwa nguNina nogogo wakhe?**

.....

2.1 **Ngubani ozokuvakatj ha? Zungelezela ipendulo ekungiyiyo.**

- A Ngubaba
- B Ngumma
- C Ngukghari
- D Ngugogo

2.2 **Zalisa igama elitj hodako emutj hweni ongenzasi.**

..... banoNina babomzala.

2.3 **Faka u- X ngebhoksini ekungilo.**

Ubaba uyavakatj ha	
Ugogo uyavakatj ha	

2.4 **Thalela u-iye nofana u-awa.**

Boke bazokuzwa ubumnandi. Iye/Awa

2.5 **Phendula umbuzo.**

Ngubani uBongi?

.....

3. **Qala isithombe bese uphendula imibuzo.**



Ngamalanga abentwana laba baya esikolweni. Babangani abazwana khulu begodu boke bafunda ngetlasini linye. Bahlala esitaradeni esisodwa. Bathanda ukukhamba baye esikolweni.

3.1 **Khetha ipendulo ekungiyi.**

Baya kuphi abentwana?

- A esikolweni
- B elwandle
- C eentolo
- D ekulaleni

3.2 **Zalisa ngegama elitj hodako.**

Abentwana laba boke ba.....

3.3 **Phendula ngo Iye nofana ngo Awa.**

Ingabe abentwana baya esikolweni malanga woke?

3.4 **Qedelela umutj ho.**

Abentwana bathabile ngombana.....

3.5 **Bakhamba kuphi abentwana?**

.....

4.1 **Khetha ipendulo ekungiyi.**

Bangaki abentwana abaya esikolweni?

- A bahlanu
- B babili
- C bane
- D bathathu

4.2 **Khetha ipendulo ekungiyi. Faka u-X ngebhoksini.**

Izolo abentwana baya esikolweni.	
Izolo abentwana baye esikolweni.	
Izolo abentwana uya esikolweni.	
Izolo abentwana bazokuya esikolweni.	

4.3 **Zalisa ngegama elitj hodako.**

Abentwana baya e.....

4.4 **Abentwana benzani ngeencwadi zabo?**

Abentwana

4.5 Thala umuda umadanise umutj ho nesiphetho ekungiso.

Abentwana bahlala	elwandle. efledzini. esitaradeni esisodwa
-------------------	---

5.1 Tlola amaledere la ngamagabdhahela.

a

j

h

5.2 Thala umuda umadanise neledere elligabdhahela.

B	d
D	u
U	b

5.3 **Tlola amagama la emideni.**

idromu

isikhwama

.....

.....

5.4 **Kopela umutj ho lo emudeni.**

Abesana badlala ibholo.

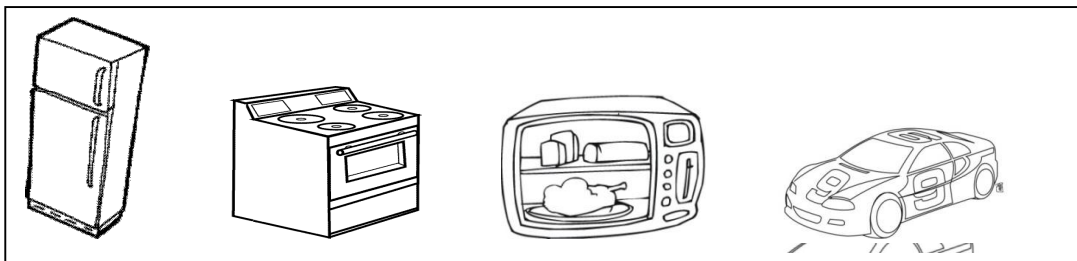
.....

5.5 **Tlola iinomboro zamagama la.**

likhomba

kune

6.1 **Zungelezela okukodwa okuhlukileko.**



6.2 Khetha igama uqedelele irhelo lamagama angenzasi.

izandla	incwadi	ipensela
---------	---------	----------

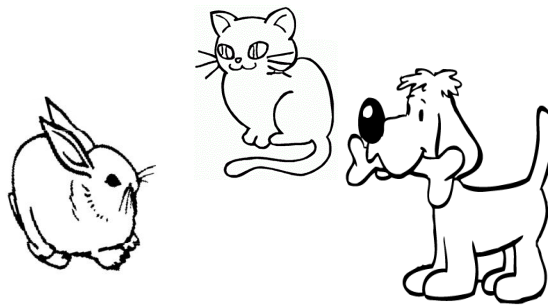
imilenze

iinyawo

imikhono

.....

6.3 Tlola amagama uqedelele irhelo.



Umqasa uqale i no

6.4 Qala amagama. Faka u-X emagameni amathathu asitjela ngephathi.

ikhekhe
iketlela
isipho
ibhaloni
i-ayisikhrimu
isimbi

6.5 Tlola amalanga weveke erhelweni.

USondarha
UMvulo
ULesi_____
ULesi_____
ULesi_____
ULesi_____
UMgqibelo

7.1 Gwala isithombe seendaba zakho. Tlola umutj ho utj ho bonyana kwenzeka ini esithombeni.

7.2 Lalela indatj ana efundwa ngutitj here.

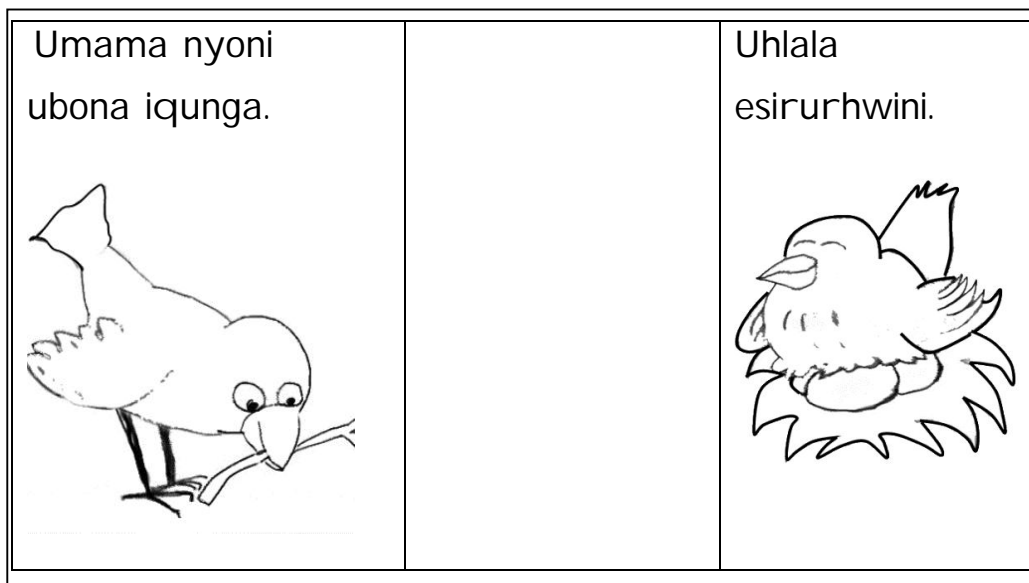
USana unesifuyosithandwa esitj ha. Yinj a. Igama lenj a le nguSibi. Ukhamba nayo ngamalanga. Umngani wakhe uThemba ukhamba naye. USibi uthanda ukubamba ibholo.

Gwala isithombe ngendatj ana le. Gwala uSibi, uSana noThemba.

7.3 Gwala isithombe ukhombise okulandelako.



7.4 Dweba isithombe uqedelele indatj ana.



8.1 Thala umuda umadanise amagama namagama asemitj hweni engenzasi.

hlaza

si

isirhwarhwa

isi

I sirhwarhwa sihlaza.

duda

uku

bathanda

ntazana

Abe

Abentazana bathanda ukududa.

8.2 Qala isithombe.



Zalisa ngegama uqedelele umutj ho.

Abentwana bayo

8.3 Sebenzisa amagama angenzasi wakhe umutj ho.

UThabo bangani bano abakhulu Senzo

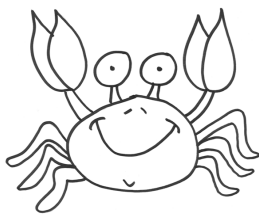
.....

8.4 Tlola umutj ho ngeendaba zakho.

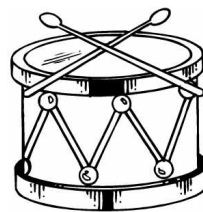
8.5 Qala isithombe. Tlola imitj ho emi-2 ngaso.



9.1 Zalisa ngetj hada elitj hodako.



i.....la



isi.....bhe

9.2 **Yakha bewuhlahlele amagama alandelako.**

9.2.1 isikhukhukazi-.....

9.2.1 isike + pe

9.3 **Thalela amagama anetj hada elifanako esiphent hweni.**

iflarha idromu isandla isirhwarhwa isilarha

9.4 **Sebenzisa amatj hada la wakhe ngawo amagama.**

9.4.1 bh

9.4.2 b

10.1 **Zalisa ngamatj hada atj hodako.**



10.2 **Madanisa amagama neenthombe. Thala umuda uwususe egameni uwuse esithombeni.**

ilampa

ibhratj hi



10.3 Tlola amabizo weenthombe lezi.



.....



.....

10.4 Zalisa ngegama elitj hodako. Khet ha ngebhoksini.

valo	wulu
------	------

I bhada inesi



Le yibholo ye

