



**basic education**

Department:  
Basic Education  
REPUBLIC OF SOUTH AFRICA

**LUHLOLO LWAVELONKHE LWEMNYAKA**

**LIBANGA 1**

**SISWATI LULWIMI LWASEKHAYA**

**ISETHI 3: SIBONELO**

# **TINKHOMBANDLELA TEKUSETJENTISWA KWETIBONELO TELUHOLO LWAVELONKHE LWEMNYAKA (ANA)**

## **1. Sibutsetelo lesivamile**

Luhlolo Lwavelonkhe Lwemnyaka (ANA) luhlolo lwelwazi nemakhono lekulindzeleke kwekutsi atfutukiswe kubafundzi ekupheleni kwemnyaka emabangeni 1- 6 kanye nelibanga 9. Kusekela luhlolo lwabo lolugcile etikolweni nekucinisekisa kwekutsi bafundzi batfola kutetsembe lokudzingekako kute bahlanganyele ngemphumelelo kuluhlolo lolusuka ngaphandle, litsimba labothishela kanye nabochwepheshe betifundvo bahlangene kute bahlanganise sibonelo semibuto yesivivinyo lesitawusetjentiswa ngubothishela kutifundvo tabo teLulwimi kanye neteTibalo. Sibonelo semibuto yesivivinyo leniketiwe, isuselwe emsebentini wekharikhulamu lofaka ekhatsi umsebenti wemaThemu 1, 2 kanye na 3 wemnyaka wesikolo kanye nesifanekiso sesivivinyo lesiphelele seLuhlolo Lwavelonkhe Lwemnyaka (ANA) welibanga ngalinye. Letibonelo, letifaka ekhatsi sifaniso sesivivinyo seLuhlolo Lwavelonkhe Lwemnyaka (ANA), tichibela luhlolo loluchubekako lolugcile etikolweni lokumele kwekutsi bafundzi bandlule kulo, letibonelo atiyitsatsi indzawo yeluhlolo loluchubekako.

## **2. Kwakheka kwetibonelo temibuto**

Letibonelo ticondize kubonisa emasu netindlela letehlukene tekuhlola emakhono kanye/nobe nelwazi. Uma ngabe lolunye lwazi lwalokucuketfwe nobe likhono kungahlolwa ngekusebentisa umbuto locuketse timphendvulo letinyenti (lapho umfundzi kumele akhetse imphendvulo lekunguyona mbamba kuleto letiniketiwe) nobe sitatimende (lesidzinga kwekutsi bafundzi babhale imphendvulo kuphela kumbe indzima) nobe letinye tinhlobo temibuto (ledzinga bafundzi kwekutsi bahlanganise emagama / titatimende ngemigca, kute bacedzise imisho leniketiwe nobe emaphethini, kukhombisa timphendvulo tabo ngemidvwebo nangemifanekiso, njll.). Ngakoke, uma bothishela nebafundzi batfola linani letibonelo temibuto leyakheke ngalokwehlukile kepha ibuta into yinye, kumele bavisise kwekutsi loko kwentiwe ngemabomu futsi bafundzi kumele bayiphendvule yokhe lemibuto yetibonelo. Kuveta ebaleni ngalokubanti tinhlobonhlobo temasu netindlela tekubuta, kuniketa bafundzi kutetsembe lokudzingekako kute babukane netivivinyo

## **3. Kuhlanganiswa naletinye tinsita tekufundza nekufundzisa**

Kute kube nekuchumana lokubalulekile, lamanye ematheksthi aletibonelo kanye nemibuto iye yahlanganiswa ngabomu neyeTincwadzi Temisebenti (Workbooks) lehambisana kahle nelizinga lalelo banga. Letibonelo tiphindze tihambisane netidzingo teSitatimende seKharikhulamu Savelonkhe (NCS) yemabanga R-12, lokutfolakala kuSitatimende Senchubomgomo yeKharikhulamu Nekuholo (CAPS) yemabanga akhona lafanele kanye ne National Protocol for Assessment. Yonke lemibhalo, seyihlangene naleminyane letfolakala esikolweni, yakha sisekelo lesinotsile setinsita lesilekelela bothishela ekuheleni tifundvo nasekuchubeni luhlolo loluhlelekile (kuhlolwa kwekufundza).

## **4. Tingasetjentiswa njani letibonelo**

Nanobe letibonelo telibanga kanye nesifundvo kubutselwe ndzawonye kwaba yisethi yinye leyimbumba lephelelisiwe, akukadzingeki kwekutsi thishela anikete bafundzi lomsebenti kutsi bawente sikhatsi ngasinye. Kumele thishela akhetse tibonelo temibuto lecondzene naloko lahlehlele esifundvweni sakhe ngalesikhatsi lesiniketiwe. Umbuto munye nobe linani leliphatsekako lemibuto yesivivinyo yesibonelo lekhetfwe nobe yatonyulwa ngekucaphelisisa, ingasetjentiswa etigabeni letahlukene tekuchubekisa kufundza nekufundzisa ngalendlela :-

4.1 Ekucaleni kwesifundvo njengesivivinyo seluhlololucwaningo kutfola emandla nebutsakatsaka lobukhona kumfundzi. Loluhlololucwaningo kumele luholele ekuniketeni satiso ngekushesha kubafundzi nasekusunguleni tifundvo letilungele kubasita kulobutsakatsaka losebubonakele bese kubacinisa emandla. Lesivivinyo semhlahlo singaniketwa bafundzi njengemsebenti wasekhaya kute kongeke sikhatsi seticondziso ekilasini.

4.2 Ngalesikhatsi kufundwa njenge tivivinyo letichubekako tekuhlola kwekutsi bafundzi bayatfutuka elwatini lolumiselwe kanye nemakhono njengoba sifundvo sichubeka kute kube nesiciniseko sekutsi akekho umfundzi losalela emuva.

4.3 Emaphetselweni esifundvo nobe luhla lwetifundvo njengesivivinyo sekuphela kwethemu kuhlola kwekutsi bafundzi batfole kucondza lokwenele futsi bangasebentisa lolwati nemakhono labawafolile esifundvweni nobe etifundvweni lesebaticedzile. Lesatiso lesiya kubafundzi kumele siniketwe ngekushesha ngalesikhatsi thishela asancuma kwekutsi ingabe kukhona yini kulesifundvo nobe tifundvo lapho kumele abuyele emuva khona kucinisa lwati nemakhono latsile.

4.4 Kuto tonkhe tigaba kuveta tindlela letahlukene tekuhlola nekubuta kubafundzi, sib. kuphendvula imibuto lenetimphelevulo letinyenti letiniketive (MC), imibuto levulekile ledzinga timphendvulo letahlukene (OE) nobe imibuto ledzinga nobe nguyiphi imphelevulo (FR), imibuto ledzinga timphendvulo letimfisha (SA), njll.

Nanobe sivivinyo seluhlololucwaningo nalesichubekako singaba sifisha ngekwelinani lemibuto lefakiwe, sivivinyo sekuphela kwethemu sitawufaka imibuto leminyenti kute kwakheke sivivinyo lesiphelele ngekuya kwemsebenti losewentiwe ngalesosikhatsi. Intfo lebalulekile kuba nesicininiseko sekutsi ekugcineni bafundzi batfole lifuba lelanelo lekutilungiselela ngekuphendvula tivivinyo letigcwele teluhlobo lwe sifanekiso seLuhlolo LwaVelonkhe Lwemnyaka (ANA).

## **5. Imemorandamu nobe tinkhombandlela tekumakha**

Luhlobo lwesibonelo sekuphendvula lesilindzelekile (tinkhombandlela tekumakha) siniketive kuleyo naleyo mibuto yesibonelo sesivivinyo yaphindze futsi yaniketwa kusifanekiso sesivivinyo seLuhlolo LwaVelonkhe Lwemnyaka (ANA). Kumele bothishela bakubeke etingcondvweni tabo kwekutsi angeke kwenteke kwekutsi imemorandamu ipheleliswe. Imemorandamu iniketa kuphela imitsetfo lebanti yetinhlobo tetimphelevulo letilindzelekile kantsi nabothishela kumele batibute ngalokujulile bese baniketa umvuzo kuloko lokukhetsiwe netingucuko tetimphelevulo letiniketive letemukelekako letivela kubafundzi.

## **6. Lokucukethwe yekharikhulamu**

Kubaluleke ngalokwedlulele kwekutsi ikharikhulamu yentiwe yonkhe ngalokugcwele kulelo nalelo likilasi. Tibonelo telibanga ngalinye kanye nesifundvo akukameli ikharikhulamu yonkhe. Tiyisampula nje yelwati nemakhono lasemcoka futsi emsebenti lowetiwe ngemathemu 1, 2, na 3 emnyaka wesikolo. Kuhleleka kwemsebenti lokumele wentiwe lophelele kumathemu esikolo ukhonjisiwe kahle emiculwini yeCAPS.

## **7. Siphetho**

Inhloso yeLitiko kutfutukisa emazinga nekhwalithi yekusebenta kwemfundzi kuhlolisisa emakhono lasisekelo sekufundza nekubhala kanye nekubala. Luhlobo Lwemnyaka LwaVelonkhe ngulelinye lithulusi lelisetjentiswa liLitiko kulandzela nekutfolela kwekutsi kusebenta kwebafundzi kukhombisa kutfutuko, kuma ndzawonye nobe kukhombisa kwehla. Tigodzi netikolo tilindzeleke kwekutsi tisekele bothishela tibuye tibanikete netinsita letidzingeleke kutfutukisa kufundza nekufundzisa lokuyimphumelelo etikolweni. Ngekusebentisa tibonelo te-ANA njengencenye yetinsita tabo tekufundzisa, bothishela batawulekelela bafundzi ekutseni batetayele letindlela nemasu lahlukene lasetjentiswako nakuhlolwa. Ngekusetjentiswa kahle kwetibonelo kutawukwenta kwekutsi bafundzi basitakale ekutfoleni lwati lolufanele futsi batfutukise emakhono langiwo ekufundza ngemphumelelo babuye basebente kancono kutivivinyo te-ANA letitawulandzela.

1. **Fundza lenzaba ubese uphendvula imibuto letawulandzela.**

Nozipho uj abulile. Namuhla ngobe gogo wakhe uyeta utovakasha. Umzala wakhe, Bongi utawuta naye. Gogo utawudlala imidlalo nabo. Batawudlala engadzini. Nozipho sewulindze kubona boBongi nagogo. Uyati kutsi batawutij abulisa.

1.1 **Dvwebela indilinga lenemphendvulo lengiyo.**

Gogo utawuta e... kaboNozipho.

- A sikolweni
- B khaya
- C klasini
- D sitolo

1.2 **Gcwalisa ligama lelingekho emshweni longentasi.**

Bongi na.....beta ekhaya kabo Nozipho.

1.3 **Dvweba indilinga egameni leliyimphendvulo lefanele.**

Batawudlala phakatsi/ngaphandle.

1.4 **Bhala Yebo nobe Cha emgceni.**

Nozipho naBongi batawudlala engadzini.....

1.5 **Batawudlala yiphi imidlalo ngaphandle boNozipho,gogo naBongi?**

.....

2.1 **Dvwebela indilinga lenemphendvulo lengiyo.**

Nozipho uj abulile ngobe gogo utawum . . .

A bita.

B sita.

C landza.

D vakashela.

2.2 **Gcwalisa ligama lelingekho emshweni longentasi.**

Bongi naNozipho batawudlala bati.....

2.3 **Faka luphawu X ebhokisini lelifanele.**

Nozipho uj abulile uma ...

gogo aya ekudzeni.	
gogo eta kutovakasha.	

2.4 **Dvwebela Yebo nobe Cha.**

Batawuj abula baphindze bahleke. Yebo/Cha

2.5 **Phendvula umbuto.**

Yini letawuj abulisa Nozipho?

.....

3. **Buka sit fombe uphendvule imibuto we-3 ne- 4.**



Onkhe emalanga labantfwana baya esikolweni. Bangebangani labakhulu futsi bafundza eklasini linye. Bahlala esitaladini sinye. Batsandza kuhamba ngetinyawo baye esikolweni.

3.1 **Dvwebela indilinga lenemphendvulo lengiyo.**

Bayaphi bantfwana? Baya e ...

- A sikolweni.
- B lwandle.
- C titolo.
- D phakhi.

3.2 **Gcwalisa ligama lelingekho.**

Bonkhe labantfwana bangeba..... labakhulu.

3.3 **Phendvula ngaYebo nobe Cha.**

Ngabe bantfwana bayagibela onkhe emalanga nabaya esikolweni? .....

3.4 **Cedzela lomusho.**

Bantfwana baj abulile ngobe ....

3.5 **Baya kuphi bantfwana?**

.....

4.1 **Dvwebela indilinga lenemphendvulo lengiyo.**

Bangaki bantfwana labaya esikolweni?

- A Basihlanu.
- B Batsatfu.
- C Bane.
- D Babili.

4.2 **Khetsa imphendvulo lengiyo. Faka luphawu X ebhokisini.**

I tolo umntfwana uya esikolweni.	
I tolo bantfwana baye esikolweni.	
I tolo bantfwana baya esikolweni.	
I tolo bantfwana batawuya esikolweni.	

4.3 **Gcwalisa ligama lelingekho.**

Bantfwana batfwele ema..... baya esikolweni

4.4 **Bentani bantfwana ngemabhuku abo?**

Bantfwana baya..... emabhukwini abo.

4.5 **Dvweba umugca ucondzanise umusho neligama lelisekugcineni kwawo.**

Bantfwana bahlala	elwandle.
	endlini.
	esitaladini sinye.

5.1 **Bhala letihlavu ngabo feleba.**

a ..... j ..... h .....

5.2 **Dvweba umugca ucondzanise tihlavu letibo feleba naletincane.**

B	d
D	u
U	b

5.3 **Tsatsela lamagama uwabhale emigceni.**

pheka \_\_\_\_\_ shisa \_\_\_\_\_

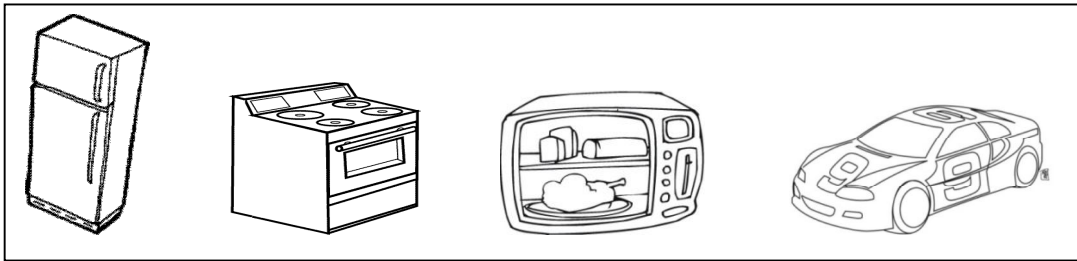
5.4 **Tsatsela lomusho uwubhale emgceni.**

Bafana badlala ibhola.

.....



6.1 Dvweba indilinga esit fombeni lesingahambisani naletinye.



Leligama lalesit fombe losikhetsile ungalifaka kuliphi likhasi lesichazamagama sakho?

.....

6.2 Khetsa ebhokisini ligama lelitawulandzela kusichazamagama sakho.



ami

baleka

fulela

.....

6.3 Bhala emagama ngekulandzelana lokuhleleke kahle nj engakusichazamagama.



I bhola

.....

.....

6.4 **Buka lamagama. Faka luphawu X emagameni la-4 laketa emva kweligama hlala kusichazamagama sakho.**

cola	
khetsa	
phuka	
bhala	
inja	
sitolo	

6.5 **Bhala emakhasini esichazamagama emagama la-4 lewutikhetsele wona.**

Mm	Nn	Ss	Tt
----	----	----	----

7.1 **Bhala umusho ngalokwentekile itolo.**

.....

**Dvweba sit fombe kukhombisa lokwentekile.**

7.2 **Lalela indzaba lefundvwa nguthishela.**

Sabelo unesilwane sakhe sasekhaya  
lesisha, yinj a. Libito lenj a nguSibi.  
Uhlala ahamba nayo onkhe emalanga.  
Uhamba nemngani wakhe Mancoba.  
Sibi utsandza kubamba ibhola.

**Bhala umusho ngendzaba lefundziwe ubese udvweba sit fombe kukhombisa lokwentekile.**

.....

7.3 **Bhala umusho kukhombisa lokwenteka esit fombeni.**

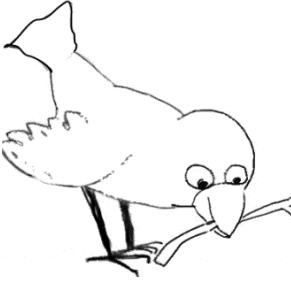

.....



**Dvweba sit fombe ebhokisini kukhombisa lokwentekile.**

7.4 **Bhala umusho kucedzela indzaba.**

.....

 <p>Make wenyoni ubona ligatj ana lesihlahla.</p>		 <p>Uhleli esidlekeni.</p>
--	--	---

**Dvweba sit fombe kukhombisa lokwentekako.**

8.1 **Dvweba imigca emabhokisini ucondzanise nemagama lasemishweni lengentasi.**

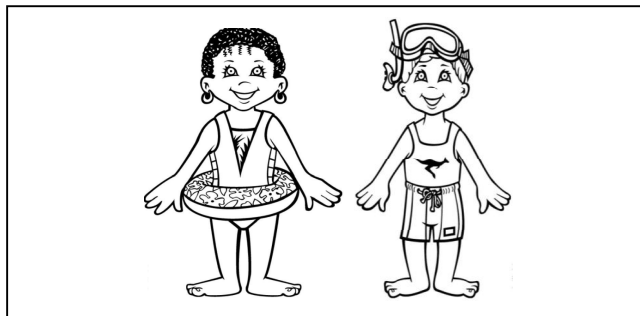
siluhlata      sicoco      lesincane

Sicoco lesincane siluhlata.

Ngebhola      badlala      bafana

Bafana badlala ngebhola.

8.2 **Buka lesit fombe.**



**Gcwalisa ligama ucedzele lomusho.**

Bantfwana lababili be.....

8.3 **Sebentisa emagama langentasi kwenta umusho.**

Mpho labakhulu babangani naThabo

.....

8.4 **Tibhalele wakho umusho.**

.....

Buka lesit fombe. Bhala imisho le-2 ngaso.

8.5



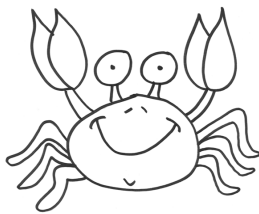
.....

.....

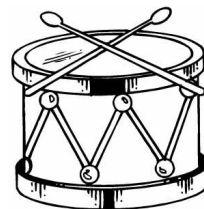
.....

.....

9.1 Gcwalisa umsindvo longekho.



in\_ \_ ala



si\_ \_ bhu

9.2 **Akha ubuye uhlahlele lamagama lalandzelako.**

sihlahla .....- .....- ..... la + la .....

9.3 **Dvwebela emagama laneticalo temisindvo lefanako.**

fika gibela hamba gula jika

9.4 **Sebentisa lemisindvo kubhala emagama.**

gc ..... sh .....

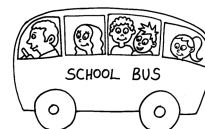
10.1 **Gcwalisa umsindvo longekho.**



li\_ati

in\_a

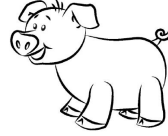
10.2 **Dvweba umugca ucondzanise ligama nesit fombe salo.**



ibhasi

ikepisi

10.3 **Bhala emagama aletit fombe.**



.....

.....

10.4 **Gcwalisa emagama langekho. Khetsa ebhokisini.**

libhodo      liphekisi



Leli li.....



Nali li.....