



basic education

Department:
Basic Education
REPUBLIC OF SOUTH AFRICA

NATIONAL SENIOR CERTIFICATE

LIBANGA 12

SISWATI LULWIMI LWESIBILI LWEKWENGETA (SAL)

LIPHEPHA LESIBILI (P2)

LWETI 2014

EMAMAKI: 80

SIKHATSI: 2 ema-awa

Leliphepha linemakhasi la-7.

TICONDZISO KULABAHLOLWAKO

1. Leliphepha lehlukaniwe TIGABA LETINTSATFU:
SIGABA A: Indzaba (40)
SIGABA B: Ematheksthi emibhalombiko lemidzana (20)
SIGABA C: Ematheksthi lamafisha emibhalombiko/laticukatsilwati (20)
2. Phendvula MUNYE umbuto esigabeni NGASINYE.
3. Bhala TONKHE timphendvulo ngeSiswati.
4. Cala LESO NALESO sigaba ekhasini LELISHA.
5. Hlela (Sib. libalavemcondvo, umdvwebo, ifloshadi, njll.) lungisa emaphutsa ubuye uhlele kabusha umsebenti wakho.
6. Luhlaka aluvele EKUCALENI kwaleyo naleyo theksthi.
7. Luhlaka aluvetwe ngalokucacile. Dvweba umugca lovundlile etikweluhlaka.
8. Uyelulekwa kutsi ucitse sikhatsi sakho lokungenani ngalendlela:
 - 60 emaminithi eSigabeni A
 - 30 emaminithi eSigabeni B
 - 30 emaminithi eSigabeni C
9. Tinombolo tetimphendvulo atihambisane naleto letisephepheni lemibuto njengobe tinjalo.
10. Nika leyo naleyo mphendvulo sihloko lesifanele.
11. Sihloko asinganakwa nakubalwa linani lemagama.
12. Bhala ngebunono nangesandla lesifundzekako.

SIGABA A: INDZABA**UMBUTO 1**

Bhala indzaba NGASINYE saletihloko letilandzelako ibe ngemagama langabi ngaphasi kwala-150 futsi angabi ngetulu kwala-180.

- 1.1 Mzukwana ngigubha lusuku lwekutsalwa kwami. [40]
- 1.2 Umdlali wakumabonakudze/wasemsakatweni lengimtsandzako. [40]
- 1.3 Ngate ngatitfolo tincwadzi tekushayela imoto. [40]
- 1.4 Leli liphupho lenginalo ngelikusasa lami. [40]
- 1.5 Khetsa SINYE saletitfombe letingentasi ubhale indzaba ngesihloko losicabangako.

1.5.1



[TFG, 19 Aphreli 2014]

[40]

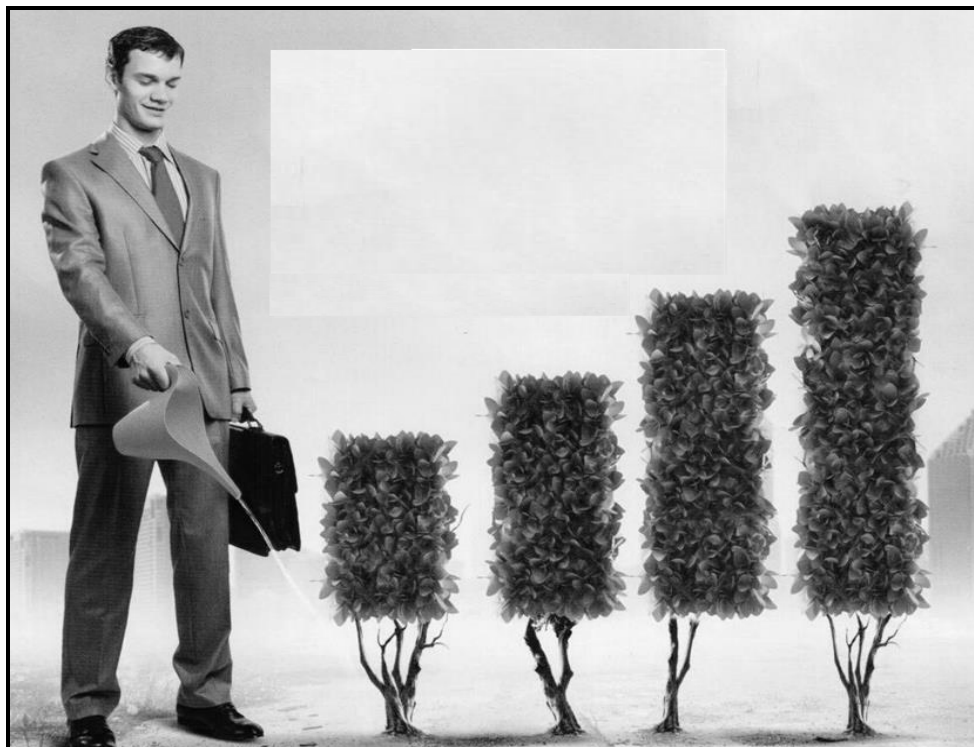
1.5.2



www.google.com/images/education

[40]

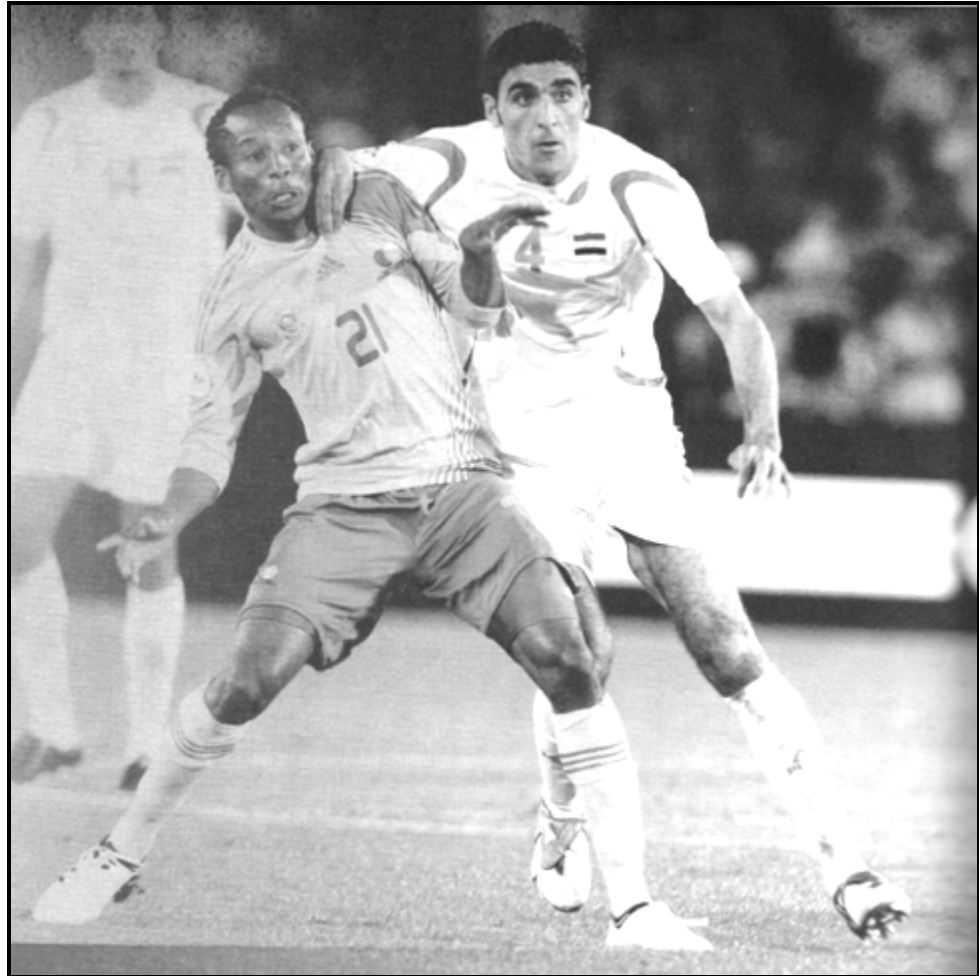
1.5.3



[Skyways, Mashii 2014]

[40]

1.5.4



[Kick Off, Febhruwari 2014]

[40]

SAMBA SESIGABA A:

40

SIGABA B: EMATHEKSTHI EMIBHALOMBIKO LEMIDZANA

Khetsa KUNYE kulokulandzelako ubhale ngako ngemagama langabi ngaphasi kwala-60 futsi angabi ngetulu kwala-80.

2.1 INCWADZI YEBUNGANI ('INFORMAL LETTER')

Bhalela sihlobo sakho lesihlala endzaweni lapho kunenyuvesi lofuna kuyofundza kuyo ucele indzawo yekuhlala njengobe uphase matekuletjeni.

[20]**2.2 INCWADZI YEMTSETFO ('FORMAL LETTER')**

Bhala incwadzi uyicondzise kumphatsisikolo, umbonge ngalomcimbi bekanentele wona esikolweni senu.

[20]**2.3 INKHULUMO ('SPEECH')**

Kutawube kunemcimbi wekuvalelisa umngani wakho loyofundza ngesheya kwetilwandle. Bhala inkhulumo lotayetfula kulowomcimbi.

[20]**2.4 INKHULUMOMPHENDVULWANO ('DIALOGUE')**

Bhala inkhulumomphendvulwano lapho bafundzi baveta tingoti ('side effects') tekusebentisa tinatfo tekucedza butfongo nawutadisha.

[20]**SAMBA SESIGABA B: 20**

SIGABA C: EMATHEKSTHI LAMAFISHA EMIBHALOMBIKO/LATICUKATSILWATI**UMBUTO 3**

Khetsa KUNYE kulokulandzelako ubhale ngako ngemagama langabi ngaphasi kwala-40 futsi angabi ngetulu kwala-60.

3.1 SIKHANGISI ('ADVERTISEMENT')

Unebhzinisi yesaluni lenemakhasimende lamancane. Bhala sikhangisi ukhangise ngaloko lokwentiwa kulesaluni.

[20]**3.2 IDAYARI ('DIARY')**

Nitawuvakashela endzaweni letsite nebangani bakho emalanga lamatsafu. Bhala idayari ukhombise lokutawentiwa ngelilanga **lekucala, lesibili nelesitsafu.**

[20]**3.3 TICONDZISO ('INSTRUCTIONS')**

Batali bakho bavakashe emalanga lamatsafu, bakushiye neticondziso tekutsi likhaya ungasale uligadza njani. Bhala leticondziso tibe lishumi.

[20]

SAMBA SESIGABA C: 20
SAMBA SAKO KONKHE: 80