



basic education

Department:
Basic Education
REPUBLIC OF SOUTH AFRICA

EMAMAKI

LUHLOLO LWAVELONKHE LWEMNYAKA 2013 LIBANGA 1 SISWATI LULWIMI LWASEKHAYA SIVIVINYO

EMAMAKI: 20

SIKHATSI: 1 LI-AWA

IPHROVINSI _____

IDISTRIKTHI _____

SIYINGI _____

LIGAMA LESIKOLO _____

INOMBOLO YE- EMISI (emadijithi layi- 9)

--	--	--	--	--	--	--	--	--

LIBANGA (Sib. 1A) _____

SIBONGO _____

LIGAMA _____

BULILI (✓)

UMFANA

INTFOMBATANE

LUSUKU LWEKUTALWA

C	C	Y	Y	M	M	D	D
---	---	---	---	---	---	---	---

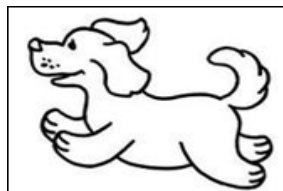
Lesivivinyo sinemakhasi la-9 ngaphandle kwelikhasi langaphandle.

Ticondziso tathishela

1. Fundzela bafundzi umbuto ngamunye ngalokuvakalako ungasheshisi.
2. Fundza umbuto kabili, ngalesikhatsi bafundzi balandzela emaphepheni abo.
3. Banike sikhatsi sekutibhalela ngekwabo timphendvulo etikhaleni letinikiwe.
4. Uma seabcedzile, chubeka ufundze umbuto lolandzelako.
5. Landzela leyo ndlela ute ufike embutweni wekugcina.
6. Sivivinyo sinemamaki lange- 20.
7. Sikhatsi sekubhala sivivinyo ngemaminithi lange- 60.
8. Yenta umsebenti wekutilolonga nebafundzi.

Imisebenti yekutilolonga.

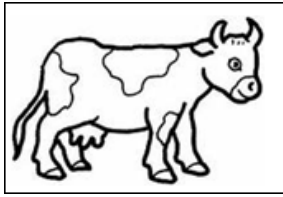
1. Biyela luhlavu lolungetulu kwemphendvulo lefanele.



A	B	C	D
likati	inkhomo	inkhukhu	inja

2. Faka luphawu (✘) ebhokisini lelifanele.

Loku ...

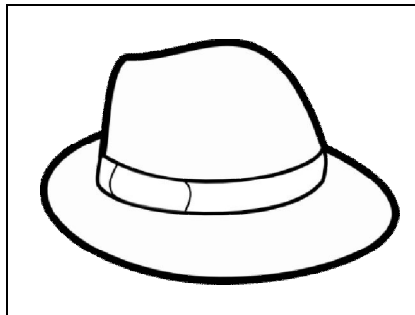
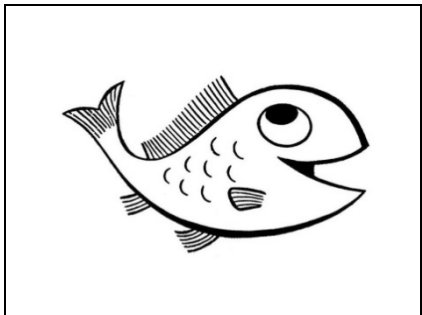


likati	
ligundvwane	
yinj a	
yinkhomo	X

Kulesivivinyo sakho utawuphendvula leminy e imibuto lefana nalena lesiyentile.

Sivivinyo sicala ekhasini lelandzelako.

1. Buka titfombe letingentasi. Bhala luhlavu lwekucala lwemsindvo wesitfombe ngasinye.

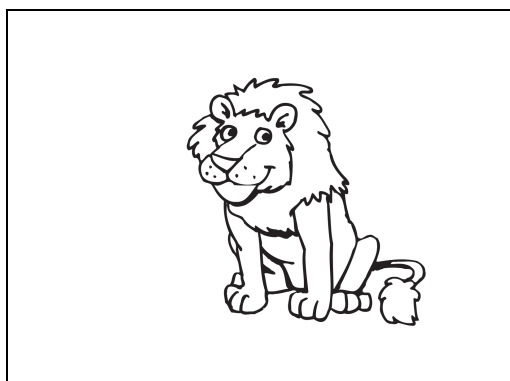


1.1

1.2

2. Bhala ligama lelifanele esitfombeni ngasinye. Khetsa kulamagama langentasi.

libhubesi	sibani	indlu	sandla
-----------	--------	-------	--------



2.1

2.2

3. Fundza indzaba bese uphendvula imibuto lengentasi.

Lisontfo futsi nelilanga libalele. BoLebu na-Ana bangani labakhulu. Bahamba bobabili baya ePaki. Ngasendleleni leya epaki kunesitolo. Esitolo babona emaswidi nemathoyisi. Bobabili baj abula kakhulu ngobe batawukhona kutsenga emaswidi nemashibusi lentiwe ngemazambane. Bawatsatsa bahambe nawo ephikinikini epaki. Lebu na-Ana bobabili baba nesikha tsi lesimnandzi.

3.1 Faka luphawu (✘) ebhokisini leliseceleni nemphendvulo lefanele.

Sihloko lesiyifanela kahle indzaba.

Lebu na-Ana baya epulazini.	
Lebu na-Ana badlala ekhaya.	
Lebu na-Ana baya ePaki.	

3.2 Faka luphawu (✘) ebhokisini leliseceleni nemphendvulo lefanele.

Lebu na-Ana bayelamana.

Yebo

Cha

3.3 Khombisa kulandzelana kahle kwetigameko endzabeni.

Bhala tinombolo (1-3) emabhokisini.

Baba nephikiniki epaki.	
Lebu na-Ana baya ePaki.	
Endleleni leya epaki kunesitolo.	

4. Biyela luhlavu loluseceleni nemphendvulo lefanele.

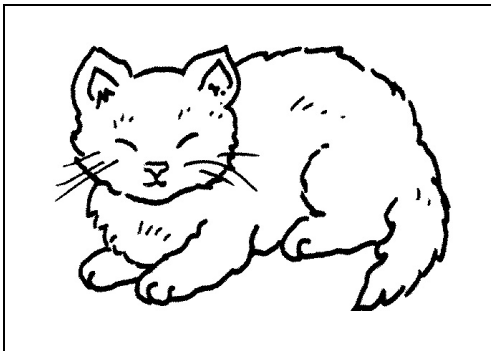
Bebaj abuliswe yini boLebu na-Ana?

Lebu na Ana baj abulile ngobe ...

- A babona inj a.
- B baya esikolweni.
- C batawutsenga titselo.
- D batawutsenga emaswidi.

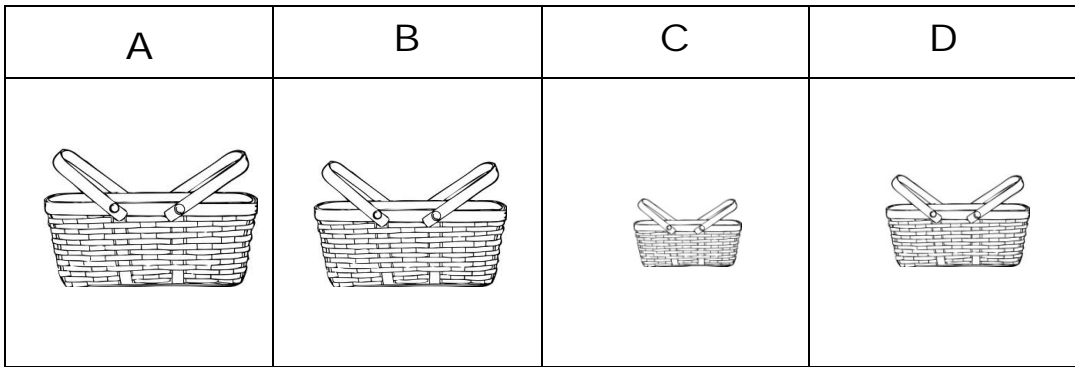
5. Buka sit fombe.

Gcwalisa ligama lelifanele.



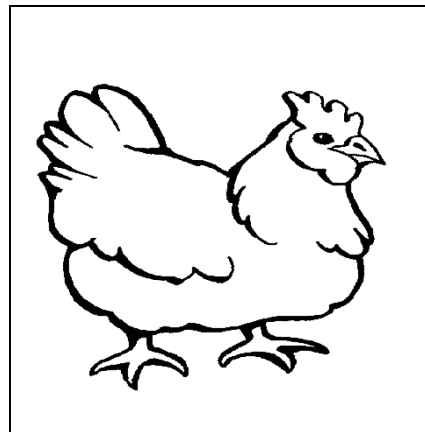
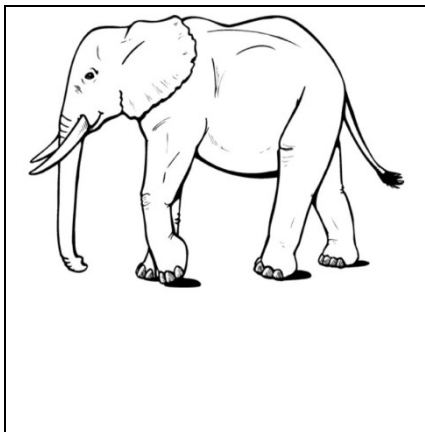
..... lilele.

6. Biyela luhlavu lolungetulu kwemantji **lencane**.



7. Dvweba umugca ucondzanise umsindvo lohambelana nesit fombe.

nj	ndl	hl	nkh
----	-----	----	-----



8. Phindza ubhale kahle umusho. Faka feleba nangci.
sibi ugij ima kakhulu

.....

9. Libito ligama lentfo. Khetsa libito lelifanele kute ucedzele umusho.

Inja	Indlu	Ingulube	Imbungulu
------	-------	----------	-----------

9.1 itsandza kudla ematsambo.



9.2 yincane.

10. Phendvula imibuto lelandzelako.

10.1 Bhala lamagama uwahlele ngekulandzelana kute wakhe umusho.

ufundza	Thishela	libhuku
---------	----------	---------



.....

.....

10.2 Buka sit fombe. Bhala imisho **lemibili** ngesit fombe.



A large rectangular box containing ten horizontal dotted lines for writing.

Samba: 20