



basic education

Department:
Basic Education
REPUBLIC OF SOUTH AFRICA

AMAMAKI

**UKUHLOLA KUKAZWELONKE KONYAKA NONYAKA 2013
IBANGA LESI-2 ISIZULU ULIMI LWASEKHAYA
ISIVIVINYO**

AMAMAKI: 30

ISIKHATHI: 1 IHORA

IPHROVINSI _____

IRIJINI _____

ISIFUNDA _____

IGAMA LESIKOLE _____

INAMBA YE-EMIS (9 amadijithi)

--	--	--	--	--	--	--	--	--

IKILASI (Isb. 2A) _____

ISIBONGO _____

IGAMA _____

UBULILI (✓)

UMFANA

INTOMBAZANE

USUKU LOKUZALWA

C	C	Y	Y	M	M	D	D
---	---	---	---	---	---	---	---

Lesi sivivinyo sinamakhasi ayi-13, ngaphandle kwekhava.

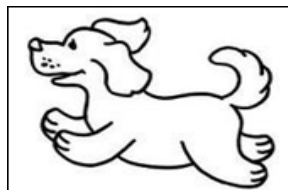
I miyalelo ka thisha

1. Fundela abafundi umbuzo ngamunye kuzwakale, ungasheshi.
2. Funda umbuzo okungenani kabili ngenkathi abafundi belandela befunda ezincwadini zabo.
3. Banikeze ithuba lokubhala izimpendulo ngokwabo ezikhaleni ezinikeziwe.
4. Uma sebeqedile, qhubeka ufunde umbuzo olandelayo.
5. Landela le ndlela kuze kuyofika embuzweni wokugcina.
6. Isamba samamaki esivivinyo sonke ngama-30.
7. Ubude besivivinyo imizuzu engama-60.
8. Yenza imisebenzi yokuzilungiselela nabafundi.

I misebenzi yokuzilungiselela

1. Kokelezela uhlamvu oluhambisana nesithombe.

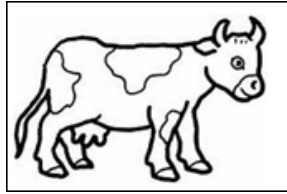
Lena ...



- A ikati
- B inkomo
- C isikhukhukazi
- D inj a

1. Faka uphawu (x) eduze kwebhokisi elinempendulo eFanele.

Le ...



ikati	
igundane	
inj a	
inkomo	x

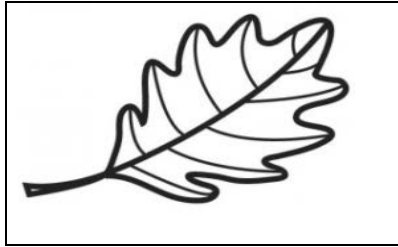
Kulesi sivivinyo uzophendula imibuzo eFana nalena osanda kuyenza.

I sivivinyo siqala ekhasini elilandelayo.

1. Phendula imibuzo elandelayo.

1.1 Kokelezela uhlamvu eduze kwebhokisi elinempendulo eFanele.

Leli ...



A impande

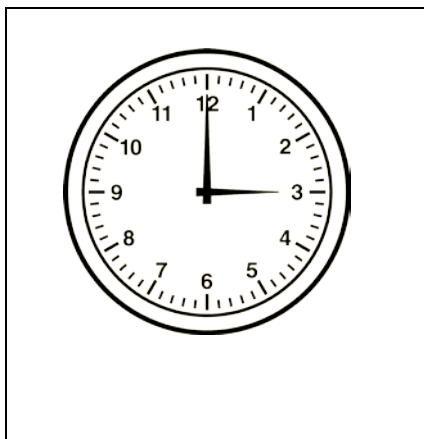
B isihlahla

C isiqu

D iqabunga

1.2 Bhala igama elihambisana nesithombe kulayini.

iwashi	ivolintshi	ivele	iwalethi
--------	------------	-------	----------



.....

1.3 Kokelezela uhlamvu oluseduze kwempendulo eFanele.

Ngi ... kumama uma sengiya esikoleni.

A bangula

B bungaza

C valelisa

D j abula

1. Funda indaba bese uphendula imibuzo 2 - 8.

Ngelinye ilanga kunomoya ntambama, uSipho wayeya esitolo. Wayegibele ibhayisikili lakhe, ehla ngomgwaqo. Wabona intuthu eningi iqhamuka ngasesikoleni. Wema, wehla enyuka ngaphandle kothango lwesikole. Wamemeza kakhulu ecela usizo, kodwa akekho owamuzwa ngoba umoya wawuvunguza ngamandla.

USipho wethuka washaywa uvalo. Amalangabi ayekhula esondela esakhiweni sesikole. Wacabanga ngokushesha, waphuthuma emzini kathisha wakhe. Wambikela ngomlilo, uthisha wabe esebiza abacimi-mlilo ngocingo. Abacimi-mlilo bawucima umlilo wangafinyelela ezakhiweni zesikole.

Bamhalalisela ngokuba yiqhawe uSipho abacimi-mlilo, base bemgibelisa elolini labo. Kwamj abulisa kakhulu uSipho lokho.

2. Faka uphawu (x) eduze kwebhokisi elinempendulo eFanele.

Khetha isihloko esifanele le ndaba.

I isihloko esifanele le ndaba ...

USipho uthanda uthisha wakhe.	
USipho uya esikoleni.	
USipho unebhayisikili.	
USipho uyiqhawe.	

3. Faka uphawu (x) eduze kwebhokisi elinempendulo eFanele.

Ubani owacima umlilo?

Umama kaSipho.	
Uthisha kaSipho.	
Abacimi-mlilo.	
I zingane.	

4. Qedela umusho.

Kwakunomlilo e

5. Khombisa ukulandelana kwezigameko endabeni. Sebenzisa izinamba 1-4 ukuveza ukulandelana kwezigameko.

Wabona intuthu esikoleni.	
Uthisha wakhe wabiza abacimi-mlilo.	
USipho wayeya esitolo.	
Wabikela uthisha wakhe.	

6. Faka uphawu (x) eduze kwebhokisi elinempendulo eFanele.
Amalangabi akhula ngokushesha, ngoba ...

uSipho wayegibele ibhayisikili.	
isango lesikole lalikhayiwe,	
uSipho wethuka.	
kwakunomoya ngalolo suku.	

7. Faka uphawu (x) eduze kwebhokisi elinempendulo eFanele.
Yini eyabangela abacimi-mlilo bagibeze uSipho elolini?
Abacimi-mlilo bamgibelisa elolini uSipho, ngoba ...

wabe eyiqhawe.	
wazicelela ukugibela.	
wayevilapha ukuhamba.	
wayeya esitolo.	

8. Phendula imibuzo elandelayo.

8.1 Nika isizathu sokuthi kungani uyithandile noma ungayithandanga le ndaba.

.....
.....

8.2 Yini eyayizokwenzeka ukube abacimi-mlilo abafikanga ?

.....
.....

9. Kokelezela uhlamvu olunempendulo eFanele.

I liphi igama elisho okufanayo nokuthi "wambikela?"

- A wamhleleka
- B wamazisa
- C wamkhalisa
- D wambuza

10. Bhala impendulo eFanele kulayini.

I gama eliphikisana nelithi 'eningi' elithi

11. Kokelezela uhlamvu eduze kwempendulo eFanele.

11.1 USipho wayefuna ukufu--isa udadewabo ngomlilo.

A ng

B nd

C th

D n

11.2 Abacimi-mlilo ba--ashisa abantu ngobungozi bomlilo.

A bh

B nw

C qw

D sw

12. Buka ikhalenda bese uphendula imibuzo.

uMbasa						
iSonto	uMso- mbuluko	uLwesi- bili	uLwesi- thathu	uLwesi- ne	uLwesi- hlanu	uMgqi- belo
	1	2	3	4	5	6
7	8	9	10	11	12	13
14	15	16	17	18	19	20
21	22	23	24	25	26	27
28	29	30				

Khetha igama elifanele emabhokisini angezansi.

Lwesine	Msombuluko	Lwesihlanu	Lwesithathu
---------	------------	------------	-------------

12.1 Inyanga kaMbasa iqala ngo

12.2 Olwesingaki usuku oluza ngemuva kweziyi-16 kuMbasa?

.....

12.3 Kobe kuwuluphi usuku mhla zingama-25 kuMbasa?

.....

13. Kokelezela uhlamvu eduze kwempendulo eFanele.

Abafana ibhola.

A badlala

B bahleka

C babaleka

D bagij ima

14 Phinda ubhale imisho ikhombwe inkathi. Qala ngegama olinikiwe.

14.1 Inkathi edlule.

USipho ukhanda ibhayisikili lakhe.

Izolo

14.2 Inkathi ezayo.

Abacimi-mlilo bafikile.

Kusasa

15. Phinda ubhale imisho engezansi.

15.1 Faka izimpawu zokuloba ezimbili ezifanele.

Usipho wayesithanda isikole sakhe

.....

15.2 Faka uphawu lokuloba olufanele

Sikuphi isigqoko sami wabuza umcimi-mlilo

.....

16. Qedela umusho ufake isabizwana esihambisana negama
elidwetshelwe emshweni ongezansi.

Abantu bayaxoxa. bayaxoxa.

17. Bhala imisho 5 - 8 ngesithombe osinikiwe ngezansi. Ubhekisise ukubhala izimpawu zokuloba, uhlelo kanye nesipelingi esifanele.



.....

.....

.....

.....

.....

.....

.....

.....

.....

.....

.....

.....

.....

.....

.....

I samba: 30