

2018

School Realities

Published March 2019
ISBN: 978-1-4315-3280-3
Enquiries: 012 357 3676

In 2018, there were 12 819 542 learners in ordinary public and independent schools (hereinafter collectively referred to as ordinary schools) in South Africa, who attended 25 154 schools and were served by 437 449 educators (see Tables 2 and 3). These data are from databases uploaded on Learner Unit Record Information and Tracking System (LURITS) and Provincial Data Warehouses as at August 2018. Approximately 99.9% of functional ordinary schools were uploaded. No imputation was done on the data. The figures in this publication are preliminary, and the final figures will be published in the more comprehensive Education Statistics in South Africa 2018.

Table 1: List of abbreviations

| | |
|---|-----------------------------------|
| ECD Early Childhood Development | LER Learner-Educator Ratio |
| ESR Educator-School Ratio | LSR Learner-School Ratio |
| FET Further Education and Training | SGB School Governing Body |
| GET General Education and Training | SNE Special Need Education |

Table 2: Number of learners, educators and schools in the ordinary school sector, by province, in 2018

| Province | Public | | | Independent | | | Public and Independent | | | | | |
|---------------------|-------------------|----------------|---------------|----------------|---------------|--------------|------------------------|------------------------|----------------|------------------------|---------------|------------------------|
| | Learners | Educators | Schools | Learners | Educators | Schools | Learners | As % of National Total | Educators | As % of National Total | Schools | As % of National Total |
| Eastern Cape | 1 775 602 | 59 324 | 5 210 | 65 178 | 3 289 | 199 | 1 840 780 | 14.4 | 62 613 | 14.3 | 5 409 | 21.5 |
| Free State | 688 976 | 22 640 | 1 117 | 18 190 | 1 101 | 70 | 707 166 | 5.5 | 23 741 | 5.4 | 1 187 | 4.7 |
| Gauteng | 2 109 890 | 69 180 | 2 077 | 292 686 | 20 062 | 759 | 2 402 576 | 18.7 | 89 242 | 20.4 | 2 836 | 11.3 |
| KwaZulu-Natal | 2 773 823 | 90 288 | 5 849 | 47 398 | 3 590 | 189 | 2 821 221 | 22.0 | 93 878 | 21.5 | 6 038 | 24.0 |
| Limpopo | 1 659 635 | 51 640 | 3 843 | 65 156 | 3 089 | 163 | 1 724 791 | 13.5 | 54 729 | 12.5 | 4 006 | 15.9 |
| Mpumalanga | 1 026 151 | 33 681 | 1 751 | 19 821 | 1 144 | 112 | 1 045 972 | 8.2 | 34 825 | 8.0 | 1 863 | 7.4 |
| Northern Cape | 291 461 | 10 227 | 545 | 3 878 | 376 | 37 | 295 339 | 2.3 | 10 603 | 2.4 | 582 | 2.3 |
| North West | 820 545 | 26 128 | 1 454 | 20 095 | 1 224 | 69 | 840 640 | 6.6 | 27 352 | 6.3 | 1 523 | 6.1 |
| Western Cape | 1 084 111 | 35 681 | 1 443 | 56 946 | 4 785 | 267 | 1 141 057 | 8.9 | 40 466 | 9.3 | 1 710 | 6.8 |
| South Africa | 12 230 194 | 398 789 | 23 289 | 589 348 | 38 660 | 1 865 | 12 819 542 | 100.0 | 437 449 | 100.0 | 25 154 | 100.0 |

Table 2 shows the number of ordinary public and independent schools, learners and educators there were in 2018. It further shows that the highest and lowest percentages of learners, educators and schools in the ordinary school sector occurred in KwaZulu-Natal and the Northern Cape, respectively. Majority of independent schools were situated in Gauteng (759) followed by the Eastern Cape with 199 schools.

Table 3: Number of learners, educators and schools in the ordinary school sector, by province, from 2016 to 2018

| Province | Learners | | | Educators | | | Schools | | |
|---------------------|-------------------|-------------------|-------------------|----------------|----------------|----------------|---------------|---------------|---------------|
| | 2016 | 2017 | 2018 | 2016 | 2017 | 2018 | 2016 | 2017 | 2018 |
| Eastern Cape | 1 961 547 | 1 795 563 | 1 840 780 | 61 629 | 63 459 | 62 613 | 5 676 | 5 569 | 5 409 |
| Free State | 688 349 | 701 487 | 707 166 | 23 523 | 23 590 | 23 741 | 1 282 | 1 255 | 1 187 |
| Gauteng | 2 326 584 | 2 413 225 | 2 402 576 | 82 078 | 88 599 | 89 242 | 2 813 | 2 909 | 2 836 |
| KwaZulu-Natal | 2 877 544 | 2 863 316 | 2 821 221 | 89 799 | 93 340 | 93 878 | 6 142 | 6 099 | 6 038 |
| Limpopo | 1 765 555 | 1 776 467 | 1 724 791 | 54 418 | 53 736 | 54 729 | 4 018 | 4 025 | 4 006 |
| Mpumalanga | 1 074 352 | 1 096 428 | 1 045 972 | 34 404 | 34 546 | 34 825 | 1 847 | 1 836 | 1 863 |
| Northern Cape | 292 595 | 292 377 | 295 339 | 9 179 | 10 233 | 10 603 | 575 | 579 | 582 |
| North West | 829 467 | 825 776 | 840 640 | 26 065 | 28 232 | 27 352 | 1 534 | 1 556 | 1 523 |
| Western Cape | 1 116 572 | 1 127 634 | 1 141 057 | 37 516 | 37 586 | 40 466 | 1 687 | 1 776 | 1 710 |
| South Africa | 12 932 565 | 12 892 273 | 12 819 542 | 418 611 | 433 321 | 437 449 | 25 574 | 25 604 | 25 154 |

Sources:

2017: As published in School Realities 2017

2016: As published in Education Statistics 2016

From the figures reflected in Table 3 it can be deduced that, from 2016 to 2018, the number of learners decreased by 0.8% nationally, while the number of educators increased by 4.5% and schools decreased by 1.6% respectively. The increase in number of Gauteng schools in 2017 was due to misclassification of independent schools in the National Master list.



Table 4: Number of learners in ordinary schools, by province, sector, gender and grade, in 2018

| Province | Sector | Gender | Pre-Grade R Phase | GET Band | | | | | | | | | | | | | |
|---------------|-------------|--------|-------------------|------------------|---------|---------|---------|--------------------|---------|---------|---------|--------------|---------|---------|---------|------------------|-----------|
| | | | | Foundation Phase | | | | Intermediate Phase | | | | Senior Phase | | | | Total (GET Band) | |
| | | | | Pre-Gr. R | Gr. R | Gr. 1 | Gr. 2 | Gr. 3 | Total | Gr. 4 | Gr. 5 | Gr. 6 | Total | Gr. 7 | Gr. 8 | | Gr. 9 |
| Eastern Cape | Independent | Female | 0 | 2 497 | 3 596 | 3 393 | 3 268 | 12 754 | 3 105 | 2 703 | 2 589 | 8 397 | 2 477 | 2 226 | 1 905 | 6 608 | 27 759 |
| | | Total | 0 | 5 128 | 7 298 | 6 925 | 6 634 | 25 985 | 6 295 | 5 481 | 5 228 | 17 004 | 4 859 | 4 339 | 3 705 | 12 903 | 55 892 |
| | Public | Female | 0 | 61 147 | 77 779 | 73 319 | 71 831 | 284 076 | 74 658 | 72 898 | 70 482 | 218 038 | 68 452 | 65 777 | 59 843 | 194 072 | 696 186 |
| | | Total | 0 | 125 901 | 165 858 | 154 692 | 152 625 | 599 076 | 160 376 | 151 482 | 144 931 | 456 789 | 139 207 | 134 471 | 118 325 | 392 003 | 1 447 868 |
| | Both | Female | 0 | 63 644 | 81 375 | 76 712 | 75 099 | 296 830 | 77 763 | 75 601 | 73 071 | 226 435 | 70 929 | 68 003 | 61 748 | 200 680 | 723 945 |
| | | Total | 0 | 67 385 | 91 781 | 84 905 | 84 160 | 328 231 | 88 908 | 81 362 | 77 088 | 247 358 | 73 137 | 70 807 | 60 282 | 204 226 | 779 815 |
| | | Total | 0 | 131 029 | 173 156 | 161 617 | 159 259 | 625 061 | 166 671 | 156 963 | 150 159 | 473 793 | 144 066 | 138 810 | 122 030 | 404 906 | 1 503 760 |
| Free State | Independent | Female | 272 | 590 | 1 036 | 907 | 877 | 3 410 | 786 | 737 | 604 | 2 127 | 599 | 780 | 586 | 1 965 | 7 502 |
| | | Total | 521 | 1 146 | 2 035 | 1 815 | 1 766 | 6 762 | 1 605 | 1 428 | 1 219 | 4 252 | 1 214 | 1 472 | 1 137 | 3 823 | 14 837 |
| | Public | Female | 630 | 19 271 | 29 203 | 29 303 | 28 240 | 106 017 | 29 971 | 28 274 | 27 566 | 85 811 | 27 357 | 28 015 | 26 064 | 81 436 | 273 264 |
| | | Total | 1 174 | 39 091 | 61 114 | 59 885 | 57 910 | 218 000 | 63 601 | 58 191 | 55 859 | 177 651 | 56 112 | 57 271 | 50 692 | 164 075 | 559 726 |
| | Both | Female | 902 | 19 861 | 30 239 | 30 210 | 29 117 | 109 427 | 30 757 | 29 011 | 28 170 | 87 938 | 27 956 | 28 795 | 26 650 | 83 401 | 280 766 |
| | | Total | 1 695 | 40 237 | 63 149 | 61 700 | 59 676 | 224 762 | 65 206 | 59 619 | 57 078 | 181 903 | 57 326 | 58 743 | 51 829 | 167 898 | 574 563 |
| | | Total | 2 122 | 8 186 | 15 403 | 14 666 | 13 950 | 52 205 | 12 823 | 11 403 | 10 465 | 34 691 | 9 780 | 11 241 | 10 127 | 31 148 | 118 044 |
| Gauteng | Independent | Female | 2 120 | 8 186 | 15 403 | 14 666 | 13 950 | 52 205 | 12 823 | 11 403 | 10 465 | 34 691 | 9 780 | 11 241 | 10 127 | 31 148 | 118 044 |
| | | Total | 4 040 | 16 514 | 31 176 | 29 402 | 27 608 | 104 700 | 25 701 | 22 747 | 20 882 | 69 330 | 19 399 | 22 067 | 19 759 | 61 225 | 235 255 |
| | Public | Female | 972 | 52 267 | 94 401 | 92 864 | 93 139 | 332 671 | 93 282 | 88 392 | 86 328 | 268 000 | 82 044 | 81 105 | 75 086 | 238 235 | 838 908 |
| | | Total | 1 966 | 105 082 | 197 767 | 190 306 | 190 274 | 683 429 | 191 199 | 178 222 | 171 636 | 541 057 | 163 247 | 165 926 | 148 043 | 477 216 | 1 701 702 |
| | Both | Female | 3 092 | 60 453 | 109 804 | 107 530 | 107 089 | 384 876 | 106 105 | 99 795 | 96 793 | 302 693 | 91 824 | 92 346 | 85 213 | 269 383 | 956 952 |
| | | Total | 2 914 | 61 143 | 119 139 | 112 178 | 110 793 | 403 253 | 110 795 | 101 174 | 95 725 | 307 694 | 90 822 | 95 647 | 82 589 | 269 058 | 980 005 |
| | | Total | 6 006 | 121 596 | 228 943 | 219 708 | 217 882 | 788 129 | 216 900 | 200 969 | 192 518 | 610 387 | 182 646 | 187 993 | 167 802 | 538 441 | 1 936 957 |
| KwaZulu-Natal | Independent | Female | 436 | 1 713 | 2 386 | 2 207 | 2 112 | 8 418 | 1 945 | 1 824 | 1 646 | 5 415 | 1 696 | 1 786 | 1 608 | 5 090 | 18 923 |
| | | Total | 806 | 3 430 | 4 761 | 4 570 | 4 194 | 16 955 | 3 958 | 3 545 | 3 279 | 10 782 | 3 259 | 3 356 | 3 010 | 9 625 | 37 362 |
| | Public | Female | 1 060 | 87 571 | 113 511 | 110 059 | 108 258 | 419 399 | 111 836 | 107 707 | 105 584 | 325 127 | 102 174 | 104 641 | 96 887 | 303 702 | 1 048 228 |
| | | Total | 2 027 | 176 921 | 239 133 | 229 487 | 224 820 | 870 361 | 235 473 | 222 326 | 214 917 | 672 716 | 205 961 | 219 381 | 198 679 | 624 021 | 2 167 098 |
| | Both | Female | 1 496 | 89 284 | 115 897 | 112 266 | 110 370 | 427 817 | 113 781 | 109 531 | 107 230 | 330 542 | 103 870 | 106 427 | 98 495 | 308 792 | 1 067 151 |
| | | Total | 1 337 | 91 067 | 127 997 | 121 791 | 118 644 | 459 499 | 125 650 | 116 340 | 110 966 | 352 956 | 105 350 | 116 310 | 103 194 | 324 854 | 1 137 309 |
| | | Total | 2 833 | 180 351 | 243 894 | 234 057 | 229 014 | 887 316 | 239 431 | 225 871 | 218 196 | 683 498 | 209 220 | 222 737 | 201 689 | 633 646 | 2 204 460 |
| Limpopo | Independent | Female | 495 | 2 760 | 3 464 | 3 257 | 3 019 | 12 500 | 2 924 | 2 638 | 2 431 | 7 993 | 2 182 | 2 275 | 2 053 | 6 510 | 27 003 |
| | | Total | 956 | 5 491 | 6 905 | 6 574 | 6 041 | 25 011 | 5 825 | 5 248 | 4 735 | 15 808 | 4 295 | 4 526 | 3 845 | 12 666 | 53 485 |
| | Public | Female | 88 | 61 481 | 67 504 | 65 332 | 63 798 | 258 115 | 66 642 | 63 014 | 60 826 | 190 482 | 57 487 | 59 237 | 54 559 | 171 283 | 619 880 |
| | | Total | 196 | 123 115 | 141 698 | 136 290 | 133 407 | 534 510 | 141 985 | 130 459 | 123 108 | 395 552 | 115 631 | 127 265 | 114 956 | 357 852 | 1 287 914 |
| | Both | Female | 583 | 64 241 | 70 968 | 68 589 | 66 817 | 270 615 | 69 566 | 65 652 | 63 257 | 198 475 | 59 669 | 61 512 | 56 612 | 177 793 | 646 883 |
| | | Total | 569 | 64 365 | 77 635 | 74 275 | 72 631 | 288 906 | 78 244 | 70 055 | 64 586 | 212 885 | 60 257 | 70 279 | 62 189 | 192 725 | 694 516 |
| | | Total | 1 152 | 128 606 | 148 603 | 142 864 | 139 448 | 559 521 | 147 810 | 135 707 | 127 843 | 411 360 | 119 926 | 131 791 | 118 801 | 370 518 | 1 341 399 |
| Mpumalanga | Independent | Female | 43 | 644 | 1 168 | 1 050 | 946 | 3 808 | 877 | 740 | 655 | 2 272 | 589 | 433 | 402 | 1 424 | 7 504 |
| | | Total | 85 | 1 312 | 2 351 | 2 144 | 1 980 | 7 787 | 1 820 | 1 515 | 1 359 | 4 694 | 1 220 | 957 | 858 | 3 035 | 15 516 |
| | Public | Female | 105 | 31 607 | 43 976 | 41 122 | 41 363 | 158 068 | 42 207 | 40 807 | 39 283 | 122 297 | 38 232 | 37 795 | 35 662 | 111 689 | 392 054 |
| | | Total | 185 | 63 660 | 91 724 | 86 027 | 86 275 | 327 686 | 88 973 | 84 419 | 80 757 | 254 149 | 77 959 | 78 829 | 72 696 | 229 484 | 811 319 |
| | Both | Female | 148 | 32 251 | 45 144 | 42 172 | 42 309 | 161 876 | 43 084 | 41 547 | 39 938 | 124 569 | 38 821 | 38 228 | 36 064 | 113 113 | 399 558 |
| | | Total | 122 | 32 721 | 48 931 | 45 999 | 45 946 | 173 597 | 47 709 | 44 387 | 42 178 | 134 274 | 40 358 | 41 558 | 37 490 | 119 406 | 427 277 |
| | | Total | 270 | 64 972 | 94 075 | 88 171 | 88 255 | 335 473 | 90 793 | 85 934 | 82 116 | 258 843 | 79 179 | 79 786 | 73 554 | 232 519 | 826 835 |
| Northern Cape | Independent | Female | 63 | 211 | 161 | 181 | 159 | 712 | 122 | 98 | 98 | 318 | 73 | 183 | 162 | 418 | 1 448 |
| | | Total | 112 | 453 | 412 | 345 | 323 | 1 533 | 280 | 231 | 191 | 702 | 146 | 312 | 281 | 739 | 2 974 |
| | Public | Female | 180 | 9 793 | 13 063 | 12 303 | 12 320 | 47 479 | 13 139 | 11 909 | 11 404 | 36 452 | 11 352 | 11 254 | 10 436 | 33 042 | 116 973 |
| | | Total | 347 | 19 635 | 27 454 | 25 909 | 25 295 | 98 293 | 28 234 | 24 238 | 23 122 | 75 594 | 23 230 | 22 635 | 20 037 | 65 902 | 239 789 |
| | Both | Female | 243 | 10 004 | 13 224 | 12 484 | 12 479 | 48 191 | 13 261 | 12 007 | 11 502 | 36 770 | 11 425 | 11 437 | 10 598 | 33 460 | 118 421 |
| | | Total | 216 | 10 084 | 14 642 | 13 770 | 13 139 | 51 635 | 15 253 | 12 462 | 11 811 | 39 526 | 11 951 | 11 510 | 9 720 | 33 181 | 124 342 |
| | | Total | 459 | 20 088 | 27 866 | 26 254 | 25 618 | 99 826 | 28 514 | 24 469 | 23 313 | 76 296 | 23 376 | 22 947 | 20 318 | 66 641 | 242 763 |
| North West | Independent | Female | 55 | 847 | 1 187 | 1 131 | 1 098 | 4 263 | 959 | 831 | 800 | 2 590 | 697 | 626 | 526 | 1 849 | 8 702 |
| | | Total | 97 | 1 682 | 2 476 | 2 269 | 2 219 | 8 646 | 1 954 | 1 761 | 1 486 | 5 201 | 1 432 | 1 245 | 1 048 | 3 725 | 17 572 |
| | Public | Female | 58 | 26 805 | 35 435 | 35 147 | 34 774 | 132 161 | 36 892 | 33 812 | 32 524 | 103 228 | 30 973 | 32 477 | 29 306 | 92 756 | 328 145 |
| | | Total | 141 | 53 506 | 73 950 | 73 387 | 72 938 | 273 781 | 77 899 | 68 930 | 65 549 | 212 378 | 61 393 | 68 066 | 57 920 | 187 379 | 673 538 |
| | Both | Female | 113 | 27 652 | 36 622 | 36 278 | 35 872 | 136 424 | 37 851 | 34 643 | 33 324 | 105 818 | 31 670 | 33 103 | 29 832 | 94 605 | 336 847 |
| | | Total | 125 | 27 536 | 39 804 | 39 378 | 39 285 | 146 003 | 42 002 | 36 048 | 33 711 | 111 761 | 31 155 | 36 208 | 29 136 | 96 499 | 354 263 |
| | | Total | 238 | 55 188 | 76 426 | 75 656 | 75 157 | 282 427 | 79 853 | 70 691 | 67 035 | 217 579 | 62 825 | 69 311 | 58 968 | 191 104 | 691 110 |
| Western Cape | Independent | Female | 0 | 1 993 | 2 828 | 2 836 | 2 671 | 10 328 | 2 448 | 2 283 | 2 163 | 6 894 | 1 932 | 2 152 | 2 068 | 6 152 | 23 374 |
| | | Total | 0 | 3 865 | 5 612 | 5 588 | 5 315 | 20 380 | 4 958 | 4 418 | 4 216 | 13 592 | 3 886 | 4 104 | 4 063 | 12 053 | 46 025 |
| | Public | Female | 0 | 32 899 | 49 297 | 49 461 | 50 603 | 182 260 | 50 902 | 47 771 | 45 623 | 144 296 | 42 443 | 41 366 | 38 200 | 122 009 | 448 565 |
| | | Total | 0 | 65 584 | 101 753 | 101 912 | 103 284 | 372 533 | 104 948 | 95 997 | 90 128 | 291 073 | 83 701 | 79 772 | 71 782 | 235 255 | 898 861 |
| | Both | Female | 0 | 34 892 | 52 125 | 52 297 | 53 274 | 192 588 | 53 350 | 50 054 | 47 786 | | | | | | |

Table 4: Number of learners in ordinary schools, by province, sector, gender and grade, in 2018 (concluded)

| Province | Sector | Gender | FET Band | | | | Other 1) | Total Primary (Gr. 1-7) | Total Secondary (Gr. 8-12) | Total (Gr. 1-12) | Grand Total |
|---------------|-------------|--------|-----------|---------|---------|-----------|----------|----------------------------|-------------------------------|---------------------|-------------|
| | | | Gr. 10 | Gr. 11 | Gr. 12 | Total | | | | | |
| Eastern Cape | Independent | Female | 1 569 | 1 480 | 1 965 | 5 014 | 0 | 21 131 | 9 145 | 32 773 | 32 773 |
| | | Total | 3 028 | 2 825 | 3 433 | 9 286 | 0 | 42 720 | 17 330 | 65 178 | 65 178 |
| | Public | Female | 68 141 | 58 806 | 45 585 | 172 532 | 0 | 509 419 | 298 152 | 868 718 | 868 718 |
| | | Total | 135 175 | 109 870 | 82 689 | 327 734 | 0 | 1 069 171 | 580 530 | 1 775 602 | 1 775 602 |
| | Both | Female | 69 710 | 60 286 | 47 550 | 177 546 | 0 | 530 550 | 307 297 | 901 491 | 901 491 |
| | | Male | 68 493 | 52 409 | 38 572 | 159 474 | 0 | 581 341 | 290 563 | 939 289 | 939 289 |
| Total | | | 138 203 | 112 695 | 86 122 | 337 020 | 0 | 1 111 891 | 597 860 | 1 840 780 | 1 840 780 |
| Free State | Independent | Female | 618 | 477 | 441 | 1 536 | 0 | 5 546 | 2 902 | 9 038 | 9 310 |
| | | Total | 1 129 | 906 | 797 | 2 832 | 0 | 11 082 | 5 441 | 17 669 | 18 190 |
| | Public | Female | 28 726 | 21 516 | 17 705 | 67 947 | 0 | 199 914 | 122 026 | 341 211 | 341 841 |
| | | Total | 56 101 | 39 755 | 32 220 | 128 076 | 0 | 412 672 | 236 039 | 687 802 | 688 976 |
| | Both | Female | 29 344 | 21 993 | 18 146 | 69 483 | 0 | 205 460 | 124 928 | 350 249 | 351 151 |
| | | Male | 27 886 | 18 668 | 14 871 | 61 425 | 0 | 218 294 | 116 552 | 355 222 | 356 015 |
| Total | | | 57 230 | 40 661 | 33 017 | 130 908 | 0 | 423 754 | 241 480 | 705 471 | 707 166 |
| Gauteng | Independent | Female | 9 789 | 9 396 | 8 595 | 27 780 | 0 | 88 490 | 49 148 | 145 824 | 147 944 |
| | | Total | 19 233 | 18 320 | 15 838 | 53 391 | 0 | 176 915 | 95 217 | 288 646 | 292 686 |
| | Public | Female | 88 836 | 71 484 | 53 071 | 213 391 | 92 | 630 450 | 369 582 | 1 052 299 | 1 053 363 |
| | | Total | 176 237 | 132 676 | 97 044 | 405 957 | 265 | 1 282 651 | 719 926 | 2 107 659 | 2 109 890 |
| | Both | Female | 98 625 | 80 880 | 61 666 | 241 171 | 92 | 718 940 | 418 730 | 1 198 123 | 1 201 307 |
| | | Male | 96 845 | 70 116 | 51 216 | 218 177 | 173 | 740 626 | 396 413 | 1 198 182 | 1 201 269 |
| Total | | | 195 470 | 150 996 | 112 882 | 459 348 | 265 | 1 459 566 | 815 143 | 2 396 305 | 2 402 576 |
| KwaZulu-Natal | Independent | Female | 1 499 | 1 532 | 1 938 | 4 969 | 124 | 13 816 | 8 363 | 23 892 | 24 452 |
| | | Total | 2 865 | 2 839 | 3 330 | 9 034 | 196 | 27 566 | 15 400 | 46 396 | 47 398 |
| | Public | Female | 113 182 | 116 101 | 85 074 | 314 357 | 9 | 759 129 | 515 885 | 1 362 585 | 1 363 654 |
| | | Total | 231 557 | 218 915 | 154 176 | 604 648 | 50 | 1 572 117 | 1 022 708 | 2 771 746 | 2 773 823 |
| | Both | Female | 114 681 | 117 633 | 87 012 | 319 326 | 133 | 772 945 | 524 248 | 1 386 477 | 1 388 106 |
| | | Male | 119 741 | 104 121 | 70 494 | 294 356 | 113 | 826 738 | 513 860 | 1 431 665 | 1 433 115 |
| Total | | | 234 422 | 221 754 | 157 506 | 613 682 | 246 | 1 599 683 | 1 038 108 | 2 818 142 | 2 821 221 |
| Limpopo | Independent | Female | 1 936 | 1 800 | 1 988 | 5 724 | 0 | 19 915 | 10 052 | 32 727 | 33 222 |
| | | Total | 3 732 | 3 465 | 3 518 | 10 715 | 0 | 39 623 | 19 086 | 64 200 | 65 156 |
| | Public | Female | 71 945 | 66 909 | 50 930 | 189 784 | 0 | 444 603 | 303 580 | 809 664 | 809 752 |
| | | Total | 149 414 | 128 755 | 93 356 | 371 525 | 0 | 922 578 | 613 746 | 1 659 439 | 1 659 635 |
| | Both | Female | 73 881 | 68 709 | 52 918 | 195 508 | 0 | 464 518 | 313 632 | 842 391 | 842 974 |
| | | Male | 79 265 | 63 511 | 43 956 | 186 732 | 0 | 497 683 | 319 200 | 881 248 | 881 817 |
| Total | | | 153 146 | 132 220 | 96 874 | 382 240 | 0 | 962 201 | 632 832 | 1 723 639 | 1 724 791 |
| Mpumalanga | Independent | Female | 414 | 587 | 1 100 | 2 101 | 0 | 6 025 | 2 936 | 9 605 | 9 648 |
| | | Total | 940 | 1 262 | 2 018 | 4 220 | 0 | 12 389 | 6 035 | 19 736 | 19 821 |
| | Public | Female | 42 106 | 40 318 | 30 026 | 112 450 | 14 | 286 990 | 185 907 | 504 504 | 504 623 |
| | | Total | 85 089 | 75 563 | 53 960 | 214 612 | 35 | 596 134 | 366 137 | 1 025 931 | 1 026 151 |
| | Both | Female | 42 520 | 40 905 | 31 126 | 114 551 | 14 | 293 015 | 188 843 | 514 109 | 514 271 |
| | | Male | 43 509 | 35 920 | 24 852 | 104 281 | 21 | 315 508 | 183 329 | 531 558 | 531 701 |
| Total | | | 86 029 | 76 825 | 55 978 | 218 832 | 35 | 608 523 | 372 172 | 1 045 667 | 1 045 972 |
| Northern Cape | Independent | Female | 196 | 152 | 139 | 487 | 0 | 892 | 832 | 1 935 | 2 007 |
| | | Total | 321 | 248 | 223 | 792 | 0 | 1 928 | 1 385 | 3 766 | 3 878 |
| | Public | Female | 12 006 | 8 457 | 6 817 | 27 280 | 0 | 85 490 | 48 970 | 144 253 | 144 433 |
| | | Total | 23 453 | 15 623 | 12 249 | 51 325 | 0 | 177 482 | 93 997 | 291 114 | 291 461 |
| | Both | Female | 12 202 | 8 609 | 6 956 | 27 767 | 0 | 86 382 | 49 802 | 146 188 | 146 431 |
| | | Male | 11 572 | 7 262 | 5 516 | 24 350 | 0 | 93 028 | 45 580 | 148 692 | 148 908 |
| Total | | | 23 774 | 15 871 | 12 472 | 52 117 | 0 | 179 410 | 95 382 | 294 880 | 295 339 |
| North West | Independent | Female | 469 | 432 | 355 | 1 256 | 0 | 6 703 | 2 408 | 9 958 | 10 013 |
| | | Total | 991 | 777 | 658 | 2 426 | 0 | 13 597 | 4 719 | 19 998 | 20 095 |
| | Public | Female | 34 066 | 24 350 | 18 633 | 77 049 | 0 | 239 557 | 138 832 | 405 194 | 405 252 |
| | | Total | 66 952 | 45 454 | 34 460 | 146 866 | 0 | 494 046 | 272 852 | 820 404 | 820 545 |
| | Both | Female | 34 535 | 24 782 | 18 988 | 78 305 | 0 | 246 260 | 141 240 | 415 152 | 415 265 |
| | | Male | 33 408 | 21 449 | 16 130 | 70 987 | 0 | 261 383 | 136 331 | 425 250 | 425 375 |
| Total | | | 67 943 | 46 231 | 35 118 | 149 292 | 0 | 507 643 | 277 571 | 840 402 | 840 640 |
| Western Cape | Independent | Female | 1 908 | 1 896 | 1 771 | 5 575 | 0 | 17 161 | 9 795 | 28 949 | 28 949 |
| | | Total | 3 688 | 3 690 | 3 543 | 10 921 | 0 | 33 993 | 19 088 | 56 946 | 56 946 |
| | Public | Female | 39 345 | 33 792 | 28 567 | 101 704 | 0 | 336 100 | 181 270 | 550 269 | 550 269 |
| | | Total | 73 894 | 61 066 | 50 290 | 185 250 | 0 | 681 723 | 336 804 | 1 084 111 | 1 084 111 |
| | Both | Female | 41 253 | 35 688 | 30 338 | 107 279 | 0 | 353 261 | 191 065 | 579 218 | 579 218 |
| | | Male | 36 329 | 29 068 | 23 495 | 88 892 | 0 | 362 455 | 164 827 | 561 839 | 561 839 |
| Total | | | 77 582 | 64 756 | 53 833 | 196 171 | 0 | 715 716 | 355 892 | 1 141 057 | 1 141 057 |
| South Africa | Independent | Female | 18 398 | 17 752 | 18 292 | 54 442 | 124 | 179 679 | 95 581 | 294 701 | 298 309 |
| | | Male | 17 529 | 16 580 | 15 066 | 49 175 | 72 | 180 134 | 88 120 | 287 834 | 291 039 |
| | | Total | 35 927 | 34 332 | 33 358 | 103 617 | 196 | 359 813 | 183 701 | 582 535 | 589 348 |
| | Public | Female | 498 353 | 441 733 | 336 408 | 1 276 494 | 115 | 3 491 652 | 2 164 204 | 6 038 697 | 6 041 905 |
| | | Male | 499 519 | 385 944 | 274 036 | 1 159 499 | 235 | 3 716 922 | 2 078 535 | 6 185 111 | 6 188 289 |
| | | Total | 997 872 | 827 677 | 610 444 | 2 435 993 | 350 | 7 208 574 | 4 242 739 | 12 223 808 | 12 230 194 |
| | Both | Female | 516 751 | 459 485 | 354 700 | 1 330 936 | 239 | 3 671 331 | 2 259 785 | 6 333 398 | 6 340 214 |
| | | Male | 517 048 | 402 524 | 289 102 | 1 208 674 | 307 | 3 897 056 | 2 166 655 | 6 472 945 | 6 479 328 |
| | | Total | 1 033 799 | 862 009 | 643 802 | 2 539 610 | 546 | 7 568 387 | 4 426 440 | 12 806 343 | 12 819 542 |

Note 1: Data exclude learners at stand-alone ECD sites and special schools.

Note 2: Owing to a shortage of space in the table, the male enrolment figures for ordinary public and independent schools are intentionally omitted in the provincial data, but are included in the national data.

1) Learners not grouped in any of the grades provided

Figure 1: Percentage distribution of learners in ordinary schools, by phase, in 2018

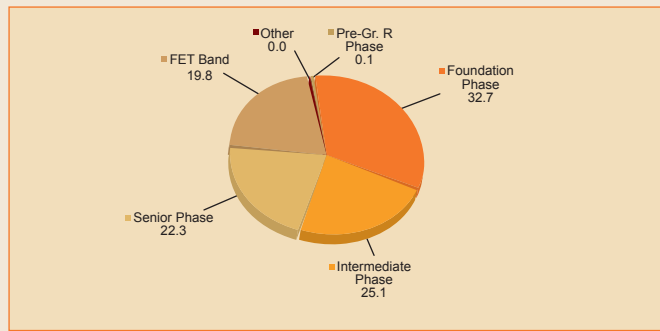


Figure 1 reveals that the highest proportion of learners in ordinary schools nationally was located in the foundation phase (32.7%) followed by the intermediate phase and the senior phase with 25.1% and 22.3%.

Figure 2: Percentage distribution of female learners in ordinary schools, by grade, in 2018

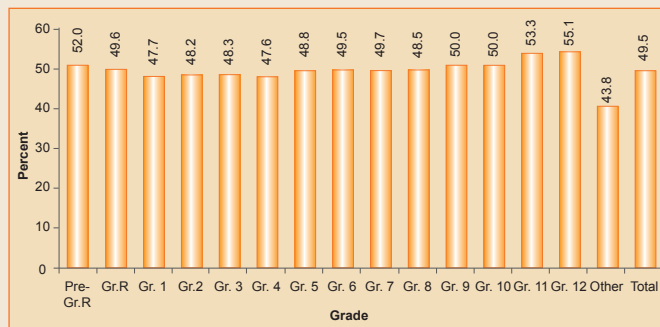


Figure 2 shows that, in the schooling system, there were more male than female (49.5%) learners. The lowest percentage of female learners in ordinary schools nationally was in Grades 1 and 4 (47%) and the highest percentage was in Grades 11 and 12 (53.3 and 55.1% respectively).

Figure 3: Percentage distribution of learners in ordinary schools, by grade, in 2018

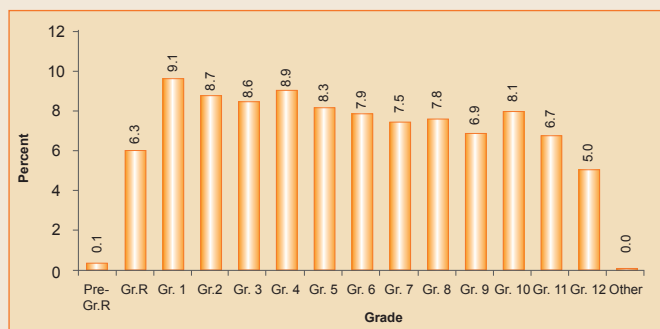


Figure 3 indicates that enrolment is generally very high in Grade 1 (9.1%) and declines as learners move to higher grades within the schooling system with 5.0% in Grade 12.

Table 5 reflects the following indicators:

(a) When counting all educators, the LER for ordinary public schools nationally was 30.7, while, when counting only state-paid educators in these schools, the LER increased to 33.8.

(b) The LSR for ordinary public schools nationally was 525, with six provinces (Free State, Gauteng, Mpumalanga, the Northern Cape, North West and the Western Cape) higher than the national average.

(c) The ESR for ordinary public schools nationally was 17.1, with six provinces (the Free State, Gauteng, Mpumalanga, the Northern Cape, North West and the Western Cape) higher than the national average.

Table 5: Indicators for ordinary PUBLIC schools, by province, in 2018

| Province | LER | | LSR | ESR |
|---------------------|-----------------------------------|------------------------------------|------------|-------------|
| | State-paid and SGB-paid Educators | State-paid Educators ¹⁾ | | |
| Eastern Cape | 29.9 | 33.7 | 341 | 11.4 |
| Free State | 30.4 | 33.5 | 617 | 20.3 |
| Gauteng | 30.5 | 35.3 | 1016 | 33.3 |
| KwaZulu-Natal | 30.7 | 32.9 | 474 | 15.4 |
| Limpopo | 32.1 | 33.1 | 432 | 13.4 |
| Mpumalanga | 30.5 | 32.6 | 586 | 19.2 |
| Northern Cape | 28.5 | 31.4 | 535 | 18.8 |
| North West | 31.4 | 34.0 | 564 | 18.0 |
| Western Cape | 30.4 | 36.9 | 751 | 24.7 |
| South Africa | 30.7 | 33.8 | 525 | 17.1 |

1) Underlying data not shown in the publication

Figure 4: Frequency distribution of learners in ordinary PUBLIC schools in 2018

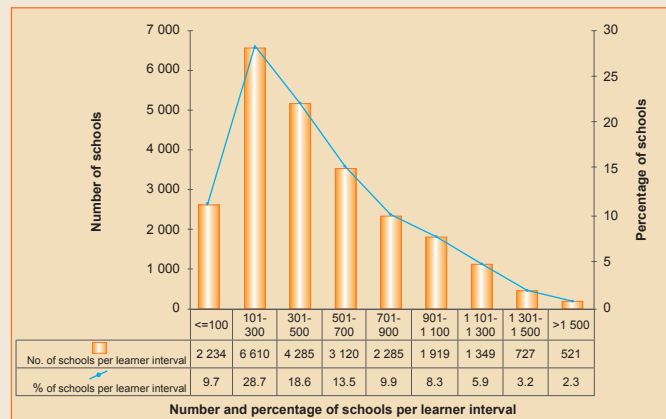


Figure 4, a histogram, shows that the highest number of ordinary public schools nationally (6 610, or 28.7%) was in the 101 to 300 learner interval. Furthermore, there were 2 234 schools (9.7%) and 521 schools (2.3%) in, respectively, the 100 and below learner interval and the above 1 500 learner interval.

Figure 5: Frequency distribution of LER in ordinary PUBLIC schools in 2018

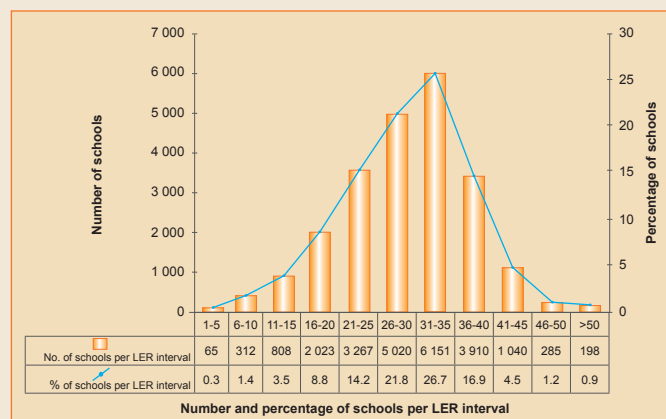


Figure 5, a histogram, reflects that the highest number of ordinary public schools nationally (6 151, or 26.7%) was in the 31 to 35 LER interval. Furthermore, there were 65 schools (0.3%) and 198 schools (0.9%) in, respectively, the one to five LER interval and the above 50 LER interval.