

# School Realities

Published September 2014  
ISBN: 978-1-4315-1986-6  
Enquiries: 012 357 3676

In 2014, there were 12 655 436 learners in ordinary public and independent schools (hereinafter collectively referred to as ordinary schools) in South Africa, who attended 25 741 schools and were served by 425 090 educators (see Tables 2 and 3). These data are from the survey conducted on the 10<sup>th</sup> school day. Approximately 99.9% of functional ordinary schools submitted the survey forms. No imputation was done on the data. The figures in this publication are preliminary, and the final figures will be published in the more comprehensive *Education Statistics in South Africa 2014*.

**Table 1: List of abbreviations**

<b>ECD</b> Early Childhood Development	<b>LER</b> Learner-Educator Ratio
<b>ESR</b> Educator-School Ratio	<b>LSR</b> Learner-School Ratio
<b>FET</b> Further Education and Training	<b>SGB</b> School Governing Body
<b>GET</b> General Education and Training	<b>SNE</b> Special Need Education

**Table 2: Number of learners, educators and schools in the ordinary school sector, by province, in 2014**

Province	Public			Independent			Public and Independent					
	Learners	Educators	Schools	Learners	Educators	Schools	Learners	As % of National Total	Educators	As % of National Total	Schools	As % of National Total
Eastern Cape	1 889 307	61 260	5 554	57 578	2 998	178	1 946 885	15.4	64 258	15.1	5 732	22.3
Free State	656 408	23 631	1 306	15 882	921	70	672 290	5.3	24 552	5.8	1 376	5.3
Gauteng	1 944 486	60 782	2 070	246 989	16 483	651	2 191 475	17.3	77 265	18.2	2 721	10.6
KwaZulu-Natal	2 831 311	90 497	5 915	70 386	5 063	236	2 901 697	22.9	95 560	22.5	6 151	23.9
Limpopo	1 665 516	54 704	3 929	55 069	2 552	147	1 720 585	13.6	57 256	13.5	4 076	15.8
Mpumalanga	1 034 151	33 613	1 762	23 637	1 387	105	1 057 788	8.4	35 000	8.2	1 867	7.3
Northern Cape	284 908	8 880	551	4 096	302	26	289 004	2.3	9 182	2.2	577	2.2
North West	784 184	25 004	1 515	16 132	1 082	55	800 316	6.3	26 086	6.1	1 570	6.1
Western Cape	1 026 744	32 237	1 458	48 652	3 694	213	1 075 396	8.5	35 931	8.5	1 671	6.5
<b>South Africa</b>	<b>12 117 015</b>	<b>390 608</b>	<b>24 060</b>	<b>538 421</b>	<b>34 482</b>	<b>1 681</b>	<b>12 655 436</b>	<b>100.0</b>	<b>425 090</b>	<b>100.0</b>	<b>25 741</b>	<b>100.0</b>

Table 2 shows the number of ordinary public and independent schools, learners and educators there were in 2014. It further shows that the highest and lowest percentages of learners, educators and schools in the ordinary school sector occurred in KwaZulu-Natal and the Northern Cape, respectively. Majority of independent schools were situated in Gauteng (651) followed by KwaZulu-Natal with 236 schools.

**Table 3: Number of learners, educators and schools in the ordinary school sector, by province, from 2012 to 2014**

Province	Learners			Educators			Schools		
	2012	2013	2014	2012	2013	2014	2012	2013	2014
Eastern Cape	1 951 523	1 938 078	1 946 885	67 936	66 007	64 258	5 754	5 733	5 732
Free State	661 974	664 508	672 290	24 828	24 475	24 552	1 419	1 396	1 376
Gauteng	2 075 387	2 129 526	2 191 475	73 960	74 823	77 265	2 611	2 649	2 721
KwaZulu-Natal	2 877 969	2 866 570	2 901 697	94 932	96 057	95 560	6 176	6 156	6 151
Limpopo	1 715 778	1 714 832	1 720 585	57 670	57 108	57 256	4 078	4 067	4 076
Mpumalanga	1 054 783	1 052 807	1 057 788	34 664	34 936	35 000	1 920	1 885	1 867
Northern Cape	277 494	282 631	289 004	8 864	8 972	9 182	580	573	577
North West	775 142	788 261	800 316	25 924	26 194	26 086	1 645	1 606	1 570
Western Cape	1 038 019	1 052 435	1 075 396	36 389	36 451	35 931	1 643	1 655	1 671
<b>South Africa</b>	<b>12 428 069</b>	<b>12 489 648</b>	<b>12 655 436</b>	<b>425 167</b>	<b>425 023</b>	<b>425 090</b>	<b>25 826</b>	<b>25 720</b>	<b>25 741</b>

Sources:

2012: As published in *Education Statistics in South Africa 2012*.

2013: As published in *School Realities 2013*

From the figures reflected in Table 3 it can be deduced that, from 2012 to 2014, the number of learners increased by 1.8% nationally, while the number of educators and schools decreased by 0.01% and 0.3% respectively. The Eastern Cape was the only province that experienced a drop in learner and educator numbers.

www.education.gov.za  
Click EMIS on the left menu, then STATISTICAL PUBLICATIONS



## basic education

Department:  
Basic Education  
REPUBLIC OF SOUTH AFRICA



# E M I S

**Table 4: Number of learners in ordinary schools, by province, sector, gender and grade, in 2014**

Province	Sector	Gender	Pre-Grade R Phase	GET Band												Total(GET Band)	
				Foundation Phase					Intermediate Phase				Senior Phase				
				Gr. R	Gr. 1	Gr. 2	Gr. 3	Total	Gr. 4	Gr. 5	Gr. 6	Total	Gr. 7	Gr. 8	Gr. 9		Total
Eastern Cape	Independent	Female	1 236	2 046	2 728	2 709	2 701	10 184	2 474	2 170	1 910	6 554	1 725	1 828	1 707	5 260	21 998
		Total	2 466	4 054	5 560	5 611	5 438	20 663	4 834	4 272	3 757	12 863	3 509	3 572	3 371	10 452	43 978
	Public	Female	5 021	74 229	91 752	84 556	79 816	330 353	75 279	69 368	65 683	210 330	66 211	65 599	68 382	200 192	740 875
		Total	9 823	150 548	194 631	177 736	165 684	688 599	157 243	142 946	134 894	435 083	136 391	133 581	137 744	407 716	1 531 398
	Both	Female	6 257	76 275	94 480	87 265	82 517	340 537	77 753	71 538	67 593	216 884	67 936	67 427	70 089	203 858	761 279
		Total	12 289	154 602	200 191	183 347	171 122	709 262	162 077	147 218	138 651	447 946	139 900	137 153	141 115	414 871	1 572 079
Free State	Independent	Female	188	467	785	720	613	2 585	662	529	539	1 730	487	546	638	1 671	5 986
		Total	384	980	1 601	1 484	1 332	5 397	1 340	1 115	1 067	3 522	1 033	1 108	1 287	3 428	12 347
	Public	Female	420	16 889	31 256	29 517	28 115	105 777	27 573	24 310	24 060	75 943	21 749	23 469	31 641	76 859	258 579
		Total	799	34 087	66 050	61 605	57 514	219 256	57 458	49 998	48 500	155 956	43 587	47 326	65 456	156 369	531 581
	Both	Female	608	17 356	32 041	30 237	28 728	108 362	28 235	24 839	24 599	77 673	22 236	24 015	32 279	78 530	264 565
		Total	1 183	35 067	67 651	63 089	58 846	224 653	58 798	51 113	49 567	159 875	44 620	48 434	66 743	159 797	543 928
Gauteng	Independent	Female	4 440	7 417	12 679	11 678	10 656	42 430	9 508	8 449	7 822	25 779	7 579	9 249	8 799	25 627	93 836
		Total	8 729	14 685	25 521	23 322	21 147	84 675	18 870	16 888	15 577	51 335	15 056	17 633	16 944	49 633	185 643
	Public	Female	2 452	48 180	94 007	89 213	84 405	315 805	80 658	73 484	71 304	225 446	69 201	70 675	74 633	214 509	755 760
		Total	4 780	97 240	195 660	182 250	171 329	646 479	164 011	148 193	141 456	453 660	136 437	142 693	153 074	432 204	1 532 343
	Both	Female	6 892	55 597	106 686	100 891	95 061	358 235	90 166	81 933	79 126	251 225	76 780	79 924	83 432	240 136	849 596
		Total	13 509	111 925	221 181	205 572	192 476	731 154	182 881	165 081	157 033	504 995	151 493	160 326	170 018	481 837	1 717 986
KwaZulu-Natal	Independent	Female	1 537	2 323	3 106	2 740	2 731	10 900	2 379	2 222	2 110	6 711	2 183	2 658	2 639	7 480	25 091
		Total	3 023	4 637	6 131	5 498	5 299	21 565	4 644	4 350	4 019	13 013	3 987	5 197	5 056	14 240	48 818
	Public	Female	2 584	93 924	126 186	117 488	111 458	449 056	107 055	97 360	95 469	299 884	94 885	105 331	109 005	309 221	1 058 161
		Total	5 029	189 435	267 404	246 206	230 303	933 348	221 758	199 770	196 750	618 278	193 953	218 781	222 267	635 001	2 186 627
	Both	Female	4 121	96 247	129 292	120 228	114 189	459 956	109 434	99 582	97 579	306 595	97 068	107 989	111 644	316 701	1 083 252
		Total	8 052	194 072	273 535	251 704	235 602	954 913	226 402	204 120	200 769	631 291	197 940	223 978	227 323	649 241	2 235 445
Limpopo	Independent	Female	472	2 000	2 491	2 535	2 302	9 328	2 020	1 889	1 816	5 725	1 686	2 158	1 942	5 786	20 839
		Total	905	3 974	5 104	4 949	4 530	18 557	4 117	3 765	3 546	11 428	3 360	4 190	3 961	11 511	41 496
	Public	Female	274	59 535	69 531	67 838	63 955	260 859	60 424	52 687	52 759	165 870	51 771	54 729	80 934	187 434	614 163
		Total	546	119 177	146 214	141 398	131 256	538 045	125 977	109 452	109 446	344 875	105 651	113 336	178 040	397 027	1 279 947
	Both	Female	746	61 535	72 022	70 373	66 257	270 187	62 444	54 576	54 575	171 595	53 457	56 887	82 876	193 220	635 002
		Total	1 451	123 151	151 318	146 347	135 786	556 602	130 094	113 217	112 992	356 303	109 011	117 526	182 001	408 538	1 321 443
Mpumalanga	Independent	Female	367	739	1 255	1 163	1 041	4 198	921	802	746	2 469	684	741	668	2 093	8 760
		Total	742	1 554	2 507	2 376	2 129	8 566	1 876	1 600	1 496	4 972	1 317	1 524	1 313	4 154	17 692
	Public	Female	917	29 234	47 218	44 302	41 998	162 752	40 101	36 025	35 755	111 881	36 368	41 275	41 099	118 742	393 375
		Total	1 803	58 669	100 190	93 175	87 234	339 268	83 712	75 025	73 413	232 150	74 164	84 508	82 106	240 778	812 196
	Both	Female	1 284	29 973	48 473	45 465	43 039	166 950	41 022	36 827	36 501	114 350	37 052	42 016	41 767	120 835	402 135
		Total	2 545	60 223	102 697	95 551	89 363	347 834	85 588	76 625	74 909	237 122	75 481	86 032	83 419	244 932	829 888
Northern Cape	Independent	Female	127	142	179	160	135	616	115	102	79	296	83	214	198	495	1 407
		Total	243	298	377	349	286	1 310	218	203	168	589	152	374	344	870	2 769
	Public	Female	424	8 936	13 392	12 519	11 992	46 839	11 897	12 458	10 670	35 025	10 914	11 577	11 281	33 772	115 636
		Total	857	17 976	28 271	25 855	24 756	96 858	25 360	24 196	22 011	71 567	21 979	23 026	22 623	67 628	236 053
	Both	Female	551	9 078	13 571	12 679	12 127	47 455	12 012	12 560	10 749	35 321	10 997	11 791	11 479	34 267	117 043
		Total	1 100	18 274	28 648	26 204	25 042	98 168	25 578	24 399	22 179	72 156	22 133	23 400	22 967	68 500	238 824
North West	Independent	Female	124	654	929	882	729	3 194	700	605	509	1 814	516	527	540	1 583	6 591
		Total	256	1 343	1 867	1 716	1 538	6 464	1 447	1 206	1 024	3 677	1 036	1 007	1 057	3 100	13 241
	Public	Female	266	24 689	37 111	35 856	34 340	131 996	33 628	30 169	28 374	92 171	27 740	28 912	32 942	89 594	313 761
		Total	519	49 302	77 998	74 555	70 441	272 296	69 413	61 912	57 511	188 836	55 732	59 030	67 746	182 508	643 640
	Both	Female	390	25 343	38 040	36 738	35 069	135 190	34 328	30 774	28 883	93 985	28 256	29 439	33 482	91 177	320 352
		Total	775	50 645	79 865	76 271	71 979	278 760	70 860	63 118	58 535	192 513	56 768	60 037	68 803	185 608	656 881
Western Cape	Independent	Female	961	1 809	2 242	2 144	1 927	8 122	1 761	1 701	1 596	5 058	1 546	1 593	1 778	4 917	18 097
		Total	1 722	3 559	4 426	4 247	3 918	16 150	3 513	3 416	3 158	10 087	3 130	3 221	3 441	9 792	36 029
	Public	Female	567	30 662	51 367	47 883	44 141	174 053	43 850	40 528	38 622	123 000	37 854	38 940	42 872	119 666	416 719
		Total	1 094	61 526	106 389	97 562	89 313	354 790	90 587	81 428	76 724	248 739	74 835	75 517	82 993	233 345	836 874
	Both	Female	1 528	32 471	53 609	50 027	46 068	182 175	45 611	42 229	40 218	128 058	39 400	40 533	44 650	124 583	434 816
		Total	2 816	65 085	110 815	101 809	93 231	370 940	94 100	84 844	79 882	258 826	77 965	78 738	86 434	243 137	872 903
South Africa	Independent	Female	9 452	17 597	26 394	24 731	22 835	91 557	20 540	18 469	17 127	56 136	16 489	19 514	18 909	54 912	202 605
		Total	18 470	35 084	53 094	49 552	45 617	183 347	40 859	36 815	33 812	111 486	32 582	37 826	36 774	107 182	402 015
	Public	Female	12 925	386 278	561 820	529 172	500 220	1 977 490	480 465	436 389	422 696	1 339 550	416 693	440 507	492 789	1 349 989	4 667 029
		Total	25 250	777 960	1 182 807	1 100 342	1 027 830	4 088 939	995 519	892 920	860 705	2 749 144	842 729	897 798	1 012 049	2 752 576	9 590 659
	Both	Female	22 377	403 875	588 214	553 903	523 055	2 069 047	501 005	454 858	439 823	1 395 686	433 182	460 021	511 698	1 404 901	4 869 634
		Total	43 720	813 044	1 235 901	1 149 894	1 073 447	4 272 286	1 036 378	929 735	894 517	2 860 630	875 311	935 624	1 048 823	2 859 758	9 992 674

# E M I S

**Table 4: Number of learners in ordinary schools, by province, sector, gender and grade, in 2014 (concluded)**

Province	Sector	Gender	FET Band				Other <sup>1)</sup>	Total Primary (Gr.1-7)	Total Secondary (Gr.8-12)	Total (Gr.1-12)	Grand Total
			Gr. 10	Gr. 11	Gr. 12	Total					
Eastern Cape	Independent	Female	1 744	1 988	2 279	6 011	97	16 417	9 546	25 963	29 342
		Total	3 401	3 617	3 911	10 929	205	32 981	17 872	50 853	57 578
	Public	Female	82 616	67 155	37 658	187 429	160	532 665	321 410	854 075	933 485
		Total	157 040	122 324	68 242	347 606	480	1 109 525	618 931	1 728 456	1 889 307
	Both	Female	84 360	69 143	39 937	193 440	248	549 082	330 956	880 038	962 818
		Total	160 441	125 941	72 153	358 535	685	1 142 506	636 803	1 779 309	1 946 885
Free State	Independent	Female	648	566	491	1 705	2	4 335	2 889	7 224	7 881
		Total	1 226	1 046	874	3 146	5	8 972	5 541	14 513	15 882
	Public	Female	29 391	22 884	14 296	66 571	16	186 580	121 681	308 261	325 586
		Total	55 293	42 128	26 573	123 994	34	384 712	236 776	621 488	656 408
	Both	Female	30 039	23 450	14 787	68 276	18	190 915	124 570	315 485	333 467
		Total	26 480	19 724	12 660	58 864	21	202 769	117 747	320 516	338 823
Gauteng	Independent	Female	9 344	9 276	8 712	27 332	318	68 371	45 380	113 751	125 920
		Total	18 021	17 767	16 185	51 973	644	136 381	86 550	222 931	246 989
	Public	Female	88 647	72 463	50 703	211 813	2 155	562 272	357 121	919 393	972 180
		Total	174 471	134 790	91 856	401 117	6 246	1 139 336	696 884	1 836 220	1 944 486
	Both	Female	97 991	81 739	59 415	239 145	2 473	630 643	402 501	1 033 144	1 098 106
		Total	94 501	70 818	48 626	213 945	4 417	645 074	380 933	1 026 007	1 093 369
KwaZulu-Natal	Independent	Female	2 652	2 824	4 333	9 809	21	17 471	15 106	32 577	36 458
		Total	5 270	5 378	7 849	18 497	48	33 928	28 750	62 678	70 386
	Public	Female	132 119	120 713	78 489	331 321	129	749 901	545 657	1 295 558	1 392 195
		Total	264 816	228 884	145 670	639 370	285	1 556 144	1 080 418	2 636 562	2 831 311
	Both	Female	134 771	123 537	82 822	341 130	150	767 372	560 763	1 328 135	1 428 653
		Total	135 315	110 725	70 697	316 737	183	822 700	548 405	1 371 105	1 473 044
Limpopo	Independent	Female	2 396	2 334	2 130	6 860	7	14 739	10 960	25 699	28 178
		Total	4 633	4 272	3 750	12 655	13	29 371	20 806	50 177	55 069
	Public	Female	97 634	67 874	39 504	205 012	11	418 965	340 675	759 640	819 460
		Total	189 170	122 667	73 157	384 994	29	869 394	676 370	1 545 764	1 665 516
	Both	Female	100 030	70 208	41 634	211 872	18	433 704	351 635	785 339	847 638
		Total	93 773	56 731	35 273	185 777	24	465 061	345 541	810 602	872 947
Mpumalanga	Independent	Female	645	782	1 253	2 680	0	6 612	4 089	10 701	11 807
		Total	1 416	1 535	2 252	5 203	0	13 301	8 040	21 341	23 637
	Public	Female	49 083	43 931	24 496	117 510	112	281 767	199 884	481 651	511 914
		Total	94 528	80 645	44 685	219 858	294	586 913	386 472	973 385	1 034 151
	Both	Female	49 728	44 713	25 749	120 190	112	288 379	203 973	492 352	523 721
		Total	46 216	37 467	21 188	104 871	182	311 835	190 539	502 374	534 067
Northern Cape	Independent	Female	266	195	191	652	1	853	1 064	1 917	2 187
		Total	481	314	285	1 080	2	1 753	1 798	3 551	4 094
	Public	Female	11 391	8 892	5 161	25 444	38	83 842	48 302	132 144	141 542
		Total	22 034	16 432	9 450	47 916	82	172 428	93 565	265 993	284 908
	Both	Female	11 657	9 087	5 352	26 096	39	84 695	49 366	134 061	143 729
		Total	10 858	7 659	4 383	22 900	45	89 488	45 997	135 485	145 275
North West	Independent	Female	517	494	377	1 388	1	4 870	2 455	7 325	8 104
		Total	1 011	919	701	2 631	4	9 834	4 695	14 529	16 132
	Public	Female	35 027	25 146	14 133	74 306	22	227 218	136 160	363 378	388 355
		Total	67 734	46 053	26 181	139 968	57	467 562	266 744	734 306	784 184
	Both	Female	35 544	25 640	14 510	75 694	23	232 088	138 615	370 703	396 459
		Total	33 201	21 332	12 372	66 905	38	245 308	132 824	378 132	403 817
Western Cape	Independent	Female	1 788	1 910	1 719	5 417	62	12 917	8 788	21 705	24 537
		Total	3 536	3 725	3 459	10 720	181	25 808	17 382	43 190	48 652
	Public	Female	41 413	36 774	26 356	104 543	546	304 245	186 355	490 600	522 375
		Total	75 791	64 846	46 739	187 376	1 400	616 838	345 886	962 724	1 026 744
	Both	Female	43 201	38 684	28 075	109 960	608	317 162	195 143	512 305	546 912
		Total	36 126	29 887	22 123	88 136	973	325 484	168 125	493 609	528 484
South Africa	Independent	Female	20 000	20 369	21 485	61 854	509	146 585	100 277	246 862	274 420
		Total	18 995	18 204	17 781	54 980	593	145 746	91 157	236 903	264 001
	Public	Female	38 995	38 573	39 266	116 834	1 102	292 331	191 434	483 765	538 421
		Total	567 321	465 832	290 796	1 323 949	3 189	3 347 455	2 257 245	5 604 700	6 007 092
	Both	Female	533 556	392 937	241 757	1 168 250	5 718	3 555 397	2 144 801	5 700 198	6 109 923
		Total	1 100 877	858 769	532 553	2 492 199	8 907	6 902 852	4 402 046	11 304 898	12 117 015
Both	Female	587 321	486 201	312 281	1 385 803	3 698	3 494 040	2 357 522	5 851 562	6 281 512	
	Total	552 551	411 141	259 538	1 223 230	6 311	3 701 143	2 235 958	5 937 101	6 373 924	
<b>Total</b>			<b>1 139 872</b>	<b>897 342</b>	<b>571 819</b>	<b>2 609 033</b>	<b>10 009</b>	<b>7 195 183</b>	<b>4 593 480</b>	<b>11 788 663</b>	<b>12 655 436</b>

Note 1: Data exclude learners at stand-alone ECD sites and special schools.

Note 2: Owing to a shortage of space in the table, the male enrolment figures for ordinary public and independent schools are intentionally omitted in the provincial data, but are included in the national data.

1) Learners not grouped in any of the grades provided

**Figure 1: Percentage distribution of learners in ordinary schools, by phase, in 2014**

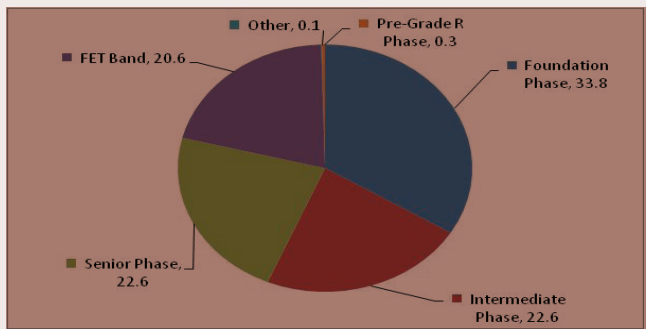


Figure 1 reveals that the highest proportion of learners in ordinary schools nationally was located in the foundation phase (33.8%) followed by the intermediate phase and the senior phase with 22.6%.

**Figure 2: Percentage distribution of female learners in ordinary schools, by grade, in 2014**

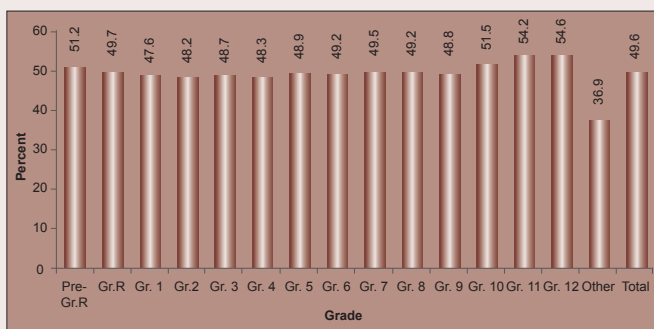


Figure 2 shows that, in the schooling system, there were more male than female (49.6%) learners. The lowest percentage of female learners in ordinary schools nationally was in Grade 1 (47.6%) and the highest percentage was in Grades 11 and 12 (54.2 and 54.6% respectively).

**Figure 3: Percentage distribution of learners in ordinary schools, by grade, in 2014**

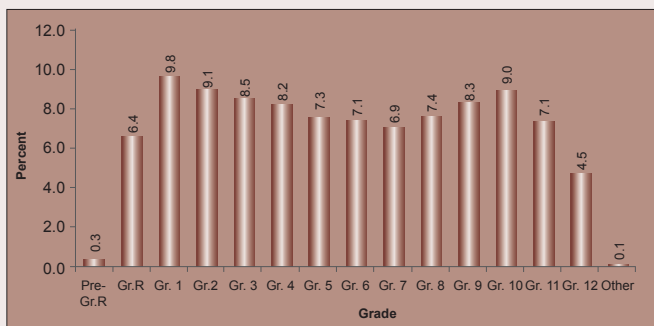


Figure 3 indicates that enrolment is generally very high in Grade 1 (9.8%) and declines as learners move to higher grades within the schooling system with 4.5% in Grade 12.

Table 5 reflects the following indicators:

- (a) When counting all educators, the LER for ordinary public schools nationally was 31.0, while, when counting only state-paid educators in these schools, the LER increased to 33.2.
- (b) The LSR for ordinary public schools nationally was 504, with five provinces (Gauteng, Mpumalanga, the Northern Cape, North West and the Western Cape) higher than the national average.

**Table 5: Indicators for ordinary PUBLIC schools, by province, in 2014**

Province	LER		LSR	ESR
	State-paid and SGB-paid Educators	State-Paid Educators 1)		
Eastern Cape	30.8	32.9	340	11.0
Free State	27.8	29.6	503	18.1
Gauteng	32.0	35.5	939	29.4
KwaZulu-Natal	31.3	32.9	479	15.3
Limpopo	30.4	31.1	425	14.0
Mpumalanga	30.8	32.1	587	19.1
Northern Cape	32.1	34.4	517	16.1
North West	31.4	33.4	518	16.5
Western Cape	31.8	37.7	704	22.1
<b>South Africa</b>	<b>31.0</b>	<b>33.2</b>	<b>504</b>	<b>16.2</b>

1) Underlying data not shown in the publication.

- (c) The ESR for ordinary public schools nationally was 16.2, with five provinces (the Free State, Gauteng, Mpumalanga, North West and the Western Cape) higher than the national average.

**Figure 4: Frequency distribution of learners in ordinary PUBLIC schools in 2014**

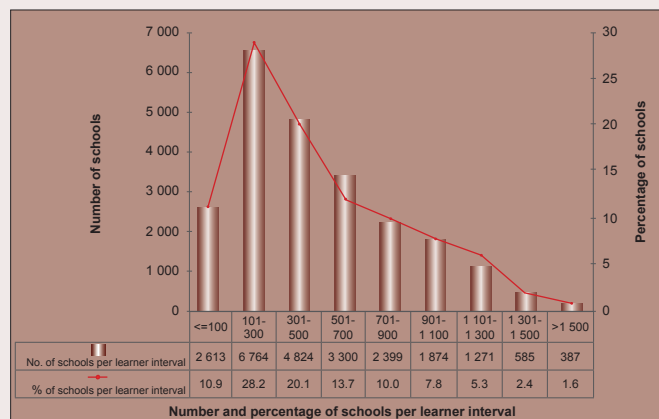


Figure 4, a histogram, shows that the highest number of ordinary public schools nationally (6 764, or 28.2%) was in the 101 to 300 learner interval. Furthermore, there were 2 613 schools (10.9%) and 387 schools (1.6%) in, respectively, the 100 and below learner interval and the above 1 500 learner interval.

**Figure 5: Frequency distribution of LER in ordinary PUBLIC schools in 2014**

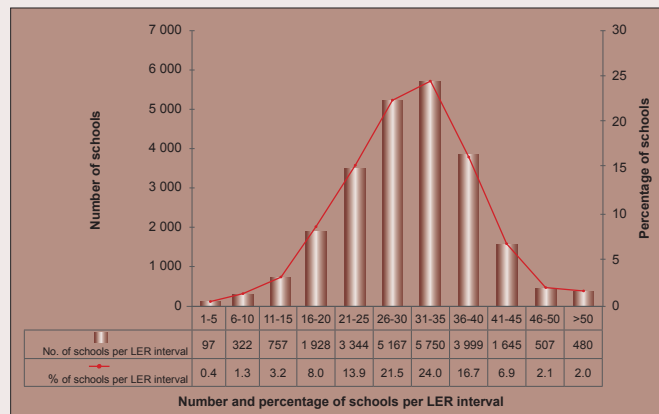


Figure 5, a histogram, reflects that the highest number of ordinary public schools nationally (5 750, or 24.0%) was in the 31 to 35 LER interval. Furthermore, there were 97 schools (0.4%) and 480 schools (2.0%) in, respectively, the one to five LER interval and the above 50 LER interval.