

# School Realities

Published December 2022

Enquiries: 012 357 3676

In 2022, there were 13 419 971 learners in ordinary public and independent schools (hereinafter collectively referred to as ordinary schools) in South Africa, who attended 24 871 schools and were served by 450 993 educators (see Tables 2 and 3). These data are from databases uploaded on Learner Unit

Record Information and Tracking System (LURITS) and Provincial Data Warehouses as at July 2022. Approximately 99.9% of functional ordinary schools were uploaded. No imputation was done on the data. The figures in this publication are preliminary, and the final figures will be published in the more comprehensive *Education Statistics in South Africa 2022*.

**Table 1: List of abbreviations**

<b>ECD</b>	Early Childhood Development	<b>LER</b>	Learner-Educator Ratio
<b>ESR</b>	Educator-School Ratio	<b>LSR</b>	Learner-School Ratio
<b>FET</b>	Further Education and Training	<b>SGB</b>	School Governing Body
<b>GET</b>	General Education and Training	<b>SNE</b>	Special Need Education

**Table 2: Number of learners,educators and schools in ordinary school sector,by province, in 2022**

Province	Public			Independent			Public and Independent					
	Learners	Educators	Schools	Learners	Educators	Schools	Learners	As % of National Total	Educators	As % of National Total	Schools	As % of National Total
Eastern Cape	1 751 496	57 509	5 046	74 654	3 895	265	1 826 150	13.6	61 404	13.6	5 311	21.4
Free State	707 664	23 114	946	21 180	1 229	83	728 844	5.4	24 343	5.4	1 029	4.1
Gauteng	2 254 391	71 966	2 056	357 250	21 487	935	2 611 641	19.5	93 453	20.7	2 991	12.0
KwaZulu-Natal	2 822 526	91 298	5 801	60 828	4 352	220	2 883 354	21.5	95 650	21.2	6 021	24.2
Limpopo	1 715 130	50 599	3 646	83 516	3 993	201	1 798 646	13.4	54 592	12.1	3 847	15.5
Mpumalanga	1 109 466	35 119	1 649	35 821	2 460	135	1 145 287	8.5	37 579	8.3	1 784	7.2
Northern Cape	299 014	10 127	545	7 042	540	41	306 056	2.3	10 667	2.4	586	2.4
North West	847 044	27 232	1 448	28 051	1 691	100	875 095	6.5	28 923	6.4	1 548	6.2
Western Cape	1 178 155	38 662	1 452	66 743	5 720	302	1 244 898	9.3	44 382	9.8	1 754	7.1
<b>South Africa</b>	<b>12 684 886</b>	<b>405 626</b>	<b>22 589</b>	<b>735 085</b>	<b>45 367</b>	<b>2 282</b>	<b>13 419 971</b>	<b>100.0</b>	<b>450 993</b>	<b>100.0</b>	<b>24 871</b>	<b>100.0</b>

Table 2 shows the number of ordinary public and independent schools, learners and educators there were in 2022. It further shows that the highest and lowest percentages of learners, educators and schools in the ordinary school sector occurred in KwaZulu-Natal and the Northern Cape, respectively. Majority of independent schools were situated in Gauteng (935) followed by the Western Cape with 302 schools.

**Table 3: Number of learners in ordinary public and independent schools by sector and province, from 2020 to 2022**

Province	LEARNERS			EDUCATORS			SCHOOLS		
	2020	2021	2022	2020	2021	2022	2020	2021	2022
Eastern Cape	1 843 297	1 848 053	1 826 150	62 647	62 698	61 404	5 452	5 341	5 311
Free State	719 847	726 713	728 844	23 702	23 867	24 343	1 122	1 071	1 029
Gauteng	2 508 387	2 564 812	2 611 641	89 397	91 958	93 453	2 905	2 941	2 991
KwaZulu-Natal	2 867 271	2 893 958	2 883 354	96 698	96 659	95 650	6 191	6 022	6 021
Limpopo	1 759 322	1 799 130	1 798 646	53 598	53 582	54 592	3 886	3 855	3 847
Mpumalanga	1 107 890	1 134 889	1 145 287	36 818	36 963	37 579	1 782	1 785	1 784
Northern Cape	304 237	304 566	306 056	10 527	10 486	10 667	585	585	586
North West	863 071	872 601	875 095	27 661	28 248	28 923	1 532	1 539	1 548
Western Cape	1 243 150	1 264 527	1 244 898	41 892	42 662	44 382	1 744	1 755	1 754
<b>South Africa</b>	<b>13 216 472</b>	<b>13 409 249</b>	<b>13 419 971</b>	<b>442 940</b>	<b>447 123</b>	<b>450 993</b>	<b>25 199</b>	<b>24 894</b>	<b>24 871</b>

Sources:

2020/21: As published in *School Realities 2020 and 2021*

From the figures reflected in Table 3 it can be deduced that, from 2020 to 2022, the number of learners increased by 1.5% nationally, and the number of educators increased by 1.8%, while the number of schools decreased by 1.3%.

# E M I S

**Table 4: Number of learners in ordinary schools, by province, sector, gender and grade, in 2022**

Province	Sector	Gender	Pre-Grade R Phase	GET Band												Total (GET Band)	
				Foundation Phase					Intermediate Phase				Senior Phase				
				Gr. R	Gr. 1	Gr. 2	Gr. 3	Total	Gr. 4	Gr. 5	Gr. 6	Total	Gr. 7	Gr. 8	Gr. 9		Total
Eastern Cape	Independent	Female	251	2 808	3 952	3 813	3 654	14 227	3 495	3 400	3 205	10 100	3 032	2 618	2 208	7 858	32 185
		Total	491	5 455	7 913	7 592	7 307	28 267	7 160	6 740	6 300	20 200	5 972	5 031	4 243	15 246	63 713
	Public	Female	841	51 682	66 074	67 573	66 745	252 074	67 293	69 064	68 174	204 531	68 481	70 145	67 734	206 360	662 965
		Total	1 710	105 264	139 162	141 206	140 082	525 714	145 470	143 908	143 742	433 120	143 880	148 869	137 052	429 801	1 388 635
	Both	Female	1 092	54 490	70 026	71 386	70 399	266 301	70 788	72 464	71 379	214 631	71 513	72 763	69 942	214 218	695 150
		Total	2 201	110 719	147 075	148 798	147 389	553 981	152 630	150 648	150 042	453 320	149 852	153 900	141 295	445 047	1 452 348
Free State	Independent	Female	422	538	936	935	883	3 292	875	832	758	2 465	740	905	850	2 495	8 252
		Total	881	1 098	1 963	1 891	1 826	6 778	1 739	1 628	1 549	4 916	1 499	1 790	1 629	4 918	16 612
	Public	Female	650	18 161	26 316	27 250	27 466	99 193	28 076	27 321	27 550	82 947	28 231	31 616	27 271	87 118	269 258
		Total	1 321	36 408	54 935	55 801	56 905	204 409	58 846	55 911	55 584	170 341	58 929	66 965	53 837	179 731	554 121
	Both	Female	1 072	18 699	27 252	28 185	28 349	102 485	28 951	28 153	28 308	85 412	28 971	32 521	28 121	89 613	277 510
		Total	2 202	37 506	56 898	57 692	58 731	210 827	60 585	57 539	57 133	175 257	60 428	68 755	55 466	184 649	570 733
Gauteng	Independent	Female	3 465	8 744	16 486	16 460	15 522	57 212	15 257	14 328	13 697	43 282	13 578	14 888	13 536	42 002	142 496
		Total	6 779	17 584	33 194	33 097	31 030	114 905	30 747	28 817	27 288	86 852	26 853	29 162	26 179	82 194	283 951
	Public	Female	1 372	55 254	93 227	93 994	94 312	336 787	93 019	92 589	91 671	277 279	91 906	90 878	84 654	267 438	881 504
		Total	2 775	110 151	193 144	191 354	192 572	687 221	190 299	188 096	185 315	563 710	184 635	188 283	167 724	540 642	1 791 573
	Both	Female	4 837	63 998	109 713	110 454	109 834	393 999	108 276	106 917	105 368	320 561	105 484	105 766	98 190	309 440	1 024 000
		Total	9 554	127 735	226 338	224 451	223 602	802 126	221 046	216 913	212 603	650 562	211 488	217 445	193 903	622 836	2 075 524
KwaZulu-Natal	Independent	Female	803	1 857	2 872	2 853	2 648	10 230	2 490	2 359	2 197	7 046	2 203	2 456	2 292	6 951	24 227
		Total	1 574	3 763	5 584	5 552	5 215	20 114	4 928	4 673	4 415	14 016	4 300	4 729	4 389	13 418	47 548
	Public	Female	767	79 121	101 202	107 023	105 920	393 266	105 306	106 441	106 101	317 848	106 012	110 058	109 429	325 499	1 036 613
		Total	1 547	159 774	211 436	219 931	218 694	809 835	220 208	218 771	219 934	658 913	219 248	234 887	224 313	678 448	2 147 196
	Both	Female	1 570	80 978	104 074	109 876	108 568	403 496	107 796	108 800	108 298	324 894	108 215	112 514	111 721	332 450	1 060 840
		Total	3 121	163 537	217 020	225 483	223 909	829 949	225 136	223 444	224 349	672 929	223 548	239 616	228 702	691 866	2 194 744
Limpopo	Independent	Female	512	3 615	4 189	3 968	3 984	15 756	3 933	3 591	3 343	10 867	3 070	2 946	2 780	8 796	35 419
		Total	1 005	7 174	8 310	8 119	8 048	31 651	7 778	7 094	6 542	21 414	6 097	5 671	5 152	16 920	69 985
	Public	Female	458	57 035	61 401	65 398	66 011	249 845	66 424	65 737	63 995	196 156	62 659	66 129	63 028	191 816	637 817
		Total	912	114 736	126 691	133 572	136 447	511 446	141 044	137 570	134 209	412 823	131 430	143 320	130 020	404 770	1 329 039
	Both	Female	970	60 650	65 590	69 366	69 995	265 601	70 357	69 328	67 338	207 023	65 729	69 075	65 808	200 612	673 236
		Total	1 917	121 910	135 001	141 691	144 495	543 097	148 822	144 664	140 751	434 237	137 527	148 991	135 172	421 690	1 399 024
Mpumalanga	Independent	Female	257	1 116	1 905	1 831	1 653	6 505	1 644	1 507	1 300	4 451	1 296	1 007	912	3 215	14 171
		Total	527	2 222	3 740	3 716	3 339	13 017	3 348	3 025	2 696	9 069	2 663	2 093	1 859	6 615	28 701
	Public	Female	177	31 828	42 177	42 842	43 027	159 874	42 925	43 296	41 379	127 600	41 958	44 323	42 429	128 710	416 184
		Total	315	64 409	86 785	88 074	88 795	328 063	89 043	88 131	85 672	262 846	86 481	93 904	86 758	267 143	858 052
	Both	Female	434	32 944	44 082	44 673	44 680	166 379	44 569	44 803	42 679	132 051	43 254	45 330	43 341	131 925	430 355
		Total	842	66 631	90 525	91 790	92 134	341 080	92 391	91 156	88 368	271 915	89 144	95 997	88 617	273 758	886 753
Northern Cape	Independent	Female	188	321	367	344	302	1 334	264	246	248	758	163	246	248	657	2 749
		Total	391	625	729	674	603	2 631	581	520	461	1 562	354	452	444	1 250	5 443
	Public	Female	163	9 228	13 485	13 272	12 214	48 199	12 616	12 059	11 717	36 392	12 098	12 150	10 793	35 041	119 632
		Total	329	18 664	28 256	27 189	25 046	99 155	26 824	24 890	23 924	75 638	24 612	24 695	20 975	70 282	245 075
	Both	Female	351	9 549	13 852	13 616	12 516	49 533	12 880	12 305	11 965	37 150	12 261	12 396	11 041	35 698	122 381
		Total	720	19 289	28 985	27 863	25 649	101 786	27 405	25 410	24 385	77 200	24 966	25 147	21 419	71 532	250 518
North West	Independent	Female	114	998	1 865	1 334	1 329	5 526	1 285	1 203	1 130	3 618	1 074	916	811	2 801	11 945
		Total	246	2 017	3 685	2 776	2 673	11 151	2 572	2 444	2 257	7 273	2 146	1 819	1 616	5 581	24 005
	Public	Female	181	25 077	32 635	33 775	33 555	125 042	34 446	33 998	33 517	101 961	33 657	36 861	32 866	103 204	330 207
		Total	333	50 141	67 532	69 585	68 632	255 890	72 822	69 969	69 053	211 844	69 702	77 156	64 779	211 637	679 371
	Both	Female	295	26 075	34 500	35 109	34 884	130 568	35 731	35 201	34 647	105 579	34 731	37 777	33 497	106 005	342 152
		Total	579	52 158	71 217	72 361	71 305	267 041	75 394	72 413	71 310	219 117	71 848	78 975	66 395	217 218	703 376
Western Cape	Independent	Female	806	1 801	2 880	2 970	2 871	10 522	2 754	2 612	2 439	7 805	2 386	2 807	2 679	7 872	26 199
		Total	1 428	3 526	5 896	6 019	5 752	21 193	5 388	5 201	4 823	15 412	4 799	5 478	5 283	15 560	52 165
	Public	Female	675	32 839	50 879	51 206	49 231	184 155	50 508	49 305	49 480	149 293	49 939	48 597	45 795	144 331	477 779
		Total	1 327	65 481	104 235	104 476	100 560	374 752	103 846	99 923	99 760	303 529	99 112	93 642	86 570	279 324	957 605
	Both	Female	1 481	34 640	53 759	54 176	52 102	194 677	53 262	51 917	51 919	157 098	52 325	51 404	48 474	152 203	503 978
		Total	2 755	69 007	110 131	110 495	106 312	395 945	109 234	105 124	104 583	318 941	103 911	99 120	91 853	294 884	1 009 770
South Africa	Independent	Female	6 818	21 798	35 452	34 508	32 846	124 604	31 997	30 078	28 317	90 392	27 542	28 789	26 316	82 647	297 643
		Male	6 504	21 666	35 562	34 928	32 947	125 103	32 244	30 064	28 014	90 322	27 141	27 436	24 478	79 055	294 480
		Total	13 322	43 464	71 014	69 436	65 793	249 707	64 241	60 142	56 331	180 714	54 683	56 225	50 794	161 702	592 123
	Public	Female	5 284	360 225	487 396	502 333	498 481	1 848 435	500 613	499 810	493 584	1 494 007	494 941	510 757	483 819	1 489 517	4 831 959
		Male	5 285	364 803	524 780	528 855	529 252	1 947 690	547 789	527 359	523 609	1 598 757	523 088	560 964	488 209	1 572 261	5 118 708
		Total	10 569	725 028	1 012 176	1 031 188	1 027 733	3 796 125	1 048 402	1 027 169	1 017 193	3 092 764	1 018 029	1 071 721	972 028	3 061 778	9 950 667</

# E M I S

**Table 4: Number of learners in ordinary schools, by province, sector, gender and grade, in 2022 (concluded)**

Province	Sector	Gender	FET Band				Other 1)	Total Primary (Gr. 1-7)	Total Secondary (Gr. 8-12)	Total (Gr. 1-12)	Total
			Gr. 10	Gr. 11	Gr. 12	Total					
Eastern Cape	Independent	Female	1 927	1 763	2 069	5 759	0	24 551	10 585	35 136	38 195
		Total	3 692	3 194	3 564	10 450	0	48 984	19 724	68 708	74 654
	Public	Female	72 756	64 235	55 408	192 399	0	473 404	330 278	803 682	856 205
		Total	146 692	117 799	96 660	361 151	0	997 450	647 072	1 644 522	1 751 496
	Both	Female	74 683	65 998	57 477	198 158	0	497 955	340 863	838 818	894 400
		Male	75 701	54 995	42 747	173 443	0	548 479	325 933	874 412	931 750
<b>Total</b>			<b>150 384</b>	<b>120 993</b>	<b>100 224</b>	<b>371 601</b>	<b>0</b>	<b>1 046 434</b>	<b>666 796</b>	<b>1 713 230</b>	<b>1 826 150</b>
Free State	Independent	Female	774	648	539	1 961	0	5 959	3 716	9 675	10 635
		Total	1 524	1 234	929	3 687	0	12 095	7 106	19 201	21 180
	Public	Female	32 362	24 043	25 116	81 521	0	192 210	140 408	332 618	351 429
		Total	64 446	43 922	43 854	152 222	0	396 911	273 024	669 935	707 664
	Both	Female	33 136	24 691	25 655	83 482	0	198 169	144 124	342 293	362 064
		Male	32 834	20 465	19 128	72 427	0	210 837	136 006	346 843	366 780
<b>Total</b>			<b>65 970</b>	<b>45 156</b>	<b>44 783</b>	<b>155 909</b>	<b>0</b>	<b>409 006</b>	<b>280 130</b>	<b>689 136</b>	<b>728 844</b>
Gauteng	Independent	Female	12 536	11 652	10 399	34 587	5	105 328	63 011	168 339	180 553
		Total	24 792	22 385	19 328	66 505	15	211 026	121 846	332 872	357 250
	Public	Female	95 463	77 472	68 613	241 548	51	650 718	417 080	1 067 798	1 124 475
		Total	193 134	143 684	123 052	459 870	173	1 325 415	815 877	2 141 292	2 254 391
	Both	Female	107 999	89 124	79 012	276 135	56	756 046	480 091	1 236 137	1 305 028
		Male	109 927	76 945	63 368	250 240	132	780 395	457 632	1 238 027	1 306 613
<b>Total</b>			<b>217 926</b>	<b>166 069</b>	<b>142 380</b>	<b>526 375</b>	<b>188</b>	<b>1 536 441</b>	<b>937 723</b>	<b>2 474 164</b>	<b>2 611 641</b>
KwaZulu-Natal	Independent	Female	2 115	2 037	2 052	6 204	7	17 622	10 952	28 574	31 241
		Total	4 059	3 804	3 830	11 693	13	34 667	20 811	55 478	60 828
	Public	Female	123 869	124 647	100 318	348 834	0	738 005	568 321	1 306 326	1 386 214
		Total	261 285	236 360	176 138	673 783	0	1 528 222	1 132 983	2 661 205	2 822 526
	Both	Female	125 984	126 684	102 370	355 038	7	755 627	579 273	1 334 900	1 417 455
		Male	139 360	113 480	77 598	330 438	6	807 262	574 521	1 381 783	1 465 899
<b>Total</b>			<b>265 344</b>	<b>240 164</b>	<b>179 968</b>	<b>685 476</b>	<b>13</b>	<b>1 562 889</b>	<b>1 153 794</b>	<b>2 716 683</b>	<b>2 883 354</b>
Limpopo	Independent	Female	2 417	2 131	2 309	6 857	0	26 078	12 583	38 661	42 788
		Total	4 581	3 849	4 096	12 526	0	51 988	23 349	75 337	83 516
	Public	Female	73 392	63 622	60 247	197 261	0	451 625	326 418	778 043	835 536
		Total	154 976	121 526	108 677	385 179	0	940 963	658 519	1 599 482	1 715 130
	Both	Female	75 809	65 753	62 556	204 118	0	477 703	339 001	816 704	878 324
		Male	83 748	59 622	50 217	193 587	0	515 248	342 867	858 115	920 322
<b>Total</b>			<b>159 557</b>	<b>125 375</b>	<b>112 773</b>	<b>397 705</b>	<b>0</b>	<b>992 951</b>	<b>681 868</b>	<b>1 674 819</b>	<b>1 798 646</b>
Mpumalanga	Independent	Female	899	955	1 451	3 305	0	11 136	5 224	16 360	17 733
		Total	1 888	1 954	2 751	6 593	0	22 527	10 545	33 072	35 821
	Public	Female	46 982	43 429	38 748	129 159	11	297 604	215 911	513 515	545 531
		Total	98 641	82 948	69 475	251 064	35	612 981	431 726	1 044 707	1 109 466
	Both	Female	47 881	44 384	40 199	132 464	11	308 740	221 135	529 875	563 264
		Male	52 648	40 518	32 027	125 193	24	326 768	221 136	547 904	582 023
<b>Total</b>			<b>100 529</b>	<b>84 902</b>	<b>72 226</b>	<b>257 657</b>	<b>35</b>	<b>635 508</b>	<b>442 271</b>	<b>1 077 779</b>	<b>1 145 287</b>
Northern Cape	Independent	Female	247	245	177	669	0	1 934	1 163	3 097	3 606
		Total	468	420	320	1 208	0	3 922	2 104	6 026	7 042
	Public	Female	11 877	8 696	7 846	28 419	0	87 461	51 362	138 823	148 214
		Total	24 009	15 769	13 832	53 610	0	180 741	99 280	280 021	299 014
	Both	Female	12 124	8 941	8 023	29 088	0	89 395	52 525	141 920	151 820
		Male	12 353	7 248	6 129	25 730	0	95 268	48 859	144 127	154 236
<b>Total</b>			<b>24 477</b>	<b>16 189</b>	<b>14 152</b>	<b>54 818</b>	<b>0</b>	<b>184 663</b>	<b>101 384</b>	<b>286 047</b>	<b>306 056</b>
North West	Independent	Female	785	674	547	2 006	16	9 220	3 733	12 953	14 081
		Total	1 473	1 313	982	3 768	32	18 553	7 203	25 756	28 051
	Public	Female	35 167	28 183	24 709	88 059	0	235 583	157 606	393 189	418 447
		Total	70 707	52 395	44 238	167 340	0	487 295	309 275	796 570	847 044
	Both	Female	35 952	28 857	25 256	90 065	16	244 803	161 339	406 142	432 528
		Male	36 228	24 851	19 964	81 043	16	261 045	155 139	416 184	442 567
<b>Total</b>			<b>72 180</b>	<b>53 708</b>	<b>45 220</b>	<b>171 108</b>	<b>32</b>	<b>505 848</b>	<b>316 478</b>	<b>822 326</b>	<b>875 095</b>
Western Cape	Independent	Female	2 325	2 309	2 057	6 691	11	18 912	12 177	31 089	33 707
		Total	4 640	4 531	3 953	13 124	26	37 878	23 885	61 763	66 743
	Public	Female	46 370	39 070	34 209	119 649	343	350 548	214 041	564 589	598 446
		Total	87 430	70 963	59 951	218 344	879	711 912	398 556	1 110 468	1 178 155
	Both	Female	48 695	41 379	36 266	126 340	354	369 460	226 218	595 678	632 153
		Male	43 375	34 115	27 638	105 128	551	380 330	196 223	576 553	612 745
<b>Total</b>			<b>92 070</b>	<b>75 494</b>	<b>63 904</b>	<b>231 468</b>	<b>905</b>	<b>749 790</b>	<b>422 441</b>	<b>1 172 231</b>	<b>1 244 898</b>
South Africa	Independent	Female	24 025	22 414	21 600	68 039	39	220 740	123 144	343 884	372 539
		Male	23 092	20 270	18 153	61 515	47	220 900	113 429	334 329	362 546
	Public	Female	47 117	42 684	39 753	129 554	86	441 640	236 573	678 213	735 085
		Male	538 238	473 397	415 214	1 426 849	405	3 477 158	2 421 425	5 898 583	6 264 497
	Both	Female	563 082	411 969	320 663	1 295 714	682	3 704 732	2 344 887	6 049 619	6 420 389
		Male	1 101 320	885 366	735 877	2 722 563	1 087	7 181 890	4 766 312	11 948 202	12 684 886
<b>Total</b>			<b>562 263</b>	<b>495 811</b>	<b>436 814</b>	<b>1 494 888</b>	<b>444</b>	<b>3 697 898</b>	<b>2 544 569</b>	<b>6 242 467</b>	<b>6 637 036</b>
			<b>586 174</b>	<b>432 239</b>	<b>338 816</b>	<b>1 357 229</b>	<b>729</b>	<b>3 925 632</b>	<b>2 458 316</b>	<b>6 383 948</b>	<b>6 782 935</b>
<b>Total</b>			<b>1 148 437</b>	<b>928 050</b>	<b>775 630</b>	<b>2 852 117</b>	<b>1 173</b>	<b>7 623 530</b>	<b>5 002 885</b>	<b>12 626 415</b>	<b>13 419 971</b>

Note 1: Data exclude learners at stand-alone ECD sites and special schools.

Note 2: Owing to a shortage of space in the table, the male enrolment figures for ordinary public and independent schools are intentionally omitted in the provincial data, but are included in the national data.

1) Learners not grouped in any of the grades provided

**Figure 1: Percentage distribution of learners in ordinary schools, by phase, in 2022**

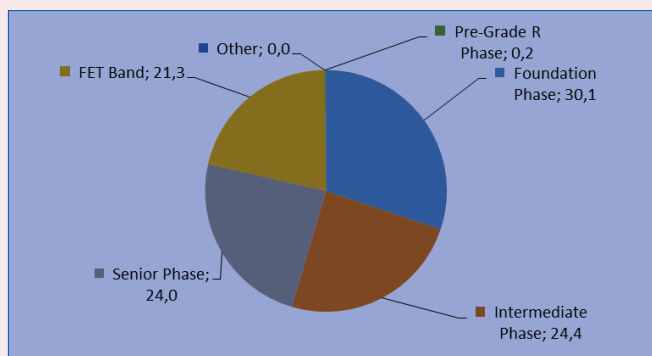


Figure 1 reveals that the highest proportion of learners in ordinary schools nationally was located in the foundation phase (30.1%) followed by the intermediate phase and the senior phase with 24.4% and 24.0%.

**Figure 2: Percentage distribution of female learners in ordinary schools, by grade, in 2022**

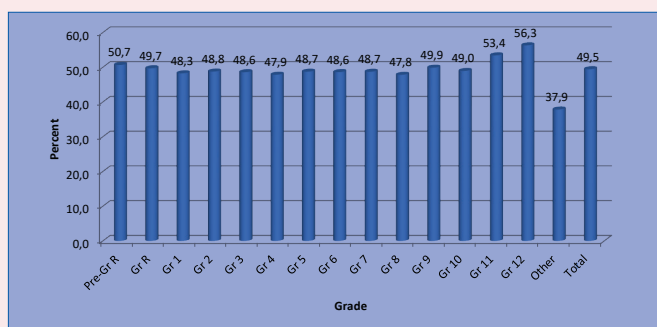


Figure 2 shows that, in the schooling system, there were more male than female (49.5%) learners. The lowest percentage of female learners in ordinary schools nationally was in Grades 4 (47.9%) and the highest percentage was in Grades 11 and 12 (53.4 and 56.3% respectively).

**Figure 3: Percentage distribution of learners in ordinary schools, by grade, in 2022**

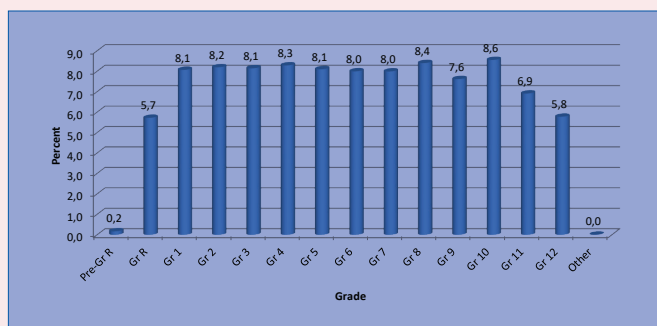


Figure 3 indicates that enrolment is generally very high in Grades 10 (8.6%) and declines as learners move to higher grades within the schooling system with 5.8% in Grade 12.

Table 5 reflects the following indicators:

(a) When counting all educators, the LER for ordinary public schools nationally was 31.7, while, when counting only state-paid educators in these schools, the LER increased to 35.1.

**Table 5: Indicators for ordinary PUBLIC schools, by province, in 2020**

Province	LER		LSR	ESR
	State-paid and SGB-paid Educators	State-Paid Educators <sup>1)</sup>		
Eastern Cape	30,9	34,9	347	11,2
Free State	31,1	34,7	748	24,1
Gauteng	31,5	36,7	1 096	34,8
KwaZulu-Natal	31,3	33,7	487	15,5
Limpopo	34,1	35,4	470	13,8
Mpumalanga	31,9	34,8	673	21,1
Northern Cape	29,8	32,5	549	18,4
North West	31,3	33,9	585	18,7
Western Cape	31,4	38,4	811	25,8
<b>South Africa</b>	<b>31,7</b>	<b>35,1</b>	<b>562</b>	<b>17,7</b>

1) Underlying data not shown in the publication.

(b) The LSR for ordinary public schools nationally was 562, with five provinces (Free State, Gauteng, Mpumalanga, North West, and the Western Cape) higher than the national average.

(c) The ESR for ordinary public schools nationally was 17.7, with six provinces (the Free State, Gauteng, Mpumalanga, the Northern Cape, North West, and the Western Cape) higher than the national average.

**Figure 4: Frequency distribution of learners in ordinary PUBLIC schools in 2022**

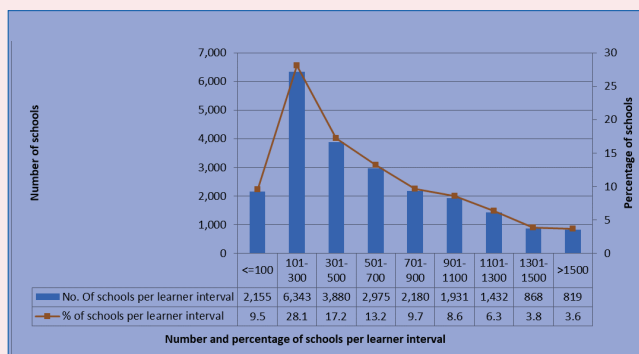


Figure 4, a histogram, shows that the highest number of ordinary public schools nationally (6 343, or 28.1%) was in the 101 to 300 learner interval. Furthermore, there were 2 155 schools (9.5%) and 819 schools (3.6%) in, respectively, the 100 and below learner interval and the above 1 500 learner interval.

**Figure 5: Frequency distribution of LER in ordinary PUBLIC schools in 2022**

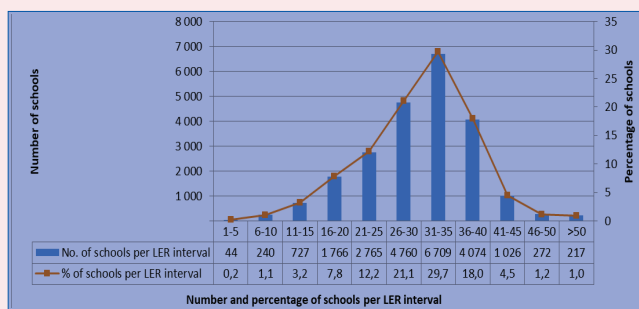


Figure 5, a histogram, reflects that the highest number of ordinary public schools nationally (6 709, or 29.7%) was in the 31 to 35 LER interval. Furthermore, there were 44 schools (0.2%) and 217 schools (1.0%) in, respectively, the one to five LER interval and the above 50 LER interval.