

2005 School Realities

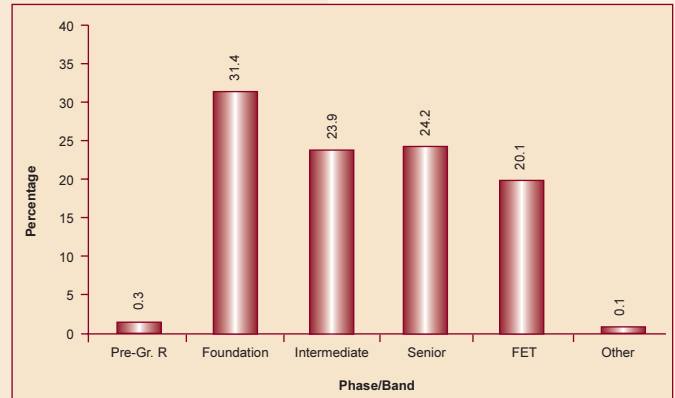
Published February 2006
Enq: (012) 312-5911

In 2005, there were 12 197 726 learners in ordinary public and independent schools in South Africa, who attended 26 599 schools and were served by 381 896 educators (see Tables 1 and 2). These data are from the survey conducted on the 10th school day. Approximately 96% of schools submitted the survey forms.

Table 1 shows a national average learner-to-educator ratio (LER) of 31.9 (in four provinces the ratio was higher than the national average), and an LER for independent schools (16.2) that was approximately half the LER for public schools (32.8). The national average learner-to-school ratio (LSR) was 459, with five provinces higher than the national average.

Table 1 further indicates that the percentage of educators at independent schools (5.1%) was much higher than the percentage of learners (2.6%) and the percentage of schools (3.8%) in the same category. For a number of provinces these percentages were almost the same.

Figure 1: Percentage distribution of learners in ordinary public and independent schools, by school phase/band, in 2005



As Figure 1 shows (also see Table 2), 31.4% of the learners were in the Foundation Phase (Grades R to 3) and 20.1% were in the Further Education and Training (FET) Band (Grades 10 to 12).

Table 1: Number of learners, educators and schools, and learner-to-educator (LER) and learner-to-school (LSR) ratios in ordinary public and independent schools, by province and type of school, in 2005

Province	Type of School	Learners			Educators			Schools			LER	LSR
		Number	As % of Provincial Total	As % of National Total	Number	As % of Provincial Total	As % of National Total	Number	As % of Provincial Total	As % of National Total		
Eastern Cape	Public	2 179 138	98.8	18.3	66 083	98.3	18.2	6 239	98.5	24.4	33.0	349
	Independent	27 437	1.2	8.7	1 147	1.7	5.9	94	1.5	9.2	23.9	292
	Total	2 206 575		18.1	67 230		17.6	6 333		23.8	32.8	348
Free State	Public	655 233	98.0	5.5	22 324	97.1	6.2	1 842	96.6	7.2	29.4	356
	Independent	13 691	2.0	4.3	655	2.9	3.4	64	3.4	6.3	20.9	214
	Total	668 924		5.5	22 979		6.0	1 906		7.2	29.1	351
Gauteng	Public	1 599 685	91.7	13.5	50 600	84.2	14.0	1 897	84.0	7.4	31.6	843
	Independent	145 693	8.3	46.2	9 529	15.8	49.1	360	16.0	35.4	15.3	405
	Total	1 745 378		14.3	60 129		15.7	2 257		8.5	29.0	773
KwaZulu-Natal	Public	2 675 993	98.4	22.5	77 906	96.2	21.5	5 653	97.5	22.1	34.3	473
	Independent	44 003	1.6	14.0	3 090	3.8	15.9	146	2.5	14.4	14.2	301
	Total	2 719 996		22.3	80 996		21.2	5 799		21.8	33.6	469
Limpopo	Public	1 885 508	98.9	15.9	55 361	98.3	15.3	4 187	98.4	16.4	34.1	450
	Independent	20 974	1.1	6.7	949	1.7	4.9	68	1.6	6.7	22.1	308
	Total	1 906 482		15.6	56 310		14.7	4 255		16.0	33.9	448
Mpumalanga	Public	893 040	97.7	7.5	26 643	96.2	7.4	1 863	94.3	7.3	33.5	479
	Independent	21 172	2.3	6.7	1 058	3.8	5.4	112	5.7	11.0	20.0	189
	Total	914 212		7.5	27 701		7.3	1 975		7.4	33.0	463
North West	Public	836 159	98.8	7.0	26 929	98.1	7.4	2 025	98.1	7.9	31.1	413
	Independent	9 783	1.2	3.1	534	1.9	2.8	39	1.9	3.8	18.3	251
	Total	845 942		6.9	27 463		7.2	2 064		7.8	30.8	410
Northern Cape	Public	207 688	98.8	1.7	6 513	98.1	1.8	422	98.1	1.6	31.9	492
	Independent	2 464	1.2	0.8	128	1.9	0.7	8	1.9	0.8	19.3	308
	Total	210 152		1.7	6 641		1.7	430		1.6	31.6	489
Western Cape	Public	949 925	96.9	8.0	30 119	92.8	8.3	1 454	92.0	5.7	31.5	653
	Independent	30 140	3.1	9.6	2 328	7.2	12.0	126	8.0	12.4	12.9	239
	Total	980 065		8.0	32 447		8.5	1 580		5.9	30.2	620
National	Public	11 882 369	97.4		362 478	94.9		25 582	96.2		32.8	464
	Independent	315 357	2.6		19 418	5.1		1 017	3.8		16.2	310
	Total	12 197 726			381 896			26 599			31.9	459



E M I S

Province	Type of School	Gender	Further Education and Training (FET) Band				Other				Total Primary (Gr. 1-7)	Total Secondary (Gr. 8-12)	Total (Gr. 1-12)	Grand Total
			Gr. 10	Gr. 11	Gr. 12	Total	LSEN	Post-Matric	Unspecified	Total				
Eastern Cape	Public	Female	86 304	63 946	41 059	191 309	587	2	0	589	694 740	350 373	1 045 113	1 103 790
		Total	155 928	112 845	72 542	341 315	1 565	14	0	1 579	1 420 663	641 925	2 062 588	2 179 138
	Independent	Female	1 461	1 279	1 749	4 489	8	55	0	63	6 624	6 468	13 092	14 191
		Total	2 754	2 342	3 016	8 112	14	78	0	92	13 155	12 079	25 234	27 437
	Both	Female	87 765	65 225	42 808	195 798	595	57	0	652	701 364	356 841	1 058 205	1 117 981
		Total	70 917	49 962	32 750	153 629	984	35	0	1 019	732 454	297 163	1 029 617	1 088 594
			158 682	115 187	75 558	349 427	1 579	92	0	1 671	1 433 818	654 004	2 087 822	2 206 575
Free State	Public	Female	34 157	24 174	13 553	71 884	2	0	0	0	185 669	132 182	317 851	326 665
		Total	67 036	45 288	25 975	138 299	2	0	0	0	379 772	257 569	637 341	655 233
	Independent	Female	671	588	437	1 696	2	0	0	0	3 507	2 976	6 483	6 768
		Total	1 311	1 106	818	3 235	2	0	0	0	7 221	5 913	13 134	13 691
	Both	Female	34 828	24 762	13 990	73 580	2	0	0	0	189 176	135 158	324 334	333 433
		Total	33 519	21 632	12 803	67 954	2	0	0	0	197 817	128 324	326 141	335 491
			68 347	46 394	26 793	141 534	2	0	0	0	386 993	263 482	650 475	668 924
Gauteng	Public	Female	75 512	59 721	40 536	175 769	1 197	12	70	1 279	465 700	313 527	779 227	799 113
		Total	149 441	112 939	74 600	336 980	3 259	29	171	3 459	945 848	612 484	1 558 332	1 599 685
	Independent	Female	6 536	6 437	6 524	19 497	98	0	101	199	36 643	33 345	69 988	74 993
		Total	12 794	12 027	11 939	36 760	307	0	189	496	71 706	64 133	135 839	145 693
	Both	Female	82 048	66 158	47 060	195 266	1 295	12	171	1 478	502 343	346 872	849 215	874 106
		Total	80 187	58 808	39 479	178 474	2 271	17	189	2 477	515 211	329 745	844 956	871 272
			162 235	124 966	86 539	373 740	3 566	29	360	3 955	1 017 554	676 617	1 694 171	1 745 378
KwaZulu-Natal	Public	Female	113 481	104 944	65 806	284 231	1 713	119	0	1 832	780 056	497 097	1 277 153	1 319 208
		Total	223 675	201 373	123 201	548 249	4 573	202	0	4 775	1 615 640	974 831	2 590 471	2 675 993
	Independent	Female	1 984	1 920	3 133	7 037	12	20	0	32	10 433	11 008	21 441	23 333
		Total	3 619	3 495	5 417	12 531	39	51	0	90	20 331	19 953	40 284	44 003
	Both	Female	115 465	106 864	68 939	291 268	1 725	139	0	1 864	790 489	508 105	1 298 594	1 342 541
		Total	111 829	98 004	59 679	269 512	2 887	114	0	3 001	845 482	486 679	1 332 161	1 377 455
			227 294	204 868	128 618	560 780	4 612	253	0	4 865	1 635 971	994 784	2 630 755	2 719 996
Limpopo	Public	Female	95 168	83 226	50 209	228 603	266	203	0	469	500 810	385 926	886 736	936 561
		Total	183 602	153 801	92 975	430 378	617	397	0	1 014	1 041 064	744 395	1 785 459	1 885 508
	Independent	Female	726	643	728	2 097	0	0	0	0	5 973	3 713	9 686	10 663
		Total	1 350	1 234	1 327	3 911	0	0	0	0	12 080	6 895	18 975	20 974
	Both	Female	95 894	83 869	50 937	230 700	266	203	0	469	506 783	389 639	896 422	947 224
		Total	89 058	71 166	43 365	203 589	351	194	0	545	546 361	361 651	908 012	959 258
			184 952	155 035	94 302	434 289	617	397	0	1 014	1 053 144	751 290	1 804 434	1 906 482
Mpumalanga	Public	Female	44 785	32 388	21 953	99 126	147	0	0	147	263 320	172 468	435 788	443 150
		Total	87 430	60 837	40 467	188 734	546	0	0	546	544 747	333 353	878 100	893 040
	Independent	Female	859	798	824	2 481	6	0	0	6	5 312	3 920	9 232	10 216
		Total	1 642	1 458	1 475	4 575	22	0	0	22	10 812	8 472	19 284	21 172
	Both	Female	45 644	33 186	22 777	101 607	153	0	0	153	268 632	176 388	445 020	453 366
		Total	43 428	29 109	19 165	91 702	415	0	0	415	286 927	165 437	452 364	460 846
			89 072	62 295	41 942	193 309	568	0	0	568	555 559	341 825	897 384	914 212
North West	Public	Female	39 882	30 985	18 772	89 639	195	114	0	309	252 039	161 010	413 049	418 114
		Total	77 440	58 172	34 776	170 388	515	146	0	661	512 161	313 741	825 902	836 159
	Independent	Female	300	302	265	867	0	19	0	19	2 803	1 818	4 621	4 969
		Total	623	551	435	1 609	0	21	0	21	5 610	3 422	9 032	9 783
	Both	Female	40 182	31 287	19 037	90 506	195	133	0	328	254 842	162 828	417 670	423 083
		Total	37 881	27 436	16 174	81 491	320	34	0	354	262 929	154 335	417 264	422 859
			78 063	58 723	35 211	171 997	515	167	0	682	517 771	317 163	834 934	845 942
Northern Cape	Public	Female	8 816	6 570	4 146	19 532	154	0	0	154	62 300	36 930	99 230	102 995
		Total	17 488	12 790	7 921	38 199	413	0	0	413	126 641	73 359	200 000	207 688
	Independent	Female	219	163	170	552	2	0	0	2	476	881	1 357	1 433
		Total	326	252	234	812	6	0	0	6	903	1 382	2 285	2 464
	Both	Female	9 035	6 733	4 316	20 084	156	0	0	156	62 776	37 811	100 587	104 428
		Total	8 779	6 309	3 839	18 927	263	0	0	263	64 768	36 930	101 698	105 724
			17 814	13 042	8 155	39 011	419	0	0	419	127 544	74 741	202 285	210 152
Western Cape	Public	Female	43 819	31 799	22 464	98 082	153	1	0	154	280 469	184 531	465 000	481 756
		Total	81 041	56 544	39 427	177 012	403	1	0	404	569 998	346 619	916 617	949 925
	Independent	Female	1 051	1 040	1 142	3 233	10	63	0	73	8 058	5 250	13 308	15 290
		Total	1 994	1 955	2 364	6 313	29	124	0	153	16 097	10 183	26 280	30 140
	Both	Female	44 870	32 839	23 606	101 315	163	64	0	227	288 527	189 781	478 308	497 046
		Total	38 165	25 660	18 185	82 010	269	61	0	330	297 568	167 021	464 589	483 019
			83 035	58 499	41 791	183 325	432	125	0	557	586 095	356 802	942 897	980 065
National	Public	Female	541 924	437 753	278 498	1 258 175	4 412	451	70	4 933	3 485 103	2 234 044	5 719 147	5 931 352
		Total	1 043 081	814 589	511 884	2 369 554	11 891	789	171	12 851	7 156 534	4 298 276	11 454 810	11 882 369
	Independent	Female	13 807	13 170	14 972	41 949	136	157	101	394	79 829	69 379	149 208	161 856
		Total	26 413	24 420	27 025	77 858	417	274	189	880	157 915	132 432	290 347	315 357
	Both	Female	555 731	450 923	293 470	1 300 124	4 548	608	171	5 327	3 564 932	2 303 423	5 868 355	6 093 208
		Total	513 763	388 086	245 439	1 147 288	7 760	455	189	8 404	3 749 517	2 127 285	5 876 802	6 104 518
			1 069 494	839 009	538 909	2 447 412	12 308	1 063	360	13 731	7 314 449	4 430 708	11 745 157	12 197 726

Note 1: Data exclude learners at stand-alone ECD sites, ELSEN (special) schools, ABET centres and FET institutions.
Note 2: Owing to a shortage of space, the male enrolment figures for public and independent schools are intentionally omitted.

2) Free State: Learners with Special Education Needs (LSEN) not available at the time of printing.

Figure 2: Percentage distribution of female learners in ordinary public and independent schools, by grade, in 2005

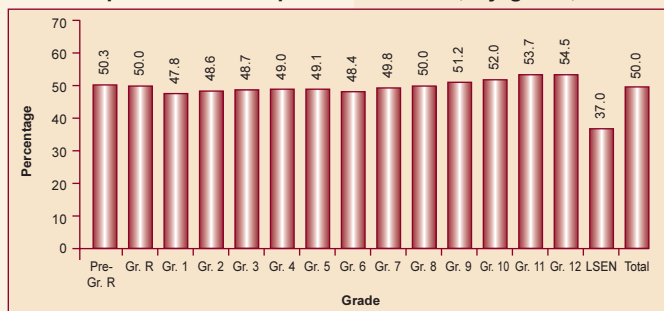


Figure 2 shows that there were fewer female than male learners in Grades 1 to 7, while the opposite was true for Grades 8 to 12 (also see Table 2).

As Figure 3 shows, 10.1% of the learners were enrolled in Grade 1 and 4.4% were enrolled in Grade 12. This means that for every Grade 12 learner there were 2.3 Grade 1 learners.

Nationally, a downward trend in learner numbers is reflected for the period 1999 to 2001, while the opposite is true for the period 2001 to 2005 (see Table 3 and Figure 4).

Table 4 reflects some indicators: (a) 2.6% of learners were in independent schools, with the highest percentage (8.3%) in Gauteng; (b) there were 6.9% SGB-paid educators in public schools (with two provinces indicating more than 13%) and 3.8% state-paid educators in independent schools (with two provinces indicating more than 20%); (c) when counting all educators, the LER for public schools was 32.8, while, when counting only state-paid educators in these schools, the LER increased by 7.3% (to 35.2); (d) the Gross Enrolment Ratio (GER) was 97%, with three provinces higher than 100%; and (e) the Gender Parity Index (GPI) was 1.00, with two provinces higher than 1.00, which indicates that, in proportion to the appropriate school-age population, there were more females than males in the school system in two provinces.

Figure 3: Percentage distribution of learners in ordinary public and independent schools, by grade, in 2005

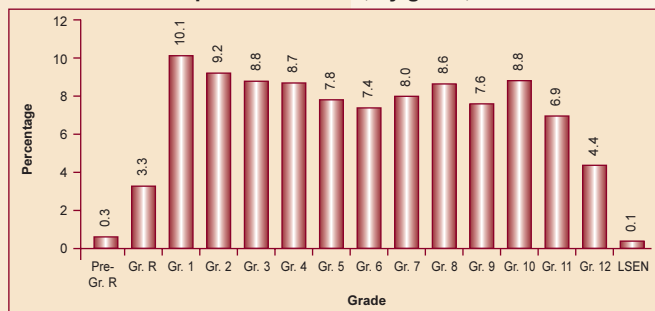


Table 3: Comparative data of learners in ordinary public and independent schools, by province, from 1999 to 2005

Province	Learners						
	1999	2000	2001	2002	2003	2004	2005
Eastern Cape	2 324 684	2 138 861	2 033 832	2 072 054	2 116 426	2 150 308	2 206 575
Free State	780 170	764 755	716 021	705 368	696 155	690 490	668 924
Gauteng	1 569 423	1 554 495	1 561 359	1 617 017	1 661 817	1 697 908	1 745 378
KwaZulu-Natal	2 772 225	2 663 360	2 698 453	2 729 834	2 783 051	2 718 176	2 719 996
Limpopo	1 823 017	1 845 265	1 816 189	1 839 079	1 816 852	1 893 626	1 906 482
Mpumalanga	930 624	911 779	903 997	914 353	914 739	934 786	914 212
North West	946 160	909 906	893 144	897 342	891 036	903 379	845 942
Northern Cape	204 238	198 650	197 101	196 731	202 010	209 000	210 152
Western Cape	963 358	916 384	918 030	945 239	956 836	978 718	980 065
National	12 313 899	11 903 455	11 738 126	11 917 017	12 038 922	12 176 391	12 197 726

Figure 4: Trend line of learners in ordinary public and independent schools from 1999 to 2005



Table 4: Indicators for ordinary public and independent schools, by province, in 2005

Province	Learners in Independent Schools (%)	Educators (%)		LER		Gr. 1 – 12	
		SGB-Paid in Public Schools	State-Paid in Independent Schools	Public Schools, including SGB-Paid Educators	Public Schools, excluding SGB-Paid Educators	GER (%)	GPI
Eastern Cape	1.2	5.3	1.0	33.0	34.8	99	1.04
Free State	2.0	4.0	16.0	29.4	30.6	88	1.00
Gauteng	8.3	13.8	0.4	31.6	36.7	101	1.00
KwaZulu-Natal	1.6	6.5	5.6	34.3	36.7	98	0.98
Limpopo	1.1	1.9	8.4	34.1	34.7	101	0.99
Mpumalanga	2.3	5.2	21.3	33.5	35.4	101	0.98
North West	1.2	4.2	9.7	31.1	32.4	88	1.00
Northern Cape	1.2	6.9	20.3	31.9	34.2	93	0.99
Western Cape	3.1	15.3	1.1	31.5	37.2	93	1.03
National	2.6	6.9	3.8	32.8	35.2	97	1.00

Note: School Governing Body (SGB).